

PROPOSED HIGHWAY PLANS

FAS ROUTE 1317 (IL 113)

SECTION (109,110) I

PROJECT : ACHSIP-1317(001)

SHOULDER WIDENING & RUMBLE STRIPS
KANKAKEE COUNTY

C-93-027-16

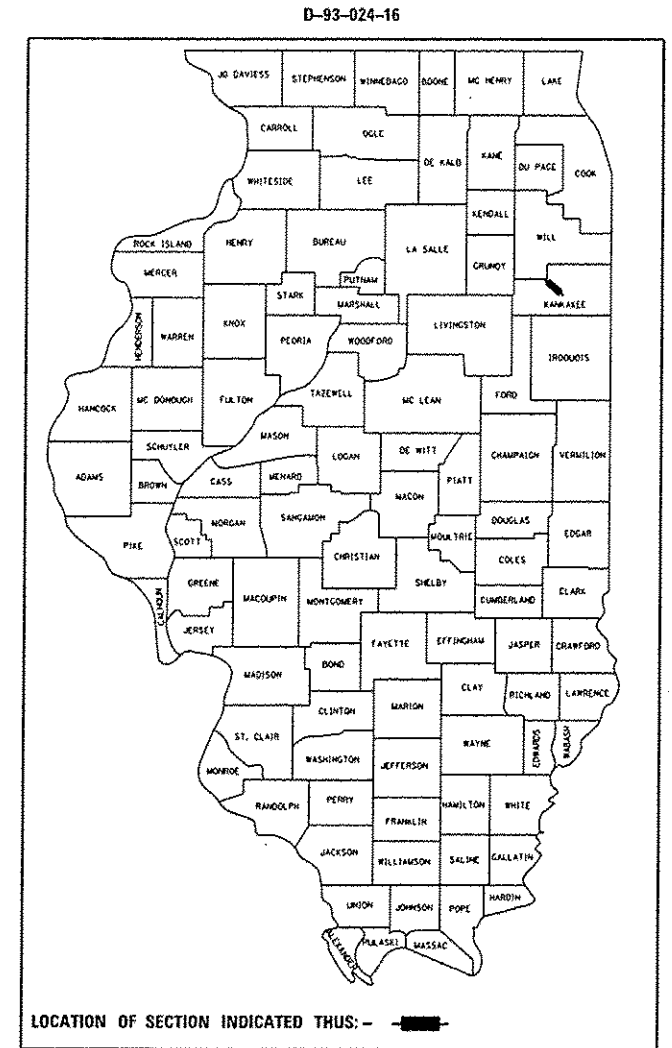
F.A.S. RTE.	SECTION	COUNTY	TOTAL SHEETS	SHEET NO.
1317	(109,110) I	KANKAKEE	7	1
		ILLINOIS	CONTRACT NO. 66F16	

INDEX OF SHEETS

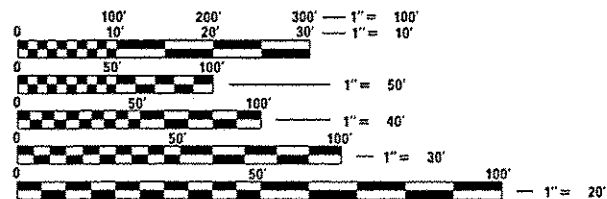
- 1 COVER SHEET
- 2 GENERAL NOTES
- 3 SUMMARY OF QUANTITIES
- 4 TYPICAL SECTIONS
- 5 SCHEDULES
- 6-7 DETAILS

STANDARDS

- 000001-06 STANDARD SYMBOLS, ABBREVIATIONS AND PATTERNS
- 001006 DECIMAL OF AN INCH AND OF A FOOT
- 406201-01 MAILBOX TURNOUT
- 482001-02 HMA SHOULDER ADJACENT TO FLEXIBLE PAVEMENT
- 482006-03 HMA SHOULDER ADJACENT TO RIGID PAVEMENT
- 642006 SHOULDER RUMBLE STRIPS, 8 INCH
- 701006-05 OFF-ROAD OPERATIONS 2L, 2W, 15' (4.5 m) TO 24" (600 mm) FROM PAVEMENT EDGE
- 701311-03 LANE CLOSURE, 2L, 2W, MOVING OPERATIONS - DAY ONLY
- 701326-04 LANE CLOSURE, 2L, 2W, PAVEMENT WIDENING, FOR SPEEDS ≥ 45 MPH
- 701901-05 TRAFFIC CONTROL DEVICES
- 701011-04 OFF-RD MOVING OPERATIONS 2L, 2W, DAY ONLY

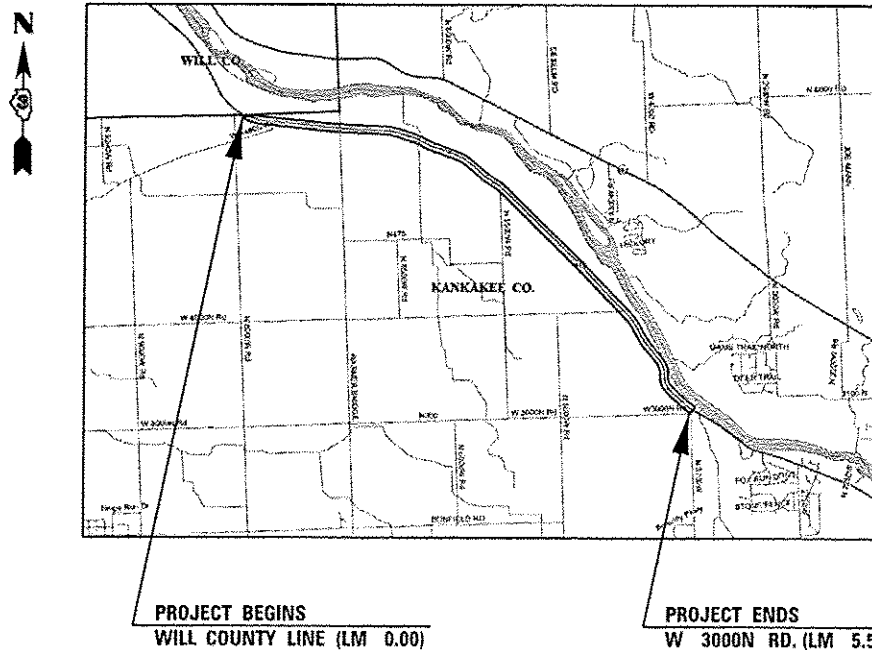


RURAL MAJOR COLLECTOR
 2013 ADT = 2950
 P.V. = 86.4% S.U. = 3.4% M.U. = 10.2%



FULL SIZE PLANS HAVE BEEN PREPARED USING STANDARD ENGINEERING SCALES. REDUCED SIZED PLANS WILL NOT CONFORM TO STANDARD SCALES. IN MAKING MEASUREMENTS ON REDUCED PLANS, THE ABOVE SCALES MAY BE USED.

J.U.L.I.E.
 JOINT UTILITY LOCATION INFORMATION FOR EXCAVATION
 1-800-892-0123
 OR 811



GROSS AND NET LENGTH = 29,462 FT. = 5.58 MILES

PROJECT ENGINEER: JOE KANNEL, P.E.
 UNIT CHIEF: MARC BUDZYNSKI
 DISTRICT 3 NO. (815) 434-6131
 CONTRACT NO. 66F16

STATE OF ILLINOIS
 DEPARTMENT OF TRANSPORTATION
 DIVISION OF HIGHWAYS

SUBMITTED March 18, 2016
Paul Latta, P.E.
 DEPUTY DIRECTOR OF HIGHWAYS, REGION ENGINEER

Matthew M. Addison, P.E.
 acting ENGINEER OF DESIGN AND ENVIRONMENT

Shir Osman, P.E.
 DIRECTOR OF HIGHWAYS, CHIEF ENGINEER

PRINTED BY THE AUTHORITY
 OF THE STATE OF ILLINOIS

GENERAL NOTES

THE THICKNESS OF HMA SHOWN ON THE PLANS IS THE NOMINAL THICKNESS. DEVIATIONS FROM THE NOMINAL THICKNESS WILL BE PERMITTED WHEN SUCH DEVIATIONS OCCUR DUE TO IRREGULARITIES IN THE EXISTING SURFACE OR BASE ON WHICH THE HMA IS PLACED.

THE HMA SURFACE OF ALL MAILBOX TURNOUTS, PRIVATE ENTRANCES, COMMERCIAL ENTRANCES, AND SIDE ROADS SHALL BE MADE NEATLY, IN A WORKMANLIKE MANNER, AND SHALL ACCURATELY CONFORM TO THE SHAPES AND DIMENSIONS SHOWN ON THE PLAN DETAILS. IF REQUIRED BY THE ENGINEER, THE CONTRACTOR SHALL SAW CUT THE HMA SURFACE TO CONFORM TO THE SHAPES AND DIMENSIONS SHOWN ON THE PLAN DETAILS. THIS WORK WILL BE INCLUDED IN THE COST OF THE HMA SURFACE.

THE ENGINEER WILL BE THE SOLE JUDGE CONCERNING CURING TIME FOR THE VARIOUS HMA LIFTS.

FOR STABILIZATION, ALL TYPE III BARRICADES WILL REQUIRE A MINIMUM OF FOUR SAND BAGS PER BARRICADE.

SEEDING WILL NOT BE PERMITTED AT ANY TIME WHEN THE GROUND IS FROZEN, WET, OR IN AN UNTILLABLE CONDITION. LOCATIONS TO BE SEEDED WILL BE DETERMINED BY THE ENGINEER.

ALL EXCAVATED MATERIAL, WHICH INCLUDES DIGGING OR GRADING OF ANY SOIL OR FILL MATERIAL, WITH THE EXCEPTION OF AGGREGATE FILLS, MUST BE INCORPORATED WITHIN THE IDOT RIGHT OF WAY DUE TO ENVIRONMENTAL DOCUMENTATION REQUIREMENTS.

ANY REFERENCE TO A STANDARD IN THESE PLANS SHALL BE INTERPRETED TO MEAN THE EDITION AS INDICATED BY THE SUBNUMBER SHOWN IN THE LIST OF STANDARDS OR THE COPY INCLUDED IN THESE PLANS.

THE FOLLOWING RATES OF APPLICATION HAVE BEEN USED IN CALCULATING PLAN QUANTITIES:

HMA RESURFACING	112	LBS / SQ YD / IN
-----------------	-----	------------------

ALL DAMAGE TO DEPARTMENT OWNED UNDERGROUND FACILITIES, CAUSED BY THE CONTRACTOR SHALL BE REPAIRED TO THE SATISFACTION OF THE DEPARTMENT AT THE CONTRACTOR'S EXPENSE. THIS SHALL INCLUDE ALL TEMPORARY REPAIRS REQUIRED TO KEEP THE FACILITY OPERATIONAL WHILE MATERIAL IS BEING OBTAINED TO MAKE PERMANENT REPAIRS. SPLICING OF ELECTRIC CABLE WILL NOT BE ALLOWED. ELECTRIC CABLE SHALL BE REPLACED FROM POLE TO POLE OR CONTROLLER.

THE CONTRACTOR SHALL CONTACT JULIE AT LEAST 48 HOURS PRIOR TO EXCAVATION TO DETERMINE WHICH UTILITIES ARE IN THE AREA.

COMMITMENTS:

HMA MIXTURE REQUIREMENT TABLE			
LOCATION(S):	LOG MILE 0.00 TO 5.58		
MIXTURE USE(S):	SHOULDER BOTTOM LIFT(S)	SHOULDER TOP LIFT (2")	MAILBOX TURNOUTS
BINDER GRADE (PG):	PG 64-22	PG 64-22	PG 64-22
DESIGN AIR VOIDS:	4.0% @ N50	4.0% @ N50	4.0% @ N50
MIXTURE COMPOSITION: (MIXTURE GRADATION)	IL-19.0 FG	IL-9.5 FG	IL-9.5 FG
FRICTION AGGREGATE:	-	MIXTURE C	MIXTURE C
MIXTURE WEIGHT:	112.0 LB/SY/IN	112.0 LB/SY/IN	112.0 LB/SY/IN
QUALITY MANAGEMENT PROGRAM:	QC/QA	QC/QA	QC/QA
SUBLOT SIZE:	N/A	N/A	N/A
DENSITY TEST METHOD:	CORES	% GROWTH CURVE	SATISFACTION OF THE ENGINEER

STATE OF ILLINOIS
DEPARTMENT OF TRANSPORTATION
DISTRICT THREE
AS BUILT INFORMATION

SUPERVISING CONSTRUCTION FIELD ENGINEER

RESIDENT ENGINEER / TECHNICIAN

START & END DATES
OF CONSTRUCTION:

INSPECTORS:

STATE OF ILLINOIS
DEPARTMENT OF TRANSPORTATION
DISTRICT THREE

PREPARED BY: Tom Beniel
DISTRICT STUDIES & PLANS ENGINEER

DATE: March 18, 2016

EXAMINED BY: [Signature]
DISTRICT CONSTRUCTION ENGINEER

[Signature]
DISTRICT MATERIALS ENGINEER
[Signature]
DISTRICT OPERATIONS ENGINEER

STATE OF ILLINOIS
DEPARTMENT OF TRANSPORTATION

GENERAL NOTES

FILE NAME *	USER NAME * budzynskim	DESIGNED -	REVISED -	STATE OF ILLINOIS DEPARTMENT OF TRANSPORTATION	GENERAL NOTES	F.A.S. RTE.	SECTION	COUNTY	TOTAL SHEETS	SHEET NO.	
p:\11084EBID\INTEC\Illinois.gov\PIDOT\Documents\DOT Offices\District 3\Projects\0366716-shr-details.dgn	DRKWD	CHECKED -	REVISED -			1317	(109,110) 1	KANKAKEE	7	2	
PLOT SCALE * 100.0000' / in.	DATE -	REVISED -	REVISED -			SCALE:	SHEET	OF	SHEETS	STA.	TO STA.
PLOT DATE * 3/18/2016	DATE -	REVISED -	REVISED -			CONTRACT NO. 66F16 [ILLINOIS] FED. AID PROJECT					

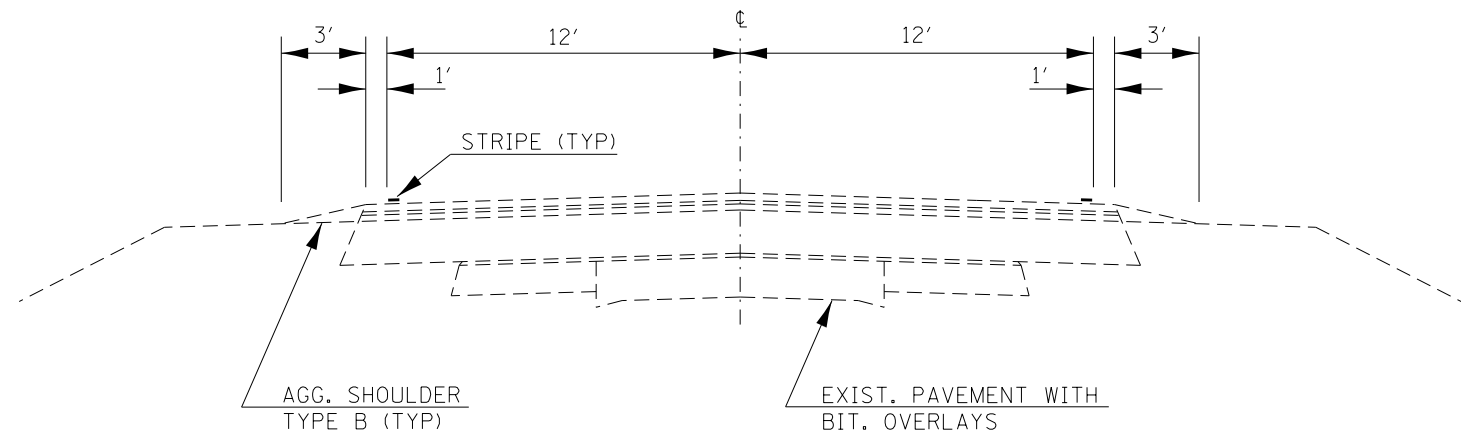
CONSTR. CODE
90% FED.
10% STATE

CODE NO.	ITEM	UNIT	TOTAL QUANTITY	ROADWAY	
				0021	RURAL
20200600	EXCAVATING AND GRADING EXISTING SHOULDER	UNIT	577		577
40600290	BITUMINOUS MATERIALS (TACK COAT)	POUND	11466		11466
40800050	INCIDENTAL HOT-MIX ASPHALT SURFACING	TON	13.8		13.8
44000157	HOT-MIX ASPHALT SURFACE REMOVAL, 2"	SQ YD	124.1		124.1
48203029	HOT-MIX ASPHALT SHOULDERS, 8"	SQ YD	25626		25626
64200108	SHOULDER RUMBLE STRIPS, 8 INCH	FOOT	57657		57657
67100100	MOBILIZATION	LSUM	1.0		1.0
70100500	TRAFFIC CONTROL AND PROTECTION, STANDARD 701326	LSUM	1.0		1.0
70103815	TRAFFIC CONTROL SURVEILLANCE	CAL DA	5		5
* 78001110	PAINT PAVEMENT MARKING - LINE 4"	FOOT	115314		115314
X0800001	SHOULDER REMOVAL (SPECIAL)	SQ YD	25626		25626
Z0030850	TEMPORARY INFORMATION SIGNING	SQ FT	42		42

12

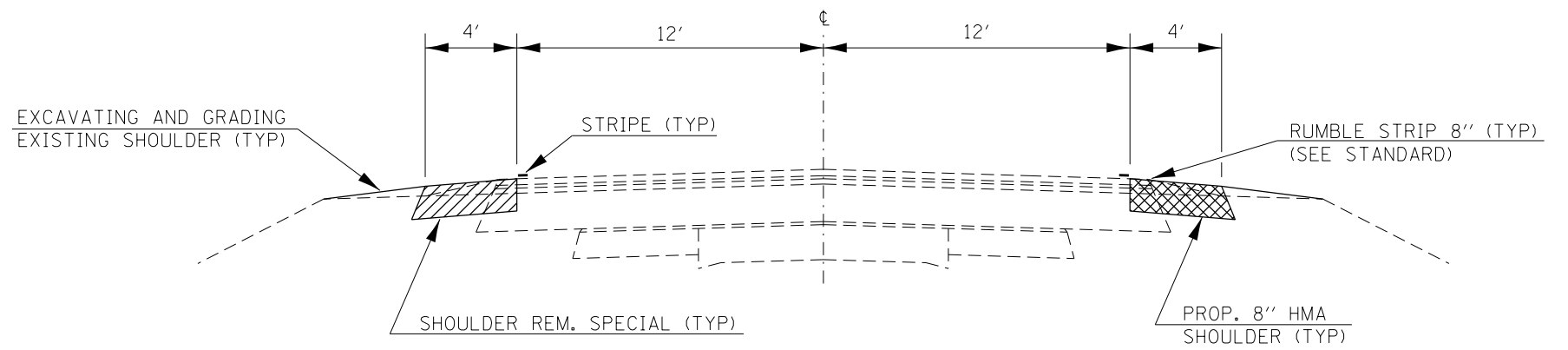
*Specialty Items

FILE NAME *	USER NAME * budzynahim	DESIGNED -	REVISED -	STATE OF ILLINOIS DEPARTMENT OF TRANSPORTATION	SUMMARY OF QUANTITIES				F.A.S. RTE.	SECTION	COUNTY	TOTAL SHEETS	SHEET NO.
p:\IL\884EBID\INTEG\illinois.gov\PM\DOT\Documents\YDOT Offices\District 3\Projects\03666666\03666666\03666666-shr-detail.dgn		CHECKED -	REVISED -						1317	(109.110) 1	KANKAKEE	7	3
PLOT SCALE * 100.0000' / in.		DATE -	REVISED -		SCALE:	SHEET	OF	SHEETS	STA.	TO STA.	CONTRACT NO. 66F16		
PLOT DATE * 3/18/2016					ILLINOIS FED. AID PROJECT								



EXISTING TYPICAL SECTION

LM 0.00 TO LM 5.58



PROPOSED TYPICAL SECTION

LM 0.00 TO LM 5.58

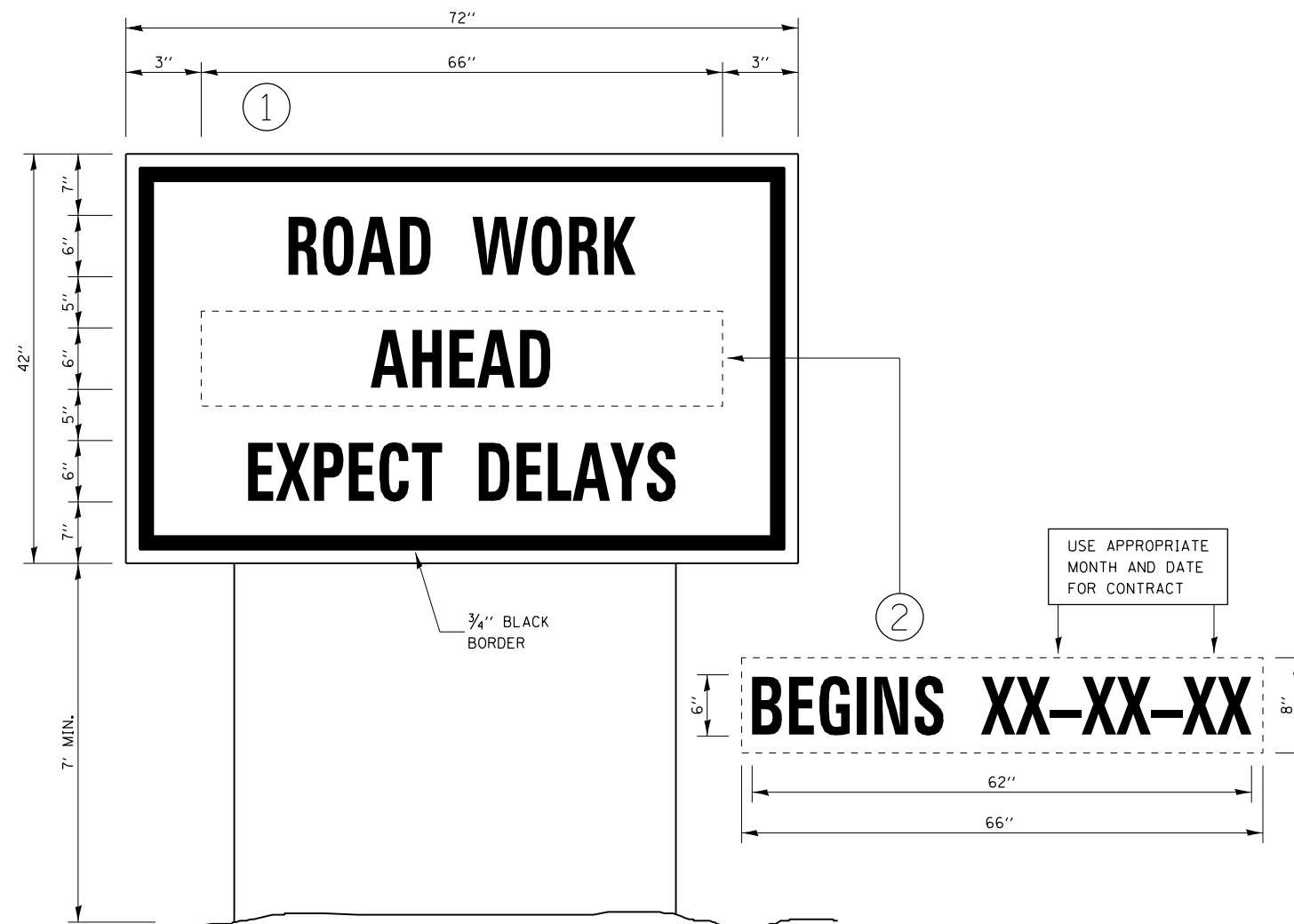
FILE NAME =	USER NAME = budzynskim	DESIGNED -	REVISED -	STATE OF ILLINOIS DEPARTMENT OF TRANSPORTATION	TYPICAL SECTIONS				F.A.S. RTE.	SECTION	COUNTY	TOTAL SHEETS	SHEET NO.
p:\11\084EBIDINTEG.illinois.gov\PIWIDOT\Documents\DOT Offices\District 3\Projects\0366\Drawings\0366F16-sht-details.dgn		CHECKED -	REVISED -						1317	(109.110) I	KANKAKEE	7	4
PLOT SCALE = 100.0000' / 1in.		DATE -	REVISED -		CONTRACT NO. 66F16				ILLINOIS FED. AID PROJECT				
PLOT DATE = 3/18/2016					SCALE:	SHEET	OF	SHEETS	STA.	TO	STA.		

SHOULDER REMOVAL & REPLACEMENT SCHEDULE									
LOCATION			SIDE	LENGTH	SHOULDER REMOVAL (SPECIAL)	HMA SHOULDERS 8"	BIT MTLs (TACK COAT)	SHOULDER RUMBLE STRIPS 8"	PAINT PVMt MARKING WHITE 4"
L.M.	TO	L.M.	LT / RT	FOOT	SQ YD	SQ YD	POUND	FOOT	FOOT
0.00	TO	0.19	LT & RT	1003	892	892	401	2006	4012
0.19	TO	0.43	RT	1267	563	563	127	1267	2534
0.43	TO	5.58	LT & RT	27192	24171	24171	10877	54384	108768
TOTAL				29462	25626	25626	11405	57657	115314

MAILBOX TURNOUT REMOVAL & REPLACEMENT SCHEDULE					
L.M. / SIDE		AREA	HMA SURF REMOVAL 2"	INCIDENTAL HMA SURF 2"	BIT MTLs (TACK COAT)
		SQ YD	SQ YD	TON	POUND
0.48	RT	6.5	6.5	0.7	3
1.21	LT	-	-	-	-
1.28	LT	14.3	14.3	1.6	7
1.37	LT	10.0	10.0	1.1	5
1.41	LT	12.7	12.7	1.4	6
1.45	LT	18.9	18.9	2.1	9
1.77	LT	4.1	4.1	0.5	2
2.88	LT	0.3	0.3	0.1	1
3.08	RT	10.5	10.5	1.2	5
3.18	LT	-	-	-	-
3.42	LT	2.2	2.2	0.2	1
3.58	LT	1.2	1.2	0.1	1
3.92	LT	8.0	8.0	0.9	4
5.01	LT	9.3	9.3	1.0	5
5.06	LT	19.9	19.9	2.2	9
5.13	LT	6.2	6.2	0.7	3
TOTAL		124.1	124.1	13.8	61

The first 4 feet of the MBTO adjacent to the traveled way is paid as Shoulder Removal (Special) and HMA Shoulders 8"
The remaining area of the MBTO is paid as HMA Surface Removal 2" and Incidental HMA Surface 2"

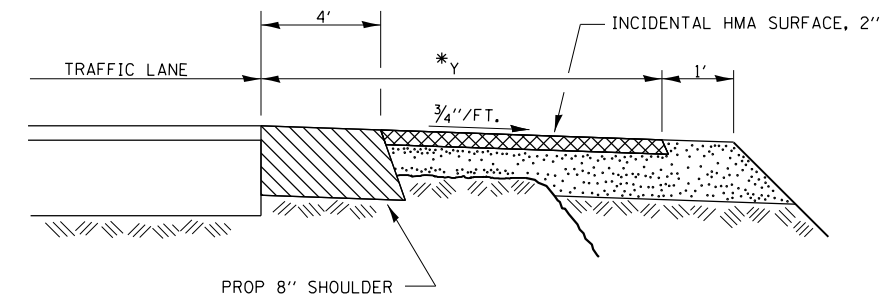
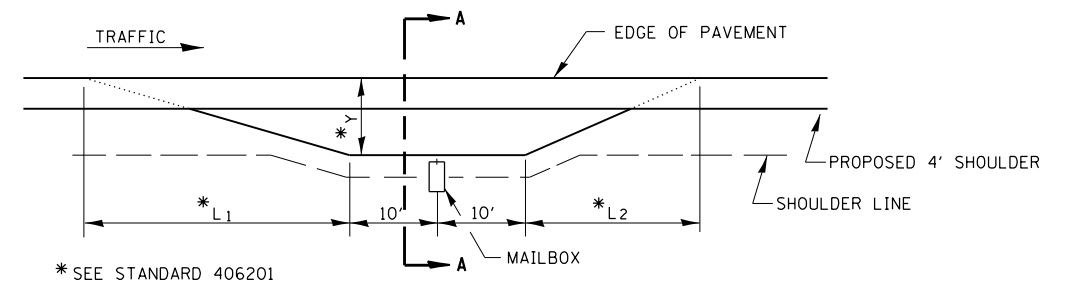
FILE NAME =	USER NAME = budzynskim	DESIGNED -	REVISED -	STATE OF ILLINOIS DEPARTMENT OF TRANSPORTATION	SCHEDULES	F.A.S. RTE.	SECTION	COUNTY	TOTAL SHEETS	SHEET NO.
p:\11\084EBIDINTEG.illinois.gov\PI\DOT\Documents\DOT Offices\District 3\Projects\0366\DRAWING\0366F16-sht-details.dgn	PLotted	CHECKED -	REVISED -			1317	(109.110) I	KANKAKEE	7	5
PLOT SCALE = 100.0000' / 1in.	DATE -	REVISED -	REVISED -			CONTRACT NO. 66F16			ILLINOIS FED. AID PROJECT	
PLOT DATE = 3/18/2016	DATE -	REVISED -	REVISED -			SCALE:	SHEET	OF	SHEETS	STA.



TEMPORARY INFORMATION SIGNING

NOTES:

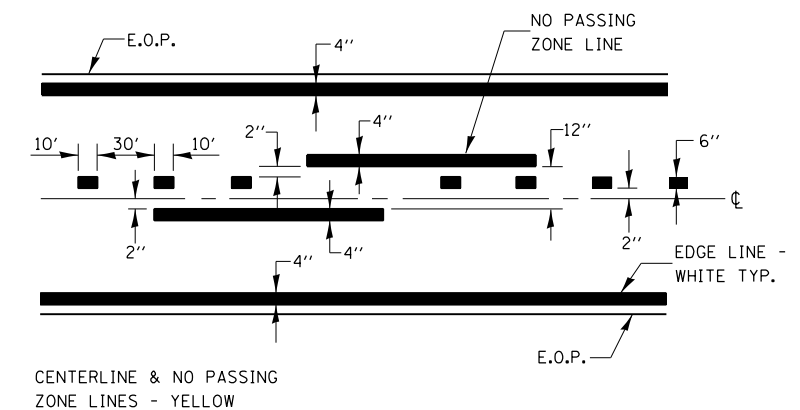
1. USE 6" D BLACK LETTERING ON FLOURESENT ORANGE BACKGROUND.
2. ERECT SIGNS AT LOCATIONS IN ADVANCE OF THE "ROAD CONSTRUCTION AHEAD" SIGNS AS DIRECTED BY THE ENGINEER.
3. ERECT SIGN ① WITH INSTALLED PANEL ② A MINIMUM OF ONE WEEK PRIOR TO THE START OF THE LANE CLOSURE.
4. REMOVE PANEL ② ON THAT DATE.
5. SEE SPECIAL PROVISION "TEMPORARY INFORMATION SIGNING" FOR ADDITIONAL INFORMATION.
6. WILL BE PAID FOR PER SQ FT AS "TEMPORARY INFORMATION SIGNING". EACH SIGN = 21 SQ FT AND THE DATE PANEL ② WILL NOT BE MEASURED SEPARATELY FOR PAYMENT.



SECTION A-A

NOTE: PLAN AND SECTION VIEW DETAILS ARE INCLUDED FOR INFORMATION ONLY. ACTUAL DIMENSIONS MAY VARY.

RURAL MAILBOX TURNOUT DETAILS (NTS)



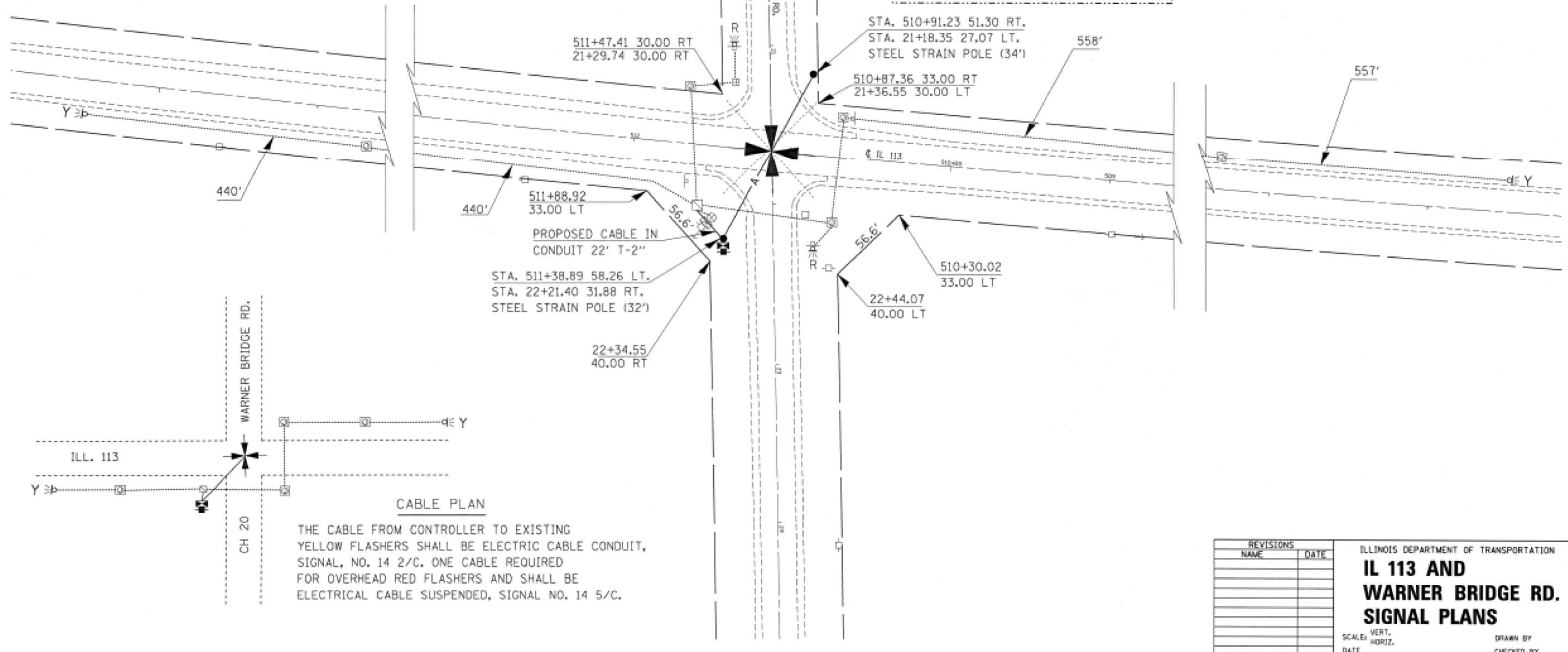
PAVEMENT MARKING

FILE NAME =	USER NAME = budzynskim	DESIGNED -	REVISED -	STATE OF ILLINOIS DEPARTMENT OF TRANSPORTATION	DETAILS		F.A.S. RTE.	SECTION	COUNTY	TOTAL SHEETS	SHEET NO.
p:\11\084EBIDINTEG.illinois.gov\PIWIDOT\Documents\IDOT Offices\District 3\Projects\0366\DRAWING\0366F16-sht-details.dgn	PLOT SCALE = 100.0000' / 1in.	CHECKED -	REVISED -				1317	(109.110) I	KANKAKEE	7	6
	PLOT DATE = 3/18/2016	DATE -	REVISED -		SCALE: SHEET OF SHEETS STA. TO STA.		CONTRACT NO. 66F16				
							ILLINOIS FED. AID PROJECT				

FOR INFORMATION ONLY



- PROPOSED FLASHING BEACON
SPAN WIRE MOUNTED (ALL RED)
- EXISTING SERVICE POLE
- EXISTING JUNCTION BOX
- EXISTING CONTROLLER
- EXISTING HANDHOLE
- EXISTING CONDUIT TO BE REUSED
- EXISTING SERVICE INSTALLATION
- EXISTING SIGN WITH FLASHER (YELLOW)
- EXISTING SIGN WITH FLASHER (RED)
(FLASHER TO BE REMOVED)
- PROPOSED ELECTRICAL CABLE AERIAL SUSPENDED
- PROPOSED STEEL STRAIN POLE
- PROPOSED ELECTRICAL CABLE
- PROPOSED SERVICE INSTALLATION
- PROPOSED CONTROLLER



CABLE PLAN

THE CABLE FROM CONTROLLER TO EXISTING YELLOW FLASHERS SHALL BE ELECTRIC CABLE CONDUIT, SIGNAL, NO. 14 2/C. ONE CABLE REQUIRED FOR OVERHEAD RED FLASHERS AND SHALL BE ELECTRICAL CABLE SUSPENDED, SIGNAL NO. 14 5/C.

REVISIONS	
NAME	DATE

ILLINOIS DEPARTMENT OF TRANSPORTATION

IL 113 AND WARNER BRIDGE RD. SIGNAL PLANS

SCALE: VERT. _____
 HORIZ. _____

DRAWN BY _____
CHECKED BY _____

FILE NAME =	USER NAME = budzynskm	DESIGNED -	REVISED -
pw:\IL084EBIDINTEG.illinois.gov\PIWIDOT\Documents\IDOT Offices\District 3\Projects\0366\DRAWING\0366F16-sht-details.dgn		CHECKED -	REVISED -
PLOT SCALE = 100.0000' / in.		DATE -	REVISED -
PLOT DATE = 3/18/2016			

STATE OF ILLINOIS
DEPARTMENT OF TRANSPORTATION

DETAILS

SCALE:	SHEET	OF	SHEETS	STA.	TO	STA.
--------	-------	----	--------	------	----	------

F.A.S. RTE.	SECTION	COUNTY	TOTAL SHEETS	SHEET NO.
1317	(109.110) I	KANKAKEE	7	7
CONTRACT NO. 66F16				
ILLINOIS FED. AID PROJECT				