

# PROPOSED HIGHWAY PLANS

FAP ROUTE 635 (IL 114)

SECTION (105) I-3

PROJECT : ACHSIP-0635(009)

SHOULDER WIDENING & RUMBLE STRIPS  
KANKAKEE COUNTY

C-93-028-16

F.A.P. RTE.	SECTION	COUNTY	TOTAL SHEETS	SHEET NO.
635	(105) I-3	KANKAKEE	6	1
ILLINOIS			CONTRACT NO. 66F17	

INDEX OF SHEETS

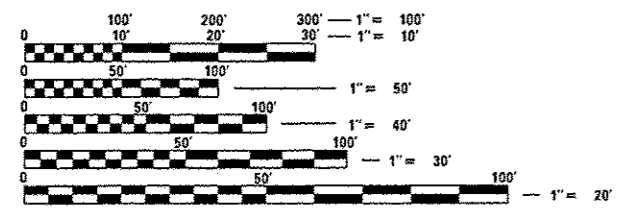
- 1 COVER SHEET
- 2 GENERAL NOTES
- 3 SUMMARY OF QUANTITIES
- 4 TYPICAL SECTIONS
- 5 SCHEDULES
- 6 DETAILS

STANDARDS

- 000001-06 STANDARD SYMBOLS, ABBREVIATIONS AND PATTERNS
- 001006 DECIMAL OF AN INCH AND OF A FOOT
- 408201-01 MAILBOX TURNOUT
- 482001-02 HMA SHOULDER ADJACENT TO FLEXIBLE PAVEMENT
- 482006-03 HMA SHOULDER ADJACENT TO RIGID PAVEMENT
- 642006 SHOULDER RUMBLE STRIPS, 8 INCH
- 701006-05 OFF-ROAD OPERATIONS 2L, 2W, 15' (4.5 m) TO 24" (600 mm) FROM PAVEMENT EDGE
- 701311-03 LANE CLOSURE, 2L, 2W, MOVING OPERATIONS - DAY ONLY
- 701326-04 LANE CLOSURE, 2L, 2W, PAVEMENT WIDENING, FOR SPEEDS ≥ 45 MPH
- 701901-05 TRAFFIC CONTROL DEVICES
- 701011-04 OFF-RD MOVING OPERATIONS, 2L, 2W, DAY ONLY



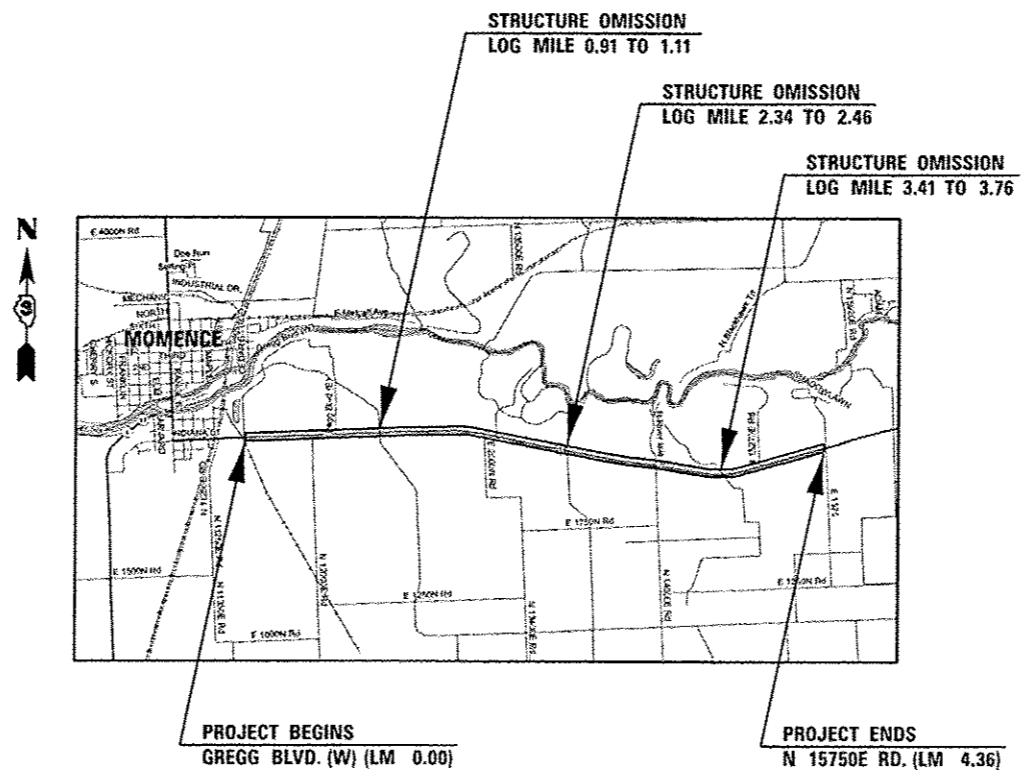
RURAL MINOR ARTERIAL  
2013 ADT = 4600  
P.V. = 59.8% S.U. = 30.4% M.U. = 9.8%



FULL SIZE PLANS HAVE BEEN PREPARED USING STANDARD ENGINEERING SCALES. REDUCED SIZED PLANS WILL NOT CONFORM TO STANDARD SCALES. IN MAKING MEASUREMENTS ON REDUCED PLANS, THE ABOVE SCALES MAY BE USED.

J.U.L.I.E.  
JOINT UTILITY LOCATION INFORMATION FOR EXCAVATION  
1-800-892-0123  
OR 811

PROJECT ENGINEER: JOE KANNEL, P.E.  
UNIT CHIEF: MARC BUDZYNSKI  
DISTRICT 3 NO. (815) 434-6131  
CONTRACT NO. 66F17



GROSS LENGTH = 23,022 FT. = 4.36 MILES  
NET LENGTH = 19,484 FT. = 3.69 MILES

STATE OF ILLINOIS  
DEPARTMENT OF TRANSPORTATION  
DIVISION OF HIGHWAYS

SUBMITTED *March 18 20 16*

*Paul Coctaris*  
DEPUTY DIRECTOR OF HIGHWAYS, REGION ENGINEER

*Maureen M. Addis PE*  
ENGINEER OF DESIGN AND ENVIRONMENT

*Omair Osman PE*  
DIRECTOR OF HIGHWAYS/CHIEF ENGINEER

PRINTED BY THE AUTHORITY  
OF THE STATE OF ILLINOIS

GENERAL NOTES

THE THICKNESS OF HMA SHOWN ON THE PLANS IS THE NOMINAL THICKNESS. DEVIATIONS FROM THE NOMINAL THICKNESS WILL BE PERMITTED WHEN SUCH DEVIATIONS OCCUR DUE TO IRREGULARITIES IN THE EXISTING SURFACE OR BASE ON WHICH THE HMA IS PLACED.

THE HMA SURFACE OF ALL MAILBOX TURNOUTS, PRIVATE ENTRANCES, COMMERCIAL ENTRANCES, AND SIDE ROADS SHALL BE MADE NEATLY, IN A WORKMANLIKE MANNER, AND SHALL ACCURATELY CONFORM TO THE SHAPES AND DIMENSIONS SHOWN ON THE PLAN DETAILS. IF REQUIRED BY THE ENGINEER, THE CONTRACTOR SHALL SAW CUT THE HMA SURFACE TO CONFORM TO THE SHAPES AND DIMENSIONS SHOWN ON THE PLAN DETAILS. THIS WORK WILL BE INCLUDED IN THE COST OF THE HMA SURFACE.

THE ENGINEER WILL BE THE SOLE JUDGE CONCERNING CURING TIME FOR THE VARIOUS HMA LIFTS.

FOR STABILIZATION, ALL TYPE III BARRICADES WILL REQUIRE A MINIMUM OF FOUR SAND BAGS PER BARRICADE.

SEEDING WILL NOT BE PERMITTED AT ANY TIME WHEN THE GROUND IS FROZEN, WET, OR IN AN UNTILLABLE CONDITION. LOCATIONS TO BE SEEDED WILL BE DETERMINED BY THE ENGINEER.

ALL EXCAVATED MATERIAL, WHICH INCLUDES DIGGING OR GRADING OF ANY SOIL OR FILL MATERIAL, WITH THE EXCEPTION OF AGGREGATE FILLS, MUST BE INCORPORATED WITHIN THE IDOT RIGHT OF WAY DUE TO ENVIRONMENTAL DOCUMENTATION REQUIREMENTS.

ANY REFERENCE TO A STANDARD IN THESE PLANS SHALL BE INTERPRETED TO MEAN THE EDITION AS INDICATED BY THE SUBNUMBER SHOWN IN THE LIST OF STANDARDS OR THE COPY INCLUDED IN THESE PLANS.

THE FOLLOWING RATES OF APPLICATION HAVE BEEN USED IN CALCULATING PLAN QUANTITIES:

HMA RESURFACING	112	LBS / SQ YD / IN
-----------------	-----	------------------

THE CONTRACTOR SHALL CONTACT JULIE AT LEAST 48 HOURS PRIOR TO EXCAVATION TO DETERMINE WHICH UTILITIES ARE IN THE AREA.

COMMITMENTS:

HMA MIXTURE REQUIREMENT TABLE			
LOCATION(S):	LOG MILE 0.00 TO 4.36		
MIXTURE USE(S):	SHOULDER BOTTOM LIFT(S)	SHOULDER TOP LIFT (2")	MAILBOX TURNOUTS
BINDER GRADE (PG):	PG 64-22	PG 64-22	PG 64-22
DESIGN AIR VOIDS:	4.0% @ N50	4.0% @ N50	4.0% @ N50
MIXTURE COMPOSITION: (MIXTURE GRADATION)	IL-19.0 FG	IL-9.5 FG	IL-9.5 FG
FRICTION AGGREGATE:	-	MIXTURE C	MIXTURE C
MIXTURE WEIGHT:	112.0 LB/SY/IN	112.0 LB/SY/IN	112.0 LB/SY/IN
QUALITY MANAGEMENT PROGRAM:	QC/OA	QC/OA	QC/OA
SUBLOT SIZE:	N/A	N/A	N/A
DENSITY TEST METHOD:	CORES	% GROWTH CURVE	SATISFACTION OF THE ENGINEER

STATE OF ILLINOIS  
DEPARTMENT OF TRANSPORTATION  
DISTRICT THREE  
AS BUILT INFORMATION

\_\_\_\_\_  
SUPERVISING CONSTRUCTION FIELD ENGINEER

\_\_\_\_\_  
RESIDENT ENGINEER / TECHNICIAN

START & END DATES  
OF CONSTRUCTION:

INSPECTORS:

\_\_\_\_\_  
\_\_\_\_\_  
\_\_\_\_\_

STATE OF ILLINOIS  
DEPARTMENT OF TRANSPORTATION  
DISTRICT THREE

PREPARED BY: Tom Beaulieu  
DISTRICT STUDIES & PLANS ENGINEER

DATE: March 18, 2016

EXAMINED BY: [Signature]  
DISTRICT CONSTRUCTION ENGINEER

[Signature]  
DISTRICT MATERIALS ENGINEER  
[Signature]  
DISTRICT OPERATIONS ENGINEER

STATE OF ILLINOIS  
DEPARTMENT OF TRANSPORTATION

GENERAL NOTES

FILE NAME *	USER NAME * budzynskim	DESIGNED -	REVISED -	STATE OF ILLINOIS DEPARTMENT OF TRANSPORTATION	GENERAL NOTES	F.A.P. RTE.	SECTION	COUNTY	TOTAL SHEETS	SHEET NO.	
p:\11\084EBID\INTEG\illinois.gov\PI\DOT\Documents\DOT Offices\District 3\Projects\036\DRAWING\010\0366F17-shr-details.dgn		CHECKED -	REVISED -			635	(105) 1-3	KANKAKEE	6	2	
PLOT SCALE * 100.0000' / in.		DATE -	REVISED -			CONTRACT NO. 66F17		ILLINOIS FED. AID PROJECT			
PLOT DATE * 2/26/2016						SCALE:	SHEET	OF	SHEETS	STA.	TO STA.

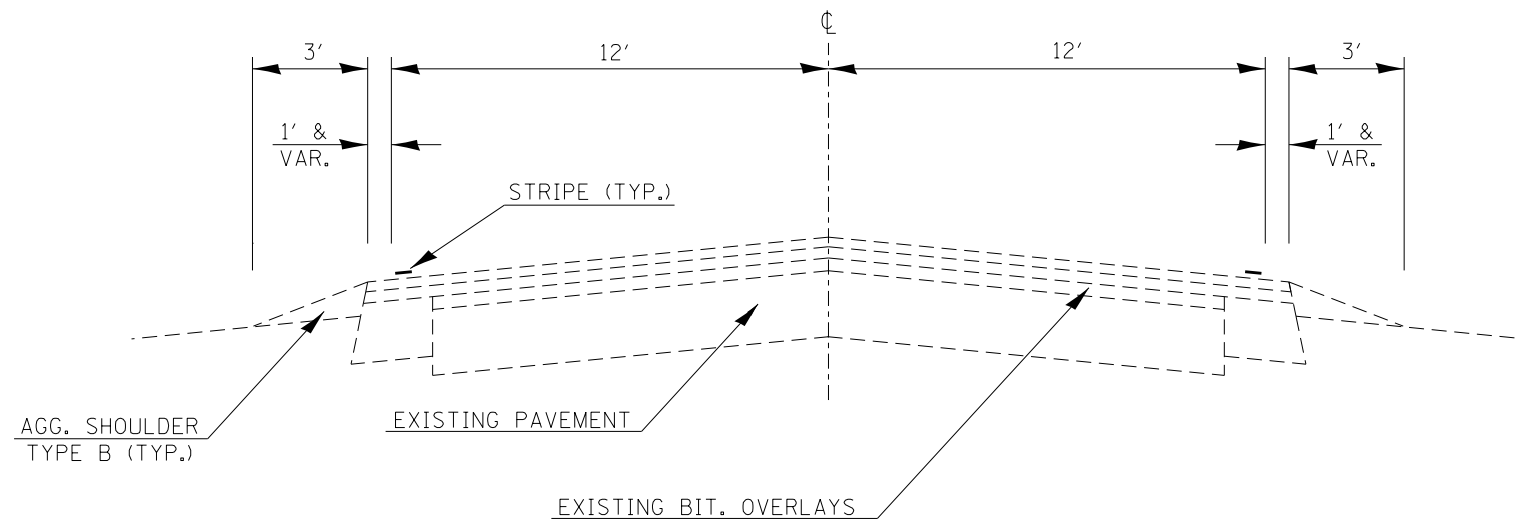
CONSTR. CODE  
90% FED.  
10% STATE

CODE NO.	ITEM	UNIT	TOTAL QUANTITY	ROADWAY	
				0021	RURAL
20200600	EXCAVATING AND GRADING EXISTING SHOULDER	UNIT	348		348
40600290	BITUMINOUS MATERIALS (TACK COAT)	POUND	6596		6596
40800050	INCIDENTAL HOT-MIX ASPHALT SURFACING	TON	16.5		16.5
44000157	HOT-MIX ASPHALT SURFACE REMOVAL, 2"	SQ YD	150		150
48203029	HOT-MIX ASPHALT SHOULDERS, 8"	SQ YD	15442		15442
64200108	SHOULDER RUMBLE STRIPS, 8 INCH	FOOT	40463		40463
67100100	MOBILIZATION	LSUM	1.0		1.0
70100500	TRAFFIC CONTROL AND PROTECTION, STANDARD 701326	LSUM	1.0		1.0
70103815	TRAFFIC CONTROL SURVEILLANCE	CAL DA	5		5
* 78001110	PAINT PAVEMENT MARKING - LINE 4"	FOOT	80926		80926
X0800001	SHOULDER REMOVAL (SPECIAL)	SQ YD	15442		15442
Z0030850	TEMPORARY INFORMATION SIGNING	SQ FT	42		42

12

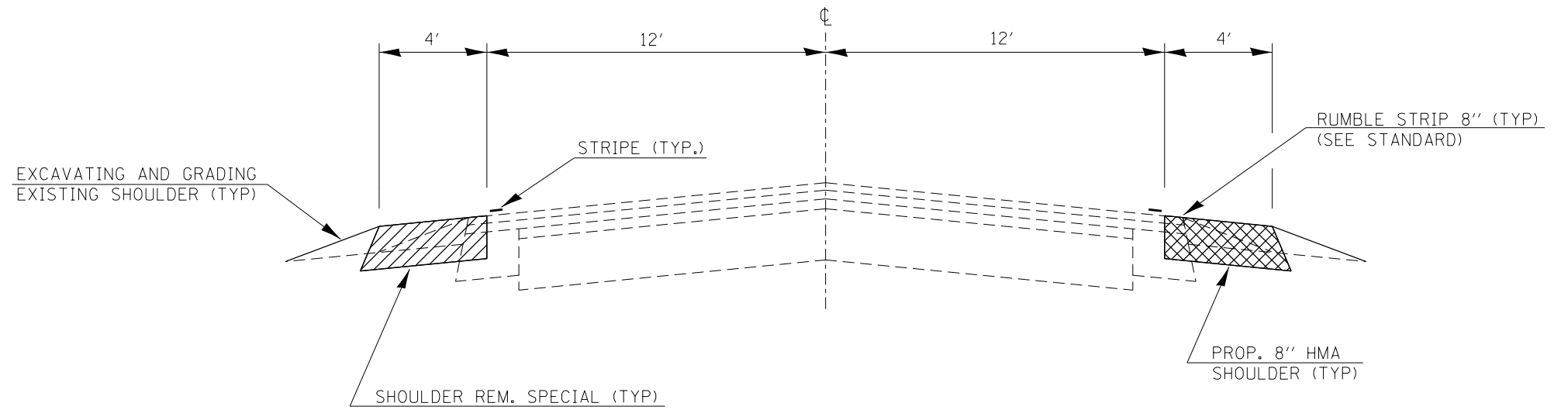
FILE NAME *	USER NAME * budzynahim	DESIGNED -	REVISED -	<b>STATE OF ILLINOIS DEPARTMENT OF TRANSPORTATION</b>	<b>SUMMARY OF QUANTITIES</b>			F.A.P. RTE.	SECTION	COUNTY	TOTAL SHEETS	SHEET NO.
pw:\ILR04EBIDINTEG\illinois.gov\PI001\Documents\DOT Offices\District 3\Projects\0366\Drawings\9366F17-ehs-detail.dgn	PLotted	CHECKED -	REVISED -					635	(105) I-3	KANKAKEE	6	3
PLOT SCALE * 100.0000' / 1"	DATE -	REVISED -	REVISED -		CONTRACT NO. 66F17			ILLINOIS FED. AID PROJECT				
PLOT DATE * 2/26/2016	DATE -	REVISED -	REVISED -		SCALE:	SHEET	OF	SHEETS	STA.	TO STA.		

\* Specialty Items



**EXISTING TYPICAL SECTION**

LM 0.00 TO 4.36



**PROPOSED TYPICAL SECTION**

LM 0.00 TO 4.36

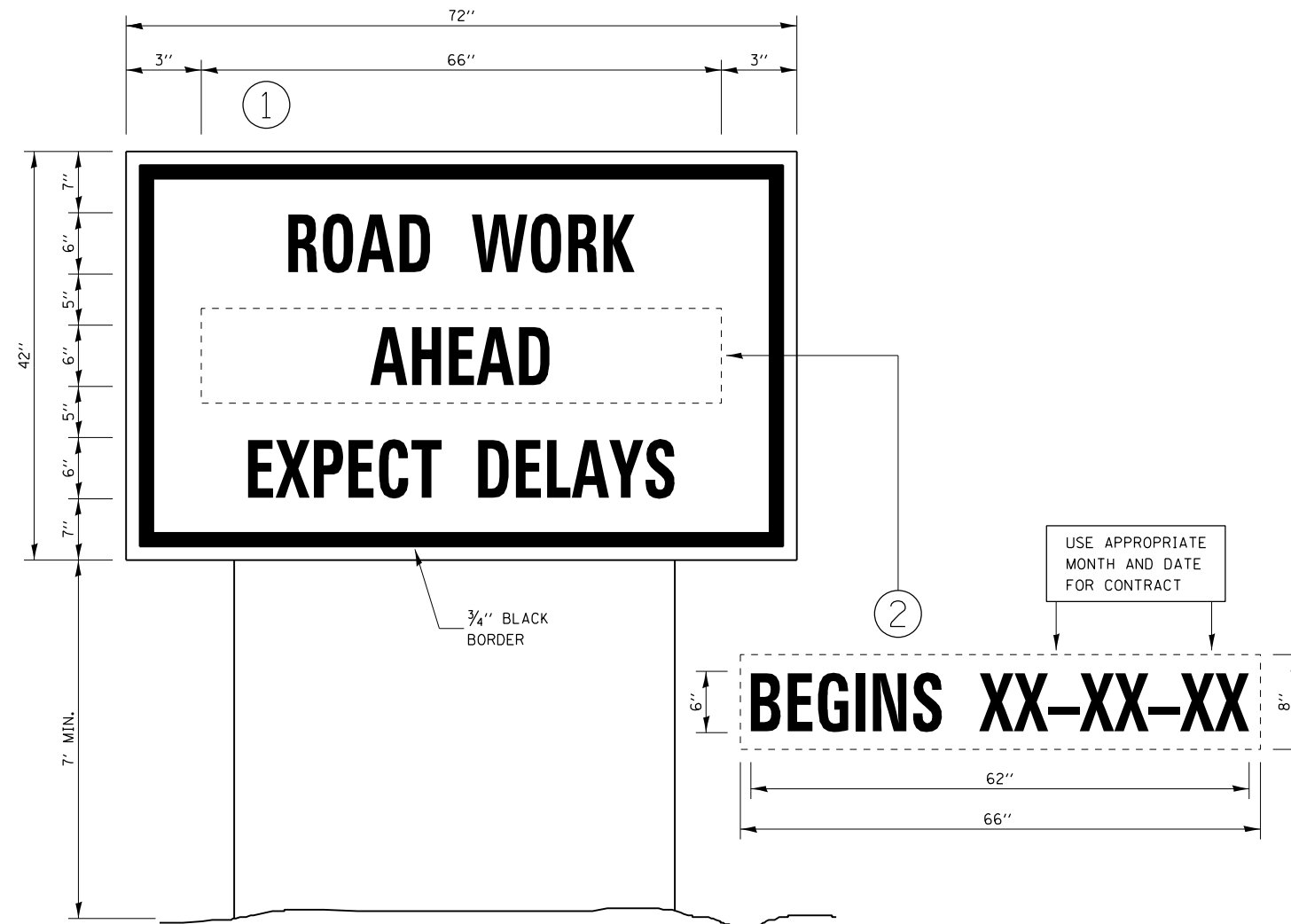
NOTE: SEE SCHEDULE FOR EXACT LOCATIONS OF PROPOSED WORK

FILE NAME =	USER NAME = budzynskim	DESIGNED -	REVISED -	<b>STATE OF ILLINOIS DEPARTMENT OF TRANSPORTATION</b>	<b>TYPICAL SECTIONS</b>			F.A.P. RTE.	SECTION	COUNTY	TOTAL SHEETS	SHEET NO.
p:\11\084EBIDINTEG.illinois.gov\PIWIDOT\Documents\DOT Offices\District 3\Projects\0366\DRAWING\0366F17-sht-details.dgn		CHECKED -	REVISED -					635	(105) I-3	KANKAKEE	6	4
PLOT SCALE = 100.0000' / 1in.		DATE -	REVISED -		CONTRACT NO. 66F17			ILLINOIS FED. AID PROJECT				
PLOT DATE = 2/26/2016					SCALE:	SHEET	OF	SHEETS	STA.	TO	STA.	

SHOULDER REMOVAL & REPLACEMENT SCHEDULE									
LOCATION			SIDE	LENGTH	SHOULDER REMOVAL (SPECIAL)	HMA SHOULDERS 8"	BIT MTLs (TACK COAT)	SHOULDER RUMBLE STRIPS 8"	PAINT PVMT MARKING WHITE 4"
L.M.	TO	L.M.	LT / RT	FOOT	SQ YD	SQ YD	POUND	FOOT	FOOT
0.00	TO	0.91	LT & RT	4805	4271	4271	1922	9610	19220
0.91	TO	1.11	LT & RT	1056	-	-	-	1200	2400
1.11	TO	1.52	LT & RT	2165	1924	1924	866	4330	8660
1.52	TO	1.77	LT	1320	587	587	132	1320	2640
1.77	TO	2.34	LT & RT	3010	2676	2676	1204	6020	12040
2.34	TO	2.46	LT & RT	634	-	-	-	1268	2536
2.46	TO	2.71	LT & RT	1320	1173	1173	528	2640	5280
2.71	TO	2.90	RT	1003	446	446	100	1003	2006
2.90	TO	2.94	LT	211	94	94	21	211	422
2.94	TO	2.99	LT & RT	264	235	235	106	528	1056
2.99	TO	3.17	LT	950	422	422	95	950	1900
3.17	TO	3.32	LT & RT	792	704	704	317	1584	3168
3.32	TO	3.36	LT	211	94	94	21	211	422
3.36	TO	3.38	LT & RT	106	94	94	42	212	424
3.38	TO	3.41	LT	158	70	70	16	158	316
3.41	TO	3.76	LT & RT	1848	-	-	-	3250	6500
3.76	TO	3.78	LT	106	47	47	11	106	212
3.78	TO	3.94	LT & RT	845	751	751	338	1690	3380
3.94	TO	3.96	LT	106	47	47	11	106	212
3.96	TO	4.02	LT & RT	317	282	282	127	634	1268
4.02	TO	4.05	LT	158	70	70	16	158	316
4.05	TO	4.36	LT & RT	1637	1455	1455	655	3274	6548
TOTAL				23022	15442	15442	6528	40463	80926

MAILBOX TURNOUT REMOVAL & REPLACEMENT SCHEDULE				
L.M. / SIDE	AREA	HMA SURF REMOVAL 2"	INCIDENTAL HMA SURF 2"	BIT MTLs (TACK COAT)
	SQ YD	SQ YD	TON	POUND
0.24	RT	10	10	4.5
0.45	LT	10	10	4.5
0.79	RT	10	10	4.5
1.31	RT	10	10	4.5
1.82	RT	10	10	4.5
1.85	RT	10	10	4.5
2.29	RT	10	10	4.5
2.55	RT	10	10	4.5
2.81	RT	10	10	4.5
2.96	RT	10	10	4.5
3.18	RT	10	10	4.5
3.26	RT	10	10	4.5
3.87	RT	10	10	4.5
3.90	RT	10	10	4.5
4.10	RT	10	10	4.5
TOTAL	150	150	16.5	68

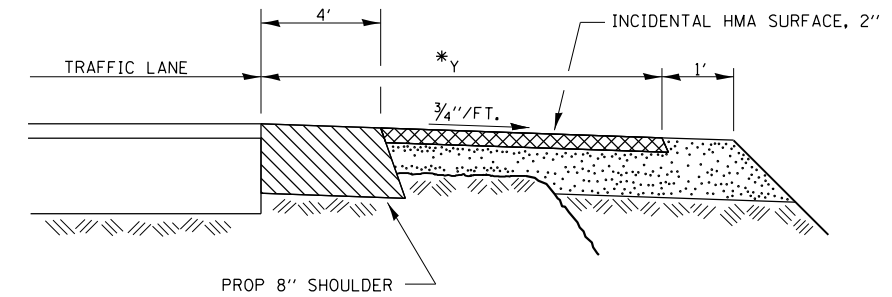
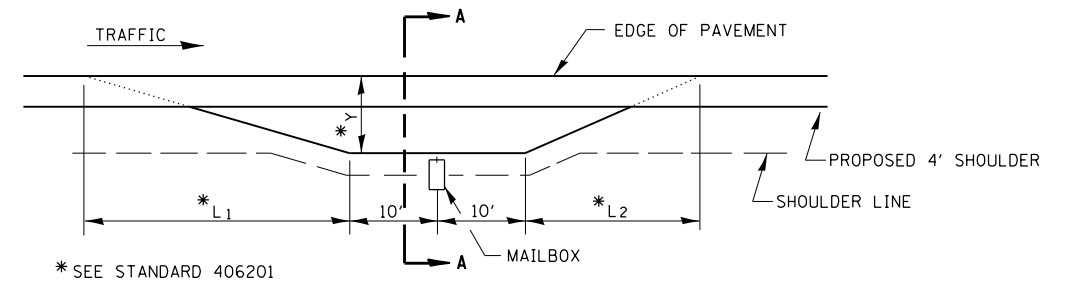
The first 4 feet of the MBTO adjacent to the traveled way is paid as Shoulder Removal (Special) and HMA Shoulders 8"  
The remaining area of the MBTO is paid as HMA Surface Removal 2" and Incidental HMA Surface 2"



### TEMPORARY INFORMATION SIGNING

#### NOTES:

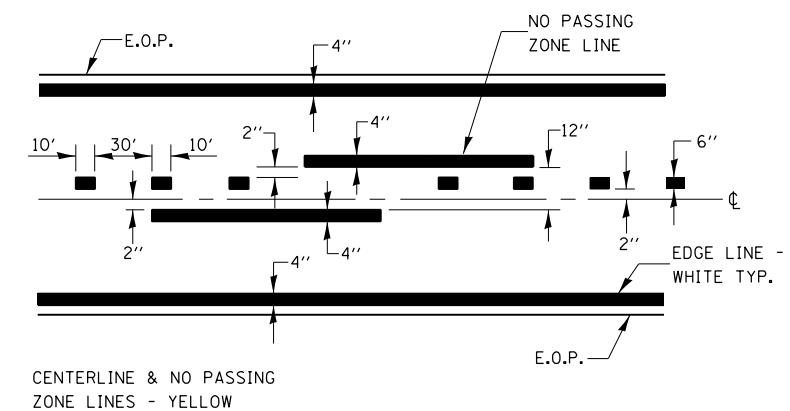
1. USE 6" D BLACK LETTERING ON FLOURESENT ORANGE BACKGROUND.
2. ERECT SIGNS AT LOCATIONS IN ADVANCE OF THE "ROAD CONSTRUCTION AHEAD" SIGNS AS DIRECTED BY THE ENGINEER.
3. ERECT SIGN ① WITH INSTALLED PANEL ② A MINIMUM OF ONE WEEK PRIOR TO THE START OF THE LANE CLOSURE.
4. REMOVE PANEL ② ON THAT DATE.
5. SEE SPECIAL PROVISION "TEMPORARY INFORMATION SIGNING" FOR ADDITIONAL INFORMATION.
6. WILL BE PAID FOR PER SQ FT AS "TEMPORARY INFORMATION SIGNING". EACH SIGN = 21 SQ FT AND THE DATE PANEL ② WILL NOT BE MEASURED SEPARATELY FOR PAYMENT.



### SECTION A-A

NOTE: PLAN AND SECTION VIEW DETAILS ARE INCLUDED FOR INFORMATION ONLY. ACTUAL DIMENSIONS MAY VARY.

### RURAL MAILBOX TURNOUT DETAILS (NTS)



### PAVEMENT MARKING

FILE NAME =	USER NAME = budzynskim	DESIGNED -	REVISED -	<b>STATE OF ILLINOIS DEPARTMENT OF TRANSPORTATION</b>	<b>DETAILS</b>	F.A.P. RTE.	SECTION	COUNTY	TOTAL SHEETS	SHEET NO.	
p:\11\084EBIDINTEG.illinois.gov\PIWIDOT\Documents\IDOT Offices\District 3\Projects\0366\DRAWING\0366F17-sht-details.dgn		CHECKED -	REVISED -			635	(105) I-3	KANKAKEE	6	6	
PLOT SCALE = 100.0000' / 1in.		DATE -	REVISED -			CONTRACT NO. 66F17					
PLOT DATE = 2/26/2016						ILLINOIS FED. AID PROJECT					
SCALE:						SHEET	OF	SHEETS	STA.	TO STA.	