

INDEX OF SHEETS

- 1 COVER SHEET
- 2 GENERAL NOTES
- 3-4 SUMMARY OF QUANTITIES
- 5 TYPICAL SECTION
- 6 SCHEDULE OF QUANTITIES
- 7-8 DETAILS

LIST OF ILLINOIS DOT HIGHWAY STANDARDS

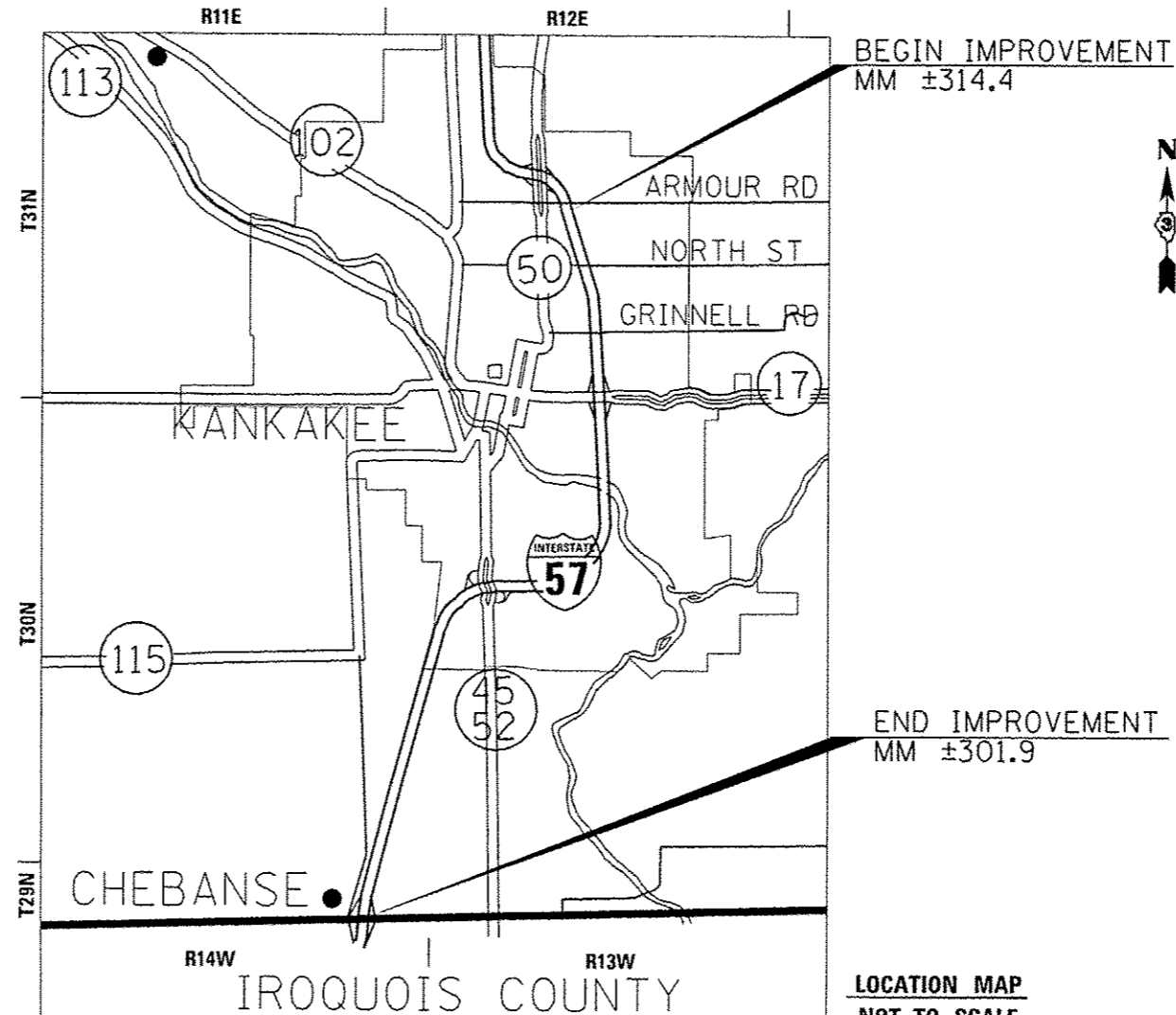
- 000001-06 STANDARD SYMBOLS, ABBREVIATIONS AND PATTERNS
- 701400-08 APPROACH TO LANE CLOSURE, FREEWAY/EXPRESSWAY
- 701401-09 LANE CLOSURE, FREEWAY/EXPRESSWAY
- 701411-09 LANE CLOSURE, MULTILANE, AT ENTRANCE OR EXIT RAMP FOR SPEEDS ≥ 45 MPH
- 701426-08 LANE CLOSURE, MULTILANE INTERMITTENT OR MOVING OPERATION, FOR SPEEDS ≥ 45 MPH
- 701428-01 TRAFFIC CONTROL, SETUP AND REMOVAL, FREEWAY/EXPRESSWAY
- 701901-05 TRAFFIC CONTROL DEVICES
- 781001-04 TYPICAL APPLICATIONS RAISED REFLECTIVE PAVEMENT MARKERS

STATE OF ILLINOIS
DEPARTMENT OF TRANSPORTATION
DIVISION OF HIGHWAYS

PROPOSED
HIGHWAY PLANS

FAI ROUTE 57 (I-57)
SECTION D3 INTERMITTENT RS 2016-1
PROJECT: ACNHPP-0057(310)
INTERMITTENT RESURFACING
KANKAKEE COUNTY

C-93-068-16



GROSS LENGTH & NET LENGTH = 12.5 MILES

J.U.I.E.
 JOINT UTILITY LOCATION INFORMATION FOR EXCAVATION
 1-800-892-0123
 OR 811

PROJECT ENGINEER: DAVE ALEXANDER, P.E.
UNIT CHIEF: BRAD DUNCAN, P.E.
 DISTRICT 3 NO. (815) 434-6131
CONTRACT NO. 66F37

F.A.I. RTE.	SECTION	COUNTY	TOTAL SHEETS	SHEET NO.
57		KANKAKEE	8	1
		ILLINOIS	CONTRACT NO. 66F37	

*03 INTERMITTENT RS 2016-1

D-93-039-16



INTERSTATE (URBAN)
 2015 ADT = 25000
 P.V. = 72.3% S.U. = 4.4% M.U. = 23.3%

STATE OF ILLINOIS
 DEPARTMENT OF TRANSPORTATION

SUBMITTED March 16 2016
Paul Lester REGIONAL ENGINEER

May 6 2016
MARILENE M. ADDIS, P.E.
 ENGINEER OF DESIGN AND ENVIRONMENT

May 6 2016
Paul Lester 2
 DIRECTOR OF PROGRAM DEVELOPMENT

PRINTED BY THE AUTHORITY
OF THE STATE OF ILLINOIS

COMMITMENTS

NO LANE CLOSURES WILL BE ALLOWED FROM AUGUST 17, 2016 TO AUGUST 19, 2016 WHICH COINCIDES WITH COLLEGE MOVE IN DAYS.

GENERAL NOTES

THE THICKNESS OF HMA SHOWN ON THE PLANS IS THE NOMINAL THICKNESS. DEVIATIONS FROM THE NOMINAL THICKNESS WILL BE PERMITTED WHEN SUCH DEVIATIONS OCCUR DUE TO IRREGULARITIES IN THE EXISTING SURFACE OR BASE ON WHICH THE HMA IS PLACED.

THE ENGINEER WILL BE THE SOLE JUDGE CONCERNING CURING TIME FOR THE VARIOUS HMA LIFTS.

ON EXISTING PAVEMENT WHICH MAY BE SUPERELEVATED, THE NEW HMA PAVEMENT SHALL BE BUILT WITH THE SAME SUPERELEVATION UNLESS NEW SUPERELEVATION RATES ARE GIVEN ON THE PLANS.

ANY REFERENCE TO A STANDARD IN THESE PLANS SHALL BE INTERPRETED TO MEAN THE EDITION AS INDICATED BY THE SUBNUMBER SHOWN IN THE LIST OF STANDARDS OR THE COPY INCLUDED IN THESE PLANS.

THE FOLLOWING RATES OF APPLICATION HAVE BEEN USED IN CALCULATING PLAN QUANTITIES:

HMA RESURFACING	112	LBS / SQ YD / IN
SHORT TERM PAVEMENT MARKING	10	FT /100 FT OF APPLICATION
MIX FOR CRACKS, JTS & FLGWYS	0.0003	TONS / SQ YD

STATE OF ILLINOIS
DEPARTMENT OF TRANSPORTATION
DISTRICT THREE
AS BUILT INFORMATION

SUPERVISING CONSTRUCTION FIELD ENGINEER

RESIDENT ENGINEER / TECHNICIAN

START & END DATES
OF CONSTRUCTION:

INSPECTORS:

STATE OF ILLINOIS
DEPARTMENT OF TRANSPORTATION
DISTRICT THREE

PREPARED BY: Tom Benish
DISTRICT STUDIES & PLANS ENGINEER

DATE: March 16, 2016

EXAMINED BY: [Signature]
DISTRICT CONSTRUCTION ENGINEER

Wayne L. Phillips
DISTRICT MATERIALS ENGINEER

[Signature]
DISTRICT OPERATIONS ENGINEER

STATE OF ILLINOIS
DEPARTMENT OF TRANSPORTATION

GENERAL NOTES

F.A.I. RTE.	SECTION	COUNTY	TOTAL SHEETS	SHEET NO.
57		KANKAKEE	8	2
*03 INTERMITTENT RS 2016-1			CONTRACT NO. 66F37	
ILLINOIS FED. AID PROJECT				

FILE NAME *	USER NAME *	DESIGNED -	REVISED -
c:\p\work\p\idat\duncanbhd0470568\03	sf37-shr-co-ver.dgn	DRAWN -	REVISED -
MODEL NAME *	PLOT SCALE : 100,0000 1 / in.	CHECKED -	REVISED -
	PLOT DATE : 3/4/2016	DATE -	REVISED -

SCALE: SHEET OF SHEETS STA. TO STA.

CONSTR. CODE

FEDERAL = 90%
STATE = 10%
ROADWAY
0005
URBAN

CODE NO.	ITEM	UNIT	TOTAL QUANTITY	
40600290	BITUMINOUS MATERIALS (TACK COAT)	POUND	23654	23654
40600400	MIXTURE FOR CRACKS, JOINTS, AND FLANGEWAYS	TON	16	16
40603570	POLYMERIZED HOT-MIX ASPHALT SURFACE COURSE, MIX "E", N90	TON	5887	5887
44000157	HOT-MIX ASPHALT SURFACE REMOVAL, 2"	SO YD	52565	52565
60255500	MANHOLES TO BE ADJUSTED	EACH	3	3
67100100	MOBILIZATION	LSUM	1	1
70100420	TRAFFIC CONTROL AND PROTECTION, STANDARD 701411	EACH	6	6
70106800	CHANGEABLE MESSAGE SIGN	CAL MO	4	4
70300100	SHORT TERM PAVEMENT MARKING	FOOT	4118	4118
70300150	SHORT TERM PAVEMENT MARKING REMOVAL	SO FT	1359	1359
△ 78003130	PREFORMED PLASTIC PAVEMENT MARKING, TYPE B - LINE 6"	FOOT	10300	10300
△ 78008210	POLYUREA PAVEMENT MARKING TYPE I - LINE 4"	FOOT	44880	44880
△ 78008240	POLYUREA PAVEMENT MARKING TYPE I - LINE 8"	FOOT	2000	2000
△ 78100100	RAISED REFLECTIVE PAVEMENT MARKER	EACH	830	830

△ SPECIALTY ITEMS

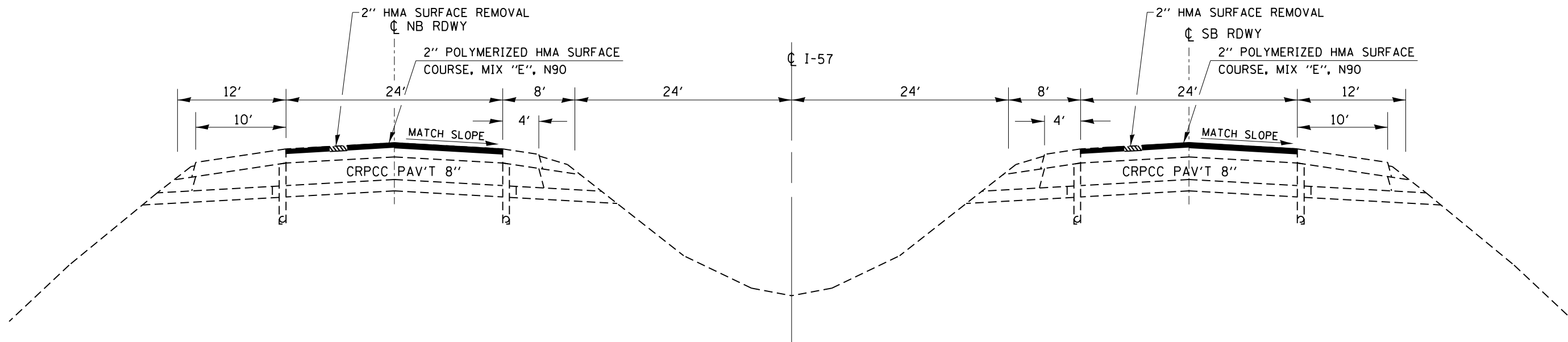
FILE NAME :	USER NAME : duncanbd	DESIGNED -	REVISED -	STATE OF ILLINOIS DEPARTMENT OF TRANSPORTATION	SUMMARY OF QUANTITIES				F.A.I. RTE.	SECTION	COUNTY	TOTAL SHEETS	SHEET NO.
\\ILDB4E8IDINTEG\illinois.gov\PI\DOT\Documents\DOT Offices\District 3\Projects\038\DRAWING\0386F37-shr-500.dgn	PLT SCALE = 100.0000' / 1" / 12	CHECKED -	REVISED -						57	*	KANKAKEE	8	3
Default	PLT DATE = 3/16/2016	DATE -	REVISED -		*03 INTERMITTENT RS 2016-1				CONTRACT NO. 66F37				
					SCALE:	SHEET	OF	SHEETS	STA.	TO STA.	[ILLINOIS] FED. AID PROJECT		

CODE NO.	ITEM	UNIT	TOTAL QUANTITY	CONSTR. CODE
				FEDERAL = 90% STATE = 10% ROADWAY 0005 URBAN
78300200	RAISED REFLECTIVE PAVEMENT MARKER REMOVAL	EACH	830	830
X0326880	MESSAGE BOARD VEHICLE DRIVER	HOURL	160	160
X0326907	PORTABLE, VEHICLE MOUNTED, CHANGEABLE MESSAGE SIGN	CAL MO	2	2
X7010410	SPEED DISPLAY TRAILER	CAL MO	2	2
X7010805	TRAFFIC CONTROL AND PROTECTION, STANDARD 701401 (SPECIAL)	LSUM	1	1
△ X7830070	GROOVING FOR RECESSED PAVEMENT MARKING 5"	FOOT	44880	44880
△ X7830074	GROOVING FOR RECESSED PAVEMENT MARKING 7"	FOOT	10300	10300

△ SPECIALTY ITEMS

7

FILE NAME =	USER NAME = duncanbd	DESIGNED -	REVISED -	STATE OF ILLINOIS DEPARTMENT OF TRANSPORTATION	SUMMARY OF QUANTITIES				F.A.I. RTE.	SECTION	COUNTY	TOTAL SHEETS	SHEET NO.
p:\11\084EBID\INTEG.illinois.gov\PI00T\Documents\1007 Offices\District 3\Projects\0366\DRAWING\0366F37-shr-500.dgn	PLotted	CHECKED -	REVISED -						57	*	KANKAKEE	4	4
Default	PLOT SCALE = 100.0000 1/16"	CHECKED -	REVISED -		*03 INTERMITTENT RS 2016-1				CONTRACT NO. 66F37				
	PLOT DATE = 3/16/2016	DATE -	REVISED -		SCALE:	SHEET	OF	SHEETS	STA.	TO STA.	ILLINOIS FED. AID PROJECT		



NOTE:
WHEN PAVING ONLY ONE LANE EXTEND MILLING & RESURFACING 1' PAST CENTERLINE INTO ADJACENT LANE

TYPICAL SECTION

MIXTURES TABLE

	POLY HMA SURFACE
PG GRADE	SBS-PG70-22
DESIGN AIR VOIDS	4.0% @ N90
MIXTURE COMPOSITION	IL 9.5
FRICTION AGGREGATE	MIXTURE E
DENSITY TEST METHOD	CORES
MIXTURE WEIGHT	112 lb/Sq Yd/In
QUALITY MANAGEMENT PROGRAM	QC/QA
SUBLOT SIZE	N/A
LOCATION(S)	ENTIRE PROJECT

FILE NAME =	USER NAME = duncanbd	DESIGNED -	REVISED -
p:\11\084EBIDINTEG\illinois.gov\PIWIDOT\Documents\IDOT Offices\District 3\Projects\0366\Drawings\0366F37-shr-typical.dgn		REVISION	REVISION
Default	PLOT SCALE = 100.0000' / in.	CHECKED -	REVISED -
	PLOT DATE = 3/16/2016	DATE -	REVISED -

**STATE OF ILLINOIS
DEPARTMENT OF TRANSPORTATION**

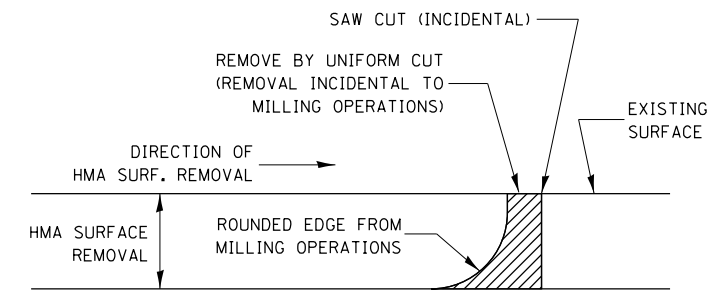
TYPICAL SECTION

SCALE: SHEET OF SHEETS STA. TO STA.

F.A.I. RTE.	SECTION	COUNTY	TOTAL SHEETS	SHEET NO.
57		KANKAKEE	8	5
•D3 INTERMITTENT RS 2016-1			CONTRACT NO. 66F37	
ILLINOIS FED. AID PROJECT				

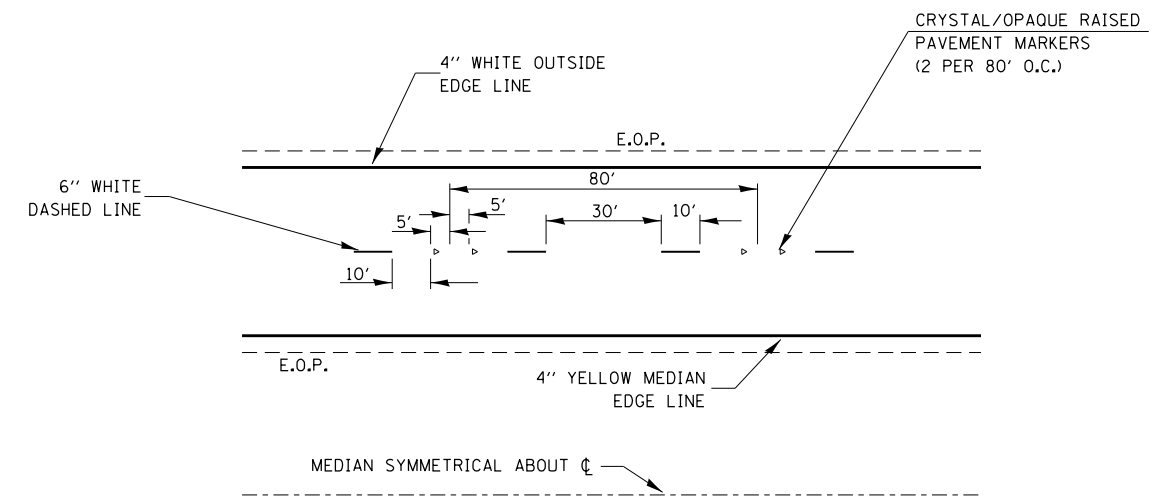
MAINLINE					
LOCATIONS MILE MARKERS	LENGTH	HMA SURF	MIX FOR JTS	BIT MAT	POLY HMA SURF
		REM 2"	CRKS & FLANG	TACK COAT	CSE "E", N90
		SQ YD	TON	POUND	TON
SOUTHBOUND DRIVING LANE					
302.7 - 303.2	2640	3813	1.1	1716	427.1
303.8 - 304.2	2112	3051	0.9	1373	341.7
306.0 - 306.5	2640	3813	1.1	1716	427.1
312.1 - 312.5	2112	2816	0.8	1267	315.4
SOUTHBOUND PASSING LANE					
303.6 - 303.8	1056	1525	0.5	686	170.8
304.1 - 304.3	1056	1525	0.5	686	170.8
304.6 - 305.4	4224	6101	1.8	2746	683.3
312.1 - 312.5	2112	2816	0.8	1267	315.4
NORTHBOUND DRIVING LANE					
302.7 - 303.0	1584	2112	0.6	950	236.5
303.5 - 303.7	1056	1525	0.5	686	170.8
304.1 - 304.4	1584	2288	0.7	1030	256.3
304.6 - 305.0	2112	3051	0.9	1373	341.7
305.1 - 305.6	2640	3813	1.1	1716	427.1
306.7 - 307.1	2112	3051	0.9	1373	341.7
307.4 - 307.7	1584	2288	0.7	1030	256.3
313.3 - 313.6	1584	2288	0.7	1030	256.3
NORTHBOUND PASSING LANE					
302.7 - 303.0	1584	2112	0.6	950	236.5
306.0 - 306.2	1056	1525	0.5	686	170.8
308.8 - 309.0	1056	1525	0.5	686	170.8
313.8 - 313.9	528	763	0.2	343	85.4
314.2 - 314.3	528	763	0.2	343	85.4
TOTALS	36960	52565	16	23654	5887

PAVEMENT MARKING							
LOCATIONS MILE MARKERS	LENGTH	POLYUREA	PREF PLAST	RAISED REFL	RAISED REFL	SHORT TERM	SHORT TERM
		LINE 4"	TY B 6"	PAVT MARK	PAVT MARK REM	PAVT MARK	PAVT MARK REM
		FOOT	FOOT	EACH	EACH	FOOT	SQ FT
SOUTHBOUND DRIVING LANE							
302.7 - 303.2	2640	2640	660	66	66	264	87.1
303.8 - 304.2	2112	2112	530	52	52	211	69.7
306.0 - 306.5	2640	2640	660	66	66	264	87.1
312.1 - 312.5	2112	2112	530	52	52	211	69.7
SOUTHBOUND PASSING LANE							
303.6 - 303.8	1056	1056	260	26	26	106	34.8
304.1 - 304.3	1056	1056	260	26	26	106	34.8
304.6 - 305.4	4224	4224	1060	106	106	422	139.4
312.1 - 312.5	2112	2112					
NORTHBOUND DRIVING LANE							
302.7 - 303.0	1584	1584	400	40	40	158	52.3
303.5 - 303.7	1056	1056	260	26	26	106	34.8
304.1 - 304.4	1584	1584	400	40	40	158	52.3
304.6 - 305.0	2112	2112	530	52	52	211	69.7
305.1 - 305.6	2640	2640	660	66	66	264	87.1
306.7 - 307.1	2112	2112	530	52	52	211	69.7
307.4 - 307.7	1584	1584	400	40	40	158	52.3
313.3 - 313.6	1584	1584	400	40	40	158	52.3
NORTHBOUND PASSING LANE							
302.7 - 303.0	1584	1584					
306.0 - 306.2	1056	1056	260	26	26	106	34.8
308.8 - 309.0	1056	1056	260	26	26	106	34.8
313.8 - 313.9	528	528	130	14	14	53	17.4
314.2 - 314.3	528	528	130	14	14	53	17.4
ADDITIONAL QUANTITY FOR SHORT DISTANCES BETWEEN HMA PATCHES	7920	7920	1980			792	261.4
TOTALS	44880	44880	10300	830	830	4118	1359



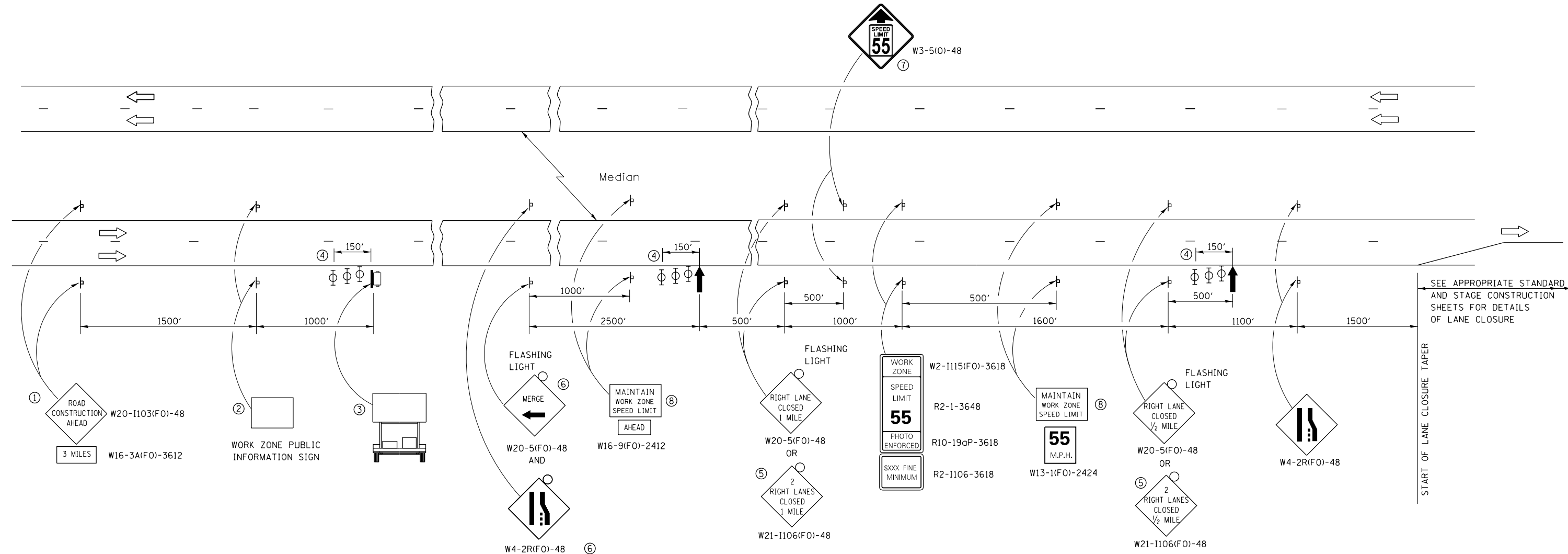
NOTE:
 WHEN MILLING OPERATIONS PRODUCE A ROUNDED EDGE,
 THEN A SAW CUT SHALL BE USED TO MANUFACTURE
 A PERPENDICULAR EDGE AS SHOWN IN THE DETAIL.
 THE ENGINEER SHALL BE THE SOLE JUDGE
 CONCERNING THE USE OF THIS DETAIL

HMA DETAIL AT BUTT JOINTS



TYPICAL PAVEMENT MARKINGS

FILE NAME =	USER NAME = duncanbd	DESIGNED -	REVISED -	STATE OF ILLINOIS DEPARTMENT OF TRANSPORTATION	DETAILS			F.A.I. RTE.	SECTION	COUNTY	TOTAL SHEETS	SHEET NO.
p:\11\084EBIDINTEG.illinois.gov\PIWIDOT\Documents\DOT Offices\District 3\Projects\0366\Drawings\0366F37-shd-details.dgn					57		KANKAKEE	8	7			
Default	PLOT SCALE = 100.0000' / in.	CHECKED -	REVISED -		•D3 INTERMITTENT RS 2016-1			CONTRACT NO. 66F37				
	PLOT DATE = 3/16/2016	DATE -	REVISED -		SCALE:	SHEET OF SHEETS	STA. TO STA.	ILLINOIS FED. AID PROJECT				



- ① THE ROAD CONSTRUCTION AHEAD SIGN SHALL BE LOCATED 3 MILES IN ADVANCE OF THE PROJECT LIMITS.
- ② THE MESSAGE AND SIZE OF THE WORK ZONE PUBLIC INFORMATION SIGN SHALL BE AS SPECIFIED BY THE DEPARTMENT.
- ③ TO BE PLACED IN THE MEDIAN WHEN FEASIBLE. THE MESSAGE BOARD SHALL BE USED TO DISPLAY STATUS OF LANES WITHIN THE PROJECT. THE PRIMARY MESSAGES SHALL BE:
 "RIGHT LANE CLOSED" / " x MILES AHEAD"
 "LEFT LANE CLOSED" / " x MILES AHEAD"
 "ALL LANES OPEN"
- ④ THREE, TYPE II BARRICADES, DRUMS, OR VERTICAL BARRICADES AT 50' CENTERS.
- ⑤ THIS SIGN SHALL BE USED WHEN 2 LANES ARE CLOSED.
- ⑥ WHEN THE LEFT LANE IS CLOSED, SWITCH THESE TWO SIGNS AND THE DIRECTION OF THE MERGE ARROW.
- ⑦ THIS SIGN SHALL ONLY BE USED IF THE EXISTING SPEED LIMIT IS GREATER THAN 65 MPH.

⑧ 48"x36" FLUORESCENT ORANGE SIGN WITH BLACK LETTERS.
48"

MAINTAIN	8"
WORK ZONE	6"
SPEED LIMIT	6"

- ↑ ARROW BOARD
- ☐ PORTABLE CHANGEABLE MESSAGE SIGN
- ⊥ SIGN
- ⊕ TYPE II BARRICADE, DRUM, OR VERTICAL BARRICADE WITH MONODIRECTIONAL FLASHING LIGHT

GENERAL NOTE:

THIS STANDARD IS USED WHERE AT ANY TIME A LANE IS CLOSED ON A FREEWAY/EXPRESSWAY.

WHEN THE LEFT LANE IS CLOSED, LEFT LANE CLOSED SIGNS SHALL BE SUBSTITUTED FOR THE RIGHT LANE CLOSED SIGNS.

THE FIRST TWO SIGNS AND THE MESSAGE BOARD ARE STATIONARY. THE OTHER SIGNS AND ARROWBOARDS SHALL BE MOVED AS NECESSARY TO MAINTAIN THE REQUIRED DISTANCE FROM THE START OF THE LANE CLOSURE TAPER(S).

SEE SPECIAL PROVISIONS.

ALL DIMENSIONS ARE IN INCHES UNLESS OTHERWISE SHOWN.

FILE NAME =	USER NAME = duncanbd	DESIGNED -	REVISED -	STATE OF ILLINOIS DEPARTMENT OF TRANSPORTATION	STANDARD 701400 (SPECIAL)	F.A.I. RTE.	SECTION	COUNTY	TOTAL SHEETS	SHEET NO.
pw\1\084EBIDINTEG.illinois.gov\PI\DOT\Documents\IDOT Offices\District 3\Projects\0366\Drawings\0366\Final\0366F37-shd-details.dgn		CHECKED -	REVISED -			57	.	KANKAKEE	8	8
PLOT SCALE = 100.0000' / in.		DATE -	REVISED -			•D3 INTERMITTENT RS 2016-1		CONTRACT NO. 66F37		
PLOT DATE = 3/16/2016						FED. ROAD DIST. NO.	ILLINOIS	FED. AID PROJECT		