

STATE OF ILLINOIS  
DEPARTMENT OF TRANSPORTATION  
DIVISION OF HIGHWAYS

**PROPOSED  
HIGHWAY PLANS**

VARIOUS ROUTES  
SECTION RRPM 2016-1  
PROJECT : ACHSIP-000V (056)  
RAISED REFLECTIVE PAVEMENT MARKERS  
VARIOUS COUNTIES

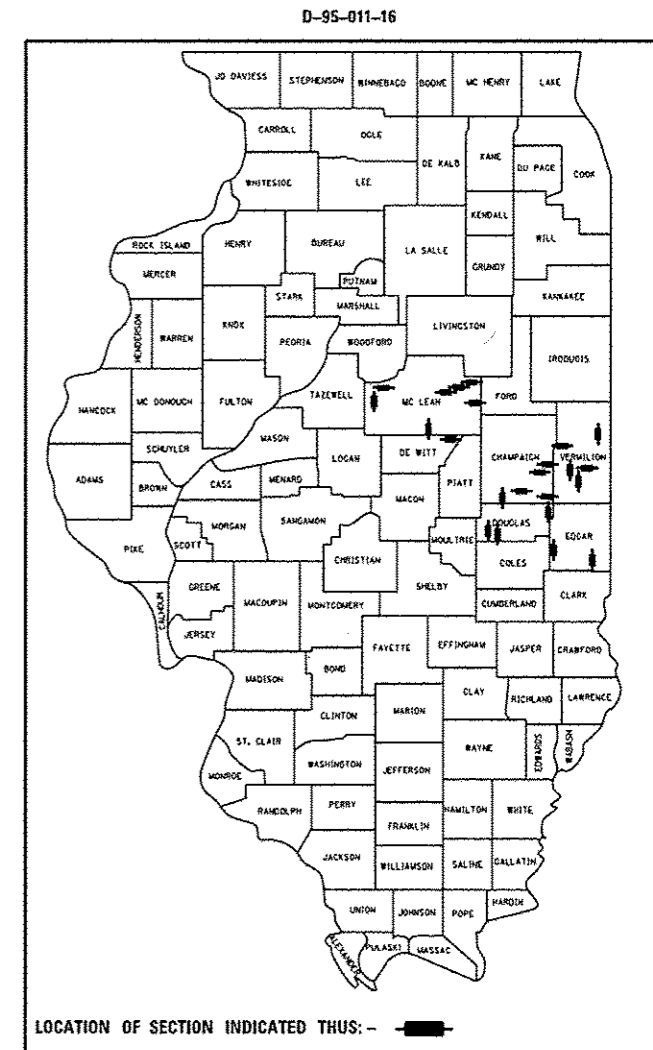
C-95-011-16

| F.A.P. RTE. | SECTION     | COUNTY   | TOTAL SHEETS       | SHEET NO. |
|-------------|-------------|----------|--------------------|-----------|
| *           | RRPM 2016-1 | VARIOUS  | 8                  | 1         |
|             |             | ILLINOIS | CONTRACT NO. 70B73 |           |

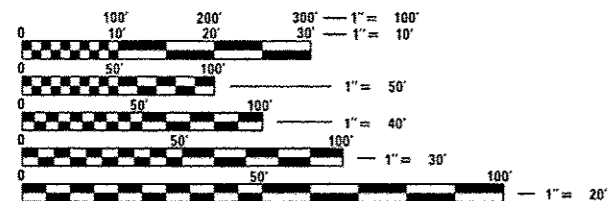
\* VARIOUS ROUTES

FOR INDEX OF SHEETS, SEE SHEET NO. 5  
FOR SUMMARY OF QUANTITIES, SEE SHEET NO. 6

DESIGN DESIGNATION  
N/A



FOR LOCATION MAP, SEE SHEET NO. 2-4



FULL SIZE PLANS HAVE BEEN PREPARED USING STANDARD ENGINEERING SCALES. REDUCED SIZED PLANS WILL NOT CONFORM TO STANDARD SCALES. IN MAKING MEASUREMENTS ON REDUCED PLANS, THE ABOVE SCALES MAY BE USED.

J.U.L.I.E.  
JOINT UTILITY LOCATION INFORMATION FOR EXCAVATION  
1-800-892-0123  
OR 811

PROJECT ENGINEER: NANCY FASIG  
SQUAD LEADER: BRIAN J. HOGAN  
DESIGNER: AMBER WEST  
(217) 465-4181  
CONTRACT NO. 70B73

GROSS LENGTH = 50,933.76 FT. = 9.647 MILE  
NET LENGTH = 50,933.76 FT. = 9.647 MILE

STATE OF ILLINOIS  
DEPARTMENT OF TRANSPORTATION  
DIVISION OF HIGHWAYS

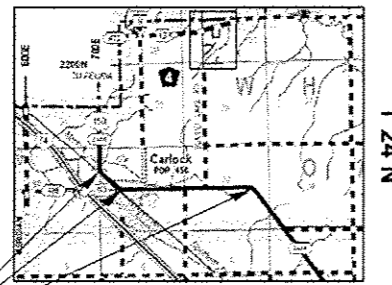
SUBMITTED MARCH 18 20 16  
Kenneth A. Gammitt  
REGION THREE ENGINEER

Maureen M. Addis P.E. B.S.  
ENGINEER OF DESIGN AND ENVIRONMENT

May 6 20 16  
Onor Osman P.E. B.S.  
DIRECTOR OF HIGHWAYS, CHIEF ENGINEER

PRINTED BY THE AUTHORITY  
OF THE STATE OF ILLINOIS

# LOCATION MAP MCLEAN COUNTY



R 1 E

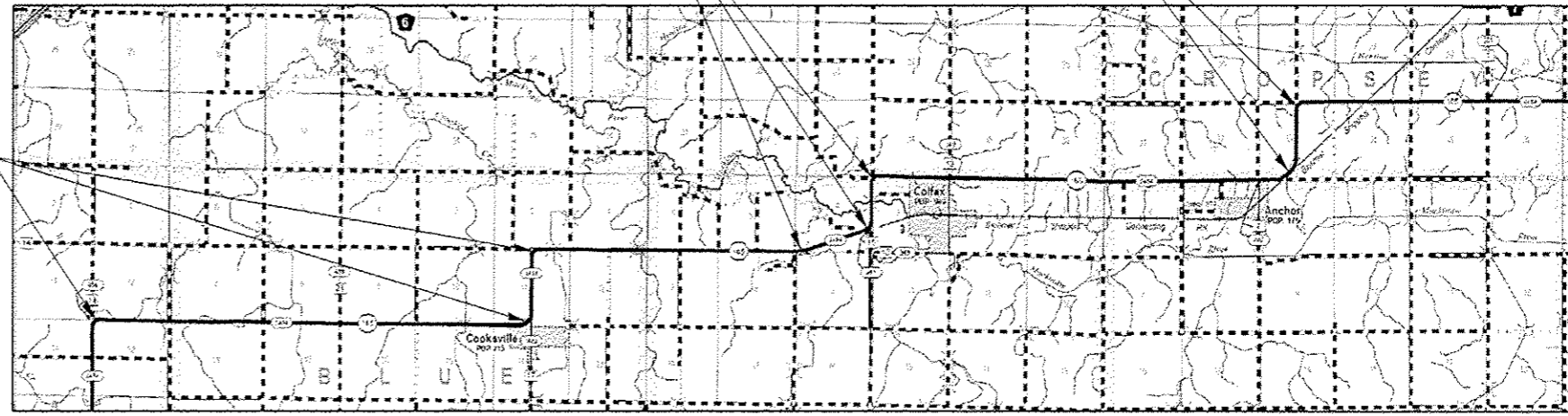
T 24 N

**US 150**  
281+96.40 - 287+59.81  
300+89.81 - 303+61.67  
382+16.01 - 388+26.11

**IL 165**  
207+55.83 - 215+26.10  
509+19.90 - 521+81.59  
565+37.58 - 573+36.27

**IL 165**  
752+84.31 - 762+75.83  
803+34.15 - 812+18.51  
839+72.21 - 847+59.00

**IL 165**  
1113+23.94 - 1136+23.60  
1170+87.26 - 1178+76.90



R 3 E

R 4 E

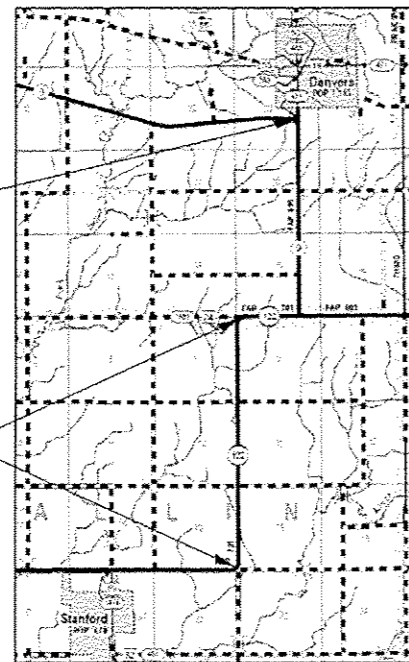
R 5 E

R 6 E

T 25 N

T 24 N

**IL 9**  
21+15.00 - 28+97.00

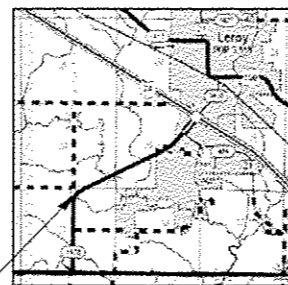


R 1 W

T 24 N

T 23 N

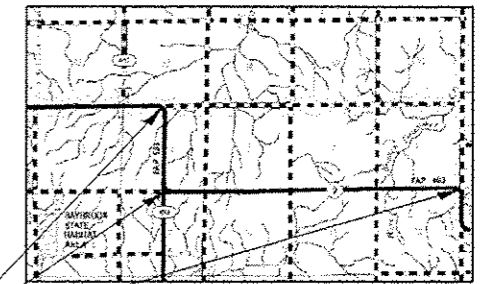
**IL 122**  
342+80.50 - 350+73.32  
500+64.24 - 508+46.85



R 4 E

T 22 N

**HWY 942**  
52+85.35 - 64+06.90



R 6 E

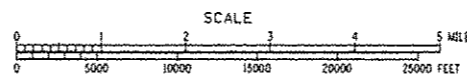
T 24 N

T 23 N

**IL 9**  
1035+68.83 - 1043+51.88  
1222+11.17 - 1230+02.95  
1277+10.11 - 1284+92.61

## MCLEAN COUNTY LOCATIONS

GROSS LENGTH = 15,864.30' = 3.005 MILES  
NET LENGTH = 15,864.30' = 3.005 MILES

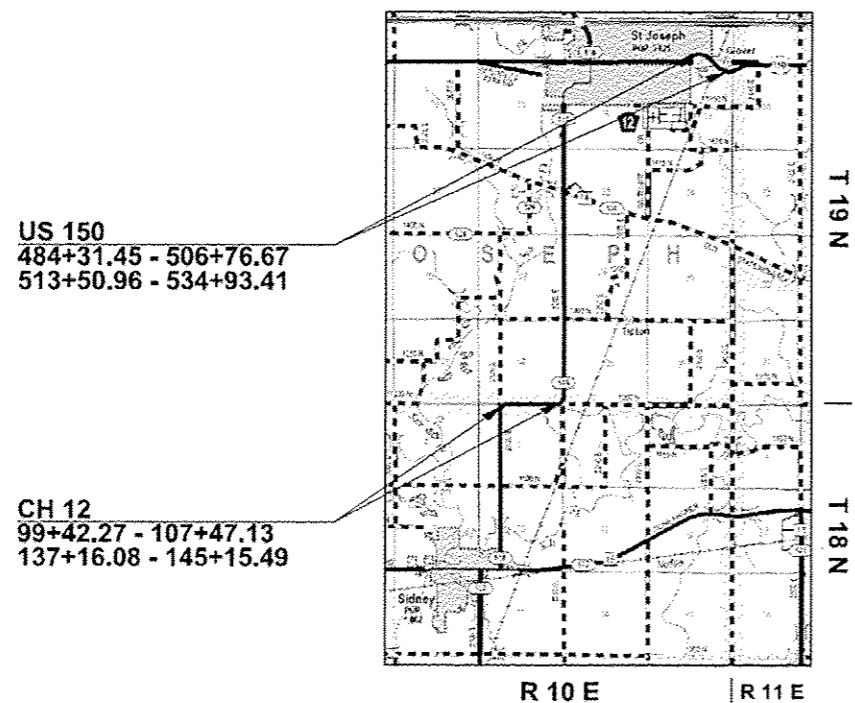


|  |                             |  |           |                                     |   |               |             |         |              |                           |
|--|-----------------------------|--|-----------|-------------------------------------|---|---------------|-------------|---------|--------------|---------------------------|
| FILE NAME =  | USER NAME = hogenbj         | DESIGNED -                             | REVISED - | <b>STATE OF ILLINOIS</b>            | <b>LOCATION MAP</b>                     | F.A.P. RTE. = | SECTION     | COUNTY  | TOTAL SHEETS | SHEET NO.                 |
| p:\11188*EBI\INTEG.allinois.gov\WIDOT\Documents\DOT Offices\District 5\Projects\097\DRM\0Data\Design\0578973 - Cover Sheet |                             | DRM\0Data\Design\0578973 - Cover Sheet | REVISED - | <b>DEPARTMENT OF TRANSPORTATION</b> |   | *             | BRPM 2016-1 | VARIOUS | 8            | 2                         |
| MODELNAME#   | PLOT SCALE = 48.0000 "/ in. | CHECKED -                              | REVISED - |                                     | SCALE: SHEET 1 OF 3 SHEETS STA. TO STA. |               |             |         |              | CONTRACT NO. 70873        |
|  | PLOT DATE = 1/26/2016       | DATE -                                 | REVISED - |                                     |   |               |             |         |              | ILLINOIS FED. AID PROJECT |

\* VARIOUS ROUTES

# LOCATION MAP

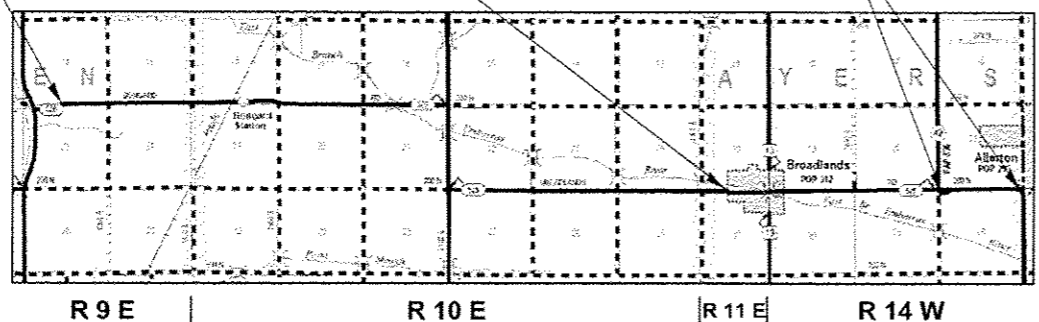
## CHAMPAIGN COUNTY



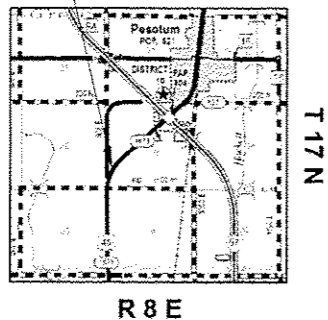
**BONGARD ROAD**  
64+64.92 - 73+10.20

**BROADLANDS ROAD**  
169+08.04 - 174+26.27

**IL 49**  
421+46.50 - 429+32.00  
466+70.70 - 479+57.40

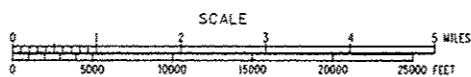


**US 45**  
1088+24.41 - 1112+59.00



### CHAMPAIGN COUNTY LOCATIONS

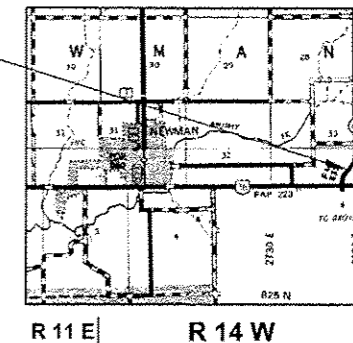
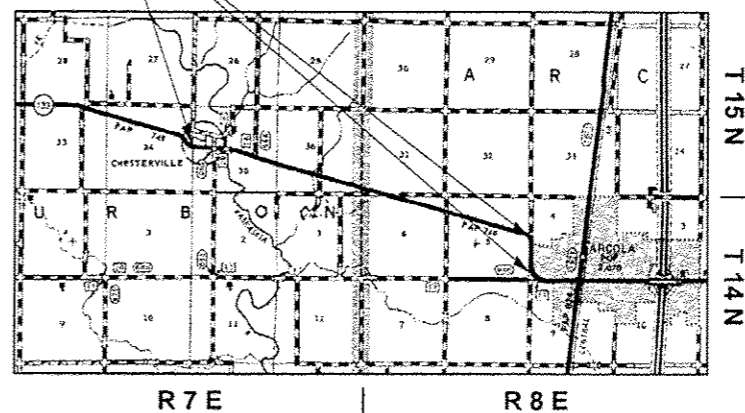
GROSS LENGTH = 11,862.24' = 2.247 MILES  
NET LENGTH = 11,862.24' = 2.247 MILES



## DOUGLAS COUNTY

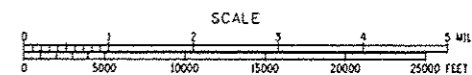
**IL 133**  
210+24.82 - 228+39.95  
437+11.22 - 445+16.20  
460+72.16 - 476+61.84

**IL 49**  
2+00.00 - 22+20.20



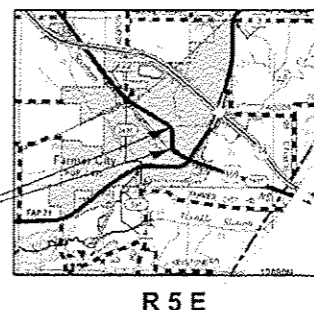
### DOUGLAS COUNTY LOCATIONS

GROSS LENGTH = 6,229.99' = 1.180 MILES  
NET LENGTH = 6,229.99' = 1.180 MILES



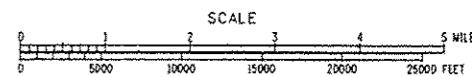
## DEWITT COUNTY

**US 150**  
78+74.50 - 82+13.60  
91+40.00 - 96+95.70



### DEWITT COUNTY LOCATIONS

GROSS LENGTH = 894.80' = 0.169 MILES  
NET LENGTH = 894.80' = 0.169 MILES

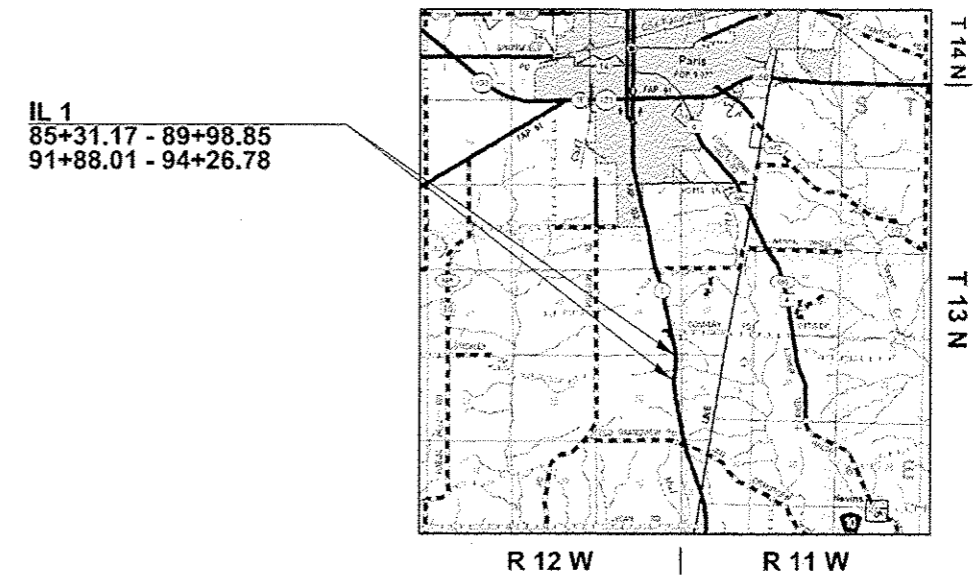
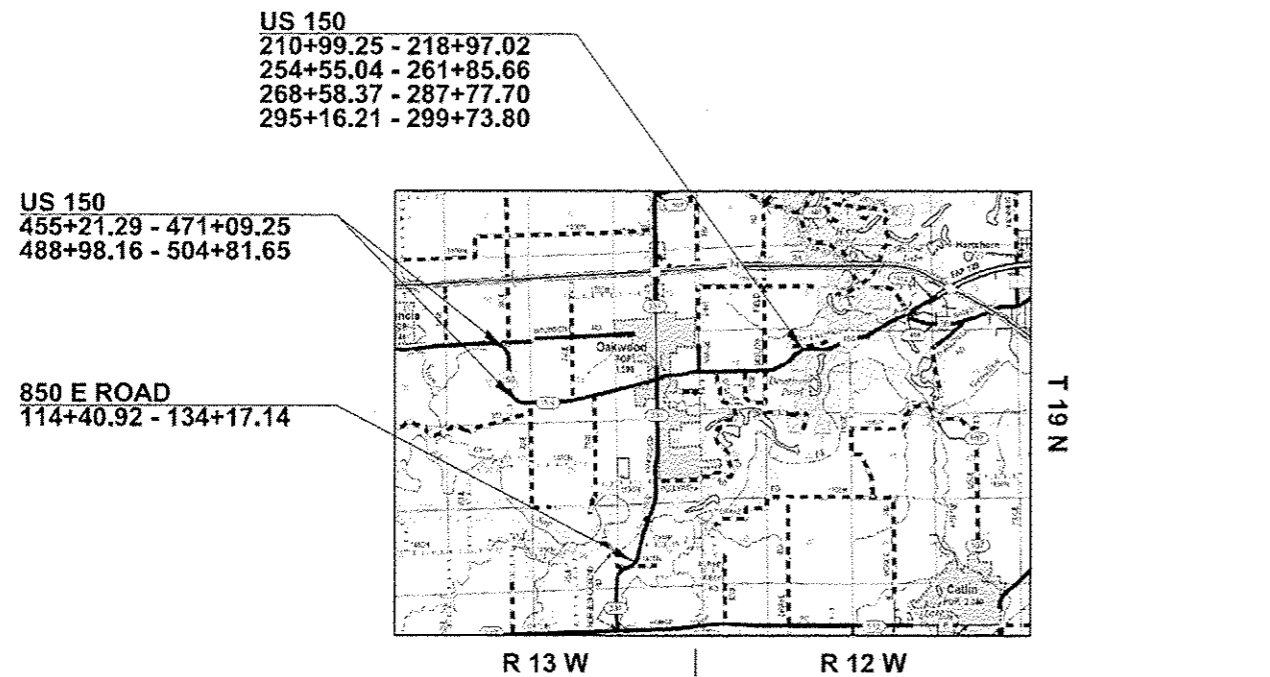
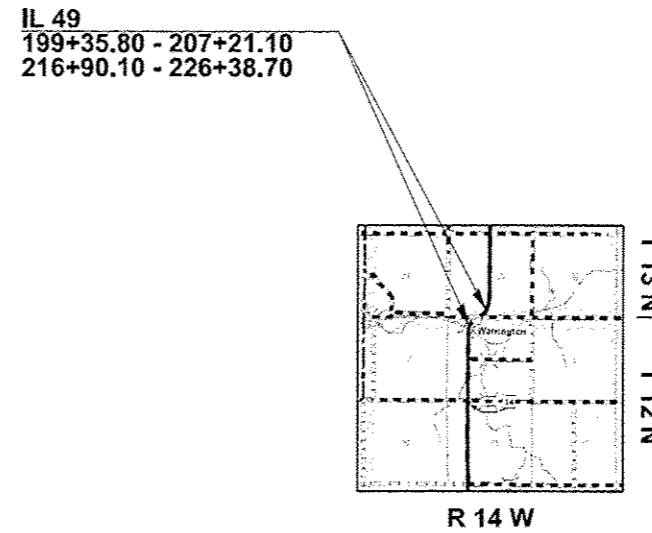
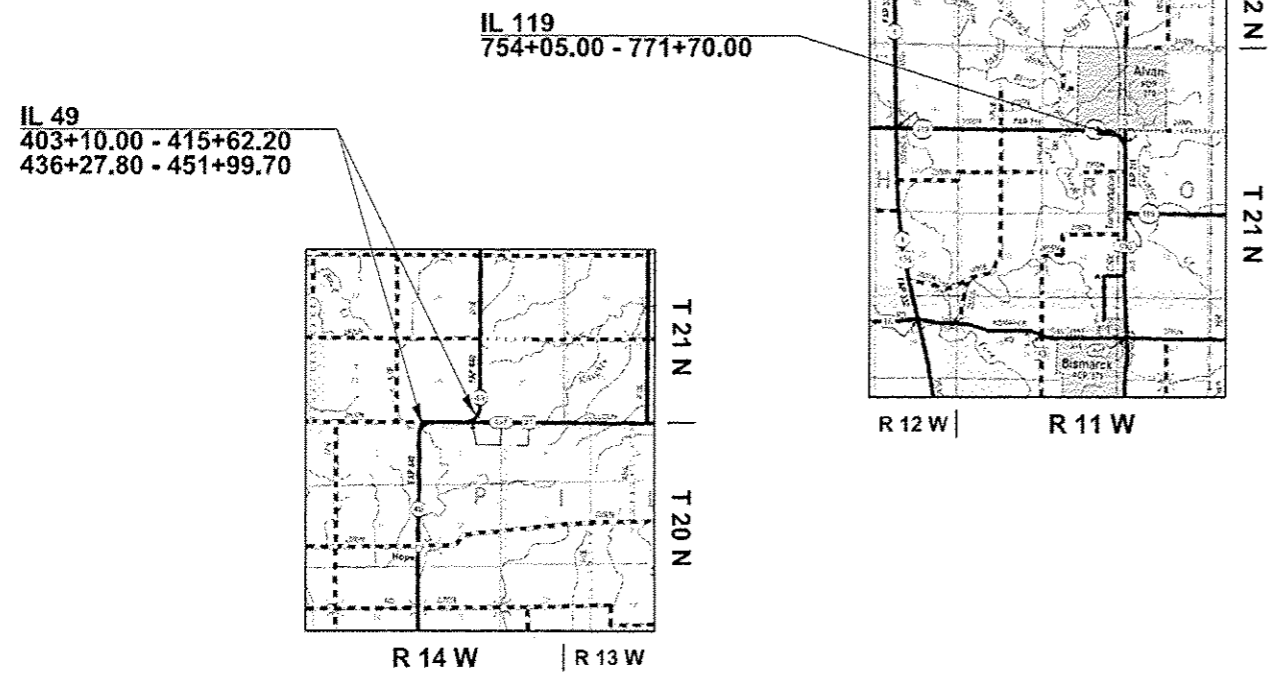


|  |  |            |           |                                     |   |             |             |         |              |           |
|--|--|------------|-----------|-------------------------------------|---|-------------|-------------|---------|--------------|-----------|
| FILE NAME =  | USER NAME = hoganoj  | DESIGNED - | REVISED - | <b>STATE OF ILLINOIS</b>            | <b>LOCATION MAP</b>                     | F.A.P. RTE. | SECTION     | COUNTY  | TOTAL SHEETS | SHEET NO. |
| p:\N\18046610\INTE00\illinois.gov\PI00T\Documents\DOT Offices\District 5\Projects\0575\DRANNOData\Design\0575073 - Cover Sheet |  |            |           | <b>DEPARTMENT OF TRANSPORTATION</b> | SCALE: SHEET 2 OF 3 SHEETS STA. TO STA. | *           | RRPM 2016-1 | VARIOUS | 8            | 3         |
| #MODELNAME#  | PLOT SCALE = 48.0000 "/> <td>DATE</td> <td>REVISED -</td> <td colspan="7" style="text-align: right;">CONTRACT NO. 70B73</td> | DATE       | REVISED - | CONTRACT NO. 70B73                  |   |             |             |         |              |           |
| ILLINOIS FED. AID PROJECT  |  |            |           |                                     |   |             |             |         |              |           |

# LOCATION MAP

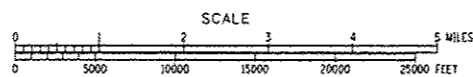
## VERMILION COUNTY

## EDGAR COUNTY



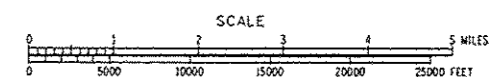
### VERMILION COUNTY LOCATIONS

GROSS LENGTH = 13,642.08' = 2.584 MILES  
NET LENGTH = 13,642.08' = 2.584 MILES



### EDGAR COUNTY LOCATIONS

GROSS LENGTH = 2,440.35' = 0.462 MILES  
NET LENGTH = 2,440.35' = 0.462 MILES



|  |                             |            |           |   |              |                    |             |         |              |           |
|--|-----------------------------|------------|-----------|---|--------------|--------------------|-------------|---------|--------------|-----------|
| FILE NAME #<br>p:\1\1884\EGID\TEG\Illinois\gov\PI007\Documents\DOT Offices\District 5\Projects\057EDRAM\057EDRAM\Design\DS7873 - Cover Sheet | USER NAME # hogenb          | DESIGNED - | REVISED - | STATE OF ILLINOIS<br>DEPARTMENT OF TRANSPORTATION | LOCATION MAP | F.A.P. RTE.        | SECTION     | COUNTY  | TOTAL SHEETS | SHEET NO. |
|  | PLOT SCALE = 40.0000" / in. | CHECKED -  | REVISED - |   |              | •                  | RRPM 2016-1 | VARIOUS | 8            | 4         |
|  | PLOT DATE = 1/27/2016       | DATE       | REVISED   |   |              | CONTRACT NO. 70873 |             |         |              |           |

SCALE: SHEET 3 OF 3 SHEETS STA. TO STA. ILLINOIS FED. AID PROJECT

## INDEX OF SHEETS

| SHEET NO. | DESCRIPTION                              |
|-----------|--|
| 1         | COVER SHEET                              |
| 2-4       | LOCATION MAP                             |
| 5         | INDEX OF SHEETS                          |
| 5         | HIGHWAY STANDARDS                        |
| 5         | GENERAL NOTES                            |
| 6         | SUMMARY OF QUANTITIES                    |
| 7         | SCHEDULE OF QUANTITIES                   |
| 8         | RAISED REFLECTIVE PAVEMENT MARKER DETAIL |

## GENERAL NOTES

G.N.-100  
ENGLISH UNITS OF MEASUREMENT SHALL GOVERN OVER AND SUPERSEDE ANY METRIC UNITS SHOWN IN THIS CONTRACT. WHERE INCLUDED, METRIC UNITS ARE FOR INFORMATION ONLY.

G.N.-100A  
ELECTRONIC FILES AND/OR ELECTRONIC SURVEY INFORMATION INCLUDING CADD FILES WILL NOT BE AVAILABLE TO THE CONTRACTOR.

G.N.-781  
RAISED REFLECTIVE PAVEMENT MARKERS SHALL BE PLACED IN ACCORDANCE WITH STANDARD 781001, AND THE DETAILS SHOWN IN THE PLANS. IF THERE IS ANY DISCREPANCY BETWEEN THE STANDARD AND THE DETAILS IN THE PLANS, THE DETAILS IN THE PLANS SHALL GOVERN. THE FINAL PAVEMENT MARKINGS SHALL BE IN PLACE PRIOR TO PLACING THE RAISED REFLECTIVE PAVEMENT MARKERS AND THE RAISED REFLECTIVE PAVEMENT MARKERS SHALL BE PLACED MIDWAY IN THE 30 FOOT (9 m) SPACE BETWEEN THE DASHED CENTERLINE STRIPES (WHEN APPLICABLE).

NO COMMITMENTS

## HIGHWAY STANDARDS

| STANDARD NO. | DESCRIPTION   |
|--------------|---|
| 000001-06    | STANDARD SYMBOLS, ABBREVIATIONS, AND PATTERNS                                   |
| 001006       | DECIMAL OF AN INCH AND OF A FOOT  |
| 701301-04    | LANE CLOSURE, 2L, 2W, SHORT TIME OPERATIONS                                     |
| 701306-03    | LANE CLOSURE, 2L, 2W, SLOW MOVING OPERATIONS DAY ONLY, FOR SPEEDS $\geq$ 45 MPH |
| 701901-05    | TRAFFIC CONTROL DEVICES   |
| 781001-04    | TYPICAL APPLICATIONS RAISED REFLECTIVE PAVEMENT MARKERS                         |

• VARIOUS ROUTES

|  |                              |            |           |   |   |                           |             |         |              |           |
|--|------------------------------|------------|-----------|---|---|---------------------------|-------------|---------|--------------|-----------|
| FILE NAME =  | USER NAME = hagenaj          | DESIGNED - | REVISED - | <b>STATE OF ILLINOIS<br/>DEPARTMENT OF TRANSPORTATION</b> | <b>INDEX OF SHEETS, GENERAL NOTES<br/>&amp; HIGHWAY STANDARDS</b> | F.A.P.<br>RTE.            | SECTION     | COUNTY  | TOTAL SHEETS | SHEET NO. |
| p:\2016\0646810\INTEG\Illinois.gov\PI001\0646810\DOT\Office\District 5\Projects\0578\Drawings\Design\0578R73 - GENNOTE.dgn | PLOT SCALE = 40,0000' / 1" = | DRAWN      | REVISED   | SCALE:  | SHEET 1 OF 1 SHEETS   | VARIOUS                   | RRPM 2016-1 | VARIOUS | 9            | 5         |
| *MODELNAME*  | PLOT DATE = 1/28/2016        | CHECKED -  | REVISED - | STA.  | TO STA.   | ILLINOIS FED. AID PROJECT |             |         |              |           |
|  |                              |            |           |   |   | CONTRACT NO. 70B73        |             |         |              |           |



# SCHEDULE OF QUANTITIES

## RAISED REFLECTIVE PAVEMENT MARKERS

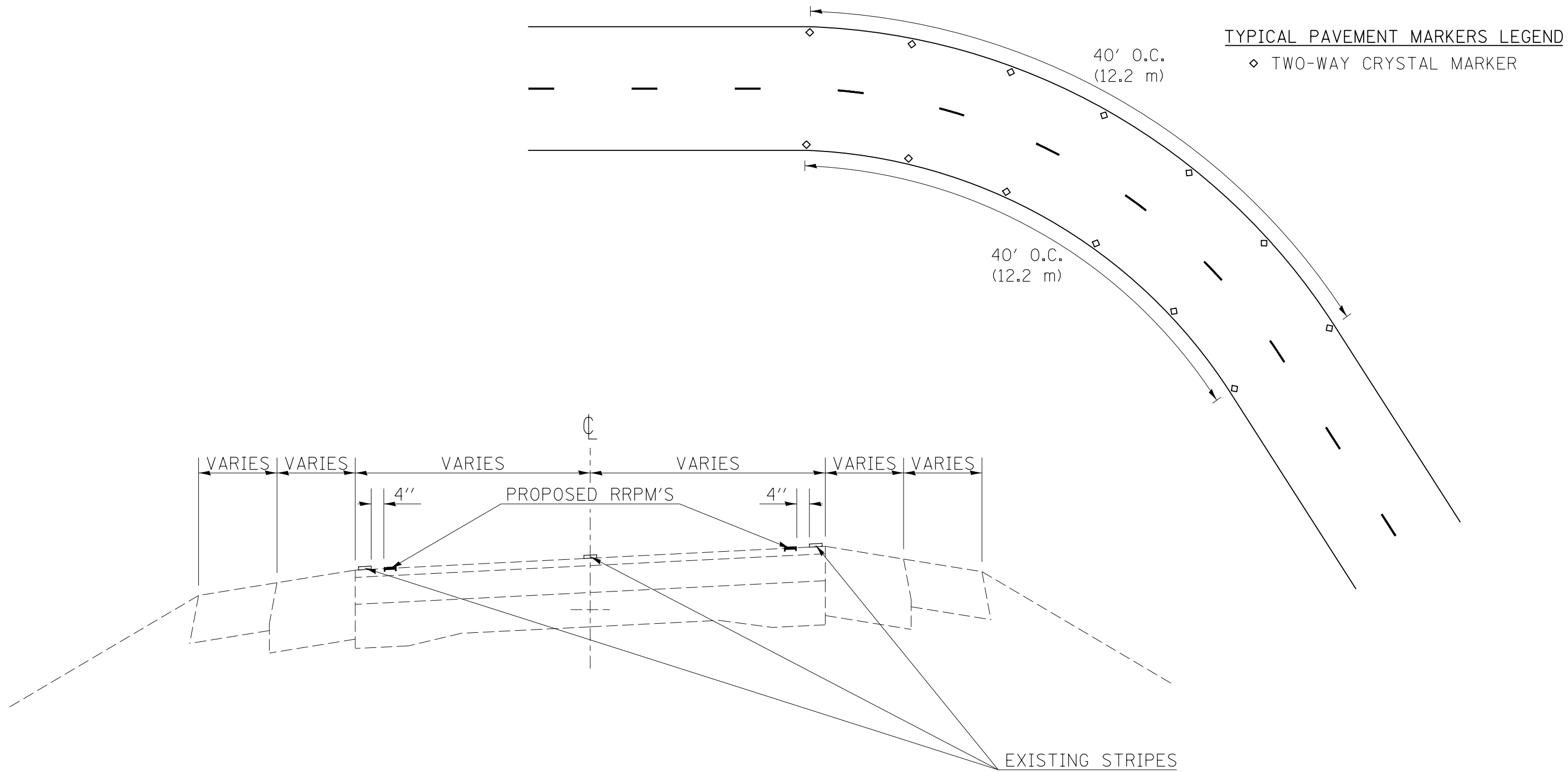
| LOCATION               | DESCRIPTION                      | STATION    | TO | STATION    | LENGTH (FOOT) | RAISED REFLECTIVE PAVEMENT MARKER 78100100 (EACH) |
|------------------------|----------------------------------|------------|----|------------|---------------|---|
| CHAMPAIGN COUNTY RURAL |                                  |            |    |            |               |   |
| CR 300 N @ IL 130      | Bongard Rd                       | 64+64.92   |    | 68+38.32   | 373.40        | 18.0  |
| CR 300 N @ IL 130      |                                  | 68+38.32   |    | 69+36.73   | 98.41         | 4.0   |
| CR 300 N @ IL 130      |                                  | 69+36.73   |    | 73+10.20   | 373.47        | 18.0  |
| Broadlands Rd          | Broadlands                       | 169+08.04  |    | 171+73.57  | 265.53        | 14.0  |
| Broadlands Rd          |                                  | 171+73.57  |    | 172+52.40  | 78.83         | 4.0   |
| Broadlands Rd          |                                  | 172+52.40  |    | 174+26.27  | 173.87        | 8.0   |
| US 45                  | South of Pesotum                 | 1088+24.41 |    | 1112+59.00 | 2,434.59      | 122.0   |
| CH 12                  | North of Sidney                  | 99+42.27   |    | 107+47.13  | 804.86        | 40.0  |
| CH 12                  |                                  | 137+16.08  |    | 145+15.49  | 799.41        | 40.0  |
| US 150                 | East of St Joe @ Glover Overhead | 513+50.96  |    | 526+73.31  | 1,322.35      | 66.0  |
| US 150                 |                                  | 526+73.31  |    | 529+71.34  | 298.03        | 14.0  |
| US 150                 |                                  | 529+71.34  |    | 534+93.41  | 522.07        | 26.0  |
| IL 49                  | Allerton                         | 421+46.50  |    | 429+32.00  | 785.50        | 40.0  |
| IL 49                  |                                  | 466+70.70  |    | 471+21.50  | 450.80        | 22.0  |
| IL 49                  |                                  | 471+21.50  |    | 473+50.80  | 229.30        | 12.0  |
| IL 49                  |                                  | 473+50.80  |    | 479+57.40  | 606.60        | 30.0  |
| CHAMPAIGN COUNTY URBAN |                                  |            |    |            |               |   |
| US 150                 | East of St Joe @ Glover Overhead | 484+31.45  |    | 490+19.31  | 587.86        | 30.0  |
| US 150                 |                                  | 490+19.31  |    | 493+32.12  | 312.81        | 16.0  |
| US 150                 |                                  | 493+32.12  |    | 506+76.67  | 1,344.55      | 68.0  |
| DEWITT COUNTY RURAL    |                                  |            |    |            |               |   |
| US 150                 | Farmer City                      | 78+74.50   |    | 82+13.60   | 339.10        | 16.0  |
| US 150                 |                                  | 91+40.00   |    | 96+95.70   | 555.70        | 28.0  |
| DOUGLAS COUNTY RURAL   |                                  |            |    |            |               |   |
| IL 49                  | Just North of US 36              | 2+00.00    |    | 9+67.10    | 767.10        | 38.0  |
| IL 49                  |                                  | 9+67.10    |    | 14+52.40   | 485.30        | 24.0  |
| IL 49                  |                                  | 14+52.40   |    | 22+20.20   | 767.80        | 38.0  |
| IL 133                 | Chesterville                     | 210+24.82  |    | 219+69.20  | 944.38        | 48.0  |
| IL 133                 |                                  | 219+69.20  |    | 220+99.11  | 129.91        | 6.0   |
| IL 133                 |                                  | 220+99.11  |    | 228+39.95  | 740.84        | 38.0  |
| IL 133                 | Arcola                           | 437+11.22  |    | 445+16.20  | 804.98        | 40.0  |
| IL 133                 |                                  | 460+72.16  |    | 476+61.84  | 1,589.68      | 80.0  |
| CHAMPAIGN COUNTY RURAL |                                  |            |    |            | TOTAL:        | 478.0   |
| CHAMPAIGN COUNTY RURAL |                                  |            |    |            | ROUNDED:      | 480.0   |
| CHAMPAIGN COUNTY URBAN |                                  |            |    |            | TOTAL:        | 114.0   |
| CHAMPAIGN COUNTY URBAN |                                  |            |    |            | ROUNDED:      | 120.0   |
| DEWITT COUNTY RURAL    |                                  |            |    |            | TOTAL:        | 44.0  |
| DEWITT COUNTY RURAL    |                                  |            |    |            | ROUNDED:      | 50.0  |
| DOUGLAS COUNTY RURAL   |                                  |            |    |            | TOTAL:        | 312.0   |
| DOUGLAS COUNTY RURAL   |                                  |            |    |            | ROUNDED:      | 320.0   |

|                        |                 |                |
|------------------------|-----------------|----------------|
| CHAMPAIGN COUNTY RURAL | ROUNDED:        | 480.0          |
| CHAMPAIGN COUNTY URBAN | ROUNDED:        | 120.0          |
| DEWITT COUNTY RURAL    | ROUNDED:        | 50.0           |
| DOUGLAS COUNTY RURAL   | ROUNDED:        | 320.0          |
| EDGAR COUNTY RURAL     | ROUNDED:        | 130.0          |
| MCLEAN COUNTY RURAL    | ROUNDED:        | 800.0          |
| VERMILION COUNTY RURAL | ROUNDED:        | 690.0          |
| <b>GRAND TOTAL</b>     | <b>ROUNDED:</b> | <b>2,590.0</b> |

| LOCATION               | DESCRIPTION                       | STATION    | TO | STATION    | LENGTH (FOOT) | RAISED REFLECTIVE PAVEMENT MARKER 78100100 (EACH) |
|------------------------|-----------------------------------|------------|----|------------|---------------|---|
| EDGAR COUNTY RURAL     |                                   |            |    |            |               |   |
| IL 49                  | North of Kansas                   | 199+35.80  |    | 207+21.10  | 785.30        | 40.0  |
| IL 49                  |                                   | 216+90.10  |    | 226+38.70  | 948.60        | 48.0  |
| IL 1                   | South of 600 N                    | 85+31.17   |    | 89+98.85   | 467.68        | 24.0  |
| IL 1                   |                                   | 91+88.01   |    | 94+26.78   | 238.77        | 12.0  |
| MCLEAN COUNTY RURAL    |                                   |            |    |            |               |   |
| HWY 942                | South of Leroy                    | 52+85.35   |    | 64+06.90   | 1,121.55      | 56.0  |
| IL 9                   | Farther North of Saybrook         | 1277+10.11 |    | 1284+92.61 | 782.50        | 40.0  |
| IL 9                   | North of Saybrook                 | 1222+11.17 |    | 1230+02.95 | 791.78        | 40.0  |
| IL 9                   | At Ford County Line               | 1035+68.83 |    | 1043+51.88 | 783.05        | 40.0  |
| IL 165                 | West of Cooksville @ 2300 E       | 207+55.83  |    | 215+26.10  | 770.27        | 38.0  |
| IL 165                 | Cooksville                        | 509+19.90  |    | 521+81.59  | 1,261.69      | 64.0  |
| IL 165                 | North of Cooksville @ 1900 N      | 565+37.58  |    | 573+36.27  | 798.69        | 40.0  |
| IL 165                 | West of Colfax @ 3300 E           | 752+84.31  |    | 762+75.83  | 991.52        | 50.0  |
| IL 165                 |                                   | 803+34.15  |    | 812+18.51  | 884.36        | 44.0  |
| IL 165                 | Colfax @ 3300E/2000N              | 839+72.21  |    | 847+59.00  | 786.79        | 40.0  |
| IL 165                 | Anchor                            | 1113+23.94 |    | 1136+23.60 | 2,299.66      | 114.0   |
| IL 165                 | North of Anchor @ 2100N/3850E     | 1170+87.26 |    | 1178+76.90 | 789.64        | 40.0  |
| IL 9                   | Danvers                           | 21+15.00   |    | 28+97.00   | 782.00        | 40.0  |
| IL 122                 | East of Stanford                  | 342+80.50  |    | 350+73.32  | 792.82        | 40.0  |
| IL 122                 | North of Stanford @ 1400 N        | 500+64.24  |    | 508+46.85  | 782.61        | 40.0  |
| US 150                 | Carlock                           | 281+96.40  |    | 287+59.81  | 563.41        | 28.0  |
| US 150                 |                                   | 300+89.81  |    | 303+61.67  | 271.86        | 14.0  |
| US 150                 |                                   | 382+16.01  |    | 388+26.11  | 610.10        | 30.0  |
| VERMILION COUNTY RURAL |                                   |            |    |            |               |   |
| IL 119                 | Alvin                             | 754+05.00  |    | 762+11.80  | 806.80        | 40.0  |
| IL 119                 |                                   | 762+11.80  |    | 765+24.90  | 313.10        | 16.0  |
| IL 119                 |                                   | 765+24.90  |    | 771+70.00  | 645.10        | 32.0  |
| IL 49                  | Hope                              | 403+10.00  |    | 415+62.20  | 1,252.20      | 62.0  |
| IL 49                  |                                   | 436+27.80  |    | 451+99.70  | 1,571.90      | 78.0  |
| US 150                 | West of Oakwood / Hicks Gas       | 455+21.29  |    | 471+09.25  | 1,587.96      | 80.0  |
| US 150                 |                                   | 488+98.16  |    | 504+81.65  | 1,583.49      | 80.0  |
| US 150                 |                                   | 295+16.21  |    | 299+73.80  | 457.59        | 22.0  |
| US 150                 | East of Mission Field Rd          | 284+41.66  |    | 287+77.70  | 336.04        | 16.0  |
| US 150                 |                                   | 280+06.68  |    | 284+41.66  | 434.98        | 22.0  |
| US 150                 | West of Grays Siding Rd           | 276+96.67  |    | 280+06.68  | 310.01        | 16.0  |
| US 150                 |                                   | 274+75.77  |    | 276+96.67  | 220.90        | 12.0  |
| US 150                 | At Grays Siding Rd                | 268+58.37  |    | 274+75.77  | 617.40        | 30.0  |
| US 150                 |                                   | 254+55.04  |    | 261+85.66  | 730.62        | 36.0  |
| US 150                 | SW of Middle Fork Vermilion River | 210+99.25  |    | 218+97.02  | 797.77        | 40.0  |
| 850 E                  | South of Oakwood                  | 114+40.92  |    | 121+82.29  | 741.37        | 38.0  |
| 850 E / Winery         |                                   | 121+82.29  |    | 125+32.10  | 349.81        | 18.0  |
| 850 E / Winery         |                                   | 125+32.10  |    | 134+17.14  | 885.04        | 44.0  |
| EDGAR COUNTY RURAL     |                                   |            |    |            | TOTAL:        | 124.0   |
| EDGAR COUNTY RURAL     |                                   |            |    |            | ROUNDED:      | 130.0   |
| MCLEAN COUNTY RURAL    |                                   |            |    |            | TOTAL:        | 798.0   |
| MCLEAN COUNTY RURAL    |                                   |            |    |            | ROUNDED:      | 800.0   |
| VERMILION COUNTY RURAL |                                   |            |    |            | TOTAL:        | 682.0   |
| VERMILION COUNTY RURAL |                                   |            |    |            | ROUNDED:      | 690.0   |

• VARIOUS ROUTES

# RAISED REFLECTIVE PAVEMENT MARKER DETAIL



## TYPICAL PAVEMENT MARKERS LEGEND

◊ TWO-WAY CRYSTAL MARKER

|  |                     |            |           |   |   |                     |                           |                |         |        |                 |              |
|--|---------------------|------------|-----------|---|---|---------------------|---------------------------|----------------|---------|--------|-----------------|--------------|
| FILE NAME =  | USER NAME = hoganbj | DESIGNED - | REVISED - | <b>STATE OF ILLINOIS<br/>DEPARTMENT OF TRANSPORTATION</b> | <b>RAISED REFLECTIVE<br/>PAVEMENT MARKER DETAIL</b> |                     |                           | F.A.P.<br>RTE. | SECTION | COUNTY | TOTAL<br>SHEETS | SHEET<br>NO. |
| p:\11\084EBIDINTEG.illinois.gov\PIWIDOT\Documents\IDOT Offices\District 5\Projects\0577\Drawings\70B73 - Details.dgn |                     |            |           |   | DRAWN   | RRPM 2016-1         | VARIOUS                   | 8              | 8       |        |                 |              |
| PLOT SCALE = 40.0000' / in.  |                     |            |           |   | CHECKED -   | REVISED -           | CONTRACT NO. 70B73        |                |         |        |                 |              |
| PLOT DATE = 1/26/2016  |                     |            |           |   | DATE -  | REVISED -           | ILLINOIS FED. AID PROJECT |                |         |        |                 |              |
|  |                     |            |           |   | SCALE:  | SHEET 1 OF 1 SHEETS | STA.                      | TO STA.        |         |        |                 |              |

• VARIOUS ROUTES