

STATE OF ILLINOIS
DEPARTMENT OF TRANSPORTATION
DIVISION OF HIGHWAYS

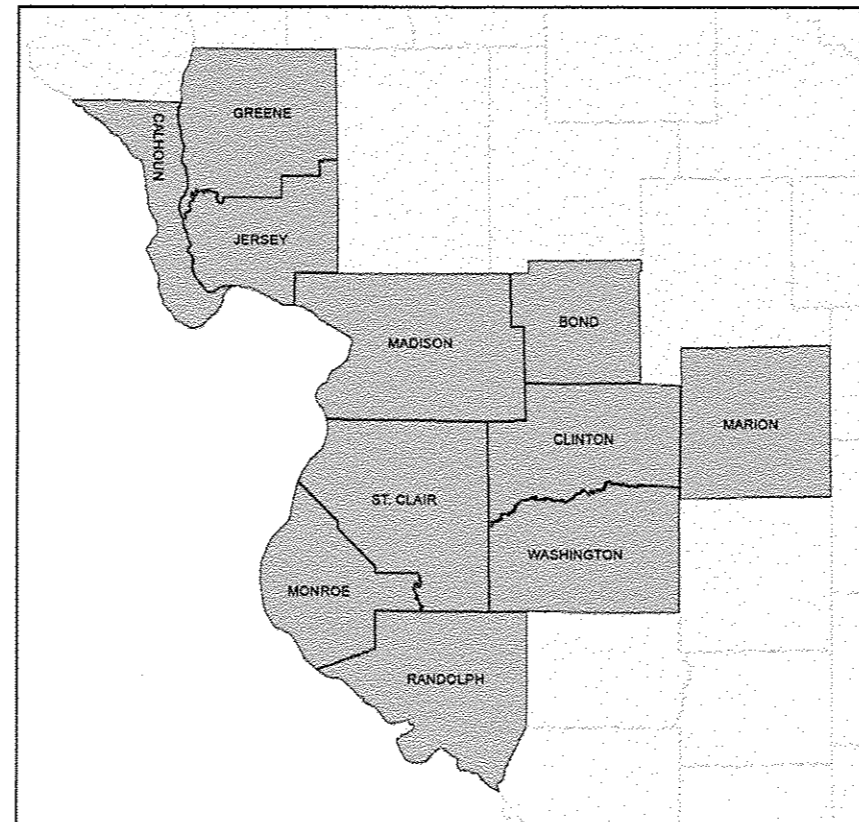
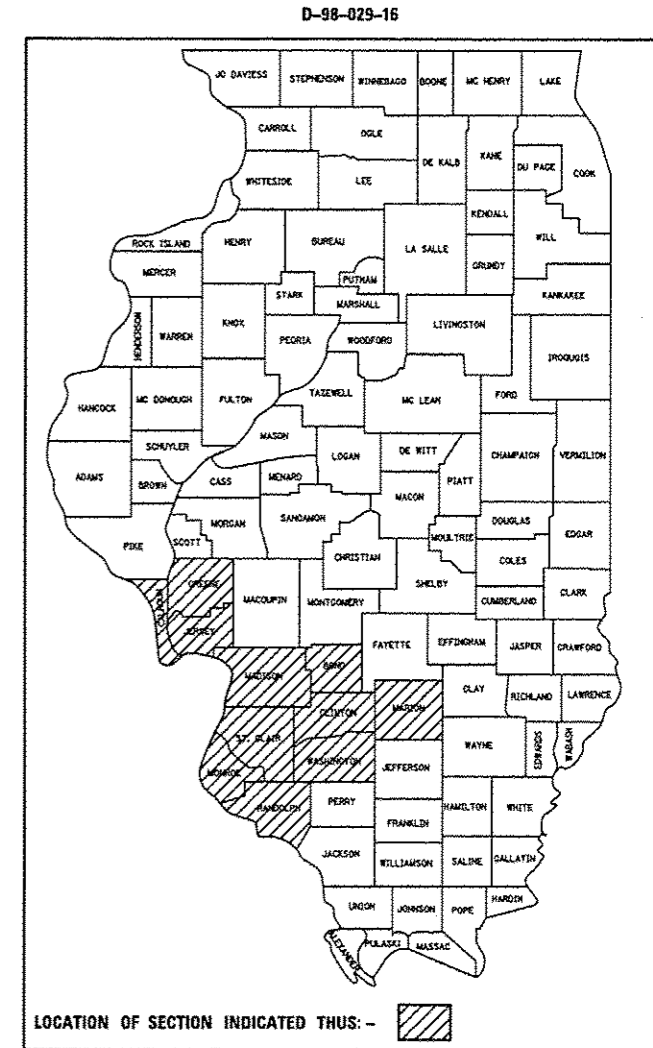
**PROPOSED
HIGHWAY PLANS**

VARIOUS ROUTES
SECTION DIST 8 GUARDRAIL 2017-1
SAFETY ITEM REPAIR
VARIOUS COUNTIES

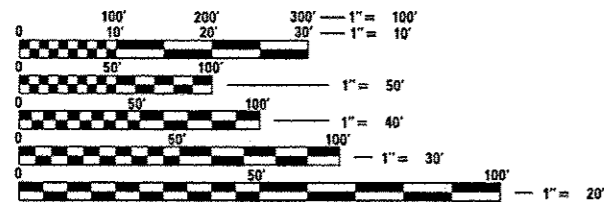
C-98-023-16

F.A. RTE.	SECTION	COUNTY	TOTAL SHEETS	SHEET NO.
VARIOUS	DIST 8 GUARDRAIL 2017-1	VARIOUS	12	1
		ILLINOIS	CONTRACT NO. 76J49	

FOR INDEX OF SHEETS, SEE SHEET NO. 2



NOT TO SCALE



FULL SIZE PLANS HAVE BEEN PREPARED USING STANDARD ENGINEERING SCALES. REDUCED SIZED PLANS WILL NOT CONFORM TO STANDARD SCALES. IN MAKING MEASUREMENTS ON REDUCED PLANS, THE ABOVE SCALES MAY BE USED.

J.U.L.I.E.
JOINT UTILITY LOCATION INFORMATION FOR EXCAVATION
1-800-892-0123
OR 811

PROJECT ENGINEER: HERVE GELIN (618) 346-3179
PROJECT MANAGER: BILLIE OWEN (618) 346-3329

CONTRACT NO. 76J49

STATE OF ILLINOIS
DEPARTMENT OF TRANSPORTATION
DIVISION OF HIGHWAYS

SUBMITTED March 23 2016

Jeffrey Z. Kammer
REGIONAL ENGINEER, REGION 5

Maureen M. Addis, P.E.
ENGINEER OF DESIGN AND ENVIRONMENT

Osman Osman, P.E.
DIRECTOR OF HIGHWAYS, CHIEF ENGINEER

PRINTED BY THE AUTHORITY
OF THE STATE OF ILLINOIS

CODE NO.	ITEM	UNIT	TOTAL QUANTITY	CONSTRUCTION CODE		
				07E0V CONT. MAINT 0021	07M0V MCHDF 0021	07A0V HTMCB 0021
			100% STATE			
63000350	LONG-SPAN GUARDRAIL OVER CULVERT, 12 FT 6 IN SPAN	FOOT	162.5	162.5		
63100045	TRAFFIC BARRIER TERMINAL, TYPE 2	EACH	7	4	3	
63100070	TRAFFIC BARRIER TERMINAL, TYPE 5	EACH	5	4	1	
63100085	TRAFFIC BARRIER TERMINAL, TYPE 6	EACH	9	8	1	
63100167	TRAFFIC BARRIER TERMINAL, TYPE 1 (SPECIAL) TANGENT	EACH	83	65	18	
63100169	TRAFFIC BARRIER TERMINAL, TYPE 1 (SPECIAL) FLARED	EACH	25	5	20	
64300260	IMPACT ATTENUATORS (FULLY REDIRECTIVE, NARROW), TEST LEVEL 3	EACH	5	3	2	
64300370	IMPACT ATTENUATORS (FULLY REDIRECTIVE, WIDE), TEST LEVEL 3	EACH	5	3	2	
67100100	MOBILIZATION	LSUM	1	0.33	0.34	0.33
X0325972	CABLE GUARD POST	EACH	340			340
X0326466	HIGH TENSION CABLE POST REPAIR	EACH	80			80
X0326468	MEDIAN CABLE	FOOT	300			300
X6300210	GUARDRAIL BLOCKS	EACH	785	400	385	
X6300215	RAIL ELEMENT PLATES	EACH	510	200	310	

FILE NAME *	USER NAME * chollondeske	DESIGNED -	REVISED -	STATE OF ILLINOIS DEPARTMENT OF TRANSPORTATION	SUMMARY OF QUANTITIES			F.A. RTE.	SECTION	COUNTY	TOTAL SHEETS	SHEET NO.
p:\11\84E8ID\INTEG\Illinois.gov\PIDOT\Documents\DOT Offices\District 8\Projects\087	PROJECT * 087	CHECKED -	REVISED -					VARIOUS	DIST 8 GUARDRAIL 2017-1	VARIOUS	12	3
Default	PLOT SCALE * 100.0000' / 1" =	DATE -	REVISED -		SCALE: NONE	SHEET 1	OF 3 SHEETS	STA.	TO STA.	CONTRACT NO. 76J49		
	PLOT DATE * 3/21/2016									ILLINOIS FED. AID PROJECT		

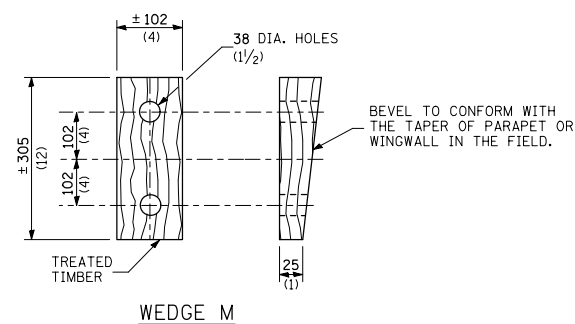
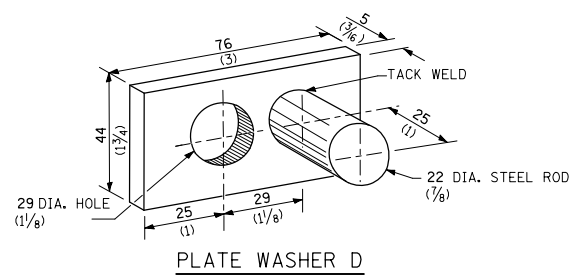
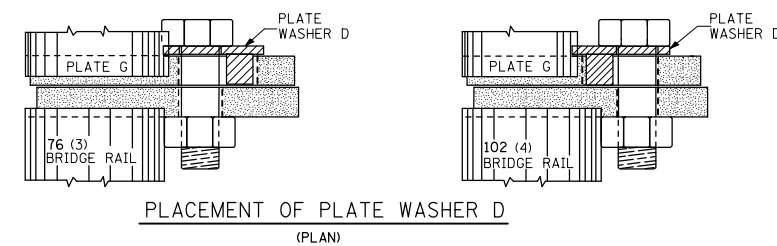
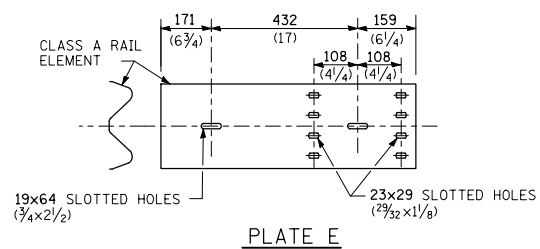
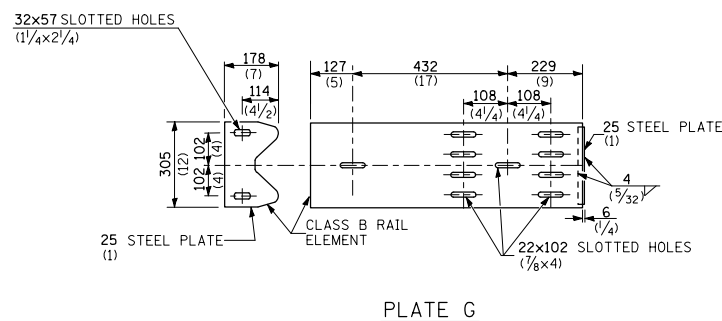
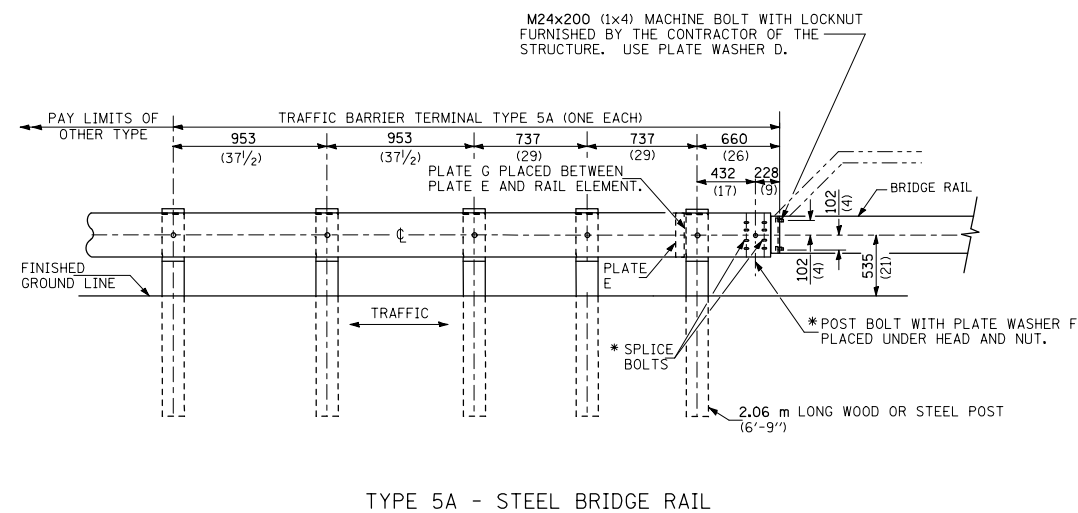
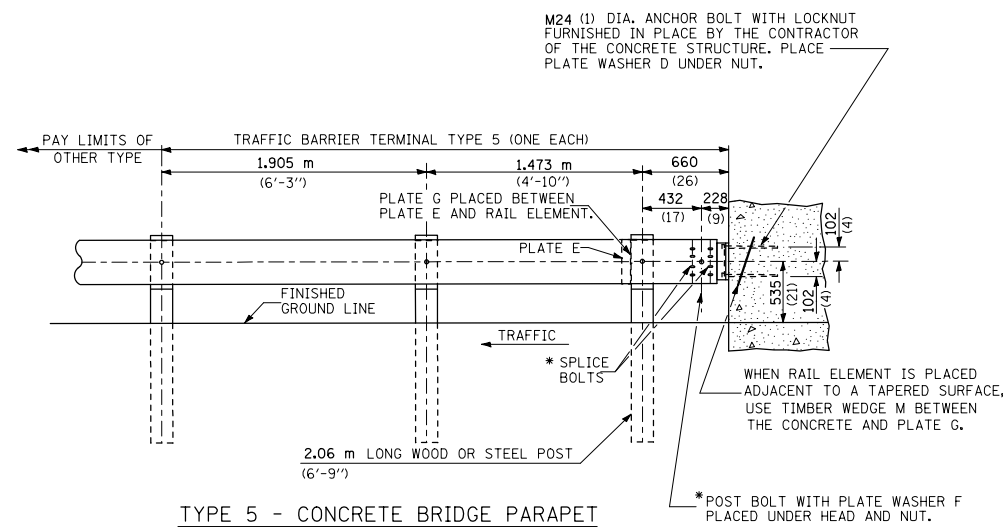
CODE NO.	ITEM	UNIT	TOTAL QUANTITY	CONSTRUCTION CODE		
				CONT. MAINT 0021	MCHDF 0021	HTMCB 0021
X6300217	RAIL ELEMENT PLATES (RADIUS)	EACH	50	25	25	
X6300220	EXTRUDER HEAD	EACH	15	10	5	
X6300225	SINGLE END SECTION	EACH	3	2	1	
X6300231	STEEL POST, ATTACHED TO STRUCTURES	EACH	7	3	4	
X6300236	STEEL POSTS 6'	EACH	625	300	325	
X6300239	STEEL POSTS 9'	EACH	250	100	150	
X6331110	STEEL POSTS, SPECIAL	EACH	12	10	2	
X6430210	REMOVE AND REINSTALL IMPACT ATTENUATORS	EACH	85	20	65	
X7011834	TRAFFIC CONTROL AND PROTECTION, CALL OUT WORK	EACH	296	176	120	
X7011836	TRAFFIC CONTROL AND PROTECTION, FREEWAY/EXPRESSWAY, CALL OUT WORK	EACH	275	175	100	
X8030110	LOCATING UNDERGROUND CABLE, SPECIAL	EACH	7	5	2	
Z0029655	HIGH TENSION CABLE ROAD GUARDPOST	EACH	825			825
Z0029657	HIGH TENSION CABLE SYSTEM MAINTENANCE	EACH	35			35
Z0029658	REPAIR TRAFFIC BARRIER TERMINAL TYPE 1 SPECIAL - POST	EACH	79	14	65	

100%
STATE



FOR INFORMATION ONLY.
 CONTRACTOR SHALL CONFIRM
 SYSTEM TYPE PRIOR TO
 ORDERING MATERIALS.

FILE NAME =		USER NAME = chollandeske	DESIGNED -	REVISED -	STATE OF ILLINOIS DEPARTMENT OF TRANSPORTATION	HIGH TENSION CABLE LOCATION MAP		F.A. RTE.	SECTION	COUNTY	TOTAL SHEETS	SHEET NO.						
Default		PLOT SCALE = 100.0000' / in.	CHECKED -	REVISED -		SCALE: NONE	SHEET	OF	SHEETS	STA.	TO	STA.	VARIOUS	DIST 8 GUARDRAIL 2017-1	VARIOUS	12	6	
		PLOT DATE = 3/17/2016	DATE -	REVISED -														
													CONTRACT NO. 76J49		ILLINOIS FED. AID PROJECT			



GENERAL NOTES

INSTALL PLATE WASHER D SO THAT THE 25 mm (1") PROJECTION FILLS THE REMAINDER OF THE SLOTTED HOLES IN THE 25 mm (1") END PLATE ON PLATE G AFTER THE M24 (1") DIA. BOLTS ARE IN PLACE.

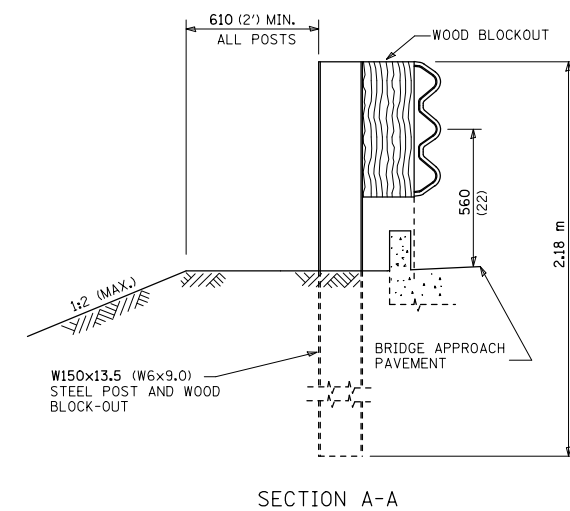
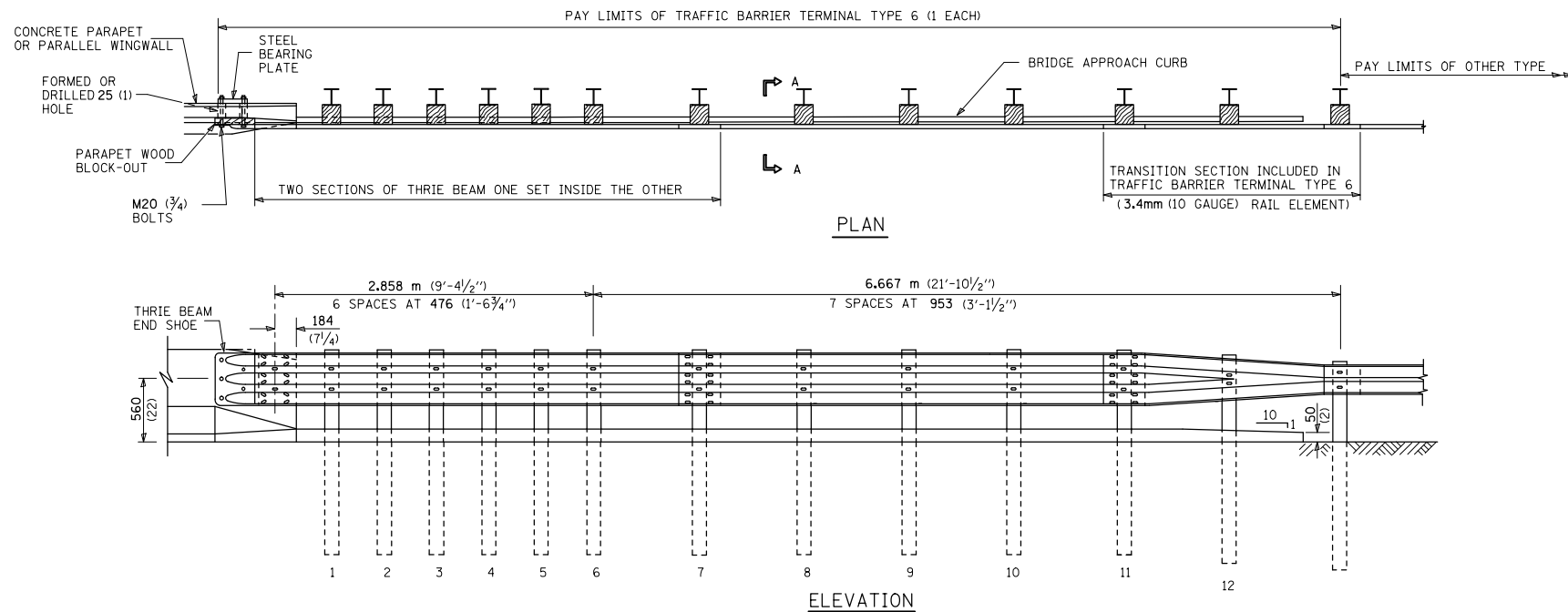
* BOLTS SHALL BE PROVIDED WITH LOCKNUT OR DOUBLE NUT AND SHALL BE TIGHTENED ONLY TO A POINT THAT WILL ALLOW PLATE G TO BE FREE TO MOVE WHEN AN EXPANSION JOINT EXISTS BELOW THE CONNECTOR.

ALL DIMENSIONS ARE IN MILLIMETERS (INCHES) UNLESS OTHERWISE SHOWN.

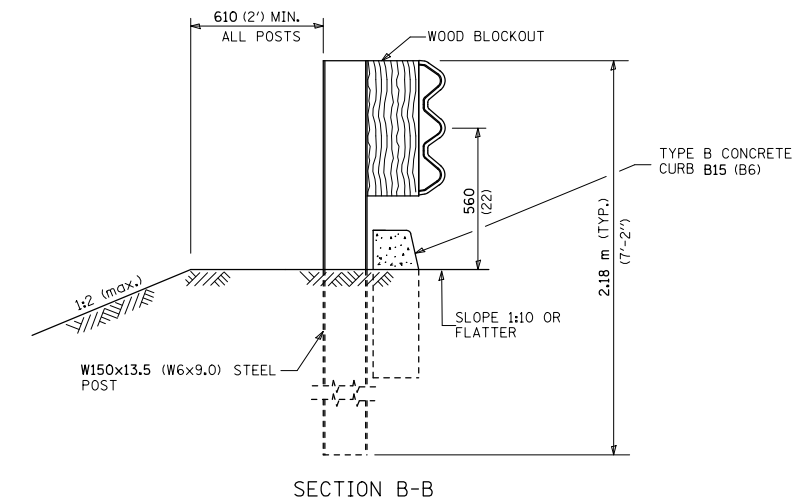
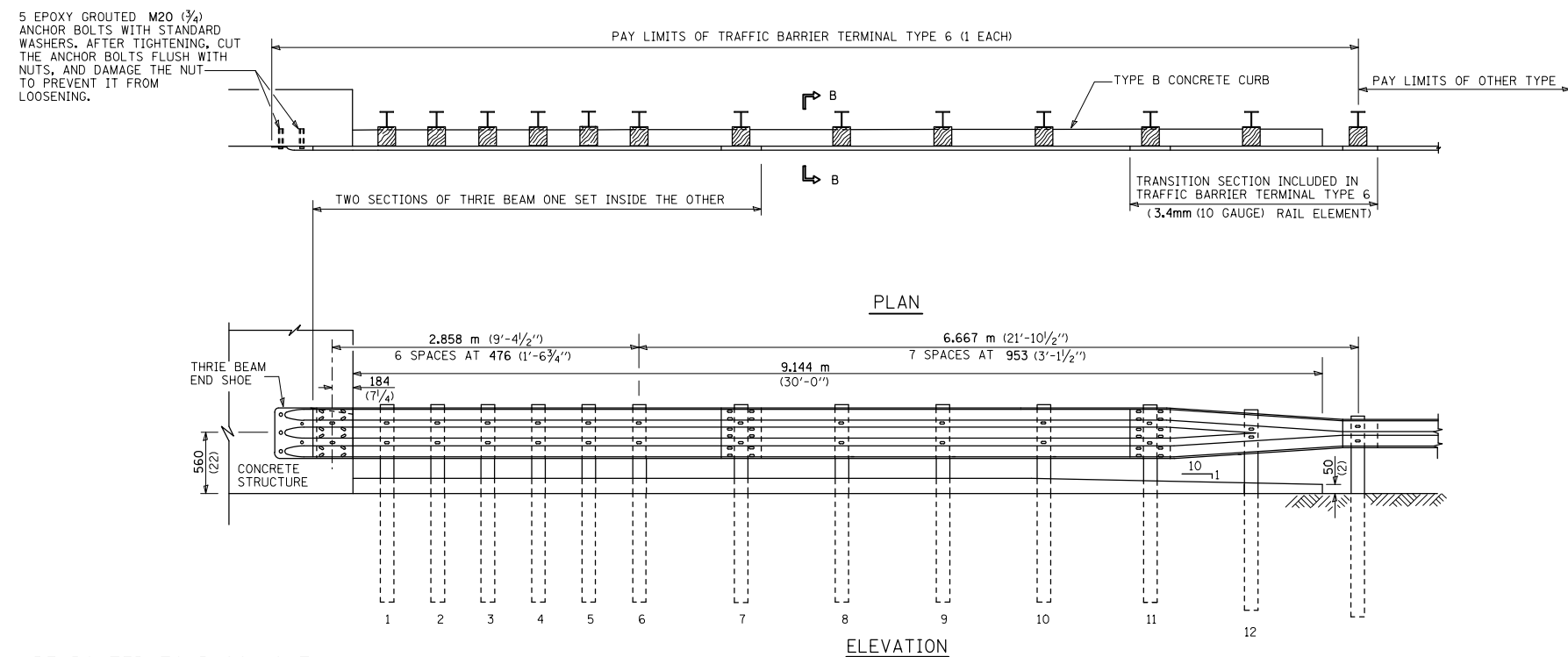
THIS DETAIL IS APPLICABLE TO THE GUARDRAIL SYSTEM USED PRIOR TO JANUARY 1, 2007. FOR DETAILS ON THE MIDWEST GUARDRAIL SYSTEM, SEE STANDARD 630001.

FILE NAME =	USER NAME = chollandeske	DESIGNED -	REVISED -	STATE OF ILLINOIS DEPARTMENT OF TRANSPORTATION	TRAFFIC BARRIER TERMINAL TYPE 5 & 5A			F.A. RTE.	SECTION	COUNTY	TOTAL SHEETS	SHEET NO.
pw:\IL084EBIDINTEG.illinois.gov\PWIDOT\Documents\DOT Offices\District 8\Projects\D876\DRAWINGData\CADsheets\D876J49-sht-deta		CHECKED -	REVISED -		VARIOUS	DIST 8 GUARDRAIL 2017-1	VARIOUS	12	7			
Default	PLOT SCALE = 100.0000' / 1in.	DATE -	REVISED -		SCALE: NONE SHEET 1 OF 1 SHEETS STA. TO STA.			CONTRACT NO. 76J49				
	PLOT DATE = 3/17/2016				ILLINOIS FED. AID PROJECT							

PARAPET
OR
WINGWALL



OTHER CONCRETE STRUCTURE



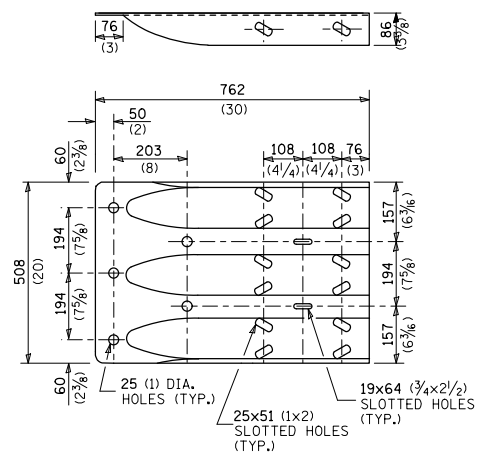
GENERAL NOTES

- THRIE BEAM RAIL SHALL BE BOLTED TO BLOCK-OUT AT ALL POSTS.
- ALL SLOPE RATIOS ARE EXPRESSED AS UNITS OF VERTICAL DISPLACEMENT TO UNITS OF HORIZONTAL DISPLACEMENT (V:H).
- ALL DIMENSIONS ARE IN MILLIMETERS (INCHES) UNLESS OTHERWISE SHOWN.

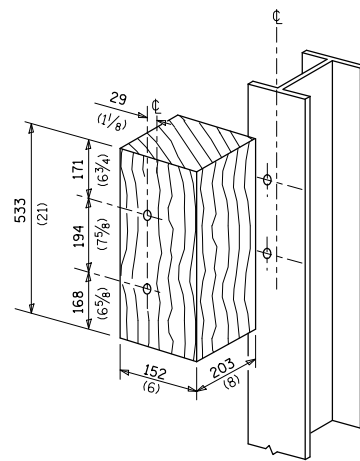
THIS DETAIL IS APPLICABLE TO THE GUARDRAIL SYSTEM USED PRIOR TO JANUARY 1, 2007. FOR DETAILS ON THE MIDWEST GUARDRAIL SYSTEM, SEE STANDARD 630001.

FILE NAME =	USER NAME = challandeske	DESIGNED -	REVISED -	STATE OF ILLINOIS DEPARTMENT OF TRANSPORTATION	TRAFFIC BARRIER TERMINAL, TYPE 6	F.A. RTE.	SECTION	COUNTY	TOTAL SHEETS	SHEET NO.
Default	PLOT SCALE = 100.0000' / 1in.	CHECKED -	REVISED -			VARIOUS	DIST 8 GUARDRAIL 2017-1	VARIOUS	12	8
	PLOT DATE = 3/17/2016	DATE -	REVISED -			CONTRACT NO. 76J49			ILLINOIS FED. AID PROJECT	

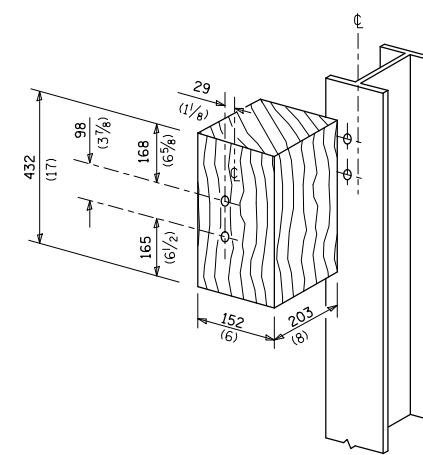
SCALE: NONE SHEET 1 OF 2 SHEETS STA. TO STA.



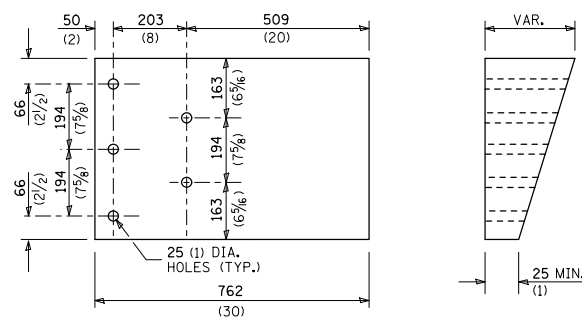
THRIE BEAM END SHOE DETAIL



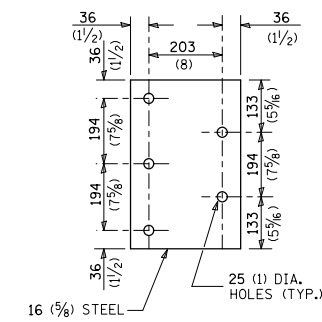
POSTS 1-11 WOOD BLOCKOUT DETAIL



POST 12 WOOD BLOCKOUT DETAIL



PARAPET WOOD BLOCK-OUT DETAIL

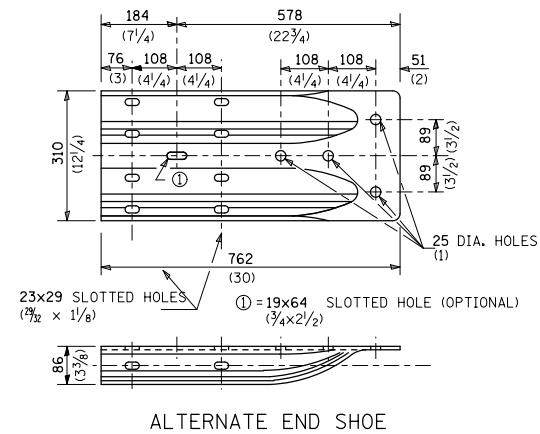
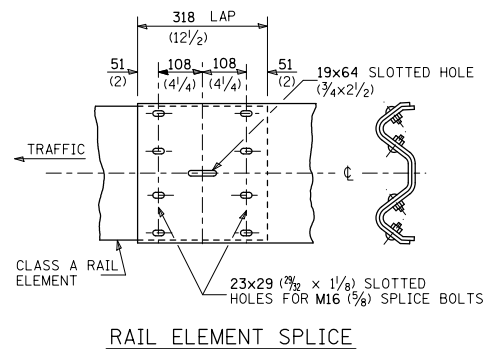
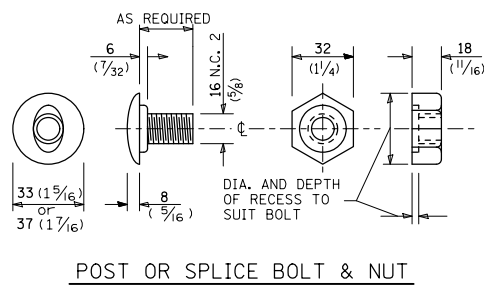
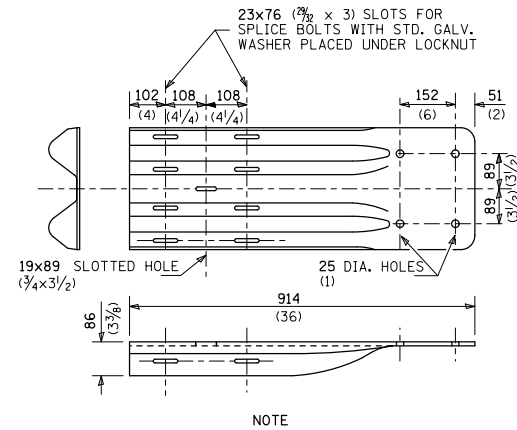
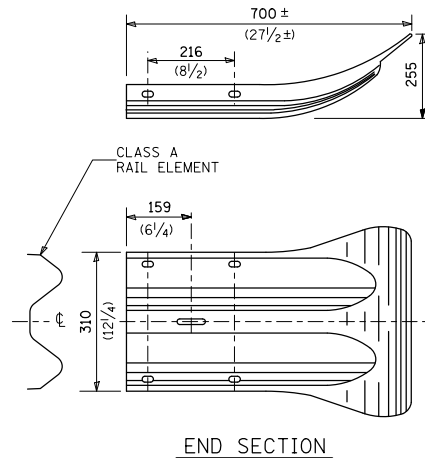
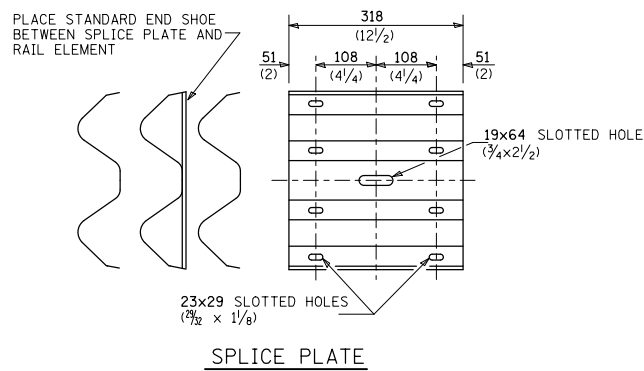
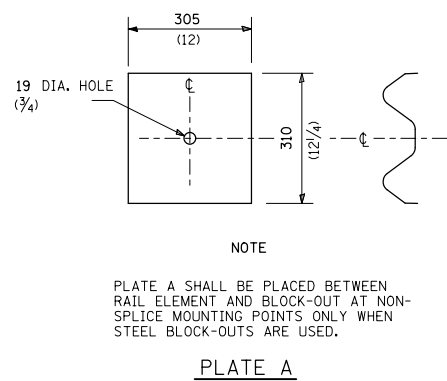
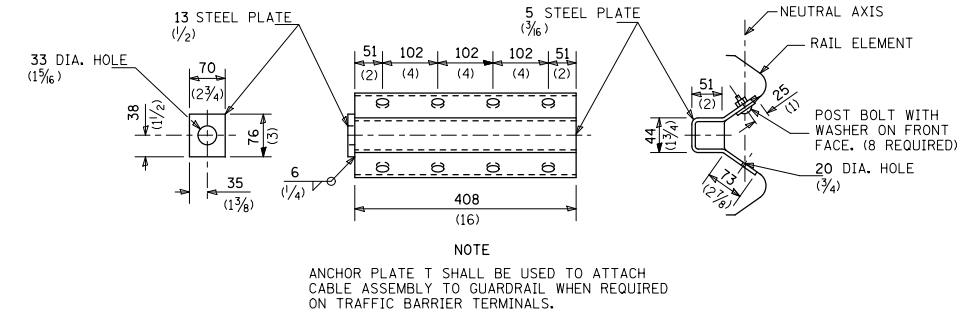
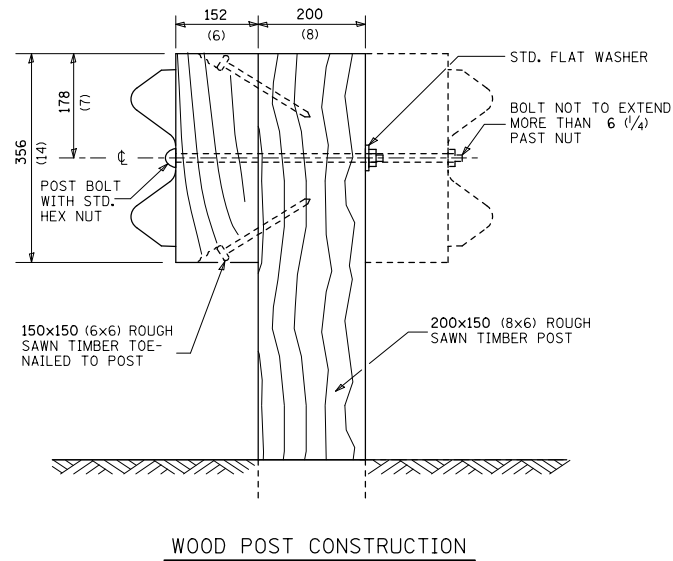
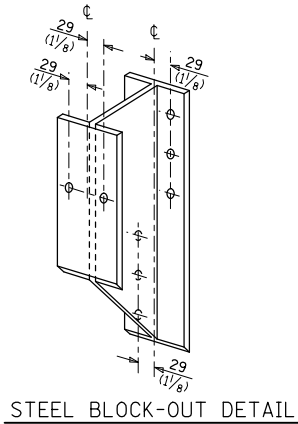
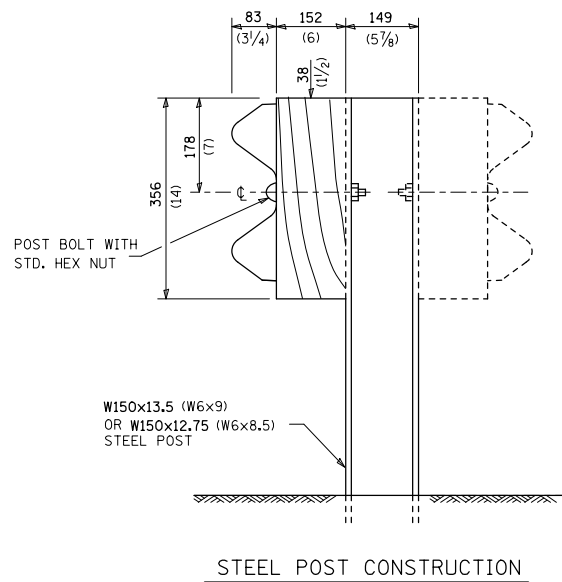


PARAPET STEEL BEARING PLATE DETAIL

(5 EACH INDIVIDUAL 125x125x16 (5x5x5/8) STEEL PLATES WITH CENTERED 25 (1) HOLES MAY BE SUBSTITUTED FOR THE PLATE SHOWN.)

THIS DETAIL IS APPLICABLE TO THE GUARDRAIL SYSTEM USED PRIOR TO JANUARY 1, 2007. FOR DETAILS ON THE MIDWEST GUARDRAIL SYSTEM, SEE STANDARD 630001.

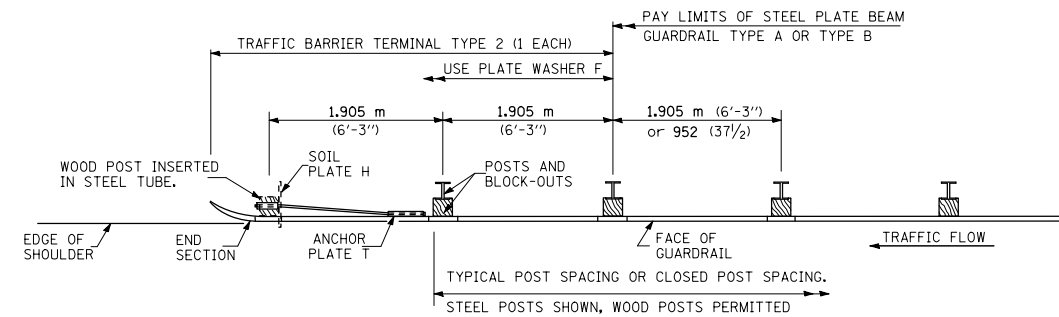
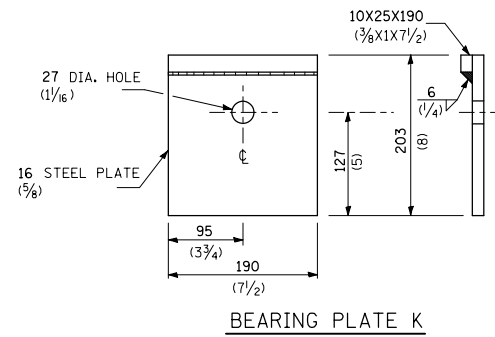
FILE NAME =	USER NAME = challandeske	DESIGNED -	REVISED -	STATE OF ILLINOIS DEPARTMENT OF TRANSPORTATION	TRAFFIC BARRIER TERMINAL, TYPE 6			F.A. RTE.	SECTION	COUNTY	TOTAL SHEETS	SHEET NO.
pw:\11\084EBIDINTEG.illinois.gov\PIWIDOT\Documents\IDOT Offices\District 8\Projects\D876\Drawings\6AD\6AD sheets\D876J49-sht-deta	DRAWN	REVISED -	REVISED -					VARIOUS	DIST 8 GUARDRAIL 2017-1	VARIOUS	12	9
Default	PLOT SCALE = 100.0000' / 1in.	CHECKED -	REVISED -					CONTRACT NO. 76J49				
	PLOT DATE = 3/17/2016	DATE -	REVISED -					ILLINOIS FED. AID PROJECT				
				SCALE: NONE	SHEET 2	OF 2 SHEETS	STA.	TO STA.				



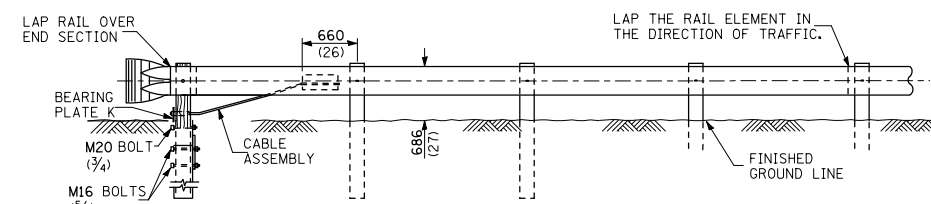
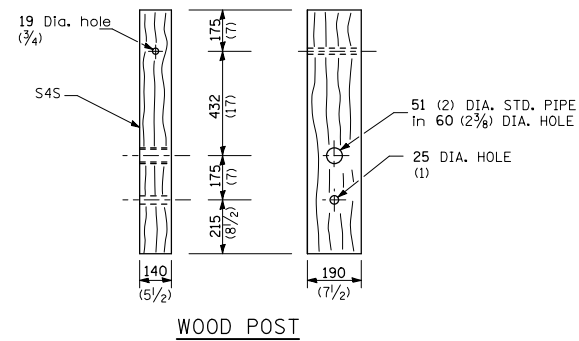
NOTE: WHEN END SHOE IS ATTACHED TO A BRIDGE PARAPET WHICH HAS AN EXPANSION JOINT, THE BOLTS SHALL BE PROVIDED WITH A LOCKNUT OR DOUBLE NUT AND SHALL BE TIGHTENED ONLY TO A POINT THAT WILL ALLOW GUARDRAIL MOVEMENT. THE STANDARD END SHOE SHALL BE ATTACHED TO THE CONCRETE WITH PRE-DRILLED OR SELF-DRILLING ANCHOR BOLTS. THE ANCHOR CONE SHALL BE SET FLUSH WITH THE SURFACE OF THE CONCRETE. EXTERNALLY THREADED STUDS PROTRUDING FROM THE SURFACE OF THE CONCRETE WILL NOT BE PERMITTED.

THIS DETAIL IS APPLICABLE TO THE GUARDRAIL SYSTEM USED PRIOR TO JANUARY 1, 2007. FOR DETAILS ON THE MIDWEST GUARDRAIL SYSTEM, SEE STANDARD 630001.

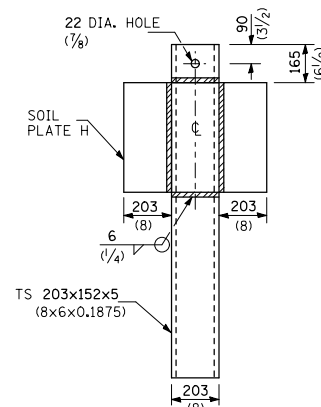
FILE NAME =	USER NAME = chollandeske	DESIGNED -	REVISED -	STATE OF ILLINOIS DEPARTMENT OF TRANSPORTATION	STEEL PLATE BEAM GUARDRAIL			F.A. RTE.	SECTION	COUNTY	TOTAL SHEETS	SHEET NO.
Default		CHECKED -	REVISED -		VARIOUS	DIST 8 GUARDRAIL 2017-1	VARIOUS	12	11			
	PLOT SCALE = 100.0000' / 1in.	DATE -	REVISED -		SCALE: NONE SHEET 2 OF 2 SHEETS STA. TO STA.			CONTRACT NO. 76J49				
	PLOT DATE = 3/17/2016				ILLINOIS FED. AID PROJECT							



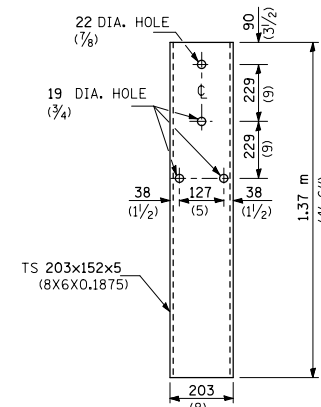
PLAN



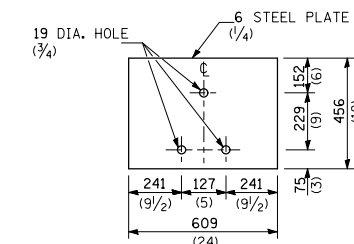
ELEVATION



ALTERNATE SOIL PLATE CONNECTION



STEEL TUBE



SOIL PLATE H

GENERAL NOTES

USE PLATE WASHER F AT ALL POSTS.

THE BEARING PLATE K SHALL BE HELD IN POSITION BY (2) TWO EIGHT PENNY NAILS DRIVEN INTO THE POST AND BENT OVER THE TOP OF THE PLATE.

ALL DIMENSIONS ARE IN MILLIMETERS (INCHES) UNLESS OTHERWISE SHOWN.

THIS DETAIL IS APPLICABLE TO THE GUARDRAIL SYSTEM USED PRIOR TO JANUARY 1, 2007. FOR DETAILS ON THE MIDWEST GUARDRAIL SYSTEM, SEE STANDARD 630001.

FILE NAME =	USER NAME = challandeske	DESIGNED -	REVISED -	STATE OF ILLINOIS DEPARTMENT OF TRANSPORTATION	TRAFFIC BARRIER TERMINAL TYPE 2			F.A. RTE.	SECTION	COUNTY	TOTAL SHEETS	SHEET NO.	
pw:\IL\084EBID\INTEG.illinois.gov\PIWIDOT\Documents\IDOT Offices\District 8\Projects\0876\Drawings\6AD\Sheets\0876J49-sht-detals	DRAWN	CHECKED -	REVISED -					VARIOUS	DIST 8 GUARDRAIL 2017-1	VARIOUS	12	12	
Default	PLOT SCALE = 100.0000' / 1in.	DATE -	REVISED -					SCALE: NONE SHEET 1 OF 1 SHEETS STA. TO STA.			CONTRACT NO. 76J49		
	PLOT DATE = 3/17/2016							ILLINOIS FED. AID PROJECT					