

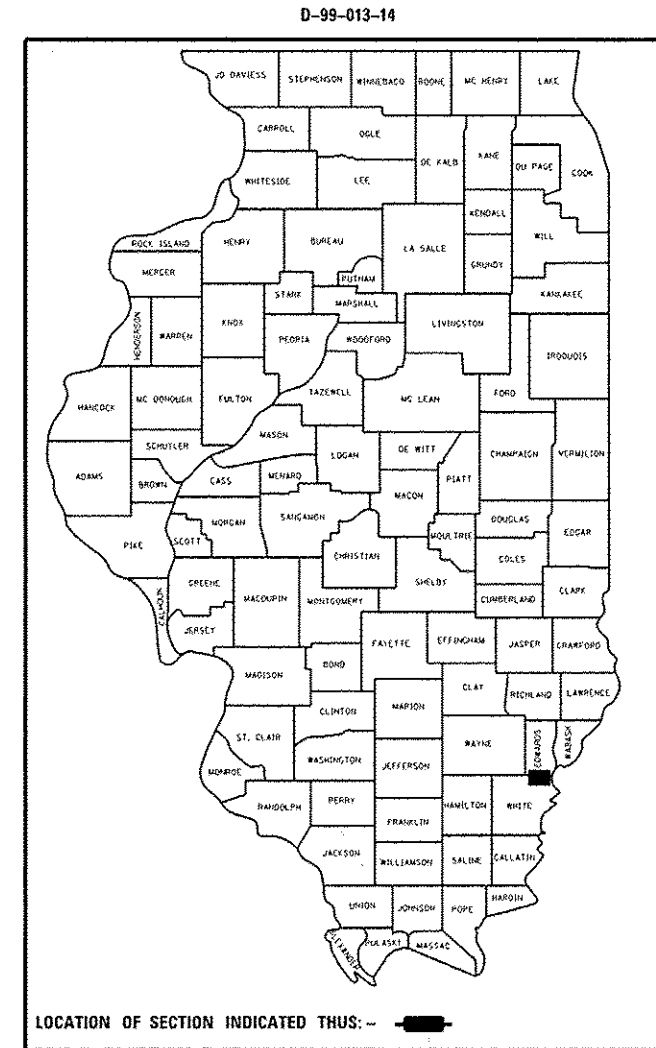
STATE OF ILLINOIS
DEPARTMENT OF TRANSPORTATION
DIVISION OF HIGHWAYS

F.A.L. RTE.	SECTION	COUNTY	TOTAL SHEETS	SHEET NO.
64	*	WHITE	27	1
ILLINOIS CONTRACT NO. 78393				
*09 SKEETER MTN REST AREA 2014-1				

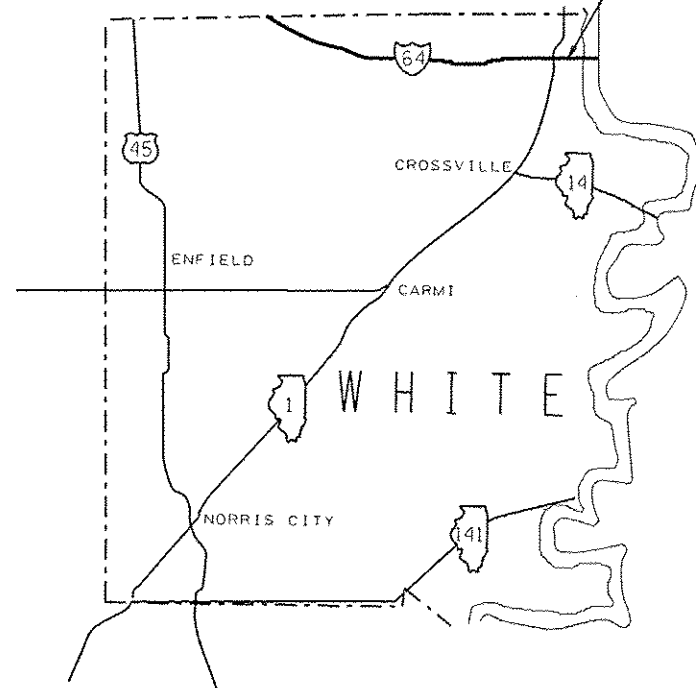
FOR INDEX OF SHEETS, SEE SHEET NO. 3

**PROPOSED
HIGHWAY PLANS**
FAI 64 (I-64)
SECTION D9 SKEETERMTN REST AREA 2014-1
REST AREA REPAIR AND ADA IMPROVEMENTS
WHITE COUNTY

C-99-014-14



PROJECT LOCATION
I-64 WB
MILE MARKER 131



J.U.L.I.E.
JOINT UTILITY LOCATION INFORMATION FOR EXCAVATION
1-800-892-0123
OR 811

PROJECT ENGINEER CHARLES STEIN
PROJECT DESIGNER VALERIE ROLLA

CONTRACT NO. 78393

STATE OF ILLINOIS
DEPARTMENT OF TRANSPORTATION
DIVISION OF HIGHWAYS

SUBMITTED April 4 2016
Jeffrey L Keirn
REGION FIVE ENGINEER

May 6 2016
Maurice M. Addis PE
acting ENGINEER OF DESIGN AND ENVIRONMENT

May 6 2016
Annelle [Signature]
DIRECTOR OF PROGRAM DEVELOPMENT

PRINTED BY THE AUTHORITY
OF THE STATE OF ILLINOIS

Prepared By: [Signature]
DISTRICT STUDIES & PLANS ENGINEER

Examined By: [Signature]
DISTRICT LAND ACQUISITION ENGINEER

Examined By: [Signature]
DISTRICT PROGRAM DEVELOPMENT ENGINEER

Examined By: [Signature]
DISTRICT OPERATIONS ENGINEER

Examined By: [Signature]
DISTRICT PROJECT IMPLEMENTATION ENGINEER

Examined By: [Signature]
DISTRICT CONSTRUCTION ENGINEER

Examined By: [Signature]
DISTRICT MATERIALS ENGINEER

FILE NAME :	USER NAME :	DESIGNED :	REVISED :	STATE OF ILLINOIS DEPARTMENT OF TRANSPORTATION	SIGNATURE SHEET				F.A.I. RTE.	SECTION	COUNTY	TOTAL SHEETS	SHEET NO.
pxr\IL04EBIDINTEG\Illinois.gov\PI001\Documents\1001 Offices\District 9\Projects\78393\Drawings\78393-shb-tpd.sch	vallav	DRAWN	REVISED		64		WHITE	29	2				
		CHECKED	REVISED		SCALE: SHEET OF SHEETS STA. TO STA.				CONTRACT NO. 78393				
Default		DATE	REVISED						ILLINOIS FED. AID PROJECT				

INDEX OF SHEETS

SHEET NO.	DESCRIPTION
1	COVER SHEET
2	SIGNATURE SHEET
3	INDEX OF SHEETS, STANDARDS, & GENERAL NOTES
4-7	SUMMARY OF QUANTITIES
8-11	TYPICAL SECTIONS
12-13	SCHEDULES
14-15	ALIGNMENTS
16	PARKING LOT REMOVAL
17	PARKING LOT PROPOSED WORK
18	SIDEWALK REMOVAL
19	SIDEWALK PROPOSED WORK
20-23	SIDEWALK PLAN/PROFILE
24	PAVEMENT MARKING PLAN
25	DETAIL - INLETS TO BE ADJUSTED
26	DETAIL - PVT WIDEN & CULVERT EXT; SIDEWALK TIE BAR
27	SIGN DETAILS

GENERAL NOTES

FACTORS USED FOR ESTIMATING PLAN QUANTITIES ARE AS FOLLOWS AND SHALL NOT BE USED FOR THE BASIS OF FINAL QUANTITIES:

ALL AGGREGATE 2.05 TONS/CU YD

COMMITMENTS: NONE

STANDARDS

000001-06
 001001-02
 001006
 280001-07
 420001-08
 420101-05
 424001-08
 424016-02
 483001-04
 542301-03
 606001-06
 701901-05
 720006-04

FILE NAME *	USER NAME * ealom	DESIGNED -	REVISED -	STATE OF ILLINOIS DEPARTMENT OF TRANSPORTATION	INDEX OF SHEETS, STANDARDS GENERAL NOTES		F.A.I. RTE.	SECTION	COUNTY	TOTAL SHEETS	SHEET NO.
p:\11884EBID\INTEG.illinois.gov\PI007\Documents\1007 Of fissa\District 9\Projects\78393\78393-stds\stds.dgn	DDAWA	CHECKED -	REVISED -				64	*	WHITE	27	3
PLOT SCALE * 1/8" = 1'-0"							CONTRACT NO. 78393				
Default	PLOT DATE * 4/4/2016	DATE -	REVISED -		SCALE:	SHEET	OF	SHEETS	STA.	TO STA.	ILLINOIS FED. AID PROJECT

SUMMARY OF QUANTITIES

COUNTY:	White
ROUTE:	FAI 64 (I-64),
FUNDING:	100% STATE
LOCATION:	RURAL
TOTAL QUANTITY	ROADWAY 0005

CODE NUMBER	ITEM DESCRIPTION	UNIT	TOTAL QUANTITY	
20100110	TREE REMOVAL (6 TO 15 UNITS DIAMETER)	UNIT	7	7
20200100	EARTH EXCAVATION	CU YD	1,973	1,973
25000115	SEEDING, CLASS 1B	ACRE	0.1	0.1
25000350	SEEDING, CLASS 7	ACRE	0.1	0.1
25000400	NITROGEN FERTILIZER NUTRIENT	POUND	18	18
25000500	PHOSPHORUS FERTILIZER NUTRIENT	POUND	9	9
25000600	POTASSIUM FERTILIZER NUTRIENT	POUND	9	9
25000700	AGRICULTURAL GROUND LIMESTONE	TON	0.2	0.2
25100115	MULCH, METHOD 2	ACRE	0.1	0.1
28000250	TEMPORARY EROSION CONTROL SEEDING	POUND	30	30
31101900	SUBBASE GRANULAR MATERIAL, TYPE C	TON	333	333
35100700	AGGREGATE BASE COURSE, TYPE A 8"	SQ YD	6,792	6,792
42000301	PORTLAND CEMENT CONCRETE PAVEMENT 8" (JOINTED)	SQ YD	6,214	6,214

12

FILE NAME *	USER NAME * colum	DESIGNED -	REVISED -	STATE OF ILLINOIS DEPARTMENT OF TRANSPORTATION	SUMMARY OF QUANTITIES	F.A.I. RTE.	SECTION	COUNTY	TOTAL SHEETS	SHEET NO.
pl\l\084EB10INTEG\Illinois.gov\FWIDOT\Documents\DOT Offices\District 9\Projects\78393\084EB10INTEG\78393-shb-tp.dgn	pl\l\084EB10INTEG\Illinois.gov\FWIDOT\Documents\DOT Offices\District 9\Projects\78393\084EB10INTEG\78393-shb-tp.dgn	CHECKED -	REVISED -			64		WHITE	27	4
Default	PLOT SCALE * 100,0000 1/ in.	DATE -	REVISED -		SCALE:	SHEET	OF	SHEETS	STA.	TO STA.
	PLOT DATE * 4/4/2016									

SUMMARY OF QUANTITIES - CONT

COUNTY:	White
ROUTE:	FAI 64 (I-64),
FUNDING:	100% STATE
LOCATION:	RURAL
TOTAL QUANTITY	ROADWAY 0005

CODE NUMBER	ITEM DESCRIPTION	UNIT	TOTAL QUANTITY	
42400100	PORTLAND CEMENT CONCRETE SIDEWALK 4 INCH	SO FT	5,115.7	5,115.7
42400800	DETECTABLE WARNINGS	SO FT	41.5	41.5
44000100	PAVEMENT REMOVAL	SO YD	3,125	3,125
44000500	COMBINATION CURB AND CUTTER REMOVAL	FOOT	284	284
44000600	SIDEWALK REMOVAL	SO FT	3,795	3,795
44004250	PAVED SHOULDER REMOVAL	SO YD	1,756	1,756
44201299	DOWEL BARS 1 1/2"	EACH	76	76
44213198	TIE BARS 1/2"	EACH	66	66
44213204	TIE BARS 3/4"	EACH	1,080	1,080
48300300	PORTLAND CEMENT CONCRETE SHOULDERS 8"	SO YD	857	857
50105220	PIPE CULVERT REMOVAL	FOOT	6	6
542A1075	PIPE CULVERTS, CLASS A, TYPE 2 30"	FOOT	14	14

12

SUMMARY OF QUANTITIES - CONT

COUNTY:	White
ROUTE:	FAI 64 (I-64),
FUNDING:	100% STATE
LOCATION:	RURAL
TOTAL QUANTITY	ROADWAY 0005

CODE NUMBER	ITEM DESCRIPTION	UNIT	TOTAL QUANTITY	
54213675	PRECAST REINFORCED CONCRETE FLARED END SECTIONS 30"	EACH	1	1
60260100	INLETS TO BE ADJUSTED	EACH	2	2
60603500	COMBINATION CONCRETE CURB AND GUTTER, TYPE B-6, 06	FOOT	131.3	131.3
67000400	ENGINEER'S FIELD OFFICE, TYPE A	CAL MO	3	3
67100100	MOBILIZATION	LSUM	1	1
* 72000100	SIGN PANEL - TYPE 1	SQ FT	13.5	13.5
* 72400310	REMOVE SIGN PANEL - TYPE 1	SQ FT	13	13
* 72900100	METAL POST - TYPE A	FOOT	87.5	87.5
* 78009000	MODIFIED URETHANE PAVEMENT MARKING - LETTERS AND SYMBOLS	SQ FT	15.5	15.5
* 78009004	MODIFIED URETHANE PAVEMENT MARKING - LINE 4"	FOOT	3,891	3,891
* 78009006	MODIFIED URETHANE PAVEMENT MARKING - LINE 6"	FOOT	65	65
* 78009012	MODIFIED URETHANE PAVEMENT MARKING - LINE 12"	FOOT	80	80
78300100	PAVEMENT MARKING REMOVAL	SQ FT	1407	1407

12

**specialty items*

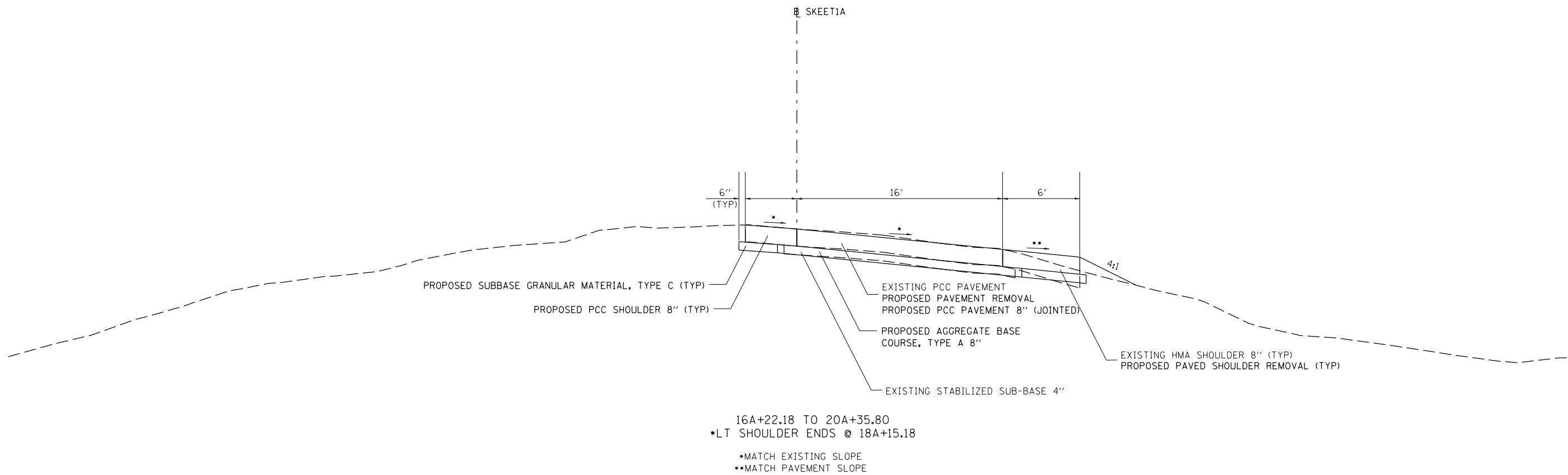
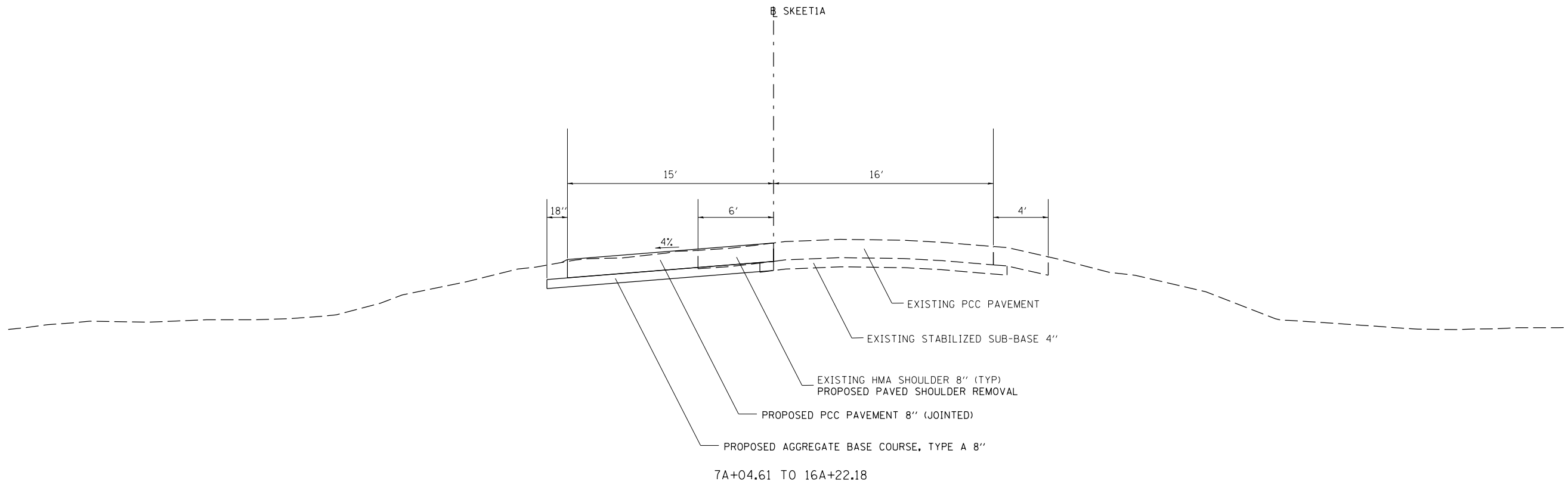
FILE NAME =	USER NAME = eolemn	DESIGNED -	REVISED -	STATE OF ILLINOIS DEPARTMENT OF TRANSPORTATION	SUMMARY OF QUANTITIES	F.A.I. RTE.	SECTION	COUNTY	TOTAL SHEETS	SHEET NO.
pw\11084EBIDINTEG.illinois.gov\PM\DOT\Do	uments\DOT Office\District 9\Projects\78300100\Drawings\78300100-shb-tp-jch.dgn	REVISION	REVISION			64	.	WHITE	27	6
Default	PLOT SCALE = 1/8" = 1' / in.	CHECKED -	REVISED -		SCALE:	SHEET	OF	SHEETS	STA.	TO STA.
	PLOT DATE = 4/4/2016	DATE -	REVISED -							

SUMMARY OF QUANTITIES - CONT

COUNTY:	White
ROUTE:	FAI 64 (I-64),
FUNDING:	100% STATE
LOCATION:	RURAL
TOTAL QUANTITY	ROADWAY 0005

CODE NUMBER	ITEM DESCRIPTION	UNIT	TOTAL QUANTITY	
X0321158	PARK BENCHES	EACH	3	3
X0323117	LANDSCAPING GRAVEL	SQ YD	46	48
X0327618	LANDSCAPING, SPECIAL	LSUM	1	1
X0327680	TRENCH DRAIN	FOOT	8	8
X7010216	TRAFFIC CONTROL AND PROTECTION, (SPECIAL)	LSUM	1	1

5



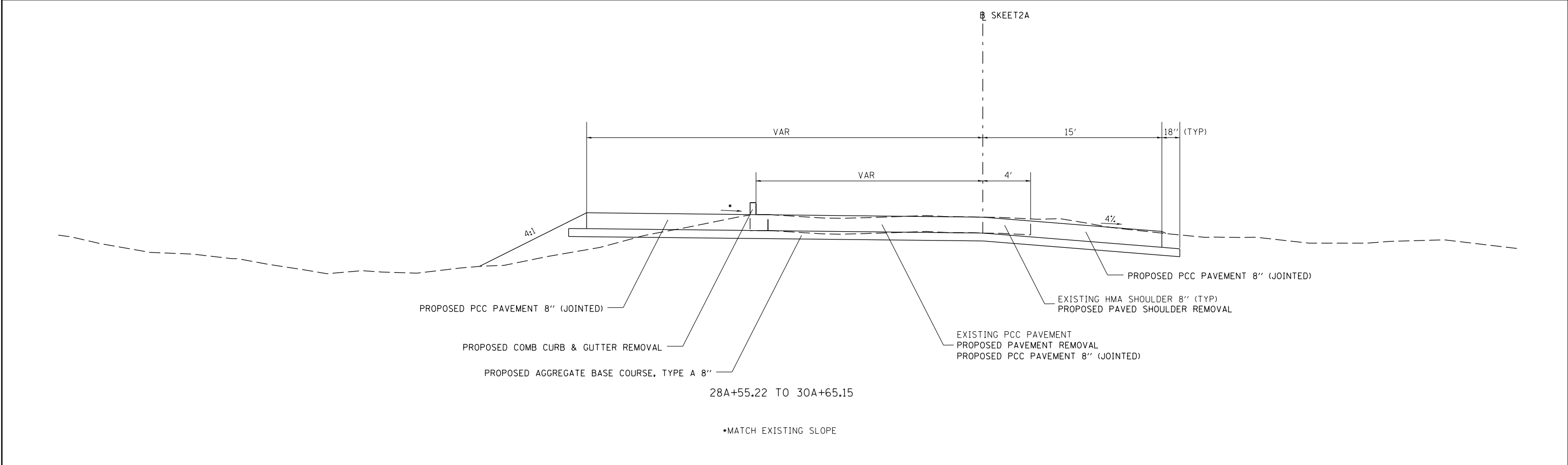
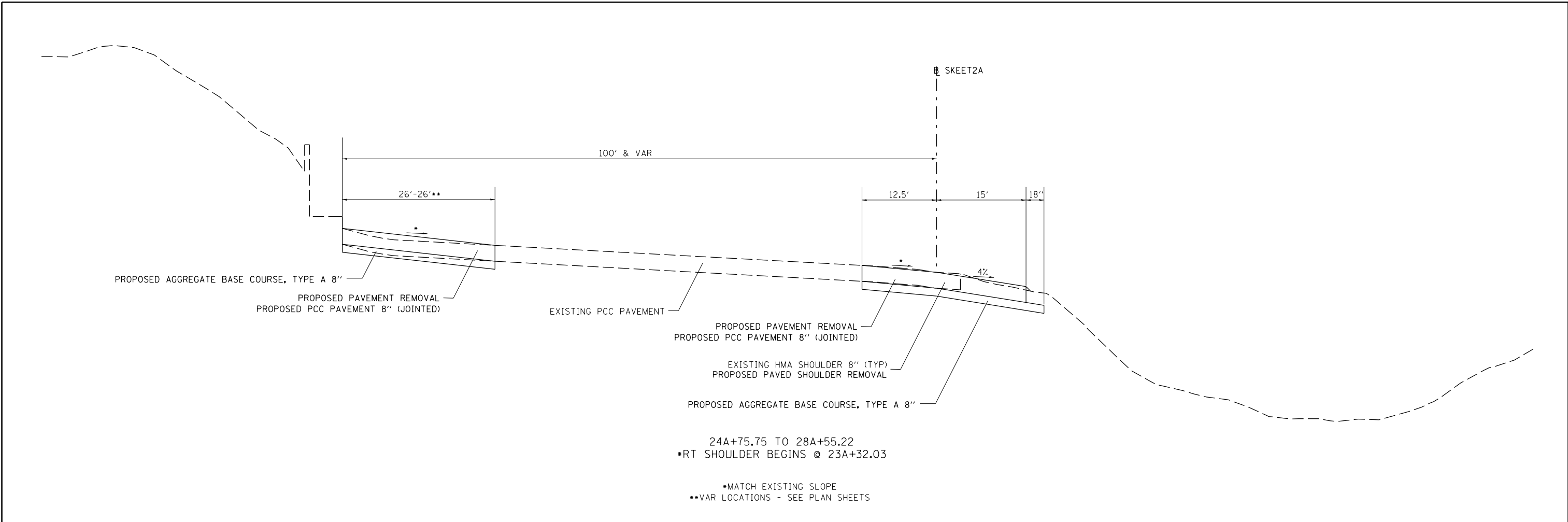
FILE NAME =	USER NAME = colemm	DESIGNED -	REVISED -
p:\11\084EBIDINTEG.illinois.gov\PIWIDOT\Documents\IDOT Offices\District 9\Projects\78393\Drawings\CAD\Sheets\78393-shb-typ.sch.dwg		DRAWN -	REVISED -
Default	PLOT SCALE = 100.0000' / in.	CHECKED -	REVISED -
	PLOT DATE = 4/4/2016	DATE -	REVISED -

**STATE OF ILLINOIS
DEPARTMENT OF TRANSPORTATION**

TYPICAL SECTIONS

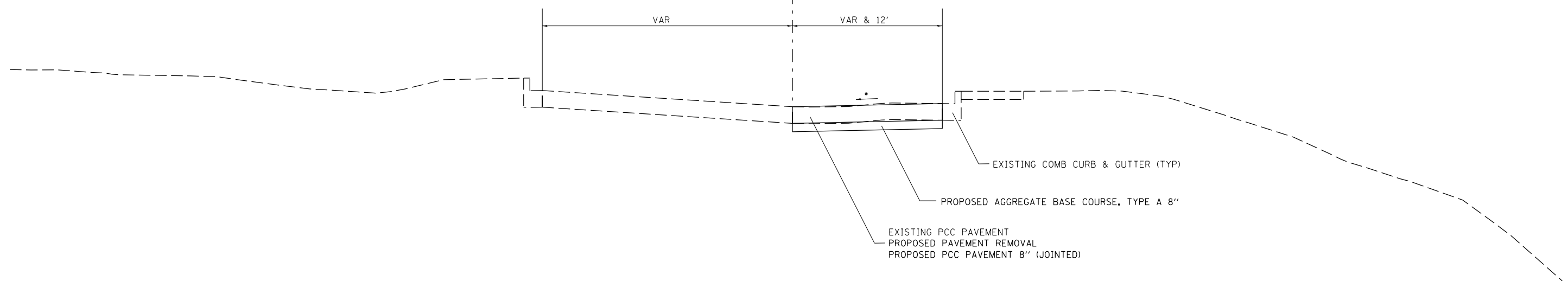
SCALE: SHEET OF SHEETS STA. TO STA.

F.A.I. RTE.	SECTION	COUNTY	TOTAL SHEETS	SHEET NO.
64	*	WHITE	27	8
CONTRACT NO. 78393				



FILE NAME =	USER NAME = colemm	DESIGNED -	REVISED -	STATE OF ILLINOIS DEPARTMENT OF TRANSPORTATION	TYPICAL SECTIONS				F.A.I. RTE.	SECTION	COUNTY	TOTAL SHEETS	SHEET NO.
pw:\IL\084EBIDINTEG.illinois.gov\PI\DOT\Documents\DOT Offices\District 9\Projects\78393\Drawings\CAD\Sheets\78393-shb-typ.sch.dwg		DRAWN	REVISED		64	*	WHITE	27	9				
Default	PLOT SCALE = 100.0000' / in.	CHECKED -	REVISED -		SCALE: SHEET OF SHEETS STA. TO STA.				CONTRACT NO. 78393				
	PLOT DATE = 4/4/2016	DATE -	REVISED -		ILLINOIS FED. AID PROJECT				*D9 SKEETER MTN REST AREA 2014-1				

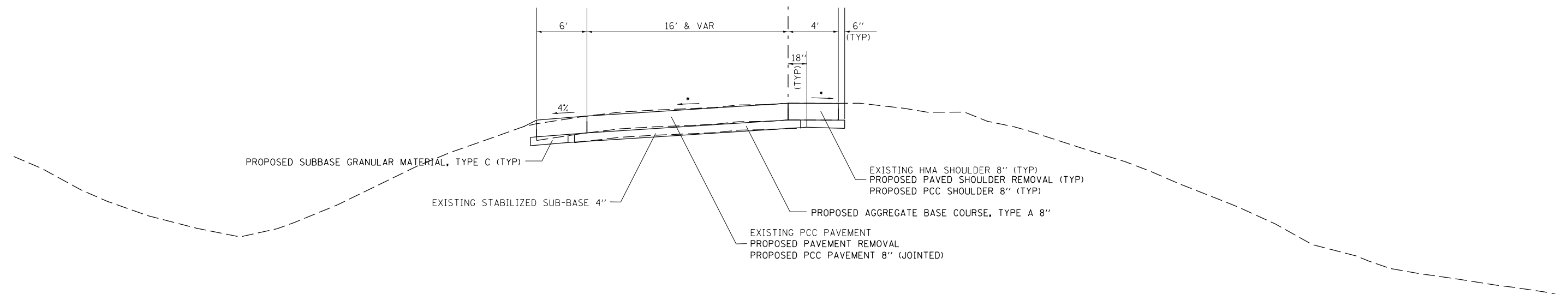
SKEET2B



24B+77.09 TO 26B+57.37

•MATCH EXISTING SLOPE

SKEET2B



28B+98.48 TO 32B+62.51
30A+65.15 TO 31A+74.55

FILE NAME =	USER NAME = colemm	DESIGNED -	REVISED -
p:\11\084EBIDINTEG.illinois.gov\PIWIDOT\Documents\IDOT Offices\District 9\Projects\78393\Drawings\CAD\Sheets\78393-shb-tp-sch-tp-elements.dgn		DRAWN -	REVISED -
Default	PLOT SCALE = 100.0000' / 1in.	CHECKED -	REVISED -
	PLOT DATE = 4/4/2016	DATE -	REVISED -

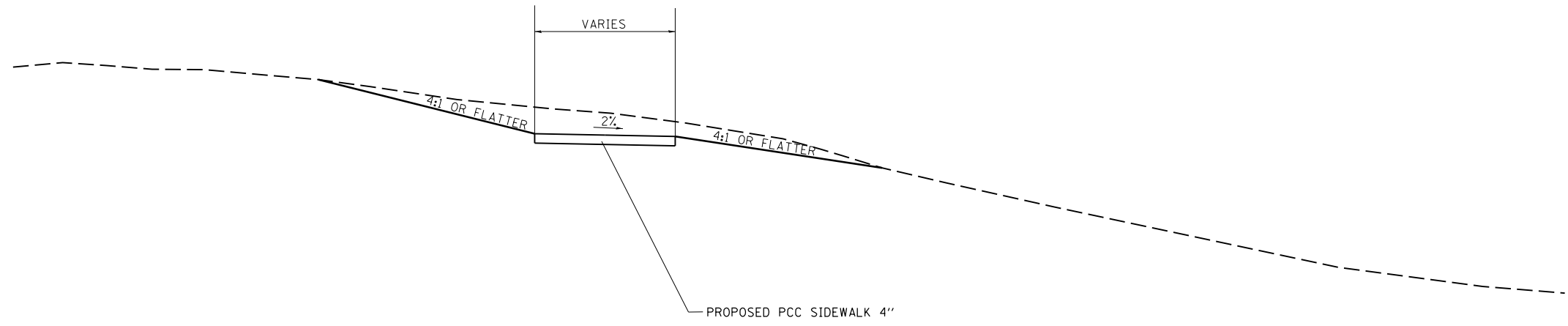
**STATE OF ILLINOIS
DEPARTMENT OF TRANSPORTATION**

TYPICAL SECTIONS

SCALE:	SHEET	OF	SHEETS	STA.	TO STA.
--------	-------	----	--------	------	---------

F.A.I. RE.	SECTION	COUNTY	TOTAL SHEETS	SHEET NO.
64	•	WHITE	27	10
ILLINOIS FED. AID PROJECT			CONTRACT NO. 78393	

•D9 SKEETER MTN REST AREA 2014-1



LOCATIONS SHOWN ON PLANS

FILE NAME =	USER NAME = colemm	DESIGNED -	REVISED -	STATE OF ILLINOIS DEPARTMENT OF TRANSPORTATION	SIDEWALK TYPICAL SECTION				F.A.I. RTE.	SECTION	COUNTY	TOTAL SHEETS	SHEET NO.
p:\11084EBIDINTEG.illinois.gov\PIWIDOT\Documents\DOT Offices\District 9\Projects\78393\Drawings\CAD\Drawings\78393-shb-typ.sch.dwg		DRAWN	REVISED		64	•	WHITE	27	11				
Default	PLOT SCALE = 100.0000' / in.	CHECKED -	REVISED -						CONTRACT NO. 78393				
	PLOT DATE = 4/4/2016	DATE -	REVISED -		SCALE:	SHEET OF SHEETS	STA. TO STA.	<small>ILLINOIS FED. AID PROJECT</small>					

SIDEWALK & CURB AND GUTTER SCHEDULE

LOCATION				PCC SIDEWALK 4 INCH	SIDEWALK REMOVAL	COMB CONC CURB & GUTTER, TY B-6.06	COMB CURB AND GUTTER REMOVAL	DETECTABLE WARNINGS	
STA	TO	STA	OFFSET	SQ FT	SQ FT	FT	FT	SQ FT	
A	22+37.17	TO	22+86.28	1.46' LT	255.5	256	0.0	0	
A	28+54.95	TO	29+93.35	LT	0.0	0	0.0	153	
B	22+35.39	TO	22+47.55	47.15' LT	95.0	92	0.0	0	
B	22+86.53	TO	22+95.33	55.36' LT	24.0	22	0.0	0	
B	23+45.72	TO	23+89.56	50.8' RT	223.0	223	45.0	45	
SWNEW1	0+00	TO	2+59.36	20.33' LT	3,121.0	2,909	68.3	68	
B	25+60.47	TO	25+68.22	13.32' RT	165.0	165	18.0	18	
B	27+42.58	TO	27+50.78	47.81' LT	65.5	64	0.0	0	
B	27+75.40	TO	27+83.61	47.89' LT	65.5	64	0.0	0	
PATH	0+00	TO	2+01.04		1,101.2	0	0.0	0	
TOTALS					5,115.7	3,795	131.3	284	41.5

PAVEMENT & SHOULDER SCHEDULE

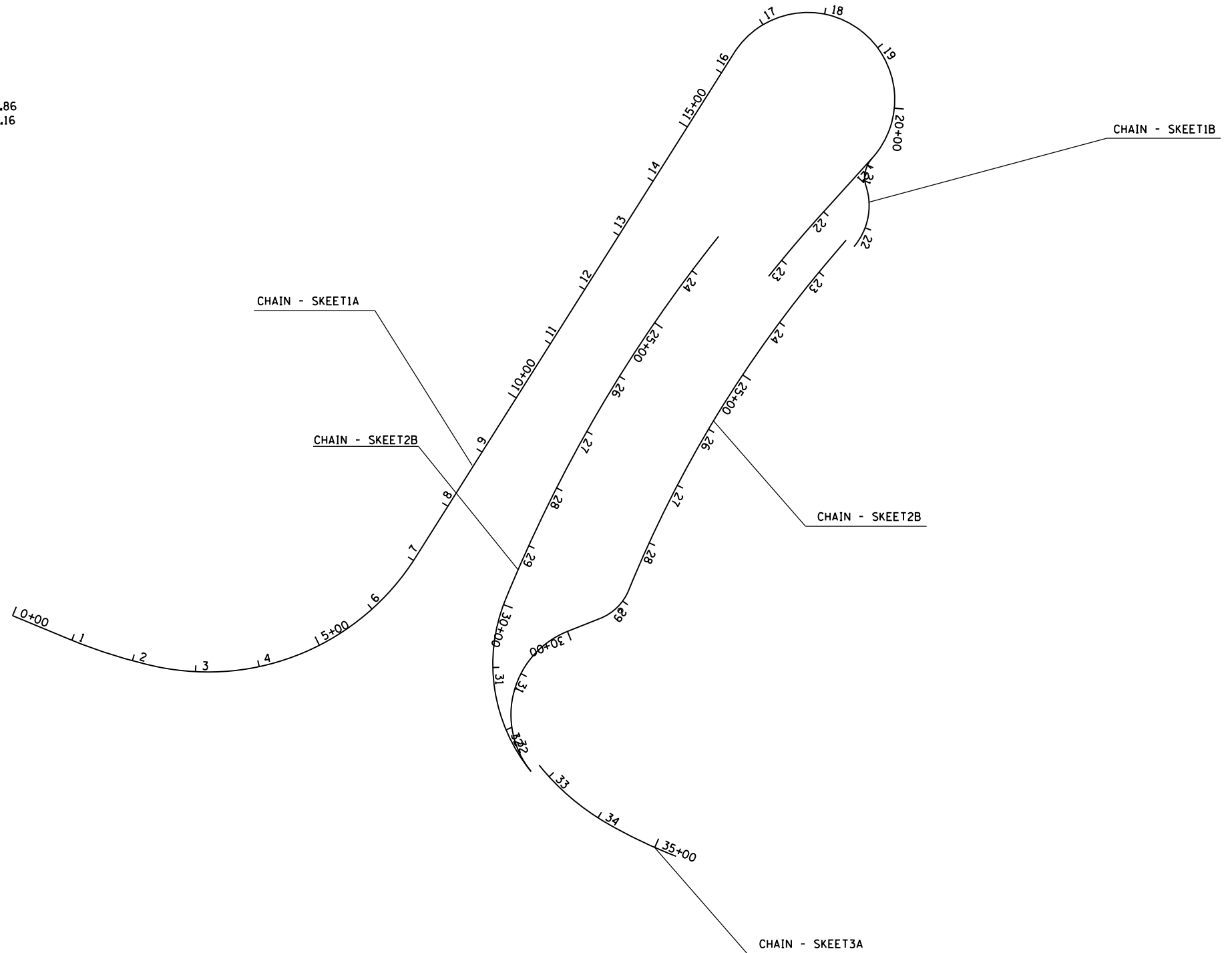
LOCATION				PCC PVT 8" (JOINTED)	PAVEMENT REMOVAL	PCC SHOULDERS 8"	PAVED SHOULDER REMOVAL	AGG BASE COURSE, TY A 8"	SUBBASE GRAN MAT, TY C	TIE BARS 3/4"	DOWEL BARS 1 1/2"	
STA	TO	STA	OFFSET	SQ YD	SQ YD	SQ YD	SQ YD	SQ YD	TON	EACH	EACH	
A	7+04.61	TO	16+22.18	LT	1,530	0	0	561	1,683	0	367	0
A	16+22.18	TO	20+35.80	RT	736	694	362	326	874	134	77	32
A	24+36.64	TO	24+93.64	75' LT	165	165	0	0	165	0	66	0
A	25+56.65	TO	26+14.15	75' LT	167	167	0	0	167	0	67	0
A	27+32.72	TO	27+70.72	52.5' LT	106	106	0	0	106	0	50	0
A	23+32.03	TO	31+73.61	RT/LT	2,605	1085	106	485	2,814	44	307	12
B	24+77.09	TO	26+57.37	RT	211	211	0	0	211	0	146	0
B	28+98.48	TO	32+62.51	RT/LT	694	697	389	384	772	155	0	32
TOTALS					6,214	3,125	857	1,756	6,792	333	1,080	76

PROP. CURVE SKEET1A1 PI STA. = 1+70.18 $\Delta = 9^\circ 46' 29''$ (LT) D = 6° 59' 00" R = 820.47' T = 70.16' L = 139.97' E = 2.99' e = ----- T.R. = ----- S.E. RUN = ----- P.C. STA. = 1+00.03 P.T. STA. = 2+40.00	PROP. CURVE SKEET1A2 PI STA. = 5+05.93 $\Delta = 69^\circ 41' 30''$ (LT) D = 15° 00' 00" R = 381.97' T = 265.93' L = 464.61' E = 83.45' e = ----- T.R. = ----- S.E. RUN = ----- P.C. STA. = 2+40.00 P.T. STA. = 7+04.61	PROP. CURVE SKEET1A3 PI STA. = 17+84.50 $\Delta = 94^\circ 57' 36''$ (RT) D = 42° 07' 44" R = 136.00' T = 148.31' L = 225.40' E = 65.23' e = ----- T.R. = ----- S.E. RUN = ----- P.C. STA. = 16+36.18 P.T. STA. = 18+61.59	PROP. CURVE SKEET1A4 PI STA. = 20+09.89 $\Delta = 94^\circ 57' 17''$ (RT) D = 42° 07' 44" R = 136.00' T = 148.30' L = 225.39' E = 65.22' e = ----- T.R. = ----- S.E. RUN = ----- P.C. STA. = 18+61.59 P.T. STA. = 20+86.98	PROP. CURVE SKEET1A5 PI STA. = 22+64.24 $\Delta = 3^\circ 32' 44''$ (LT) D = 2° 36' 51" R = 2,191.83' T = 67.84' L = 135.63' E = 1.05' e = ----- T.R. = ----- S.E. RUN = ----- P.C. STA. = 21+96.40 P.T. STA. = 23+32.03
--	--	---	---	---

PROP. CURVE SKEET1B1 PI STA. = 21+12.96 $\Delta = 59^\circ 59' 33''$ (LT) D = 127° 19' 26" R = 45.00' T = 25.98' L = 47.12' E = 6.96' e = ----- T.R. = ----- S.E. RUN = ----- P.C. STA. = 20+86.98 P.T. STA. = 21+34.10	PROP. CURVE SKEET1B2 PI STA. = 21+89.11 $\Delta = 58^\circ 17' 45''$ (RT) D = 58° 04' 54" R = 98.65' T = 55.01' L = 100.37' E = 14.30' e = ----- T.R. = ----- S.E. RUN = ----- P.C. STA. = 21+34.10 P.T. STA. = 22+34.47	PROP. CURVE SKEET2A1 PI STA. = 26+65.27 $\Delta = 16^\circ 32' 45''$ (LT) D = 2° 30' 00" R = 98.65' T = 333.24' L = 661.83' E = 24.10' e = ----- T.R. = ----- S.E. RUN = ----- P.C. STA. = 23+32.03 P.T. STA. = 29+93.86	PROP. CURVE SKEET2A2 PI STA. = 31+50.05 $\Delta = 61^\circ 00' 00''$ (LT) D = 21° 36' 29" R = 265.16' T = 156.19' L = 282.30' E = 42.58' e = ----- T.R. = ----- S.E. RUN = ----- P.C. STA. = 29+93.86 P.T. STA. = 32+76.16
--	---	---	---

PROP. CURVE SKEET2B1 PI STA. = 25+78.40 $\Delta = 18^\circ 17' 17''$ (LT) D = 3° 00' 00" R = 1,909.86' T = 307.41' L = 609.60' E = 24.58' e = ----- T.R. = ----- S.E. RUN = ----- P.C. STA. = 22+70.98 P.T. STA. = 28+80.58	PROP. CURVE SKEET2B2 PI STA. = 29+14.87 $\Delta = 46^\circ 16' 38''$ (RT) D = 71° 24' 18" R = 80.24' T = 34.29' L = 64.81' E = 7.02' e = ----- T.R. = ----- S.E. RUN = ----- P.C. STA. = 28+80.58 P.T. STA. = 29+45.39	PROP. CURVE SKEET2B3 PI STA. = 31+92.36 $\Delta = 108^\circ 59' 39''$ (LT) D = 40° 52' 49" R = 140.16' T = 196.47' L = 266.62' E = 101.18' e = ----- T.R. = ----- S.E. RUN = ----- P.C. STA. = 29+95.89 P.T. STA. = 32+62.51
--	---	---

PROP. CURVE SKEET3A1 PI STA. = 33+46.95 $\Delta = 21^\circ 00' 00''$ (LT) D = 15° 00' 00" R = 381.97' T = 70.79' L = 140.00' E = 6.51' e = ----- T.R. = ----- S.E. RUN = ----- P.C. STA. = 32+76.16 P.T. STA. = 34+16.16	PROP. CURVE SKEET3A2 PI STA. = 34+76.29 $\Delta = 8^\circ 59' 59''$ (LT) D = 7° 29' 57" R = 764.02' T = 60.13' L = 120.01' E = 2.36' e = ----- T.R. = ----- S.E. RUN = ----- P.C. STA. = 34+16.16 P.T. STA. = 35+36.17
---	---



FILE NAME =	USER NAME = colemm	DESIGNED -	REVISED -
p:\1\084EBIDINTEG\Illinois.gov\PI\DOT\Documents\DOT Offices\District 9\Projects\78393\Drawings\CAD\Sheets\78393-shb-tp-sch-04-16-16.dgn		CHECKED -	REVISED -
Default	PLOT DATE = 4/4/2016	DATE -	REVISED -

**STATE OF ILLINOIS
DEPARTMENT OF TRANSPORTATION**

**GEOPAK ELEMENT IDENTIFICATION
ALIGNMENTS**

SCALE: SHEET OF SHEETS STA. TO STA.

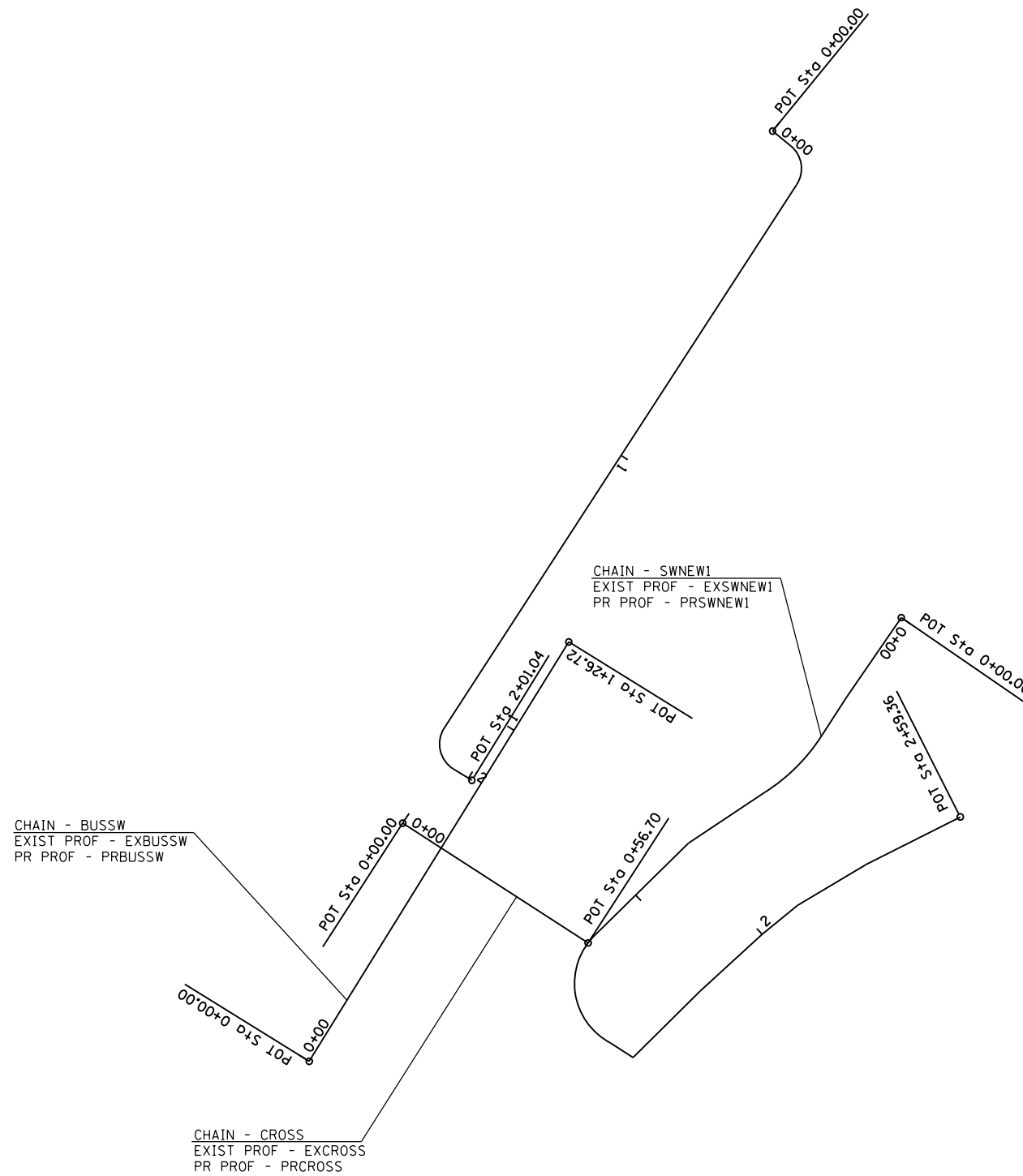
F.A.I. RTE.	SECTION	COUNTY	TOTAL SHEETS	SHEET NO.
64	*	WHITE	27	14
ILLINOIS FED. AID PROJECT			CONTRACT NO. 78393	

EXIST. CURVE SWNEW11
 PI STA. = 0+47.32
 $\Delta = 24^\circ 59' 18''$ (RT)
 D = 120° 37' 22"
 R = 47.50'
 T = 10.53'
 L = 20.72'
 E = 1.15'
 e = -----
 T.R. = -----
 S.E. RUN = -----
 P.C. STA. = 0+36.80
 P.T. STA. = 0+57.51

EXIST. CURVE SWNEW12
 PI STA. = 1+38.72
 $\Delta = 109^\circ 20' 40''$ (LT)
 D = 332° 23' 52"
 R = 17.24'
 T = 24.32'
 L = 32.90'
 E = 12.57'
 e = -----
 T.R. = -----
 S.E. RUN = -----
 P.C. STA. = 1+14.40
 P.T. STA. = 1+47.29

PROP. CURVE PATH1
 PI STA. = 0+12.76
 $\Delta = 83^\circ 39' 43''$ (RT)
 D = 763° 56' 37"
 R = 7.50'
 T = 6.71'
 L = 10.95'
 E = 2.57'
 e = -----
 T.R. = -----
 S.E. RUN = -----
 P.C. STA. = 0+06.05
 P.T. STA. = 0+17.00

PROP. CURVE PATH2
 PI STA. = 1+91.19
 $\Delta = 91^\circ 17' 28''$ (LT)
 D = 763° 56' 37"
 R = 7.50'
 T = 7.67'
 L = 11.95'
 E = 3.23'
 e = -----
 T.R. = -----
 S.E. RUN = -----
 P.C. STA. = 1+83.51
 P.T. STA. = 1+95.46



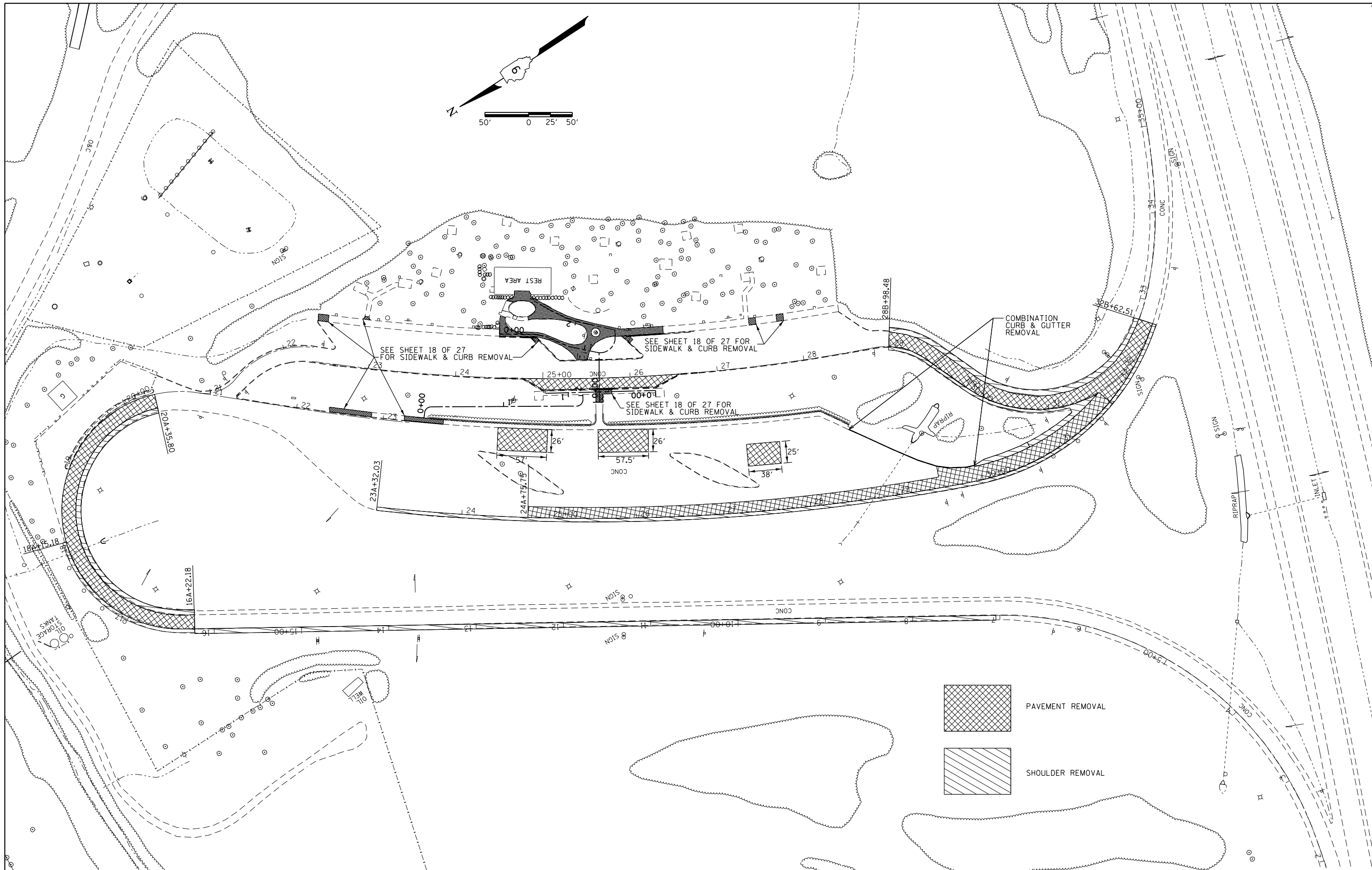
FILE NAME =	USER NAME = colemm	DESIGNED -	REVISED -
p:\11\084EBIDINTEG.illinois.gov\PIWIDOT\Documents\DOT Offices\District 9\Projects\78393\Drawings\CAD\Sheets\78393-shb-tp-sch-tp-elements.dgn		DRAWN -	REVISED -
Default	PLOT SCALE = 40.0000' / in.	CHECKED -	REVISED -
	PLOT DATE = 4/4/2016	DATE -	REVISED -

**STATE OF ILLINOIS
 DEPARTMENT OF TRANSPORTATION**

**GEOPAK ELEMENT IDENTIFICATION
 ALIGNMENTS**

SCALE: SHEET OF SHEETS STA. TO STA.

F.A.I. RTE.	SECTION	COUNTY	TOTAL SHEETS	SHEET NO.
64	*	WHITE	27	15
CONTRACT NO. 78393			ILLINOIS FED. AID PROJECT	



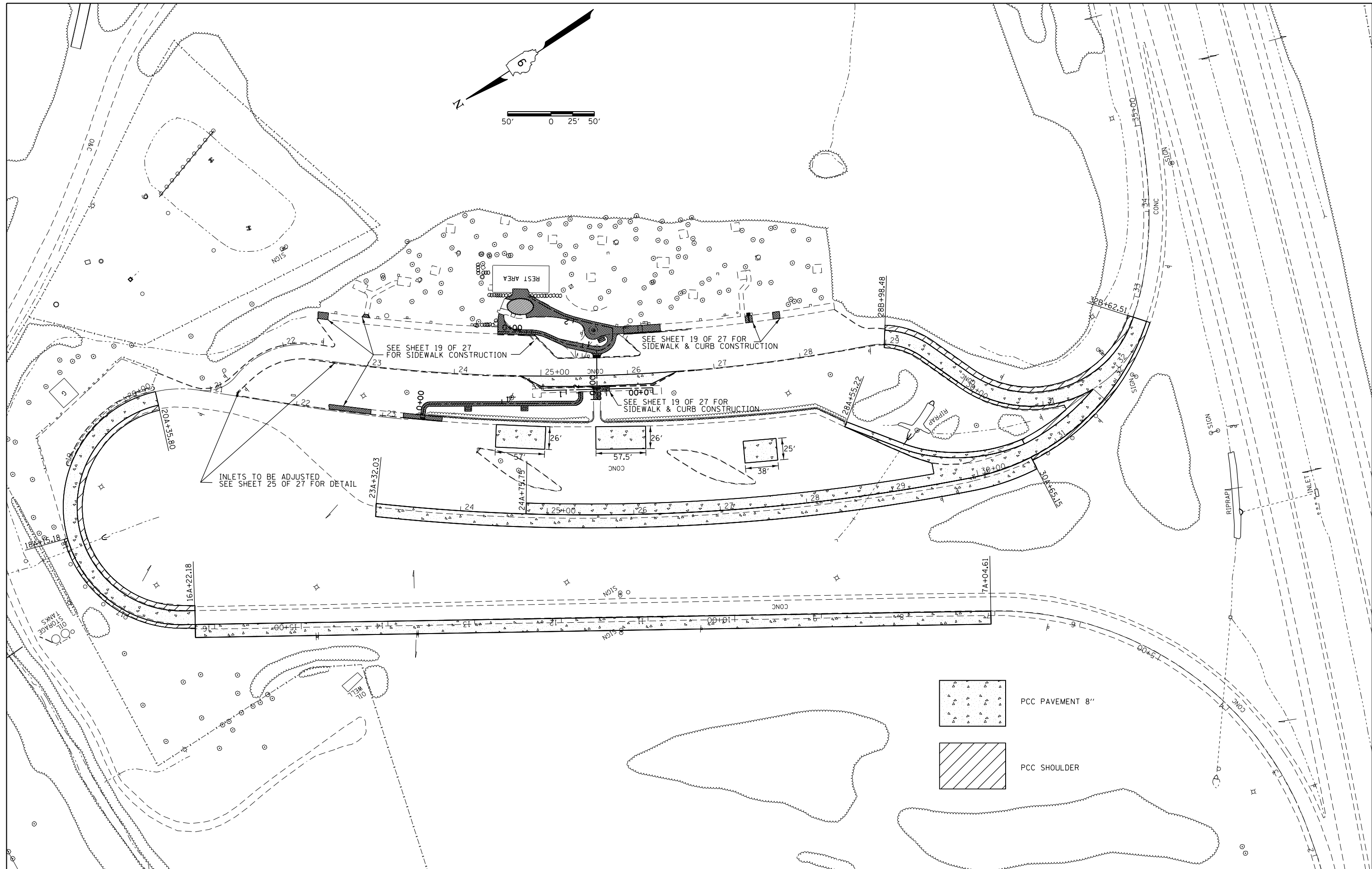
FILE NAME =	USER NAME = rollav	DESIGNED -	REVISED -
p:\11\084EBID\INTEG\illinois.gov\PI\DOT\Documents\DOT Offices\District 9\Projects\78393\DRAWING\CAD\sheet\78393-shr-planr.fcd		DRAWN -	REVISED -
Default	PLOT SCALE = 100.0000' / in.	CHECKED -	REVISED -
	PLOT DATE = 5/3/2016	DATE -	REVISED -

**STATE OF ILLINOIS
DEPARTMENT OF TRANSPORTATION**

**I-64 WB SKEETER MOUNTAIN
REMOVAL PLAN**

SCALE:	SHEET	OF	SHEETS	STA.	TO	STA.
--------	-------	----	--------	------	----	------

F.A.I. RTE.	SECTION	COUNTY	TOTAL SHEETS	SHEET NO.
64	.	WHITE	27	16
CONTRACT NO. 78393			ILLINOIS FED. AID PROJECT	



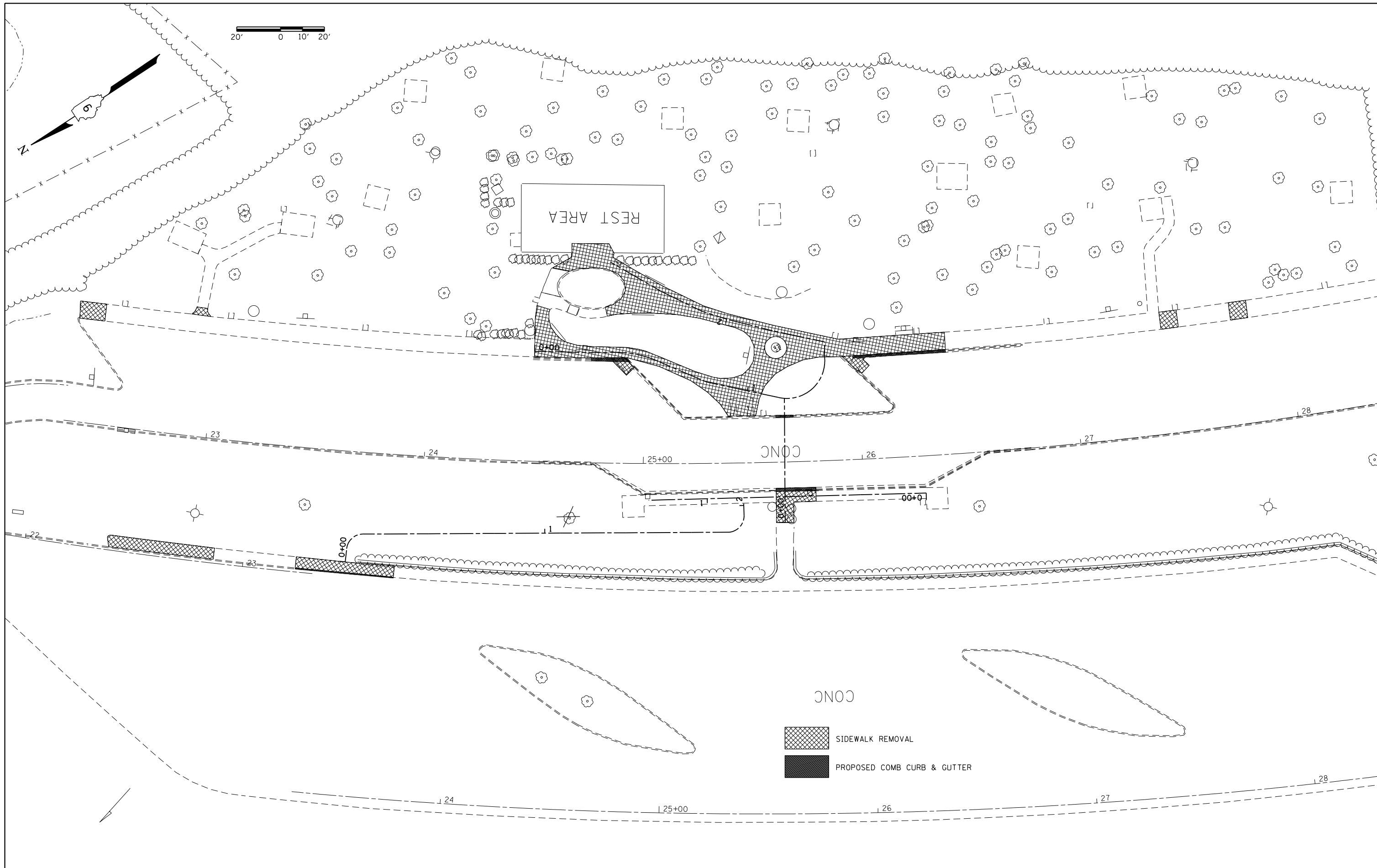
FILE NAME =	USER NAME = rollav	DESIGNED -	REVISED -
p:\11\084EBIDINTEG\illinois.gov\PIWID\Documents\DOT Offices\District 9\Projects\78393\Drawings\CADsheets\78393-shr-planr.fcd		DRAWN -	REVISED -
Default	PLOT SCALE = 100.0000' / in.	CHECKED -	REVISED -
	PLOT DATE = 5/3/2016	DATE -	REVISED -

**STATE OF ILLINOIS
DEPARTMENT OF TRANSPORTATION**

I-64 WB SKEETER MOUNTAIN PROPOSED PLAN			
SCALE:	SHEET	OF SHEETS	STA. TO STA.

F.A.I. RTE.	SECTION	COUNTY	TOTAL SHEETS	SHEET NO.
64	.	WHITE	27	17
CONTRACT NO. 78393				
ILLINOIS FED. AID PROJECT				

•D9 SKEETER MTN REST AREA 2014-1

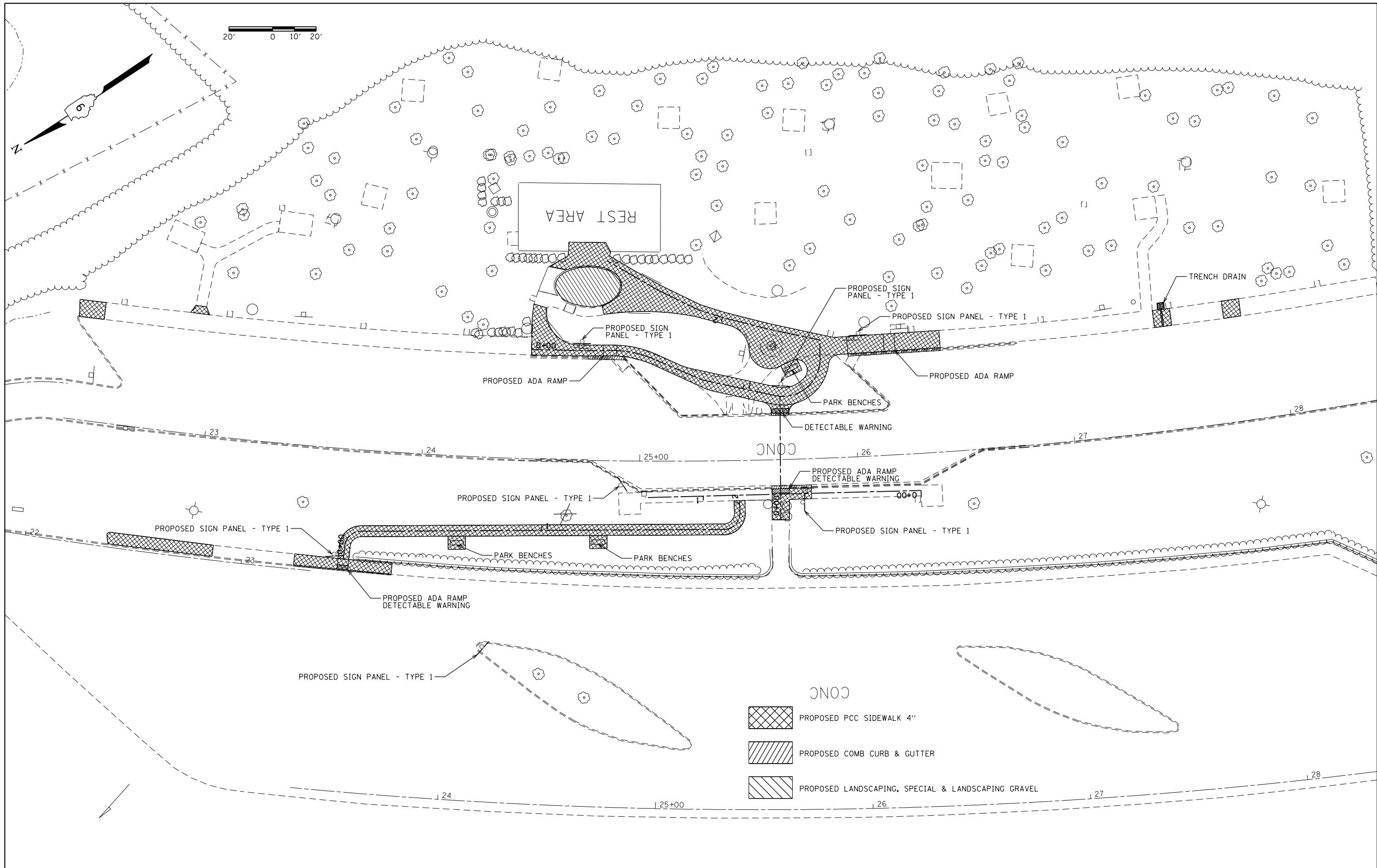


FILE NAME =	USER NAME = rollav	DESIGNED -	REVISED -
pw:\IL\084EBIDINTEG\Illinois.gov\PWIDOT\Documents\DOT Offices\District 9\Projects\78393\Drawings\CAD\Sheets\78393-sht-planr.f.dg		DRAWN -	REVISED -
Default	PLOT SCALE = 40.0000' / in.	CHECKED -	REVISED -
	PLOT DATE = 5/3/2016	DATE -	REVISED -

**STATE OF ILLINOIS
DEPARTMENT OF TRANSPORTATION**

SIDEWALK REMOVAL				
SCALE:	SHEET	OF	SHEETS	STA. TO STA.

F.A.I. RTE.	SECTION	COUNTY	TOTAL SHEETS	SHEET NO.
64	.	WHITE	27	18
CONTRACT NO. 78393				
ILLINOIS FED. AID PROJECT				



FILE NAME =	USER NAME = rollav	DESIGNED -	REVISED -
pw:\IL\084EBIDINTEG\illinois.gov\PIWID\Documents\DOT Offices\District 9\Projects\78393\Drawings\CAD\Sheets\78393-shr-planr.fcd		DRAWN -	REVISED -
Default	PLOT SCALE = 40.0000' / in.	CHECKED -	REVISED -
	PLOT DATE = 5/3/2016	DATE -	REVISED -



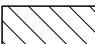
**STATE OF ILLINOIS
DEPARTMENT OF TRANSPORTATION**

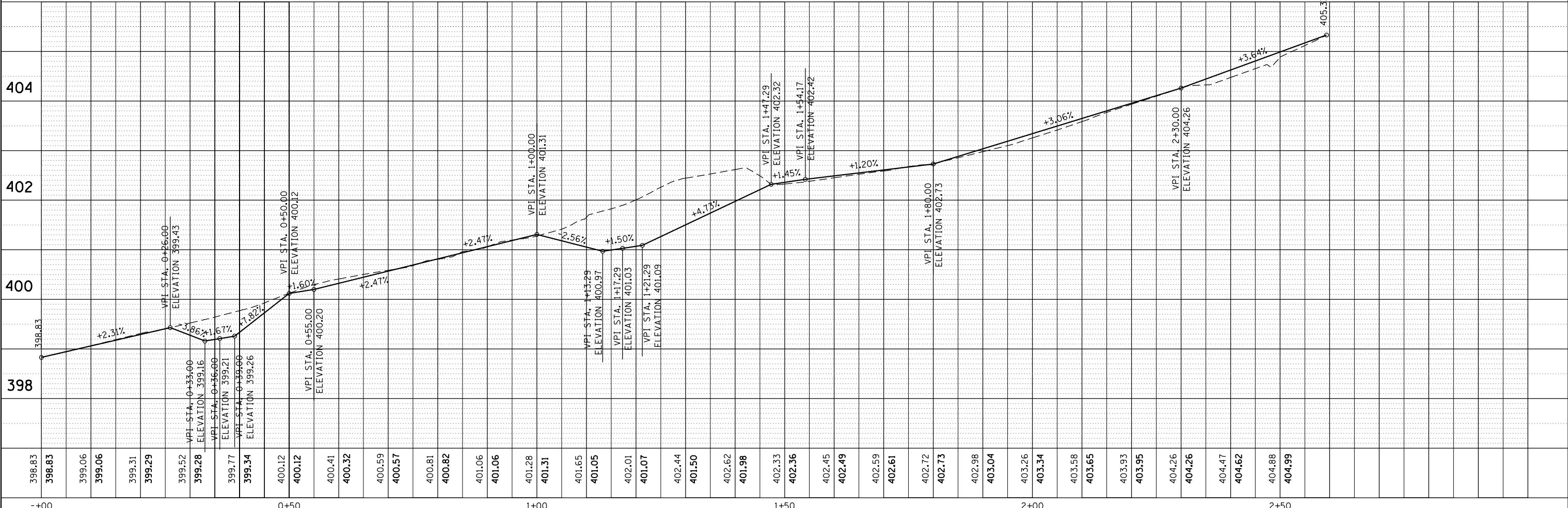
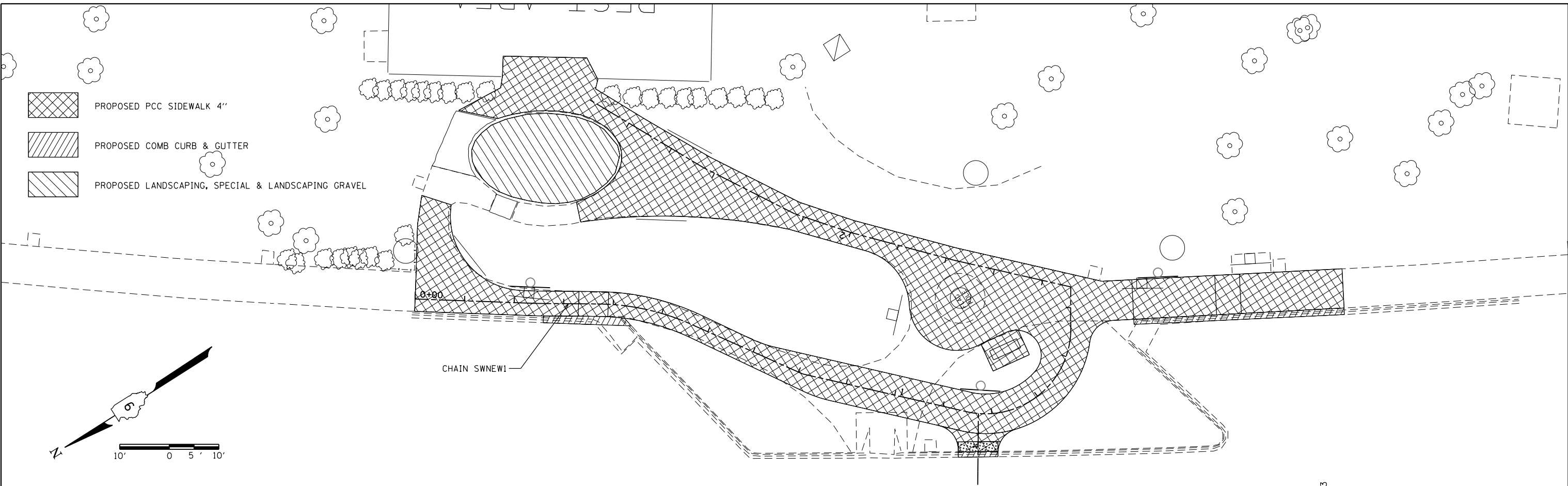
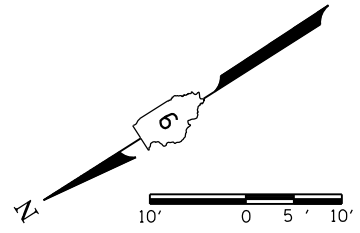
PROPOSED SIDEWALK				
SCALE:	SHEET	OF	SHEETS	STA. TO STA.

F.A.I. RTE.	SECTION	COUNTY	TOTAL SHEETS	SHEET NO.
64	.	WHITE	27	19
CONTRACT NO. 78393				
ILLINOIS FED. AID PROJECT				

PLAN	SURVEYED	DATE
	PLOTTED	
	NOTE BOOK	
	NO.	
	FILE NAME	

PROFILE	SURVEYED	DATE
	GRADES CHECKED	
	STRUCTURE NOTATIONS CHECKED	
	NO.	
	FILE NAME	

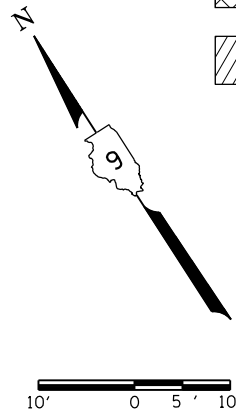
-  PROPOSED PCC SIDEWALK 4"
-  PROPOSED COMB CURB & GUTTER
-  PROPOSED LANDSCAPING, SPECIAL & LANDSCAPING GRAVEL



FILE NAME =	USER NAME = rollav	DESIGNED -	REVISED -	STATE OF ILLINOIS DEPARTMENT OF TRANSPORTATION	PLAN & PROFILE CHAIN - SWNEW1	F.A.I. RTE.	SECTION	COUNTY	TOTAL SHEETS	SHEET NO.	
Default		CHECKED -	REVISED -			64		WHITE	27	20	
		DATE -	REVISED -			CONTRACT NO. 78393		ILLINOIS FED. AID PROJECT			
						SCALE:	SHEET	OF	SHEETS	STA. 0+00	TO STA. 2+59.36

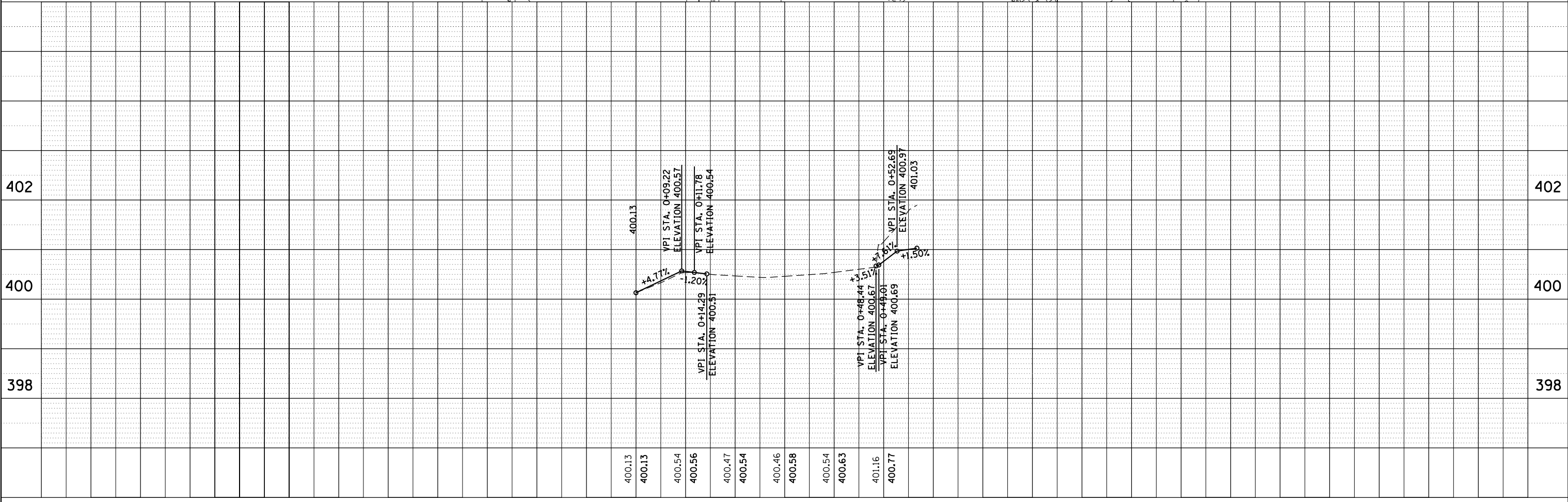
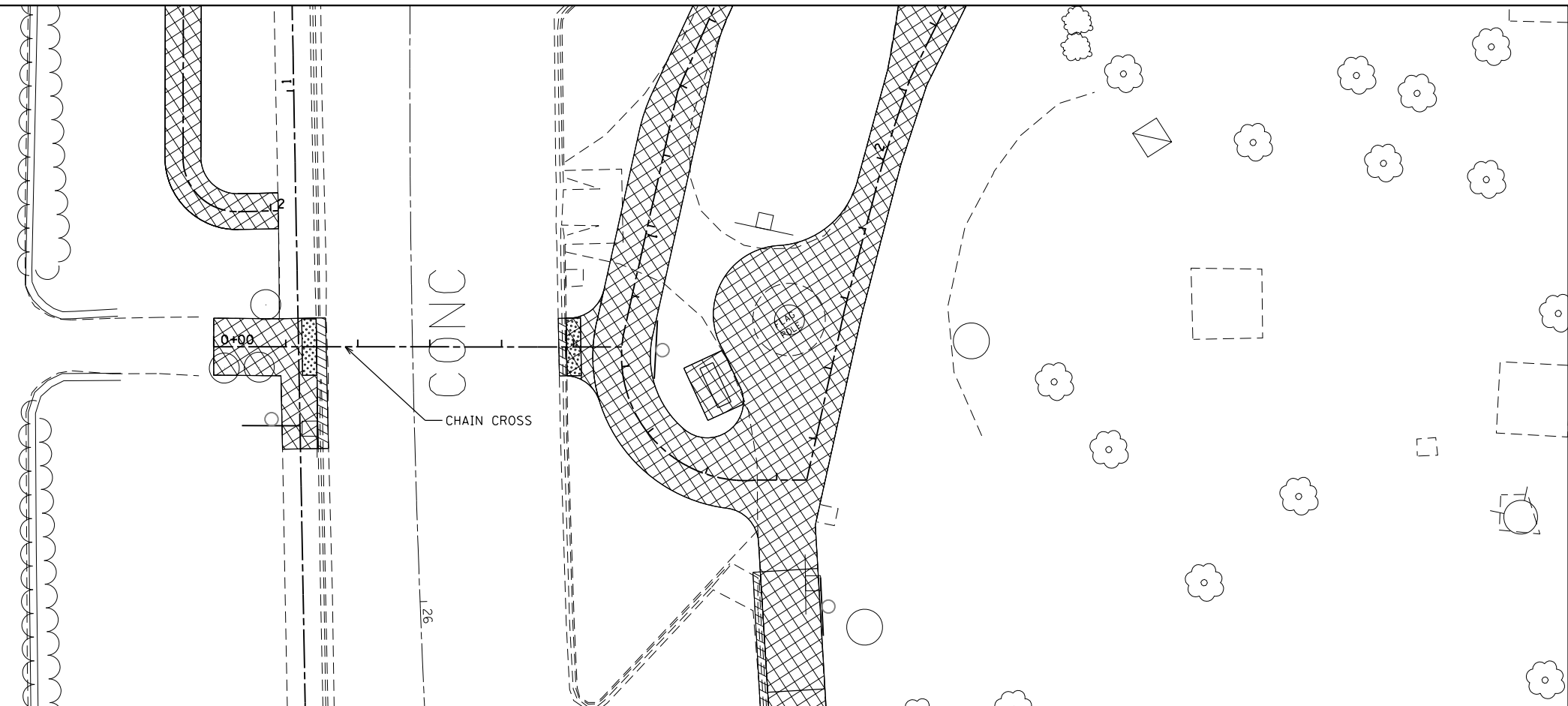
PLAN	SURVEYED	BY	DATE
	PLOTTED		
	NOTE BOOK		
	NO.		
	CHECKED		
	FILE NAME		

PROFILE	SURVEYED	BY	DATE
	PLOTTED		
	NOTE BOOK		
	NO.		
	CHECKED		
	FILE NAME		





- PROPOSED PCC SIDEWALK 4"
- PROPOSED COMB CURB & GUTTER

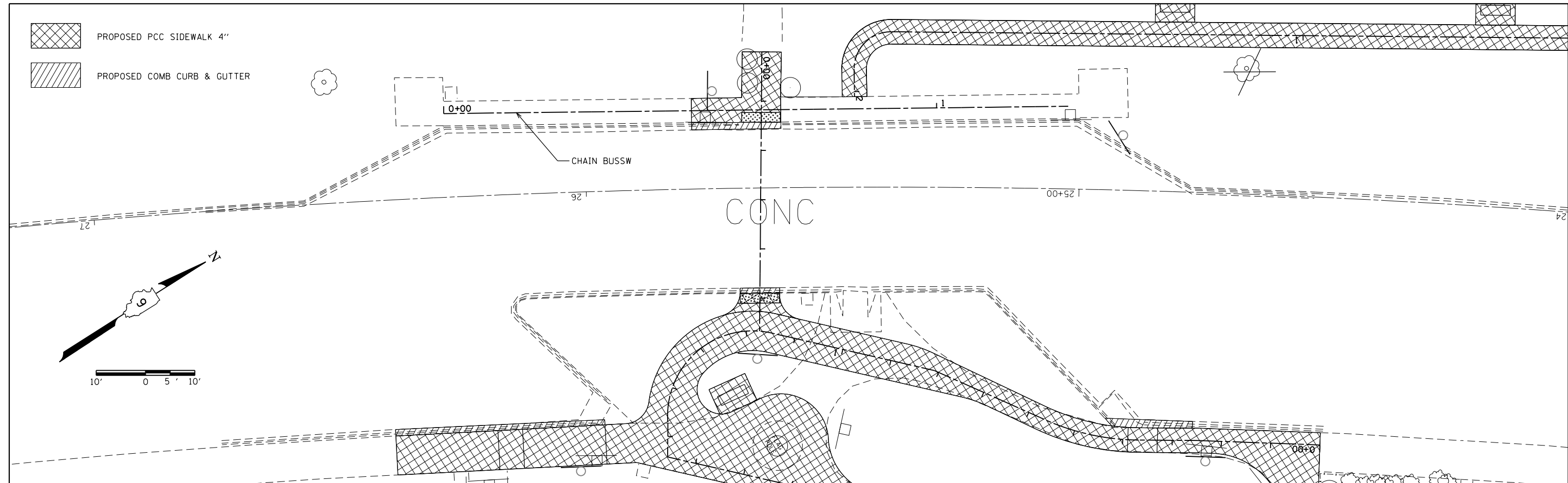
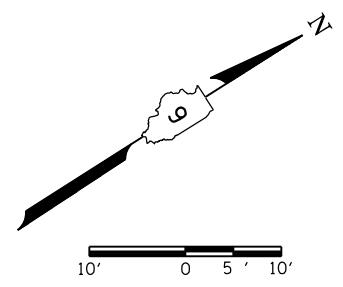
CONC



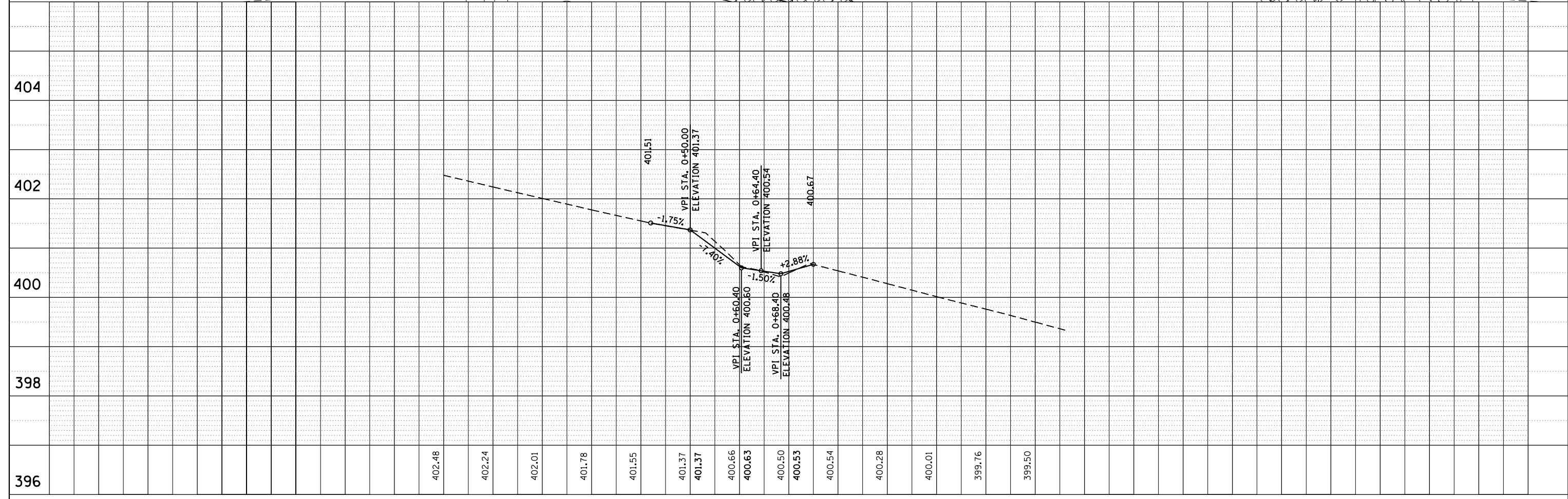
FILE NAME =	USER NAME = rollav	DESIGNED -	REVISED -	STATE OF ILLINOIS DEPARTMENT OF TRANSPORTATION	PLAN & PROFILE CHAIN - CROSS	F.A.I. RTE.	SECTION	COUNTY	TOTAL SHEETS	SHEET NO.	
Default	PLOT SCALE = 20.0000' / in.	CHECKED -	REVISED -			64	•	WHITE	27	21	
	PLOT DATE = 5/3/2016	DATE -	REVISED -			SCALE: SHEET OF SHEETS STA. 0+00 TO STA. 0+56.70		ILLINOIS FED. AID PROJECT			
								CONTRACT NO. 78393			

 PROPOSED PCC SIDEWALK 4"
 PROPOSED COMB CURB & GUTTER

PLAN SURVEYED BY _____ DATE _____
 PLOTTED BY _____
 NOTE BOOK NO. _____
 CHECKED BY _____
 CAD FILE NAME _____



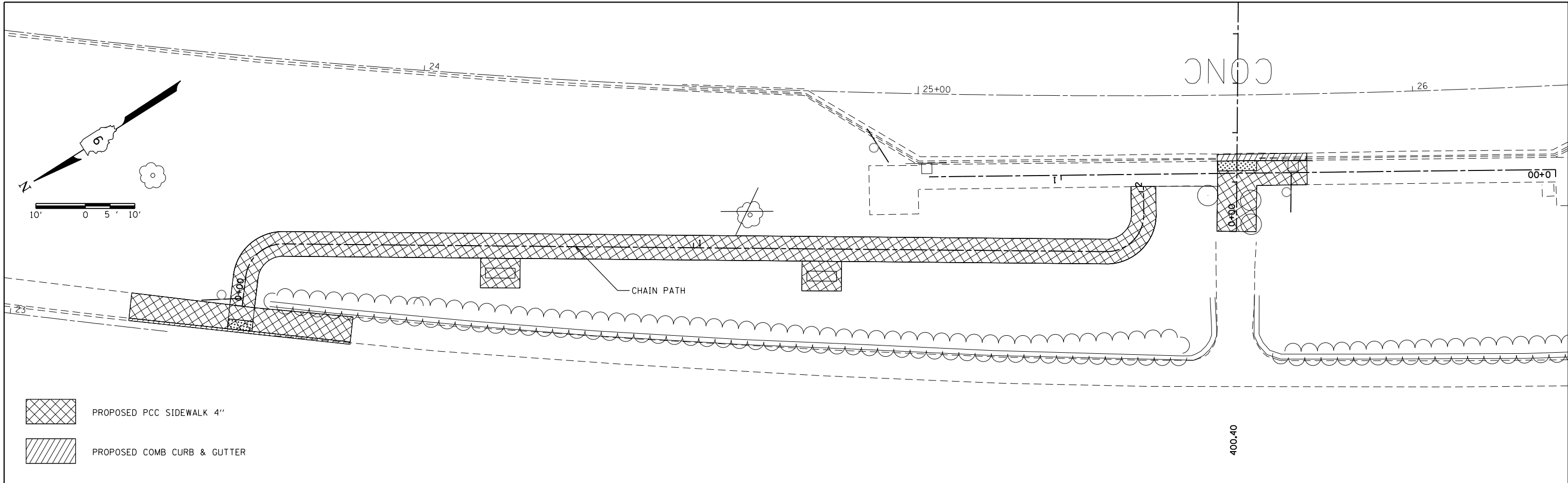
PROFILE SURVEYED BY _____ DATE _____
 PLOTTED BY _____
 NOTE BOOK NO. _____
 GRADES CHECKED BY _____
 STRUCTURE NOTATIONS CHECKED BY _____



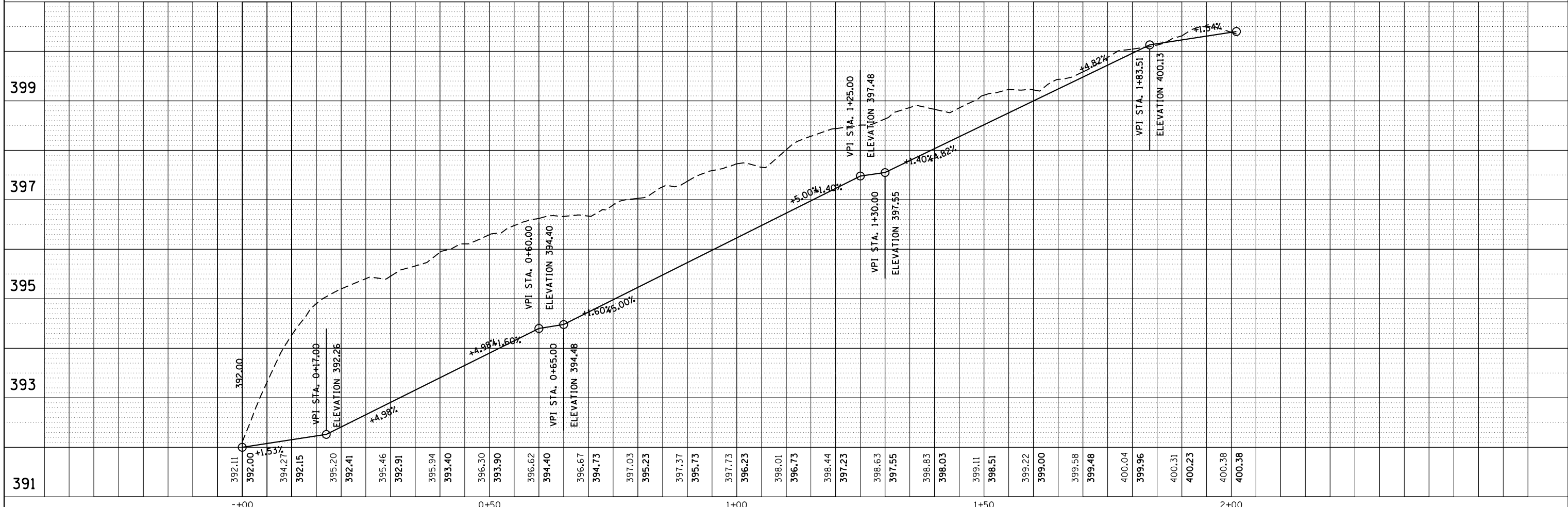
FILE NAME =	USER NAME = rollav	DESIGNED -	REVISED -	STATE OF ILLINOIS DEPARTMENT OF TRANSPORTATION	PLAN & PROFILE CHAIN - BUSSW	F.A.I. RTE.	SECTION	COUNTY	TOTAL SHEETS	SHEET NO.	
Default		CHECKED -	REVISED -			64	•	WHITE	27	22	
		DATE -	REVISED -			CONTRACT NO. 78393		ILLINOIS FED. AID PROJECT			
						SCALE:	SHEET OF SHEETS	STA. 0+00	TO STA. 0+56.70	•D9 SKEETER MTN REST AREA 2014-1	

PLAN	SURVEYED	DATE
	PLOTTED	BY
	ALIGNED	
	CHECKED	
	FILE NAME	
	NO.	

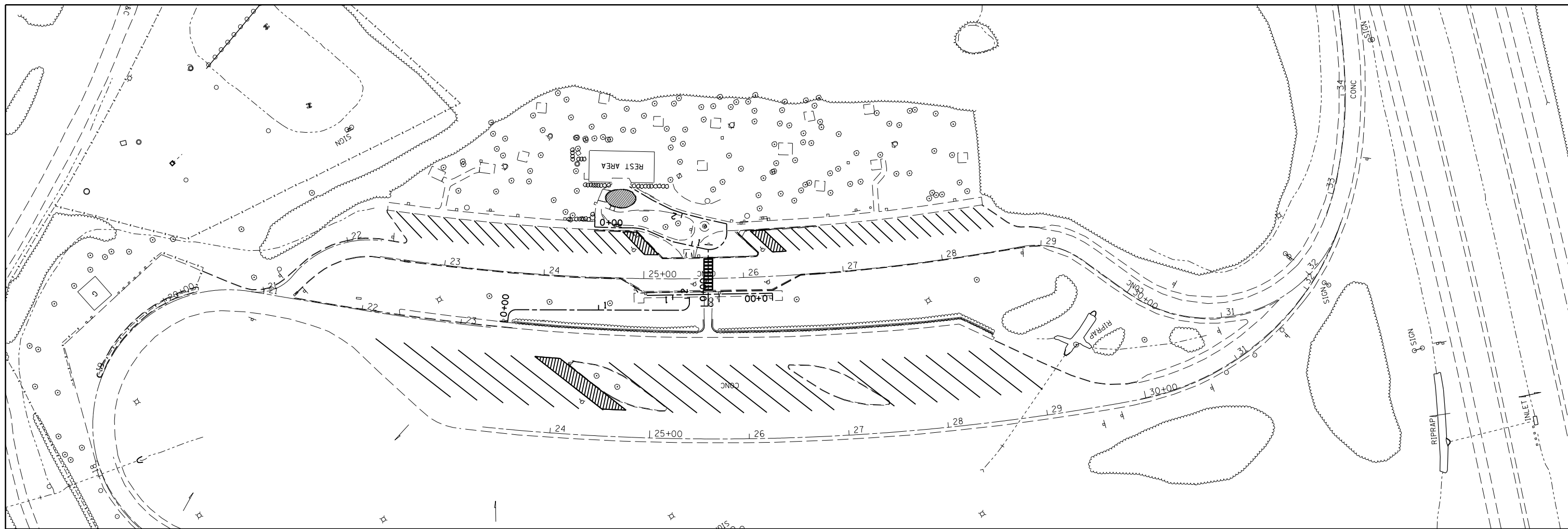
PROFILE	SURVEYED	DATE
	PLOTTED	BY
	GRADES	
	CHECKED	
	STRUCTURE	
	NOTATIONS	
	CHPND	
	NO.	



- PROPOSED PCC SIDEWALK 4"
- PROPOSED COMB CURB & GUTTER



FILE NAME =	USER NAME = rollav	DESIGNED -	REVISOR -	STATE OF ILLINOIS DEPARTMENT OF TRANSPORTATION	PLAN & PROFILE CHAIN - PATH				F.A.I. RTE.	SECTION	COUNTY	TOTAL SHEETS	SHEET NO.
Default		CHECKED -	REVISOR -		SCALE:	SHEET	OF	SHEETS	STA.	TO STA.	WHITE	27	23
		DATE -	REVISOR -						CONTRACT NO. 78393				
									ILLINOIS FED. AID PROJECT				

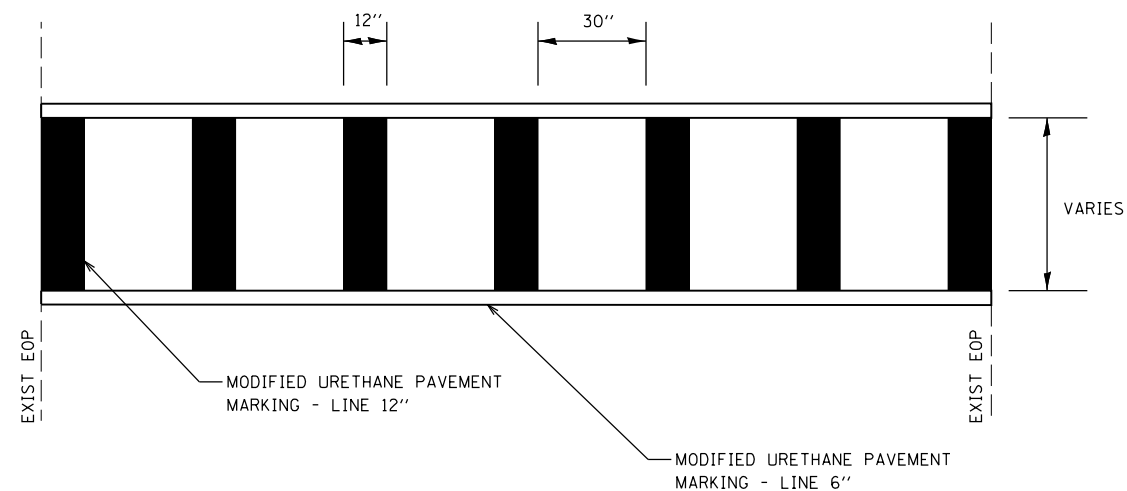
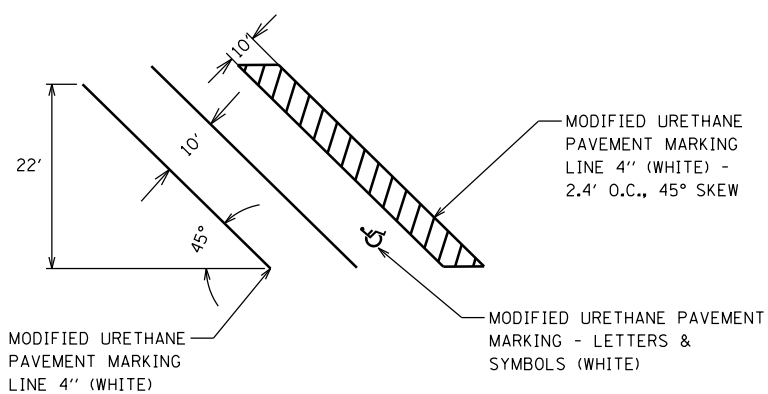
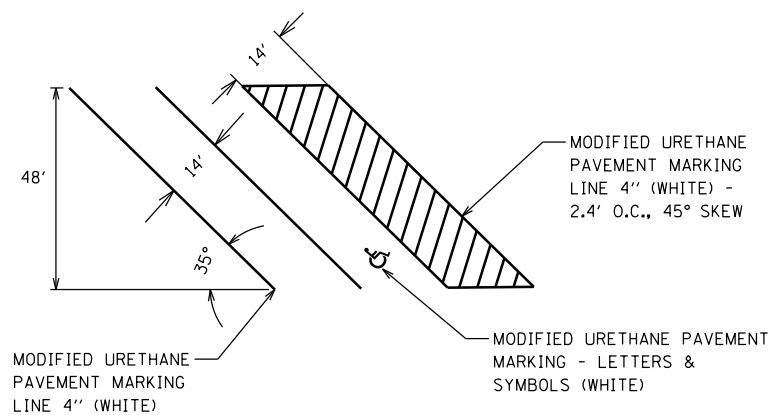


PARKING LOT PAVEMENT MARKING DETAIL

CROSSWALK PAVEMENT MARKING DETAIL

ADA PARKING SPACE PAVEMENT MARKING (TRUCK PARKING LOT)

ADA PARKING SPACE PAVEMENT MARKING (PASSENGER VEHICLE PARKING LOT)



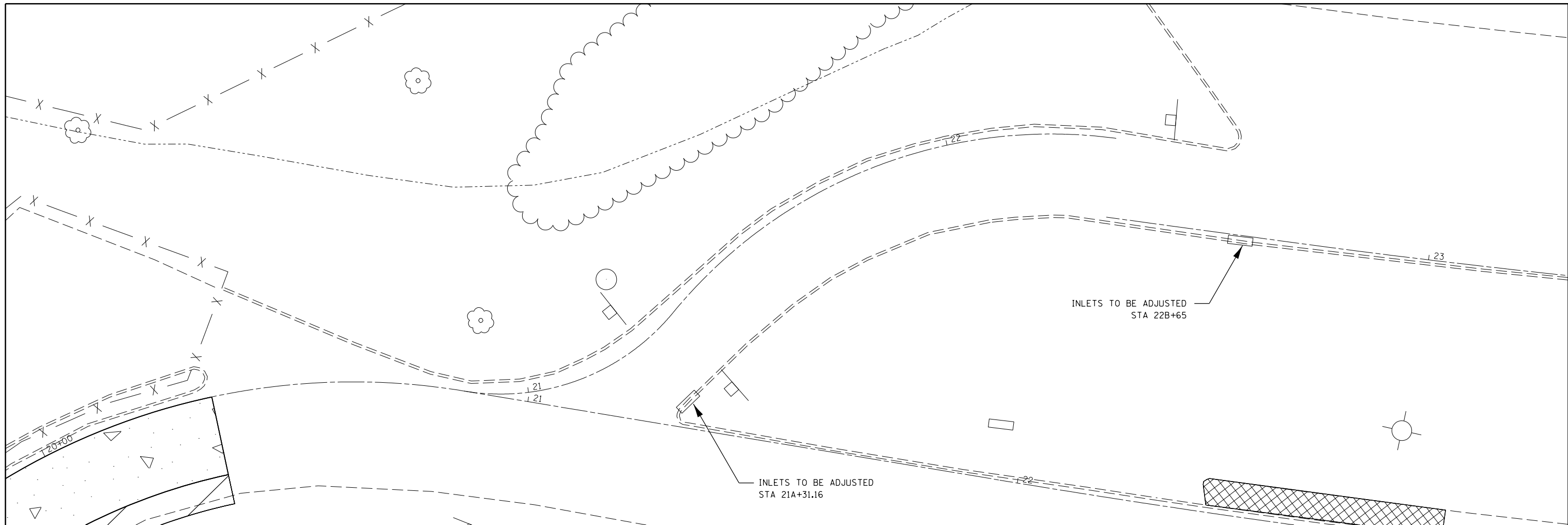
FILE NAME =	USER NAME = colemm	DESIGNED -	REVISED -
p:\11\084EBIDINTEG.illinois.gov\PIWID\Documents\IDOT Offices\District 9\Projects\78393\Drawings\CAD\Drawings\78393-shd-pln-detailed.dwg		DRAWN -	REVISED -
Default	PLOT SCALE = 100.0000' / in.	CHECKED -	REVISED -
	PLOT DATE = 4/4/2016	DATE -	REVISED -

**STATE OF ILLINOIS
DEPARTMENT OF TRANSPORTATION**

PAVEMENT MARKING DETAIL

SCALE: SHEET OF SHEETS STA. TO STA.

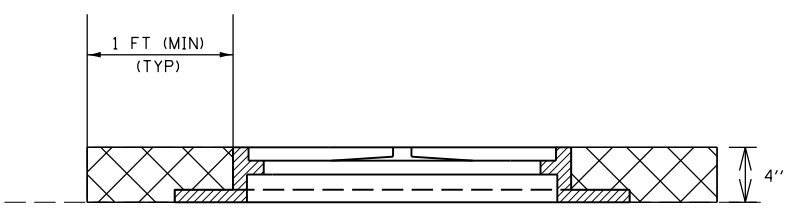
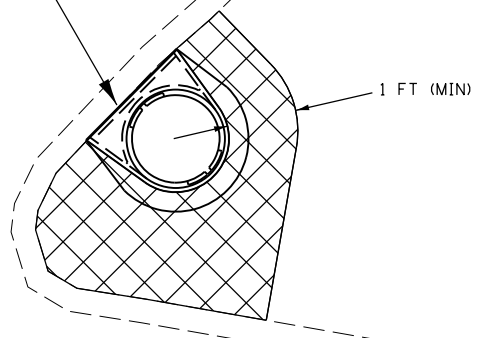
F.A.I. RTE.	SECTION	COUNTY	TOTAL SHEETS	SHEET NO.
64	•	WHITE	27	24
CONTRACT NO. 78393			ILLINOIS FED. AID PROJECT	



INLETS TO BE ADJUSTED
STA 21A+31.16

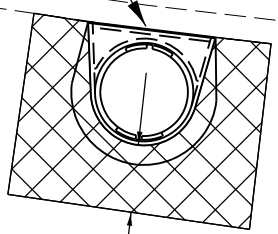
INLETS TO BE ADJUSTED
STA 22B+65

RESET EXISTING TYPE 15 FRAME & LID

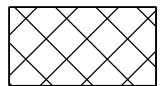


RESET EXISTING TYPE 15 FRAME & LID

RESET EXISTING TYPE 15 FRAME & LID



1 FT (MIN)



CLASS SI CONCRETE

FILE NAME =	USER NAME = colemm	DESIGNED -	REVISED -
p:\11\084EBIDINTEG.illinois.gov\PI\DOT\Documents\DOT Offices\District 9\Projects\78393\Drawings\CAD\Sheets\78393-shd-pln-det.dwg		DRAWN -	REVISED -
Default	PLOT SCALE = 20.0000' / in.	CHECKED -	REVISED -
	PLOT DATE = 4/4/2016	DATE -	REVISED -

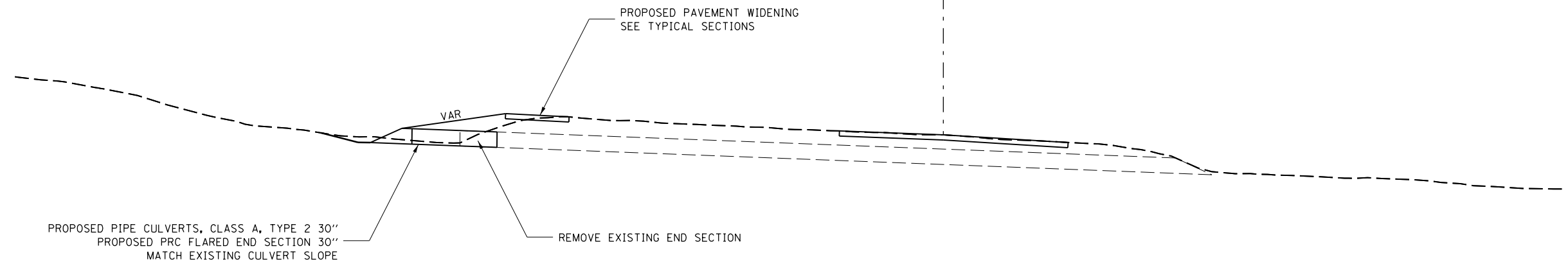
**STATE OF ILLINOIS
DEPARTMENT OF TRANSPORTATION**

INLETS TO BE ADJUSTED

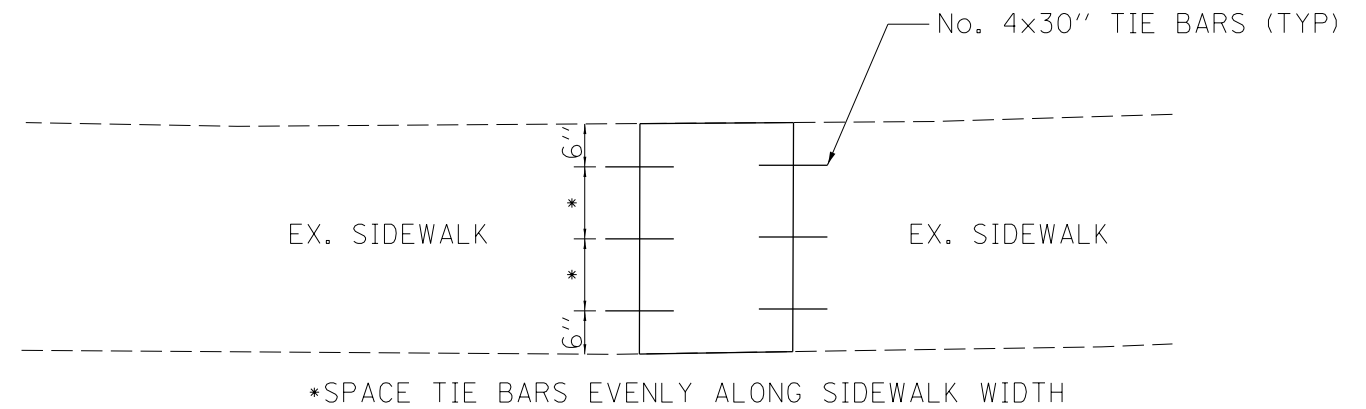
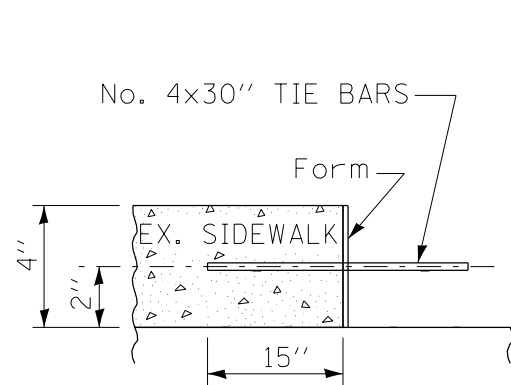
SCALE:	SHEET	OF	SHEETS	STA.	TO STA.
--------	-------	----	--------	------	---------

F.A.I. R.T.E.	SECTION	COUNTY	TOTAL SHEETS	SHEET NO.
64	.	WHITE	27	25
ILLINOIS FED. AID PROJECT			CONTRACT NO. 78393	

SHEET 2A

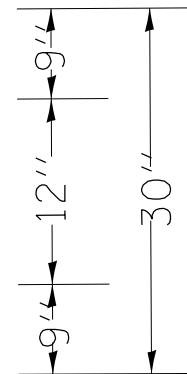
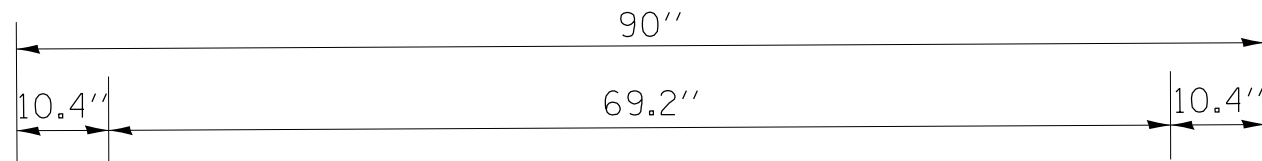


STA 28A+73.31



SIDEWALK TIE BAR DETAIL
(TIE BAR FORMED IN PLACE)

FILE NAME =	USER NAME = colemm	DESIGNED -	REVISED -	STATE OF ILLINOIS DEPARTMENT OF TRANSPORTATION	PVT WIDEN & CULVERT EXT DETAIL SIDEWALK TIE BAR DETAIL				F.A.I. RTE.	SECTION	COUNTY	TOTAL SHEETS	SHEET NO.
pw:\IL\084EBIDINTEG.illinois.gov\PIDOT\Documents\IDOT Offices\District 9\Projects\78393\Drawings\CAD\Sheets\78393-shd-rpln-det.dwg	DATE = 4/4/2016	CHECKED -	REVISED -						64	*	WHITE	27	26
Default	PLOT SCALE = 40.0000' / in.	DATE -	REVISED -		SCALE:	SHEET	OF	SHEETS	STA.	TO	STA.	ILLINOIS FED. AID PROJECT CONTRACT NO. 78393	
												*D9 SKEETER MTN REST AREA 2014-1	



3.0" RADIUS, 1.0" BORDER, BLACK ON FLUORESCENT ORANGE;
"CLOSED" E MOD 2K

C	L	O	S	E	D	C	L	O	S	E	D
10.4	9.8	2.6	8.9	1.4	10.1	2.5	9.7	3.0	8.9	2.5	9.8

R11-2

TO BE USED ON A TYPE III BARRICADE LOCATED ON
THE I-64 EXIT RAMP @ SKEETER MOUNTAIN REST AREA

TO BE PLACED OVER REST AREA SIGNS LOCATED ON I-64:
OVERHEAD SIGN STRUCTURE @ SKEETER MOUNTAIN REST AREA
SIGN STRUCTURE LOCATED ON I-64 IN INDIANA, 1 MILE EAST OF REST AREA
SIGN STRUCTURE LOCATED ON I-64 IN INDIANA, 2 MILES EAST OF REST AREA

R7-8 (ADA PARKING)

TO BE USED:
SKEET2A STA 24+16.15, 71' LT
SKEET2B STA 24+91.34, 11' RT
SKEET2B STA 25+74.14, 20' RT
SKEET2B STA 26+03.00, 57' LT
SWNEW1 STA 0+23.12, 4.2' LT

D9-6 (ADA SYMBOL) (18"x18")
M6-1 (DIRECTIONAL ARROW AUXILIARY) (12"x9")

COLOR: BACKGROUND - BLUE (RETROREFLECTIVE)
SYMBOL - WHITE (RETROREFLECTIVE)

TO BE USED:
PATH 0+02 LT
SWNEW1 1+17 LT

FILE NAME =	USER NAME = colemm	DESIGNED -	REVISED -	STATE OF ILLINOIS DEPARTMENT OF TRANSPORTATION	SIGN DETAILS				F.A.I. RTE.	SECTION	COUNTY	TOTAL SHEETS	SHEET NO.
pw:\IL\084EBIDINTEG.illinois.gov\PIDOT\Documents\DOT Offices\District 9\Projects\78393\Drawings\CAD\Sheets\78393-shd-pln-det		DRAWN -	REVISED -		64	.	WHITE	27	27				
Default	PLOT SCALE = 40.0000' / in.	CHECKED -	REVISED -		CONTRACT NO. 78393								
	PLOT DATE = 4/4/2016	DATE -	REVISED -		SCALE:	SHEET	OF	SHEETS	STA.	TO STA.	ILLINOIS FED. AID PROJECT		