

STATE OF ILLINOIS
DEPARTMENT OF TRANSPORTATION

F.A. RTE.	SECTION	COUNTY	TOTAL SHEETS	SHEET NO.
VAR	*	SANGAMON	10	1
		ILLINOIS	CONTRACT NO. 72J19	

*ADMIN BUILDING PARKING LOT-2016

INDEX OF SHEETS

- 1 COVER SHEET
- 2 GENERAL NOTES
- 3 SUMMARY OF QUANTITIES
- 4 SCHEDULE OF QUANTITIES
- 5-10 PLAN OVERVIEW

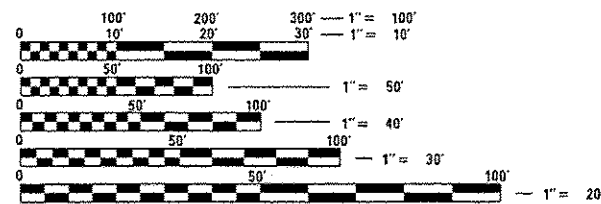
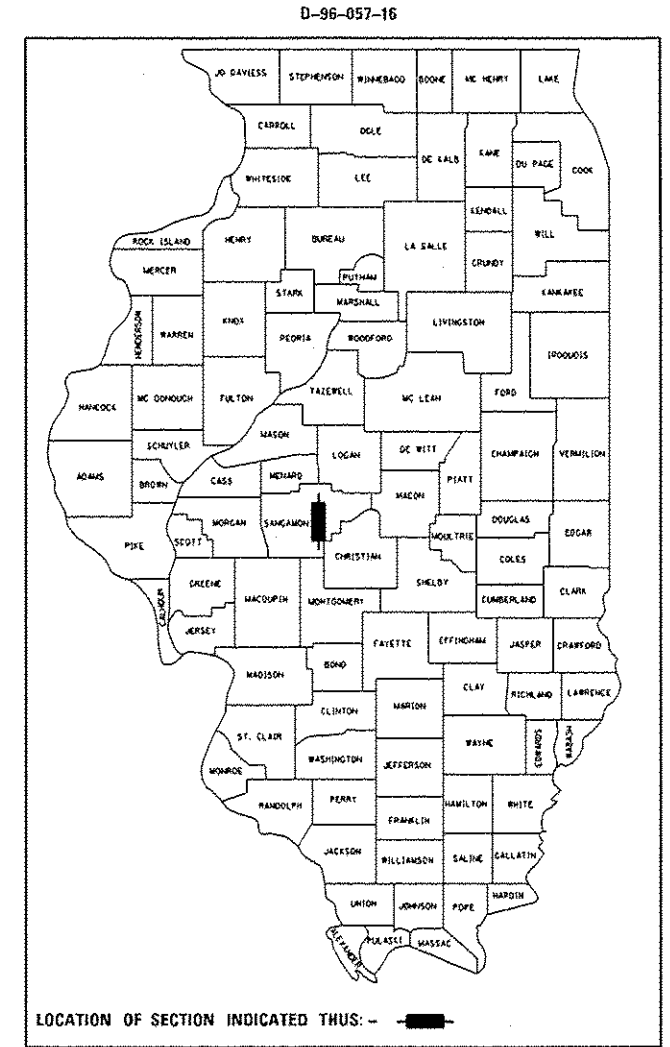
**PROPOSED
HIGHWAY PLANS**

ROUTE VARIOUS
SECTION ADMIN BLDG
PROJECT
SEALING AND STRIPING
SANGAMON COUNTY

C-96-057-16

STANDARDS

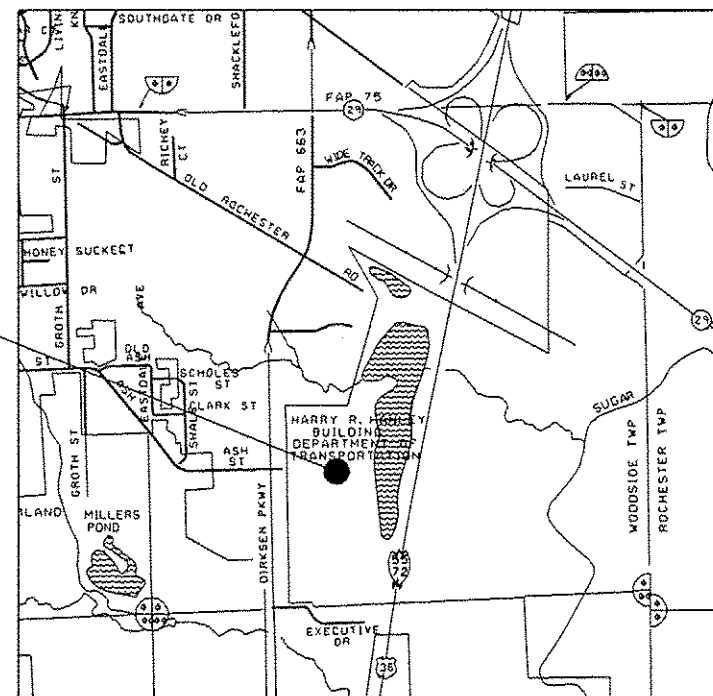
- 000001-06
- 001006
- 701901-05
- 780001-05
- B.L.R. 17-4



FULL SIZE PLANS HAVE BEEN PREPARED USING STANDARD ENGINEERING SCALES. REDUCED SIZED PLANS WILL NOT CONFORM TO STANDARD SCALES. IN MAKING MEASUREMENTS ON REDUCED PLANS, THE ABOVE SCALES MAY BE USED.

J.U.L.I.E.
JOINT UTILITY LOCATION INFORMATION FOR EXCAVATION
1-800-892-0123
OR 811

ILLINOIS DEPARTMENT OF
TRANSPORTATION
ADMINISTRATION BUILDING
2300 S. DIRKSEN PARKWAY
SPRINGFIELD, ILLINOIS



LOCATION MAP

STATE OF ILLINOIS
DEPARTMENT OF TRANSPORTATION

SUBMITTED May 2 2016
Jeffery M. South JPM
REGIONAL ENGINEER

May 6 2016
Maureen M. Addis P.E.
ENGINEER OF DESIGN AND ENVIRONMENT

May 6 2016
[Signature]
DIRECTOR OF PROGRAM DEVELOPMENT

PRINTED BY THE AUTHORITY
OF THE STATE OF ILLINOIS

PROJECT ENGINEER: JAY EDWARDS (217) 785-0597
PROJECT MANAGER: JARED MARTIN (217) 524-0064

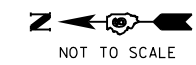
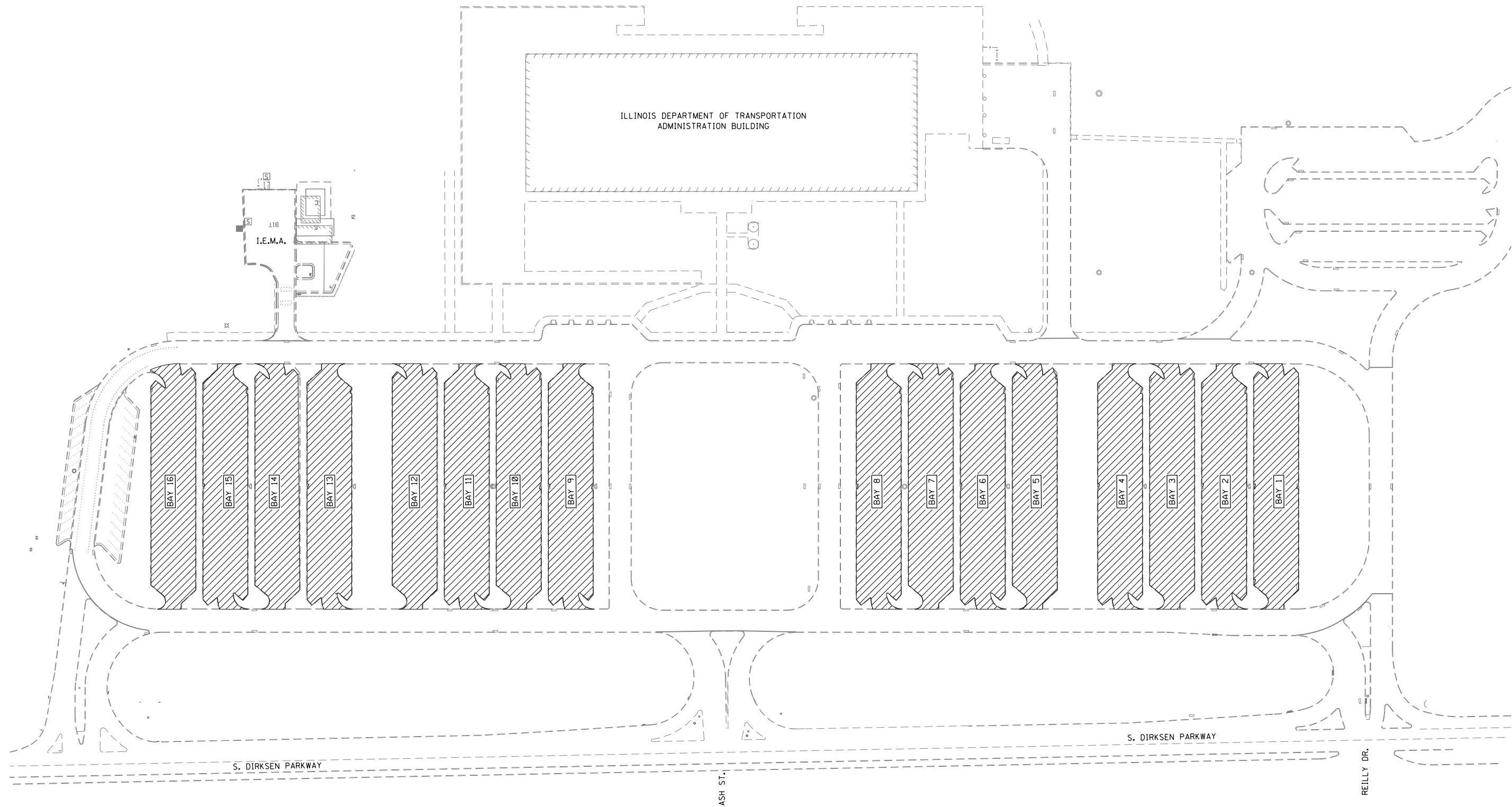
CONTRACT NO. 72J19

GENERAL NOTES

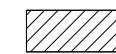
1. ANY REFERENCE TO A STANDARD IN THESE PLANS SHALL BE INTERPRETED TO MEAN THE EDITION AS INDICATED BY THE SUB NUMBER LISTED IN THE INDEX OF SHEETS OR THE COPY OF THE STANDARD INCLUDED IN THESE PLANS.
2. IN ADDITION TO FIELD SURVEYS, PLAN DIMENSIONS AND DETAILS RELATIVE TO THE EXISTING FACILITIES HAVE BEEN TAKEN FROM EXISTING PLANS AND ARE SUBJECT TO CONSTRUCTION VARIATIONS. IT SHALL BE THE CONTRACTOR'S RESPONSIBILITY TO VERIFY SUCH DIMENSIONS AND DETAILS IN THE FIELD. SUCH VARIATIONS SHALL NOT BE A CAUSE FOR ADDITIONAL COMPENSATION DUE TO A CHANGE IN THE SCOPE OF WORK; HOWEVER, THE CONTRACTOR WILL BE PAID FOR THE QUANTITY ACTUALLY FURNISHED AT THE UNIT PRICE BID FOR THE WORK.
3. THE CONTRACTOR SHALL BE RESPONSIBLE FOR PROTECTING UTILITY PROPERTY FROM CONSTRUCTION OPERATIONS, AS OUTLINED IN ARTICLE 107.39 OF THE STANDARD SPECIFICATIONS. THE J.U.L.I.E. NUMBER IS 1-800-892-0123. A MINIMUM OF 48 HOURS ADVANCE NOTICE IS REQUIRED.
4. BEFORE BEGINNING PARKING LOT SEALING AND/OR STRIPING WORK, AND PRIOR TO PARKING BAY, OR RING RD. CLOSURES CONTACT LARRY CROWLEY (782-0657) OR MIKE MCGEE (524-3938) IN THE BUREAU OF BUSINESS SERVICES.
5. BEFORE LAYING OUT PROPOSED STRIPING, CONTACT MIKE BRAND (782-7651) OR DAN MLACNIK (557-3405) IN THE BUREAU OF DESIGN & ENVIRONMENT.

DISTRICT SIX	
EXAMINED <u>April 29th</u> 20 <u>16</u>	
<i>John C. Cunningham</i>	
OPERATIONS ENGINEER	
EXAMINED <u>April 29</u> 20 <u>16</u>	
<i>Ron Duchambeau</i>	
PROJECT IMPLEMENTATION ENGINEER	
EXAMINED <u>April 29</u> 20 <u>16</u>	
<i>John P. Myers</i>	
PROGRAM DEVELOPMENT ENGINEER	

FILE NAME *	USER NAME * martinjk	DESIGNED -	REVISED -	STATE OF ILLINOIS DEPARTMENT OF TRANSPORTATION	GENERAL NOTES	SCALE:	SHEET	OF	SHEETS	STA.	TO STA.	SECTION	COUNTY	TOTAL SHEETS	SHEET NO.
		CHECKED -	REVISED -			ILLINOIS FED. AID PROJECT									
PLOT SCALE * 100.0000' / in.		DATE -	REVISED -												
PLOT DATE * 5/2/2016															



NOT TO SCALE

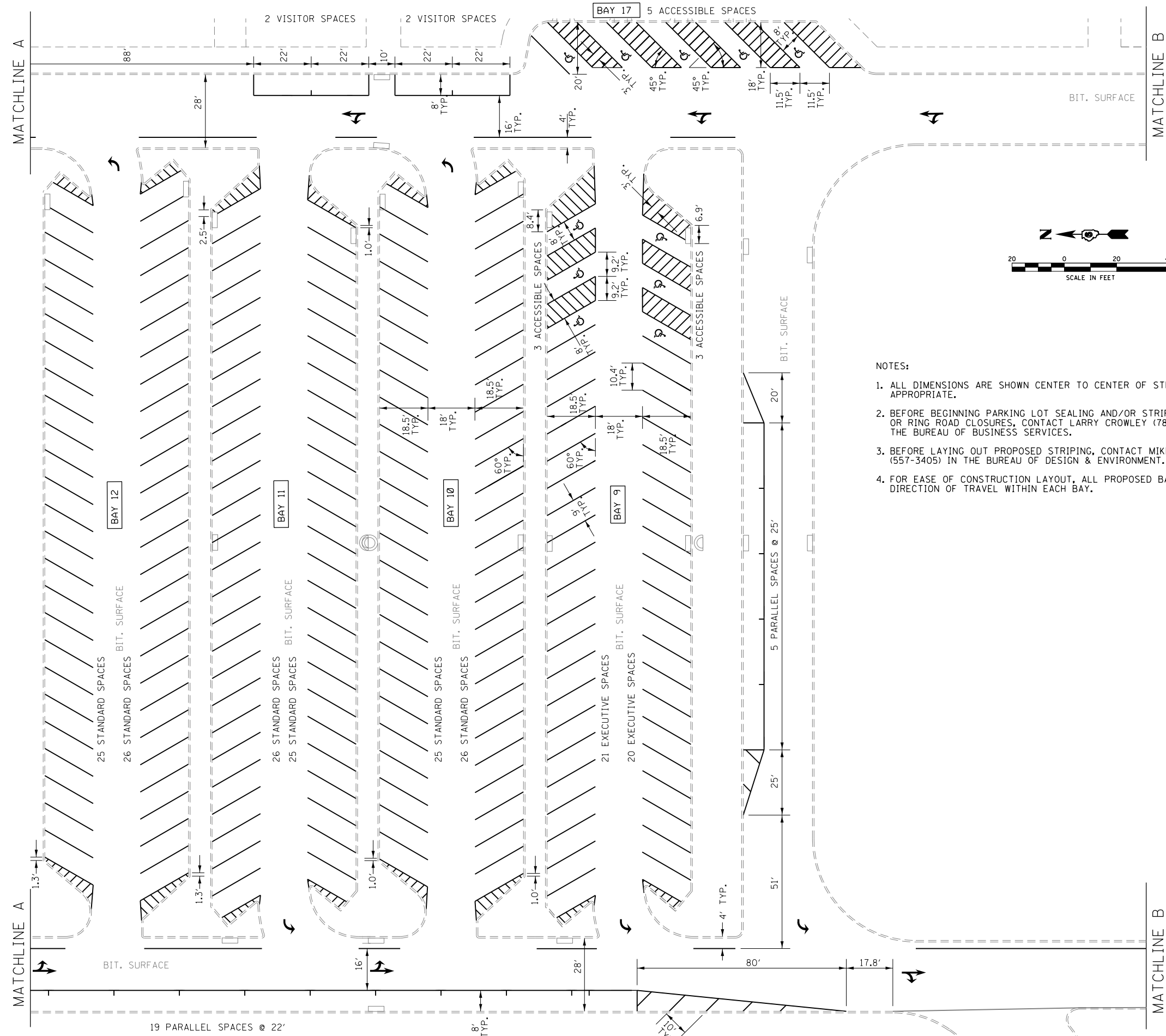
 AREA TO BE SEAL COATED

FILE NAME =	USER NAME = Verenskif	DESIGNED -	REVISED -
pw\11084EBIDINTEG.illinois.gov\PIWIDOT\Documents\IDOT Offices\District 6\Projects\06722016\Drawings\ADSheets\06722016-sht-pland		CHECKED -	REVISED -
Default	PLOT DATE = 5/2/2016	DATE -	REVISED -

**STATE OF ILLINOIS
DEPARTMENT OF TRANSPORTATION**

PLAN OVERVIEW PARKING BAYS 1-16 SEAL COAT			
SCALE:	SHEET	OF SHEETS	STA. TO STA.

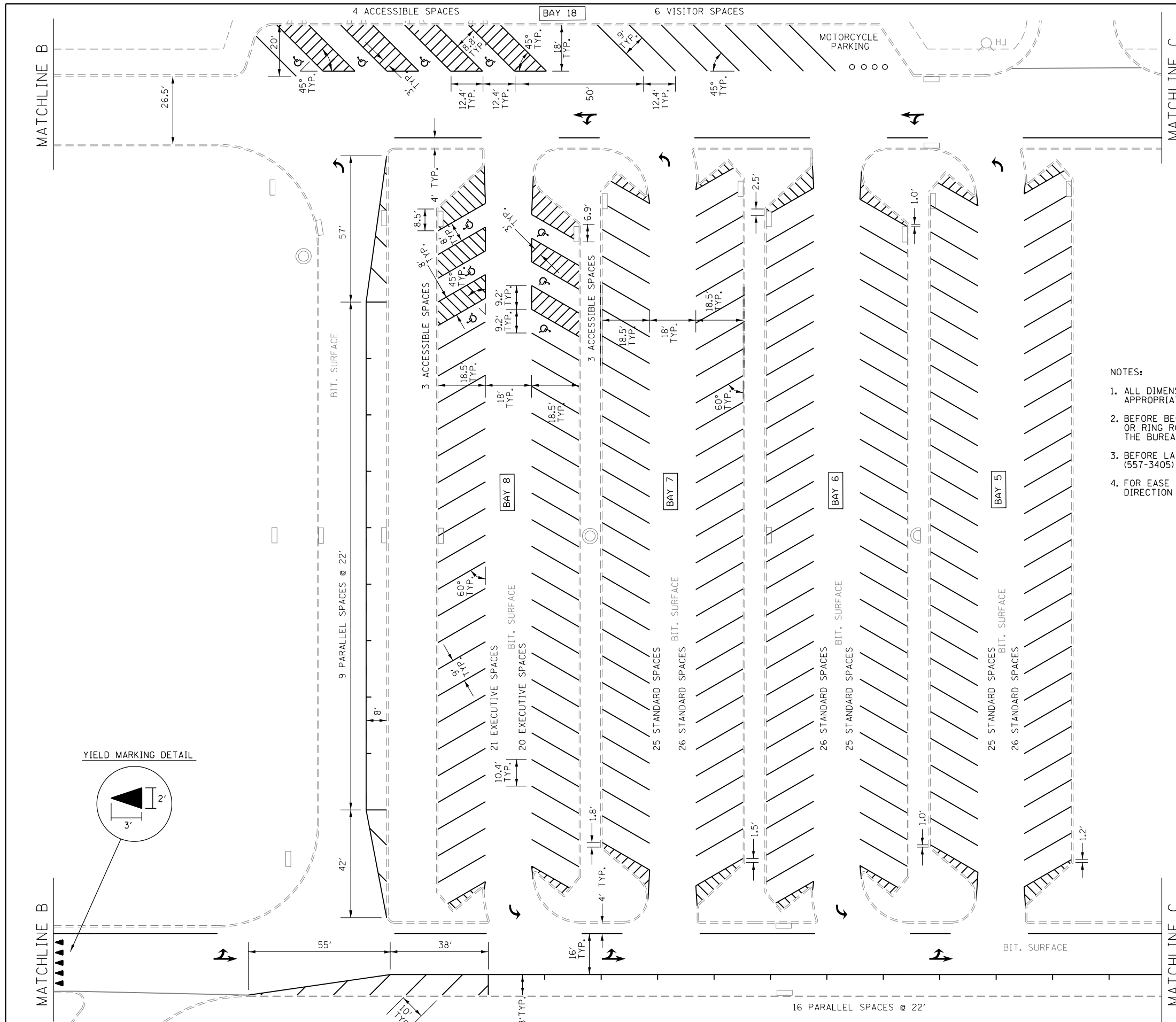
F.A. RTE.	SECTION	COUNTY	TOTAL SHEETS	SHEET NO.
		SANGAMON	10	6
ILLINOIS FED. AID PROJECT			CONTRACT NO.	72J19



NOTES:

1. ALL DIMENSIONS ARE SHOWN CENTER TO CENTER OF STRIPING, OR TO FACE OF CURB, WHEN APPROPRIATE.
2. BEFORE BEGINNING PARKING LOT SEALING AND/OR STRIPING WORK, AND PRIOR TO PARKING BAY OR RING ROAD CLOSURES, CONTACT LARRY CROWLEY (782-0657) OR MIKE MCGEE (524-3938) IN THE BUREAU OF BUSINESS SERVICES.
3. BEFORE LAYING OUT PROPOSED STRIPING, CONTACT MIKE BRAND (782-7651) OR DAN MLACNIK (557-3405) IN THE BUREAU OF DESIGN & ENVIRONMENT.
4. FOR EASE OF CONSTRUCTION LAYOUT, ALL PROPOSED BAY STRIPING SHOULD BE LAID OUT IN THE DIRECTION OF TRAVEL WITHIN EACH BAY.

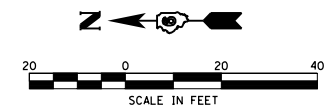
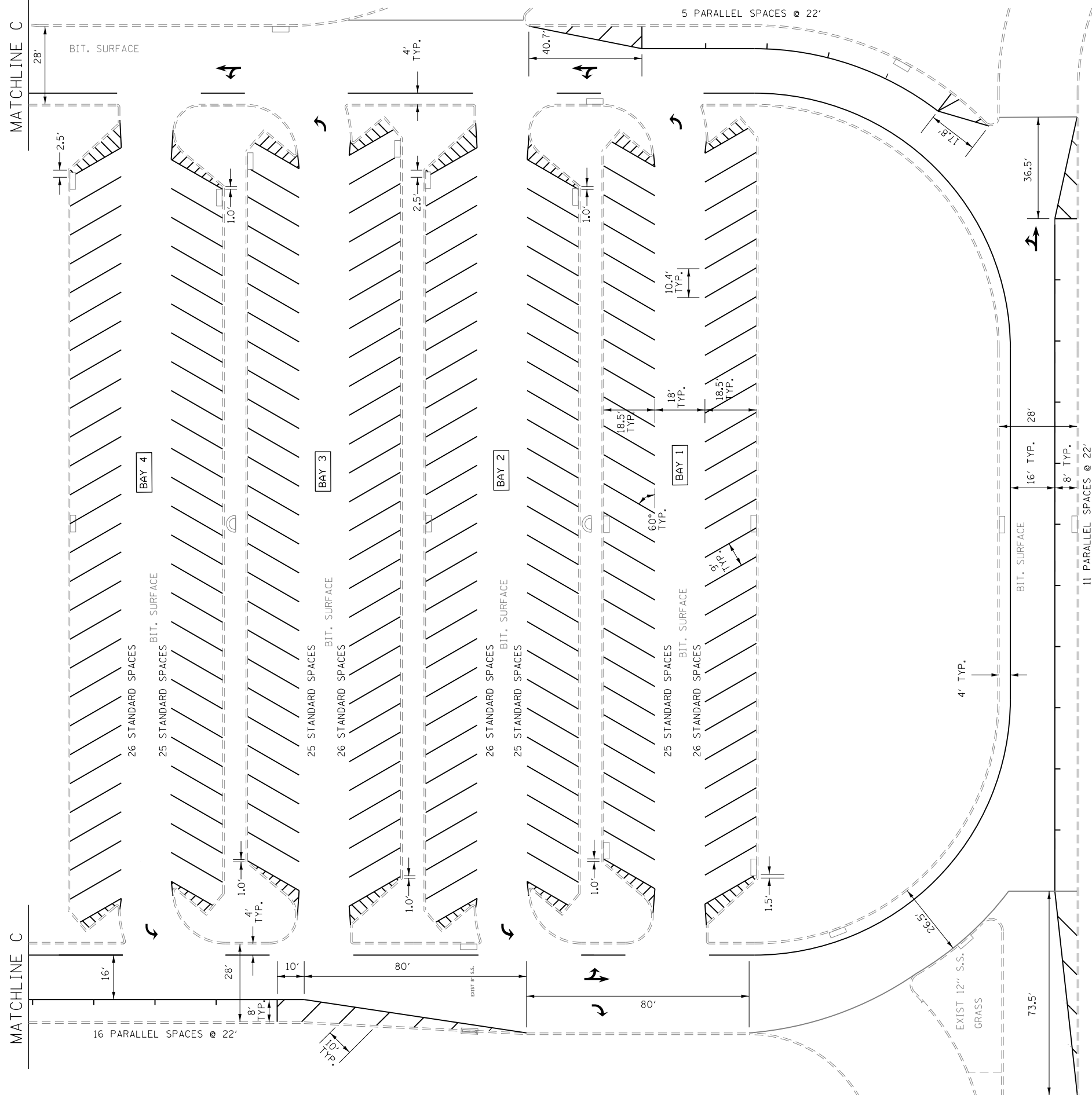
FILE NAME =	USER NAME = Verenskif	DESIGNED -	REVISED -	STATE OF ILLINOIS DEPARTMENT OF TRANSPORTATION	PLAN OVERVIEW PAVEMENT MARKING				F.A. RTE.	SECTION	COUNTY	TOTAL SHEETS	SHEET NO.
pw:\IL\084EBIDINTEG.illinois.gov\PI\DOT\Documents\DOT Offices\District 6\Projects\0672\Drawings\AD\Sheets\0672J19-sht-plan.dwg		DRAWN -	REVISED -										
Default		CHECKED -	REVISED -			SCALE:	SHEET	OF	SHEETS	STA.	TO	STA.	
		DATE -	REVISED -										



NOTES:

1. ALL DIMENSIONS ARE SHOWN CENTER TO CENTER OF STRIPING, OR TO FACE OF CURB, WHEN APPROPRIATE.
2. BEFORE BEGINNING PARKING LOT SEALING AND/OR STRIPING WORK, AND PRIOR TO PARKING BAY OR RING ROAD CLOSURES, CONTACT LARRY CROWLEY (782-0657) OR MIKE MCGEE (524-3938) IN THE BUREAU OF BUSINESS SERVICES.
3. BEFORE LAYING OUT PROPOSED STRIPING, CONTACT MIKE BRAND (782-7651) OR DAN MLCACNIK (557-3405) IN THE BUREAU OF DESIGN & ENVIRONMENT.
4. FOR EASE OF CONSTRUCTION LAYOUT, ALL PROPOSED BAY STRIPING SHOULD BE LAID OUT IN THE DIRECTION OF TRAVEL WITHIN EACH BAY.

FILE NAME =	USER NAME = Verenskif	DESIGNED -	REVISED -	STATE OF ILLINOIS DEPARTMENT OF TRANSPORTATION	PLAN OVERVIEW PAVEMENT MARKING				F.A. RTE.	SECTION	COUNTY	TOTAL SHEETS	SHEET NO.	
pw:\IL\084EBIDINTEG.illinois.gov\PIWIDOT\Documents\IDOT Offices\District 6\Projects\0672\Drawings\EA0\Drawings\0672\19-shr-plans\		CHECKED -	REVISED -		SCALE:	SHEET	OF	SHEETS	STA.	TO	STA.	ILLINOIS	FED. AID PROJECT	
Default		DATE -	REVISED -									SANGAMON	10	9
												CONTRACT NO.	72J19	



NOTES:

1. ALL DIMENSIONS ARE SHOWN CENTER TO CENTER OF STRIPING, OR TO FACE OF CURB, WHEN APPROPRIATE.
2. BEFORE BEGINNING PARKING LOT SEALING AND/OR STRIPING WORK, AND PRIOR TO PARKING BAY OR RING ROAD CLOSURES, CONTACT LARRY CROWLEY (782-0657) OR MIKE MCGEE (524-3938) IN THE BUREAU OF BUSINESS SERVICES.
3. BEFORE LAYING OUT PROPOSED STRIPING, CONTACT MIKE BRAND (782-7651) OR DAN MLCACNIK (557-3405) IN THE BUREAU OF DESIGN & ENVIRONMENT.
4. FOR EASE OF CONSTRUCTION LAYOUT, ALL PROPOSED BAY STRIPING SHOULD BE LAID OUT IN THE DIRECTION OF TRAVEL WITHIN EACH BAY.

FILE NAME =	USER NAME = Verenskif	DESIGNED -	REVISED -
pw:\IL\084EBIDINTEG.illinois.gov\PIDOT\Documents\DOT Offices\District 6\Projects\0672\Drawings\EA\Drawings\0672\19-sht-pland		DRAWN -	REVISED -
Default	PLOT SCALE = 40.0000' / in.	CHECKED -	REVISED -
	PLOT DATE = 5/2/2016	DATE -	REVISED -

**STATE OF ILLINOIS
DEPARTMENT OF TRANSPORTATION**

**PLAN OVERVIEW
PAVEMENT MARKING**

SCALE:	SHEET	OF	SHEETS	STA.	TO	STA.
--------	-------	----	--------	------	----	------

F.A. RTE.	SECTION	COUNTY	TOTAL SHEETS	SHEET NO.
		SANGAMON	10	10
ILLINOIS FED. AID PROJECT			CONTRACT NO. 72J19	