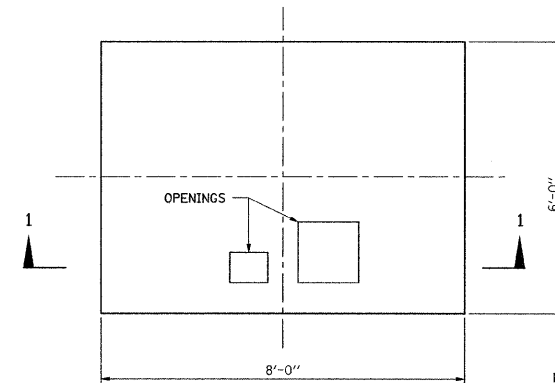


FENCE DETAIL
NOT TO SCALE

SPECIFICATIONS			
FABRIC	MESH	GAUGE	SELVAGE
ALUM.	2"	9	K+B
BARBED WIRE	TYPE 4 PT.	3 STR.	6 STR.
FRMWRK.	O.D.	WALL	LBS/LF
TOP & BOT. RAIL	1 5/8"	.140	2.27
LINE POSTS	2 3/8"	.154	3.65
BRACE RAIL	1 5/8"	.140	2.27
CORNER POSTS	2 3/8"	.203	5.79
END POSTS	2 3/8"	.203	5.79

NOTES:

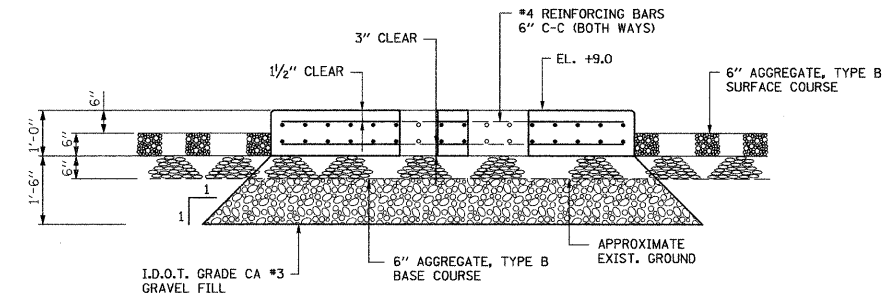
1. ALL MATERIALS SHALL BE HOT DIP GALVANIZED
2. ALL FITTINGS SHALL BE PRESSED STEEL.



PLAN

NOTE: SEE DWG E2 FOR ADDITIONAL DETAIL

SUPERPAVE - Mix Selection SURFACE TREATMENTS							
ADT	CODE NO	ITEM	UNIT	AC TYPE	VOIDS	MAX RAP %	MIN THICKNESS
700-5000	4066424	BITUMINOUS SURFACE COURSE, SUPERPAVE MIX "C", N50	TON	PG 58-22	3% @ 30 Gyr.	30	1-1/2"
700-5000	4066614	BITUMINOUS BINDER COURSE, SUPERPAVE 1L-19.0, N50	TON	PG 58-22	3% @ 30 Gyr.	30	1-1/2"



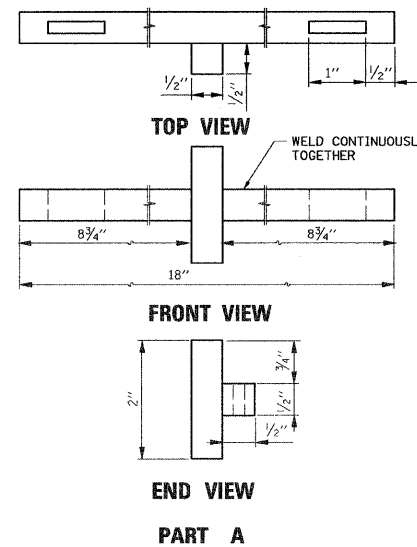
SECTION 1-1

COMED TRANSFORMER FOUNDATION

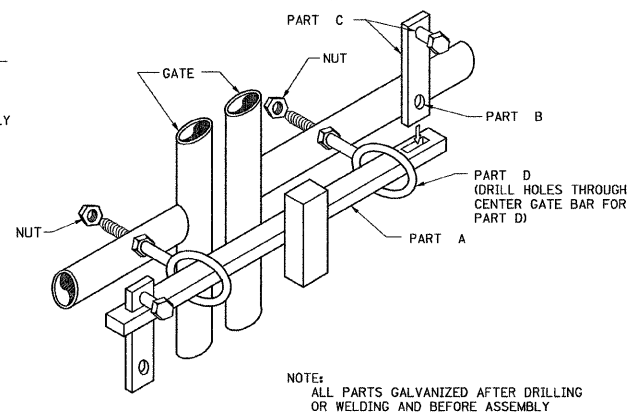
SCALE: 1/2" = 1'-0"

NOTES:

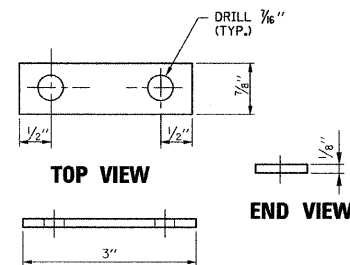
1. COORDINATE WITH COMED FOR THE OFFSETS/SETBACKS /OPENINGS/CONDUITS/ETC.



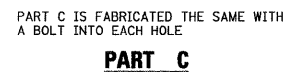
SWING GATE LOCKING DEVICE
NOT TO SCALE



NOTE: ALL PARTS GALVANIZED AFTER DRILLING OR WELDING AND BEFORE ASSEMBLY



FRONT VIEW PART B



FRONT VIEW PART C

PART C IS FABRICATED THE SAME WITH A BOLT INTO EACH HOLE

REVISIONS	
NAME	DATE