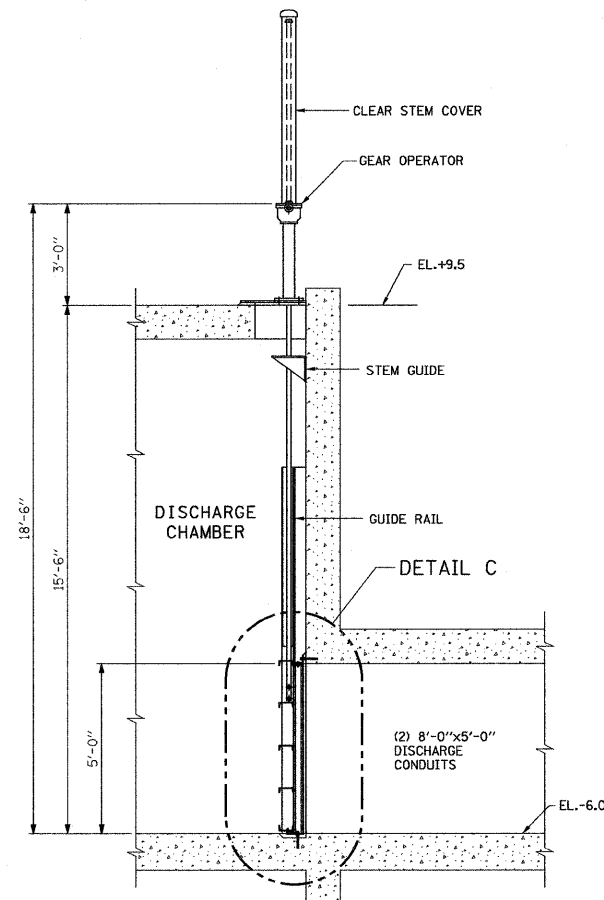
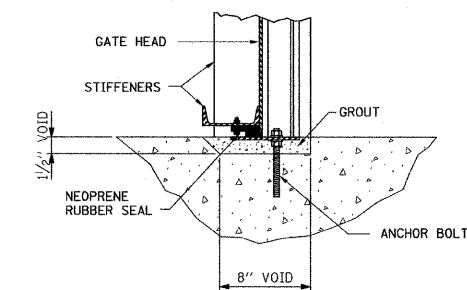
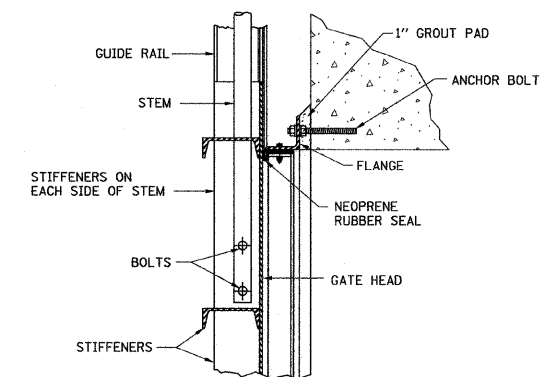


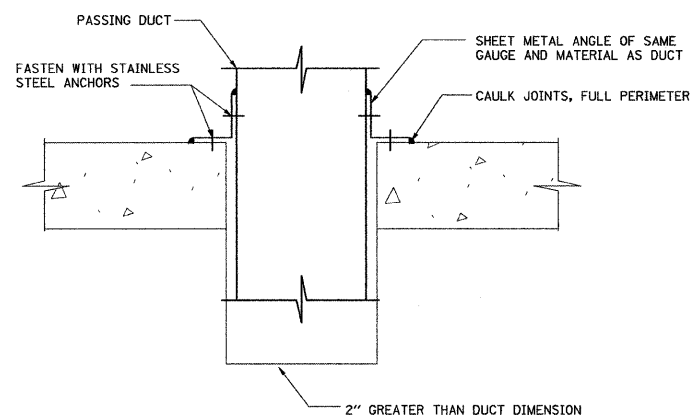
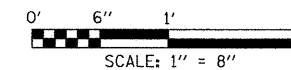
SECTION C-C



SECTION A-A



DETAIL C



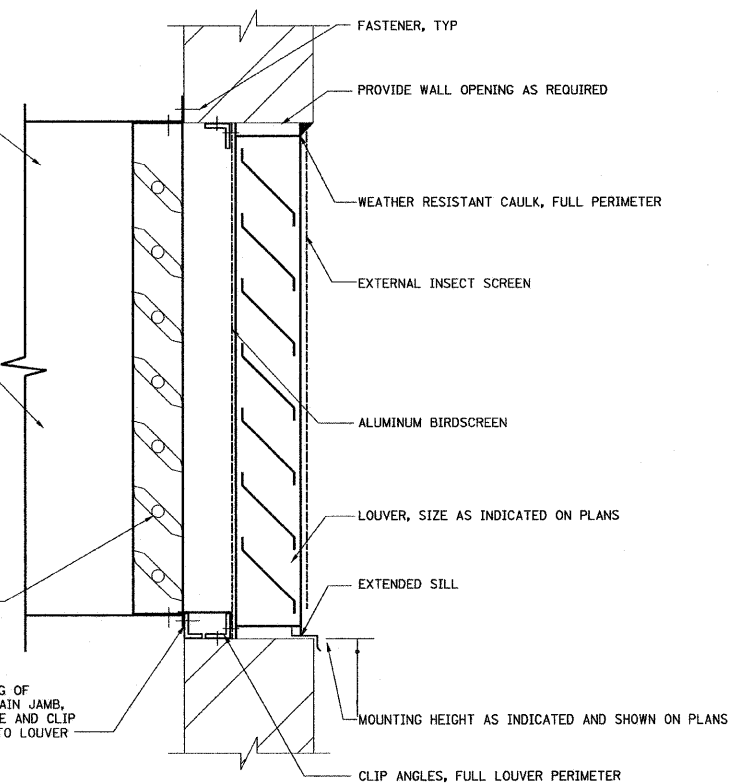
TYPICAL DUCT FLOOR PENETRATION DETAIL
NTS

FOR UNDUCTED APPLICATIONS WITH DAMPERS, PROVIDE DUCT EXTENSION PAST DAMPER AND MIN 50% FREE AREA ALUMINUM EXPANDED METAL. MOUNT DAMPER OUTSIDE OF ENCLOSURE.

DUCT, FOR LOCATIONS WHERE DAMPER INDICATED, FASTEN DUCT TO PERIMETER OF DAMPER FRAME. FOR LOCATIONS WITHOUT DAMPERS, FASTEN DUCT TO WALL WITH DUCT FLANGE ALONG TOP AND SIDES AND TO ANGLE AT BOTTOM

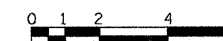
SINGLE FLANGED DAMPER WHERE INDICATED ON PLANS OR SCHEDULES. ACTUATOR FOR MOTOR OPERATED DAMPERS SHALL BE LOCATED OUTSIDE OF THE AIRSTREAM

1/8" ALUMINUM ANGLE ALONG BOTTOM OF OPENING OF HEIGHT REQUIRED TO ALIGN 1" ABOVE LOUVER DRAIN JAMB, PROVIDE ALUMINUM SHEET COVER BETWEEN ANGLE AND CLIP ANGLE TO ALLOW WATER TO DRAIN FROM DUCT TO LOUVER



NOTE: ALL FASTENERS SHALL BE OF STAINLESS STEEL CONSTRUCTION

TYPICAL LOUVER DETAIL
NTS



M5

| REVISIONS | |
|-----------|------|
| NAME | DATE |
| | |
| | |
| | |
| | |
| | |

ILLINOIS DEPARTMENT OF TRANSPORTATION

PUMP STATION NO. 27
REHABILITATION

MECHANICAL DETAILS

SCALE: AS SHOWN
DATE: 04-23-10

DRAWN BY: HFF
CHECKED BY: KHC