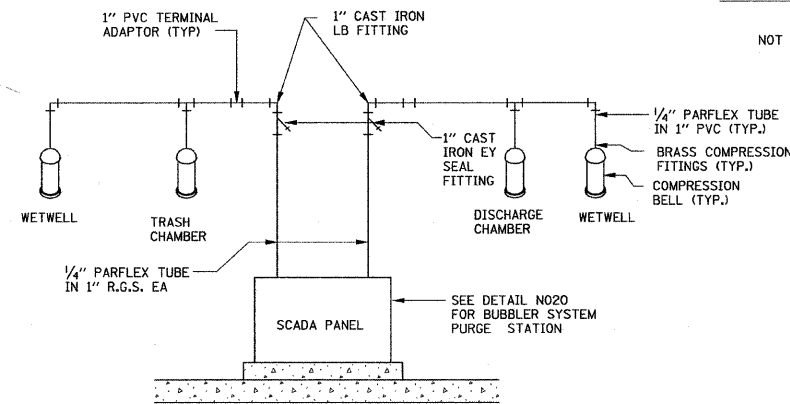


PROPOSED SITE PLAN

SCALE: 0 5 10 20 40 FT.

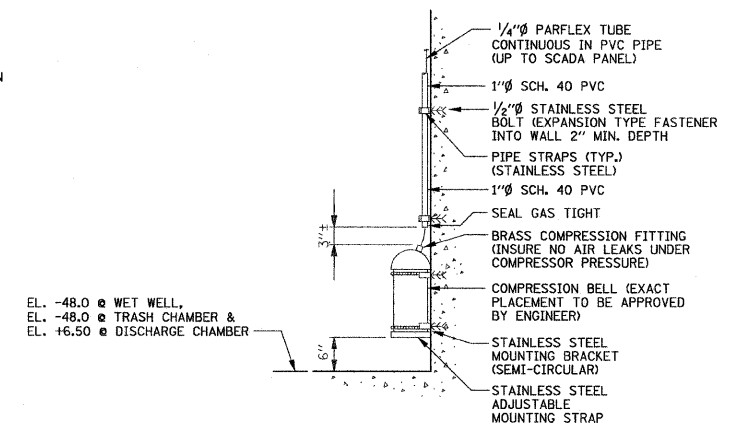
NOTE:

- FOR ADDITIONAL INFORMATION SEE DWGS G1, G2 & G3.
- FOR LOCATION OF COMPRESSION BELLS AND ROUTING OF BUBBLER AIR TUBING SEE DWG. M2.
- ALL STEEL SUPPORT FRAMING MEMBERS AND PLATES SHALL BE HOT DIP GALVANIZED AFTER FABRICATION. FIELD CUT EDGES SHALL BE COLD GALVANIZED. ALL CONNECTING BOLTS AND HARDWARES SHALL BE STAINLESS STEEL.
- THE LOCATION OF ALL SCADA COMPRESSION BELLS MUST BE SUBMITTED TO THE ENGINEER PRIOR TO INSTALLATION FOR REVIEW AND COMMENT. THE COMPRESSION BELL SHALL NOT BE INSTALLED WITHOUT THE APPROVAL OF THE ENGINEER.



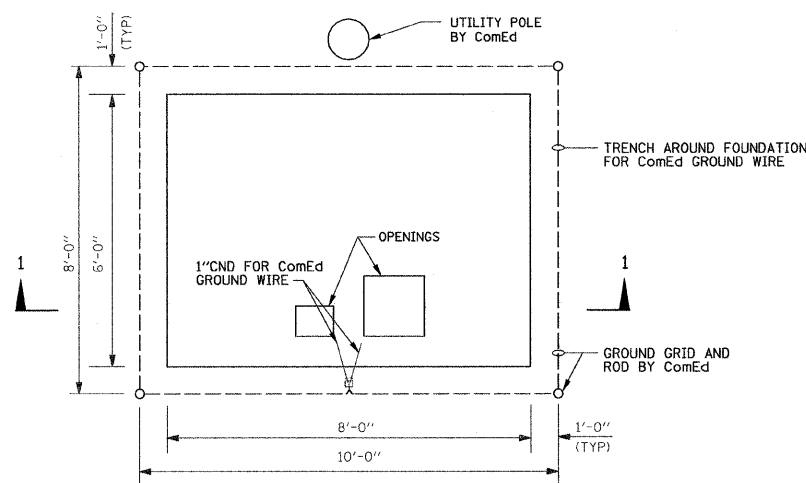
COMPRESSION BELL PIPING SCHEMATIC

NOT TO SCALE

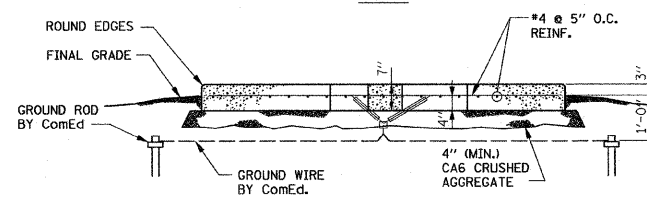


COMPRESSION BELL MOUNTING DETAIL

NOT TO SCALE



PLAN



SECTION 1-1

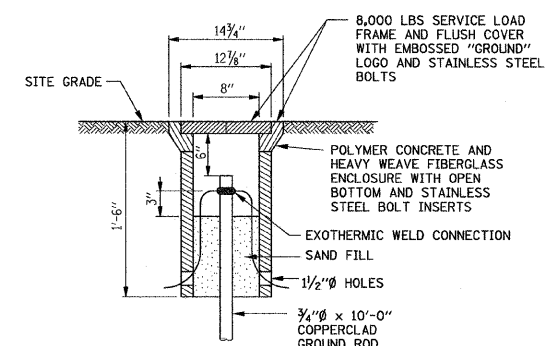
ComEd TRANSFORMER PAD

NOTE: PROVIDE PADS SIMILAR TO DETAIL ABOVE FOR 027-T-1 AND 027-T-2

NOT TO SCALE

NOTES:

- INSTALL TRANSFORMER FOUNDATION PER ComEd SYSTEM STANDARD C5286.
- ALL CONDUITS SHALL BE RGS ENCASED IN CONCRETE UNLESS OTHERWISE NOTED



GROUND ROD & GROUND WELL DETAIL

NOT TO SCALE

E2

REVISIONS	
NAME	DATE

ILLINOIS DEPARTMENT OF TRANSPORTATION

**PUMP STATION NO. 27
REHABILITATION
ELECTRICAL
SITE PLAN**

SCALE: AS SHOWN

DATE: 04-23-10

DRAWN BY: HFF

CHECKED BY: MS