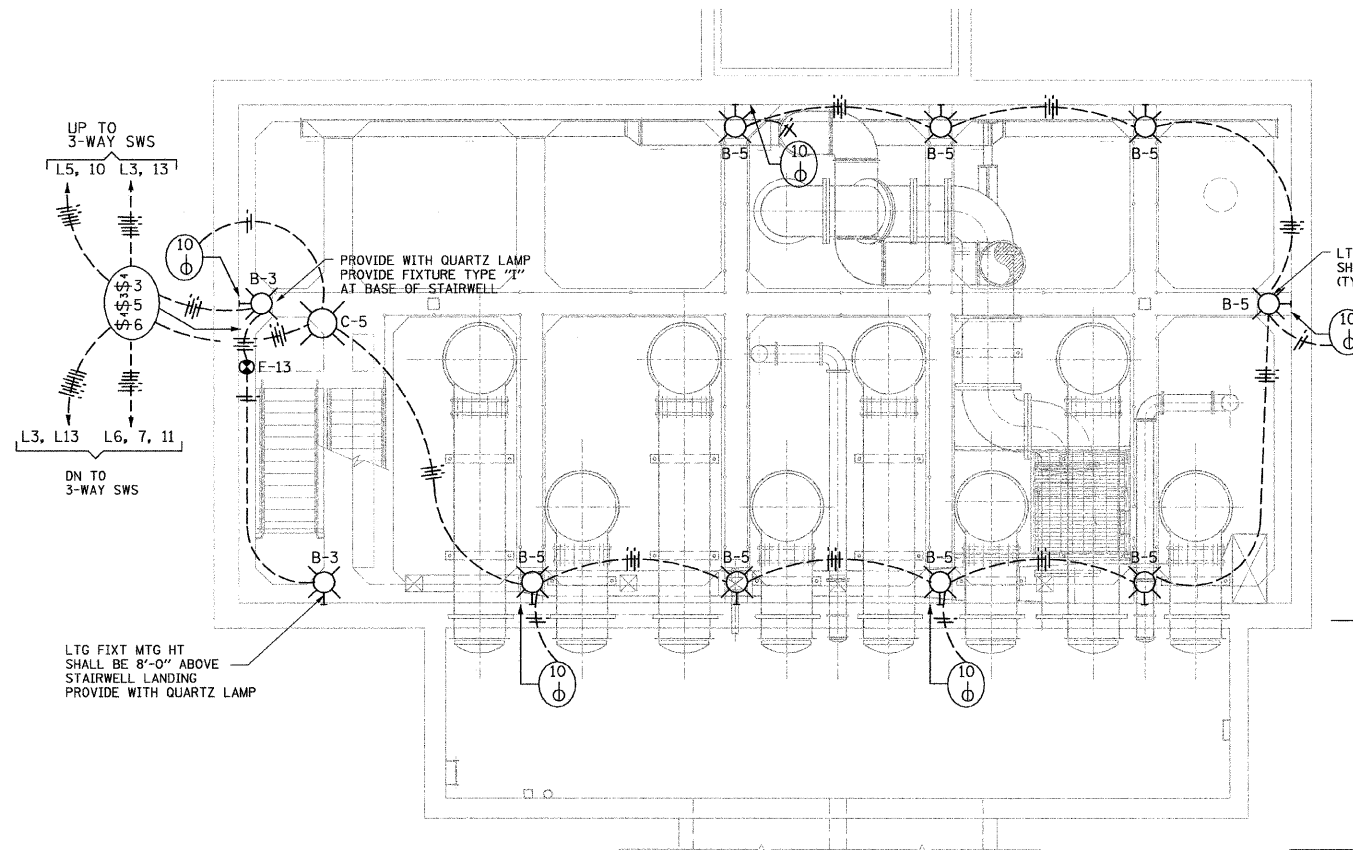


F.A.I. RTE.	SECTION	COUNTY	TOTAL SHEETS	SHEET NO.
90/94	1213.4 A-T	COOK	63	45
FED. ROAD DIST. NO.	ILLINOIS	FED. AID PROJECT		

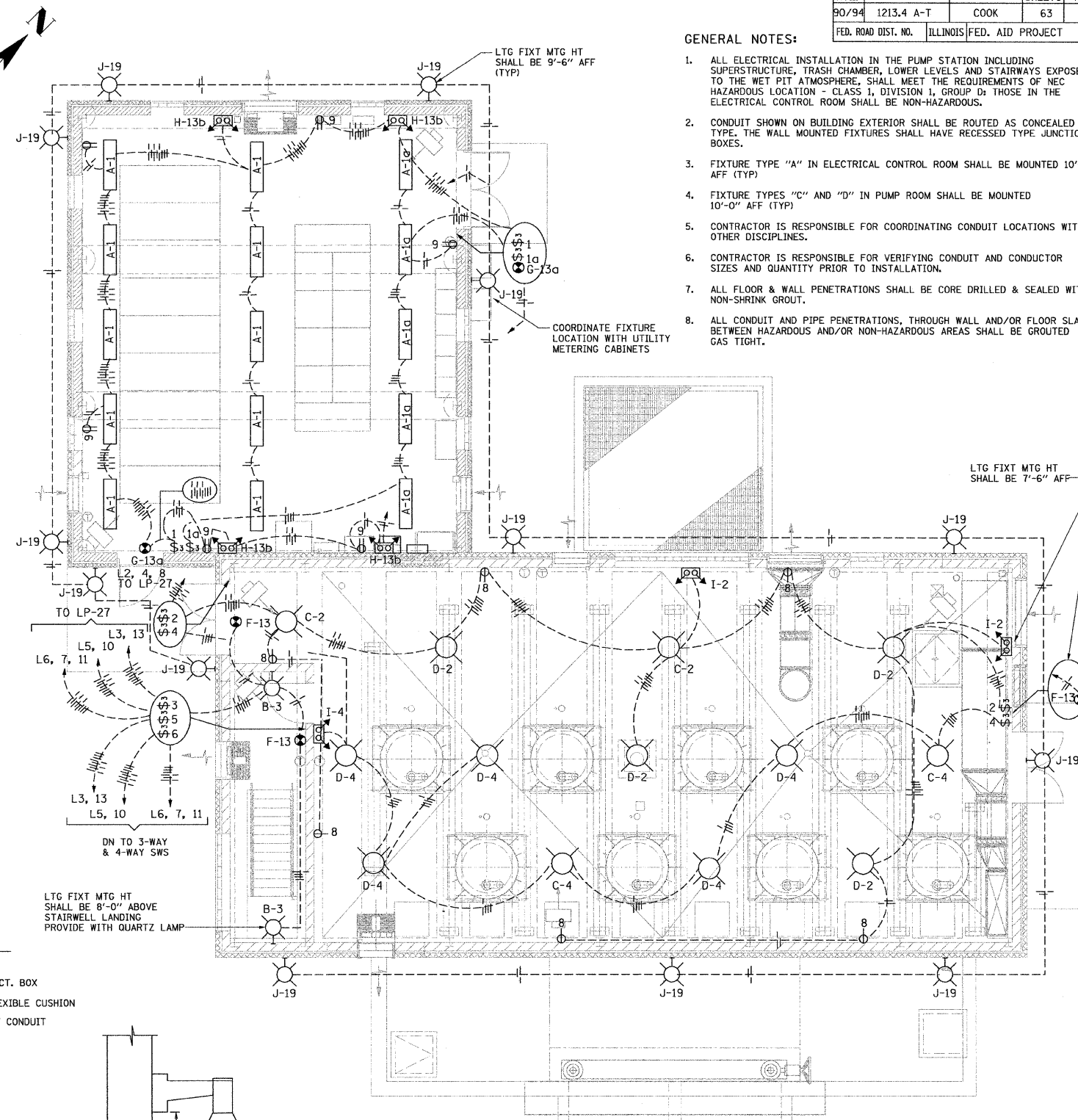
LIGHTING FIXTURE SCHEDULE			
TYPE	LAMPS	MOUNTING	DESCRIPTION
A	2 F32T8	PENDANT	LITHONIA LTG. FIXT. MOUNT AS INDICATED ON PLANS CAT. NO. DMW-2-32-120-GE101S OR APPROVED EQUAL
B	1 175W/MH	WALL	APPLETON PULSE START EXPLOSION-PROOF CLASS 1 DIV 1 LTG. FIXT. CAT. NO. CPB715-MT-CMR-4AN OR APPROVED EQUAL MOUNT AS INDICATED ON PLANS PROVIDE WITH QUARTZ LAMP WHERE INDICATED
C	1 175W/MH	PENDANT	APPLETON PULSE START EXPLOSION-PROOF CLASS 1 DIV 1 LTG. FIXT. CAT. NO. CPP17150MT-CMR-4ST W/ QUARTZ LAMP OR APPROVED EQUAL MOUNT AS INDICATED ON PLANS
D	1 175W/MH	PENDANT	APPLETON PULSE START EXPLOSION-PROOF CLASS 1 DIV 1 LTG. FIXT. CAT. NO. CPP17150MT-CMR-4ST OR APPROVED EQUAL MOUNT AS INDICATED ON PLANS
E	1 400W/MH/M59	WALL	APPLETON CODEMASTER 2 SERIES PULSE START EXPLOSION-PROOF AND MARINE TYPE FLOODLIGHT W/30" FLEXIBLE CONNECTION CAT. NO. CFP400CA-MT OR APPROVED EQUAL MOUNT AS INDICATED ON PLANS
F	1 WITH UNIT	WALL	LITHONIA EXIT LIGHT WITH LED LAMPS SUITABLE FOR CLASS 1 DIV 1 ENVIRONMENT CAT. NO. D-S-W-1-R-20 OR APPROVED EQUAL MOUNTED ABOVE DOOR UNLESS OTHERWISE NOTED
G	1 WITH UNIT	WALL	LITHONIA EXIT LIGHT WITH LED LAMPS AND RED LETTERS/WHITE HOUSING CAT. NO. LQM-S-W-3-R-120/277-EL N OR APPROVED EQUAL MOUNTED ABOVE DOOR
H	2 WITH UNIT	WALL	LITHONIA EMERGENCY BATTERY LIGHT WITH TWO UNIT MOUNTED LAMPS HEADS CAT. NO. ETL125 OR APPROVED EQUAL MOUNTED 8'-0" AFF
I	2 WITH UNIT	WALL	LITHONIA EMERGENCY BATTERY LIGHT WITH TWO UNIT MOUNTED LAMP HEADS SUITABLE FOR CLASS 1 DIV ENVIRONMENT CAT. NO. ZX685-ELA-ZX-H1212-WM OR APPROVED EQUAL MOUNTED 8'-0" AFF
J	1 175W/MH	WALL	LITHONIA PULSE START METAL HALIDE WALL PACK MOUNT AS INDICATED ON PLANS CAT. NO. TWP-175M-120-SCWA-LP1 OR APPROVED EQUAL

GENERAL NOTES:

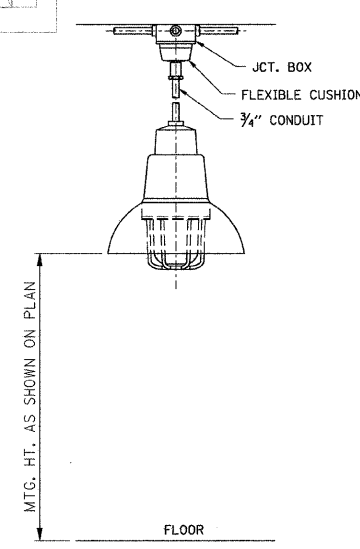
- ALL ELECTRICAL INSTALLATION IN THE PUMP STATION INCLUDING SUPERSTRUCTURE, TRASH CHAMBER, LOWER LEVELS AND STAIRWAYS EXPOSED TO THE WET PIT ATMOSPHERE, SHALL MEET THE REQUIREMENTS OF NEC HAZARDOUS LOCATION - CLASS 1, DIVISION 1, GROUP D; THOSE IN THE ELECTRICAL CONTROL ROOM SHALL BE NON-HAZARDOUS.
- CONDUIT SHOWN ON BUILDING EXTERIOR SHALL BE ROUTED AS CONCEALED TYPE. THE WALL MOUNTED FIXTURES SHALL HAVE RECESSED TYPE JUNCTION BOXES.
- FIXTURE TYPE "A" IN ELECTRICAL CONTROL ROOM SHALL BE MOUNTED 10'-0" AFF (TYP)
- FIXTURE TYPES "C" AND "D" IN PUMP ROOM SHALL BE MOUNTED 10'-0" AFF (TYP)
- CONTRACTOR IS RESPONSIBLE FOR COORDINATING CONDUIT LOCATIONS WITH OTHER DISCIPLINES.
- CONTRACTOR IS RESPONSIBLE FOR VERIFYING CONDUIT AND CONDUCTOR SIZES AND QUANTITY PRIOR TO INSTALLATION.
- ALL FLOOR & WALL PENETRATIONS SHALL BE CORE DRILLED & SEALED WITH NON-SHRINK GROUT.
- ALL CONDUIT AND PIPE PENETRATIONS, THROUGH WALL AND/OR FLOOR SLAB, BETWEEN HAZARDOUS AND/OR NON-HAZARDOUS AREAS SHALL BE GROUTED GAS TIGHT.



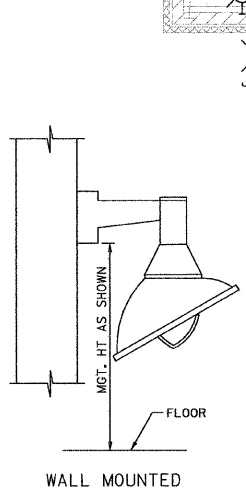
PLAN @ EL. -8.5'



PLAN @ EL. 9.5'



TYPICAL PENDANT FIXTURE MOUNTING (NOT TO SCALE)

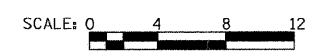


TYPICAL WALL FIXTURE MOUNTING (NOT TO SCALE)



E14

REVISIONS	
NAME	DATE



ILLINOIS DEPARTMENT OF TRANSPORTATION  
**PUMP STATION NO. 27  
 REHABILITATION**  
**LIGHTING PLANS SH. 1**

SCALE: AS SHOWN  
 DATE: 04-23-10

DRAWN BY: MS  
 CHECKED BY: MS