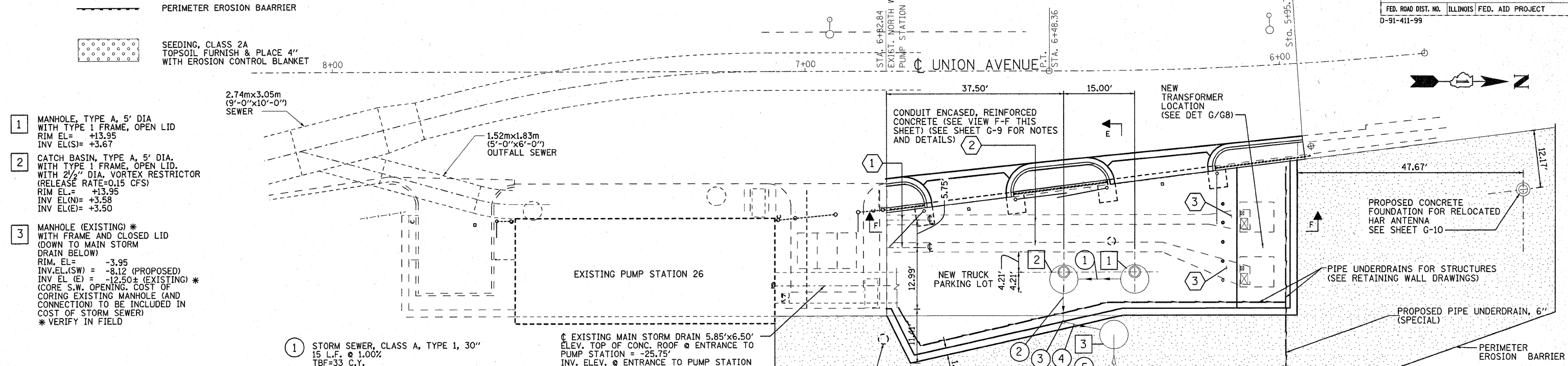


F.A.P. RTE.	SECTION	COUNTY	TOTAL SHEETS	SHEET NO.
90/94	1999-161-1	COOK	75	7
STA.		TO STA.		
FED. ROAD DIST. NO.		ILLINOIS FED. AID PROJECT		
D-91-411-99				



- 1 MANHOLE, TYPE A, 5' DIA WITH TYPE 1 FRAME, OPEN LID RIM EL= +13.95 INV EL(S)= +3.67
- 2 CATCH BASIN, TYPE A, 5' DIA. WITH TYPE 1 FRAME, OPEN LID. WITH 2 1/2" DIA. VORTEX RESTRICTOR (RELEASE RATE=0.15 CFS) RIM EL= +13.95 INV EL(N)= +3.58 INV EL(E)= +3.50
- 3 MANHOLE (EXISTING) * WITH FRAME AND CLOSED LID (DOWN TO MAIN STORM DRAIN BELOW) RIM, EL= -3.95 INV. EL (SW) = -8.12 (PROPOSED) INV EL (E) = -12.50± (EXISTING) * (CORE S.W. OPENING. COST OF CORING EXISTING MANHOLE (AND CONNECTION) TO BE INCLUDED IN COST OF STORM SEWER) * VERIFY IN FIELD

LANDSCAPING NOTES:

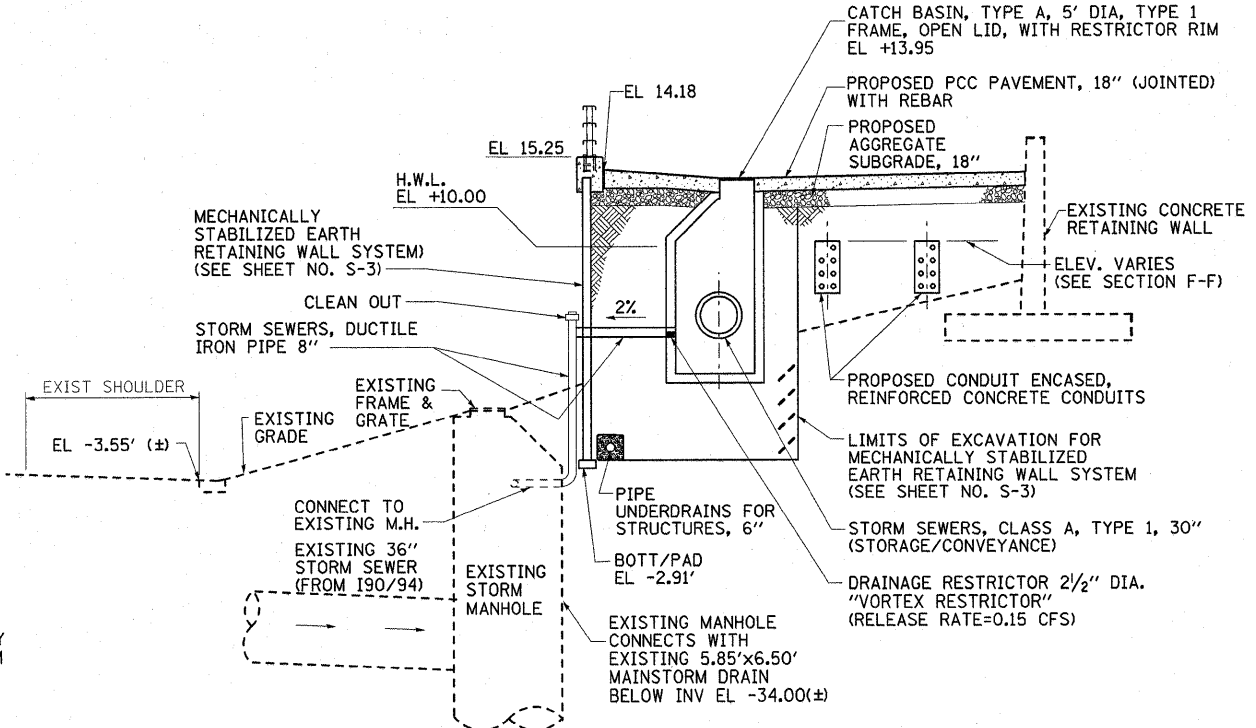
1. THE SEEDING DATES FOR BARE EARTH SEEDING OF MIXTURE CLASS 2A SHALL BE FROM APRIL 1 TO JUNE 1 AND FROM AUGUST 15 TO SEPTEMBER 30. ALL SEEDING NOT SHOWN ACCORDING TO THE SPECIFIED SEASONAL DATE SHALL REQUIRE PRIOR WRITTEN APPROVAL FROM THE ENGINEER. FAILURE TO SECURE SUCH APPROVAL SHALL RESULT IN REJECTION OF SEEDING AND REPLACEMENT BY THE CONTRACTOR AT HIS/HER EXPENSE.
2. THE CONTRACTOR SHALL TAKE ALL NECESSARY PRECAUTIONS FOR THE PROTECTION OF EXISTING PLANT MATERIAL FOR WHICH THE CONTRACT DOES NOT PROVIDE REMOVAL. THE PROTECTION OF THE EXISTING PLANT MATERIAL AND THE REPAIR OR REPLACEMENT OF EXISTING PLANT MATERIAL DAMAGED BY THE CONTRACTOR SHALL BE DONE IN ACCORDANCE WITH THE REQUIREMENTS OF SECTION 201 OF THE STANDARD SPECIFICATIONS.

EROSION CONTROL NOTES:

1. EROSION CONTROL ITEMS ARE CONSIDERED TO BE A HIGH PRIORITY ON THIS CONTRACT. THE ENGINEER WILL IMPLEMENT ALL PROVISIONS OF THE SPECIFICATION NECESSARY TO ASSURE THAT EROSION CONTROL ITEMS ARE CONSTRUCTED AND MAINTAINED IN A TIMELY WAY. ALL EROSION CONTROL MEASURES SHALL BE INSTALLED PRIOR TO BEGINNING ANY CONSTRUCTION ACTIVITIES.
2. THE EROSION CONTROL MEASURES SHOWN ARE BUT A GRAPHICAL REPRESENTATION OF SUGGESTED MEASURES. CONTRACTOR IS RESPONSIBLE FOR PROVIDING A SOIL EROSION AND SEDIMENTATION CONTROL PLAN TO ENSURE THAT NO SEDIMENT LEAVES THE CONSTRUCTION SITE.
3. THE CONTRACTOR WILL BE REQUIRED TO IMPLEMENT AND MAINTAIN SEDIMENT CONTROL MEASURES PRIOR TO STRIPPING EXISTING VEGETATION.
4. TEMPORARY EROSION CONTROL SEEDING WILL BE APPLIED AT A RATE OF 100 POUNDS PER ACRE.
5. PROVIDE TEMPORARY INLET AND PIPE PROTECTION AT ALL CATCH BASINS, MANHOLES AND END SECTIONS IN ACCORDANCE WITH IDOT STANDARDS AND SPECIFICATIONS.
6. CONTRACTOR SHALL PERFORM INSPECTION OF SOIL EROSION CONTROL MEASURES AT LEAST ONCE EVERY SEVEN (7) DAYS AND WITHIN 24 HOURS OF A STORM EVENT OF 0.5 INCHES OF GREATER RAINFALL.
7. VEGETATIVE COVER SHALL BE MAINTAINED FOR THE DURATION OF THE PROJECT AND RE-SEEDING AS NECESSARY TO ESTABLISH GOOD GROWTH, INCLUDING ADEQUATE WATERING AND FERTILIZER.

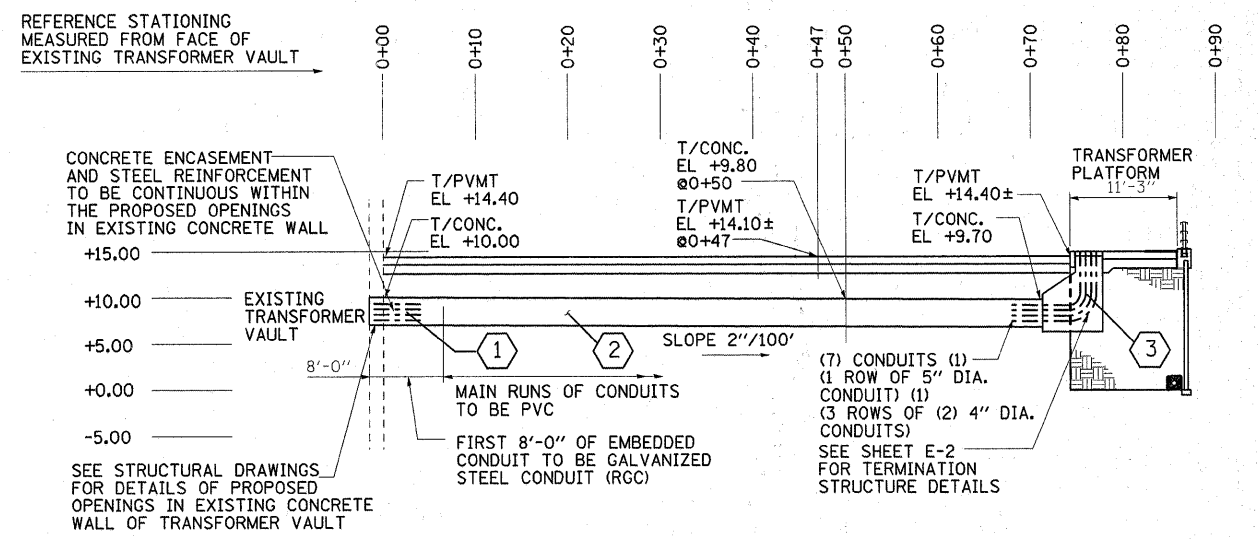
- 1 STORM SEWER, CLASS A, TYPE 1, 30" 15 L.F. @ 1.00% TBF=33 C.Y.
- 2 STORM SEWERS, DUCTILE IRON, PIPE, 8" (CL. 52) 12 L.F. @ 2.00% TBF=12 C.Y.
- 3 STORM SEWERS, DUCTILE IRON, PIPE, 8" (CL. 52) VERTICAL PIPE (ATTACHED TO STRUCTURE) WITH CLEAN OUT AT TOP 13' L.F.
- 4 STORM SEWERS, DUCTILE IRON, PIPE, 8" (CL. 52) 10 L.F. @ 2.00%
- 5 36" RCCP (EXISTING) (FROM 190/94 DRAINAGE)

- 1 CONDUIT ENCASED, REINFORCED CONCRETE, 1- 5" DIA. & 6- 4" DIA., RCC
- 2 CONDUIT ENCASED REINFORCED CONCRETE, 1- 5" DIA. & 6- 4" DIA., PVC
- 3 CONDUIT ENCASED REINFORCED CONCRETE, TERMINATION STRUCTURE (COST TO BE INCLUDED IN COST OF (2)) SEE SHEET E-2 FOR DETAILS

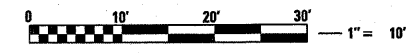


SECTION E-E

DRAINAGE, UTILITIES & EROSION CONTROL PLAN



SECTION F-F - CONDUIT ENCASED, REINFORCED CONCRETE



REVISIONS	
NAME	DATE

ILLINOIS DEPARTMENT OF TRANSPORTATION
DRAINAGE, UTILITIES & EROSION CONTROL PLAN
 SCALE: VERT. 1"=10'
 DATE: 3/2/2010
 DRAWN BY: T.K.
 CHECKED BY: K.F.

PLOT DATE = #DATE#
 FILE NAME = #FILE#
 PLOT SCALE = #SCALE#
 USER NAME = #USER#