

I-55 COORDINATE INFORMATION

POT I-55 STA. 965+50.62
 N: 1,715,564.51
 E: 1,022,929.97

POT I-55 STA. 1000+00.00
 N: 1,719,012.59
 E: 1,022,835.20

POT WFR STA. 4993+00.00
 N: 1,719,333.38
 E: 1,022,716.34

POT RAMP D STA. 4026+87.35
 N: 1,719,666.46
 E: 1,022,773.37

POT RAMP A STA. 7000+00.00
 N: 1,720,188.82
 E: 1,022,847.42

POT EFR STA. 7996+00.00
 N: 1,719,323.55
 E: 1,022,936.70

PI EFR STA. 8005+00.00
 N: 1,720,223.21
 E: 1,022,911.97

LEGEND

- ARS = ARSENAL ROAD
- WFC = WEST FRONTAGE CONNECTOR
- WFR = WEST FRONTAGE ROAD
- EFR = EAST FRONTAGE ROAD
- A = RAMP A
- B = RAMP B
- C = RAMP C
- D = RAMP D
- E = RAMP E

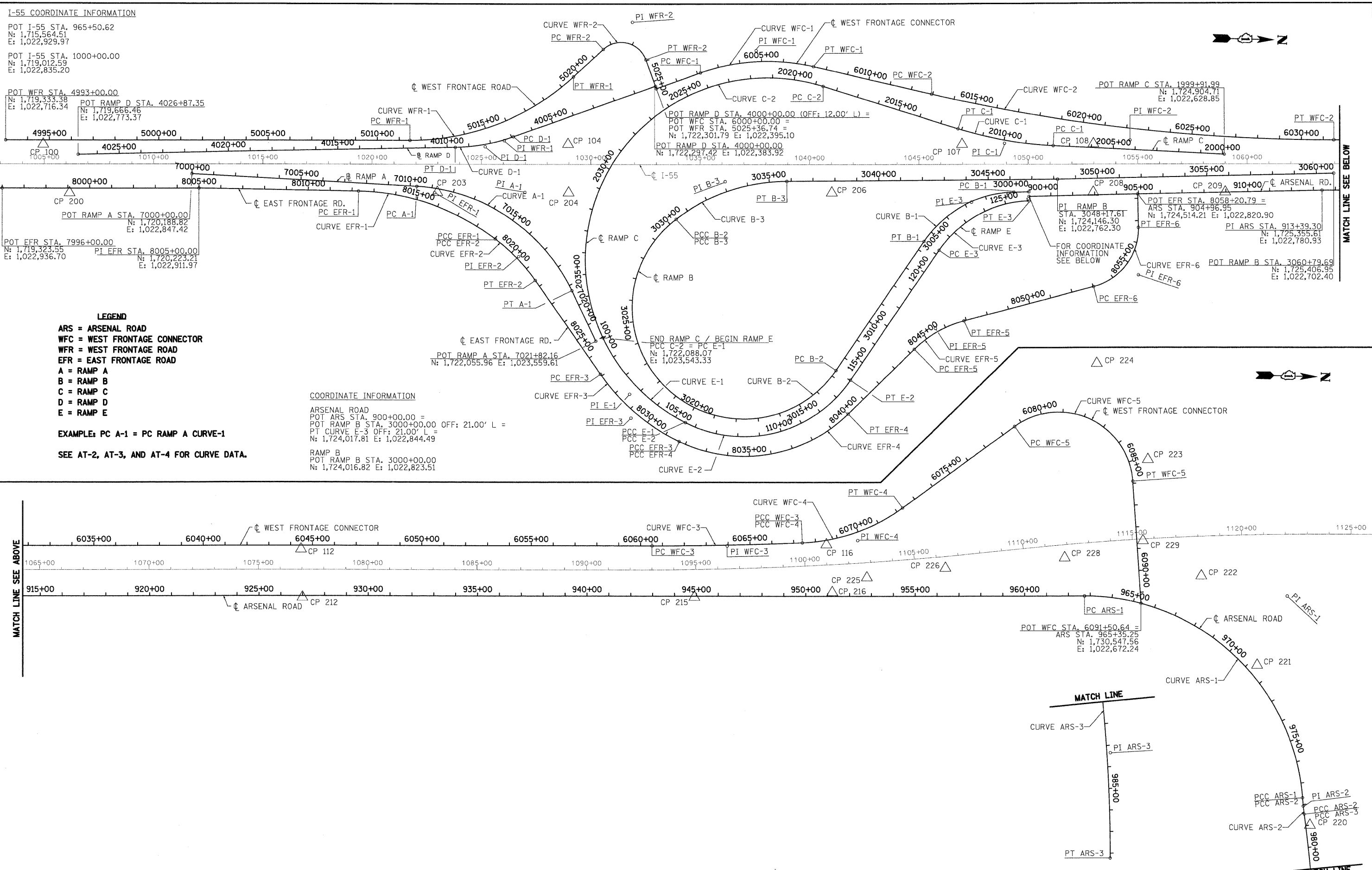
EXAMPLE: PC A-1 = PC RAMP A CURVE-1

SEE AT-2, AT-3, AND AT-4 FOR CURVE DATA.

COORDINATE INFORMATION

ARSENAL ROAD
 POT ARS STA. 900+00.00 =
 POT RAMP B STA. 3000+00.00 OFF: 21.00' L =
 PT CURVE E-3 OFF: 21.00' L =
 N: 1,724,017.81 E: 1,022,844.49

RAMP B
 POT RAMP B STA. 3000+00.00
 N: 1,724,016.82 E: 1,022,823.51



MATCH LINE SEE ABOVE

MATCH LINE

MATCH LINE SEE BELOW

McDonough Associates Inc.
 Engineers / Architects
 130 East Randolph Street, Chicago, Illinois 60601

FILE NAME = D:\6031-SHT-A\1801.dgn	USER NAME = TKluegel	DESIGNED - ---	REVISED - ---
PLOT SCALE = 1:200	CHECKED - ---	DRAWN - ---	REVISED - ---
PLOT DATE = 12/11/2009	DATE = 12/18/09		

STATE OF ILLINOIS
 DEPARTMENT OF TRANSPORTATION

ALIGNMENTS, TIES, AND BENCHMARKS

SCALE: 1"=200' SHEET NO. 1 OF 9 SHEETS STA. TO STA.

F.A.I. RTE.	SECTION	COUNTY	TOTAL SHEETS	SHEET NO.
55	(99-1&2)AC-3	WILL	524	29
FED. ROAD DIST. NO. 1 ILLINOIS FED. AID PROJECT			CONTRACT NO. 60C31	

FINAL