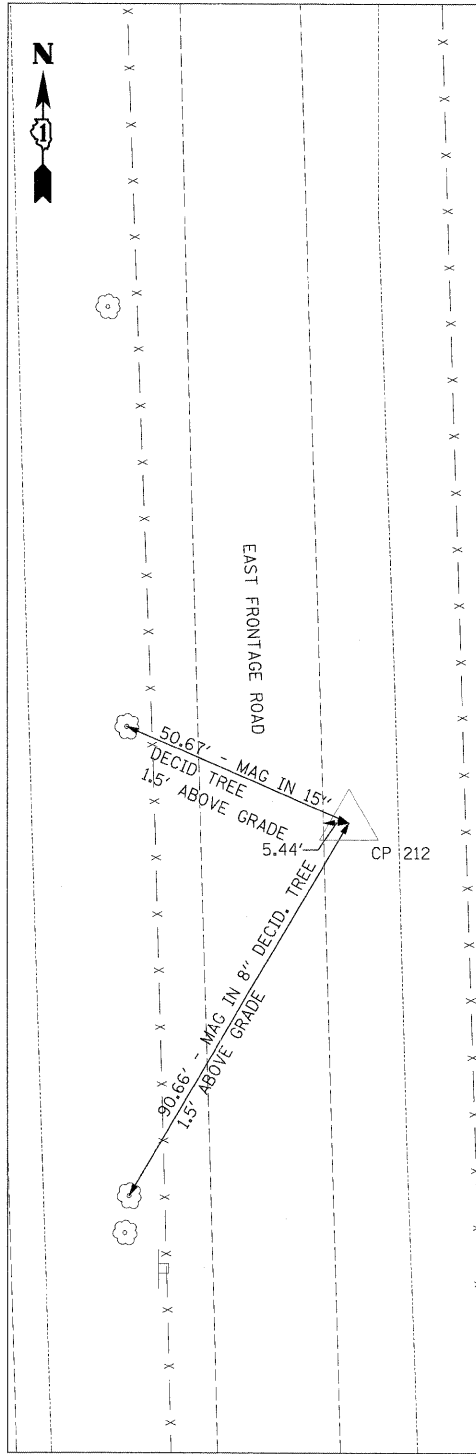


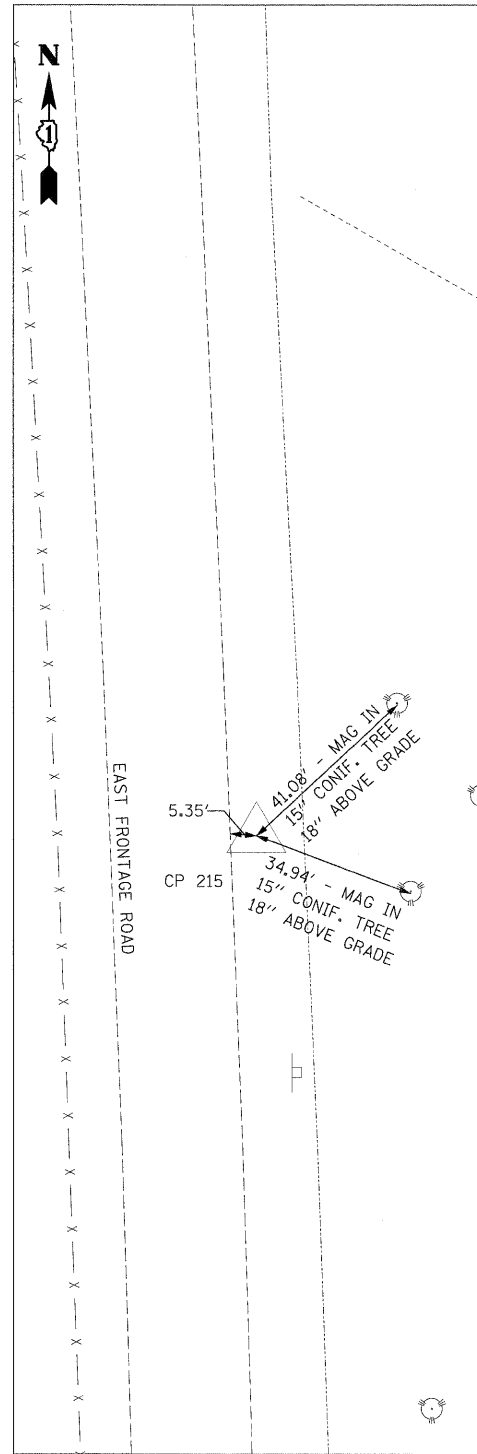
CP 112

N 172602.46
 E 1022531.24
 STA 1076+95.33
 OFF 92.60' LT
 ELEV 544.68



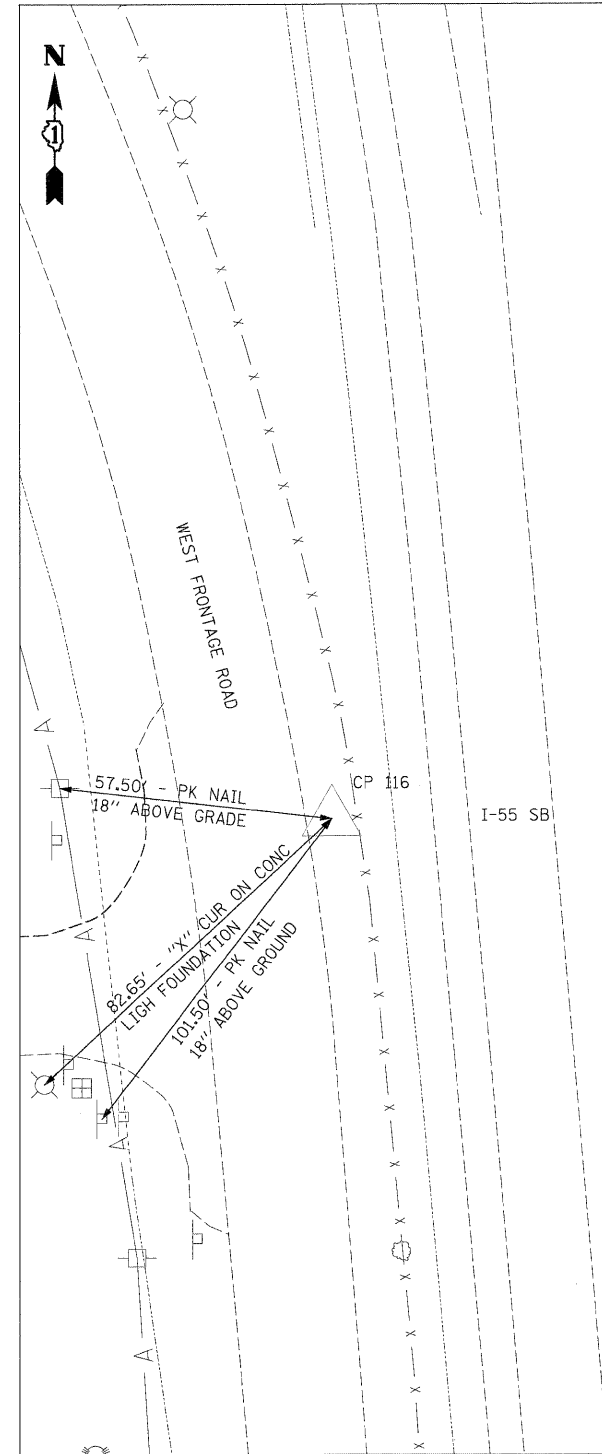
CP 212

N 1726715.05
 E 1022751.39
 STA 1077+01.86
 OFF 127.82' RT
 ELEV 543.42



CP 215

N 1728506.27
 E 1022699.11
 STA 1094+91.74
 OFF 127.03' RT
 ELEV 554.12



CP 116

N 1729102.61
 E 1022441.33
 STA 1101+02.50
 OFF 92.77' LT
 ELEV 551.55

FILE NAME =	USER NAME = TKluegel
D160C31-SHT-ATB07.dgn	
PLOT SCALE = 1:200	
PLOT DATE = 12/11/2009	

DESIGNED - TRK	REVISED -
DRAWN - TRK	REVISED -
CHECKED - DLT	REVISED -
DATE - 12/18/09	REVISED -

**STATE OF ILLINOIS
 DEPARTMENT OF TRANSPORTATION**

ALIGNMENTS, TIES, AND BENCHMARKS

SCALE: 1"=20' SHEET NO. 7 OF 9 SHEETS STA. TO STA.

F.A.I. RTE.	SECTION	COUNTY	TOTAL SHEETS	SHEET NO.
55	(99-1&2)AC-3	WILL	524	35
CONTRACT NO. 60C31				
FED. ROAD DIST. NO. 1 ILLINOIS FED. AID PROJECT				