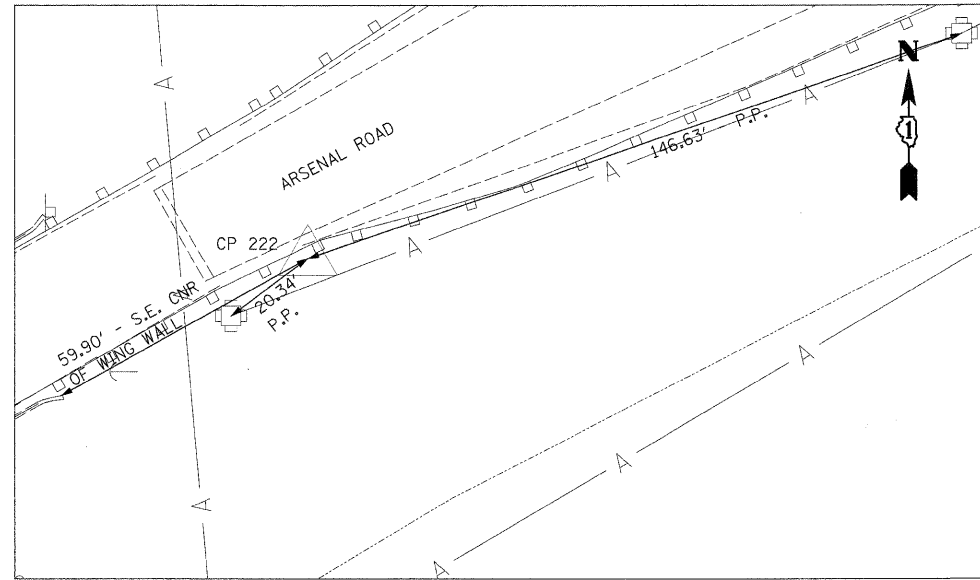
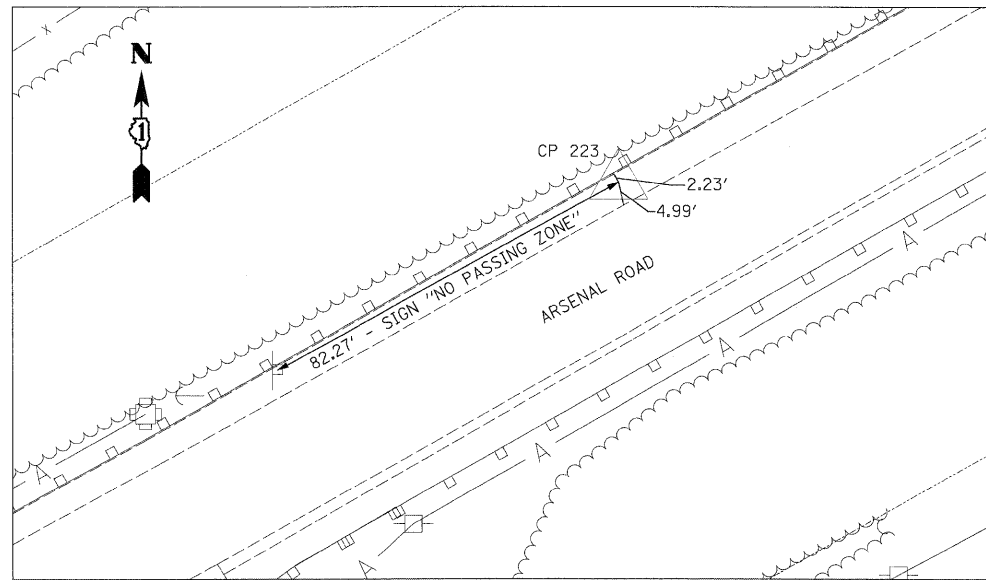


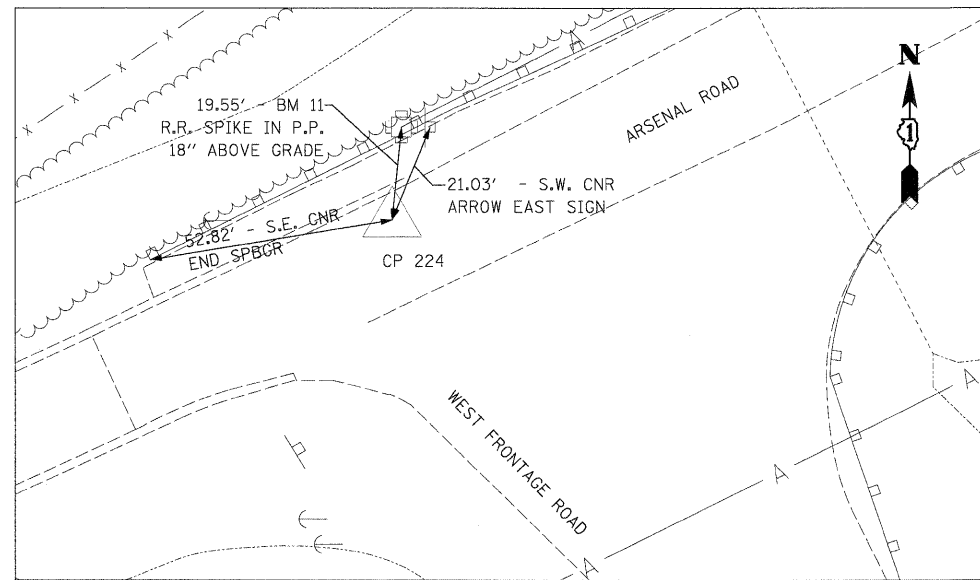
**CP 221**  
 N 1731085.79  
 E 1022939.09  
 STA 1120+59.55  
 OFF 596.23' RT  
 ELEV 555.27



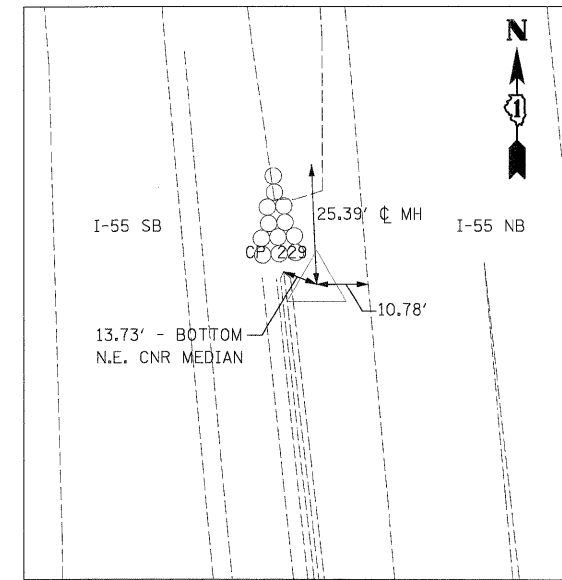
**CP 222**  
 N 1730819.15  
 E 1022538.84  
 STA 1118+08.78  
 OFF 181.43' RT  
 ELEV 563.33



**CP 223**  
 N 1730560.56  
 E 1022013.06  
 STA 1115+91.59  
 OFF 362.19' LT  
 ELEV 561.29



**CP 224**  
 N 1730315.32  
 E 1021579.16  
 STA 1113+95.19  
 OFF 816.44' LT  
 ELEV 548.19



**CP 229**  
 N 1730548.23  
 E 1022385.77  
 STA 1115+48.45  
 OFF 8.15' RT  
 ELEV 544.72

FILE NAME = D:\60C31-SHT-ATB09.dgn	USER NAME = TKluegel	DESIGNED - TRK	REVISED -
PLOT SCALE = 1:20	CHECKED - DLT	DRAWN - TRK	REVISED -
PLOT DATE = 12/11/2009	DATE - 12/18/09	CHECKED - DLT	REVISED -
		DATE - 12/18/09	REVISED -

**STATE OF ILLINOIS  
 DEPARTMENT OF TRANSPORTATION**

**ALIGNMENTS, TIES, AND BENCHMARKS**

SCALE: 1"=20' SHEET NO. 9 OF 9 SHEETS STA. TO STA.

F.A.I. RTE.	SECTION	COUNTY	TOTAL SHEETS	SHEET NO.
55	(99-1&2)AC-3	WILL	524	37
FED. ROAD DIST. NO. 1 ILLINOIS FED. AID PROJECT			CONTRACT NO. 60C31	