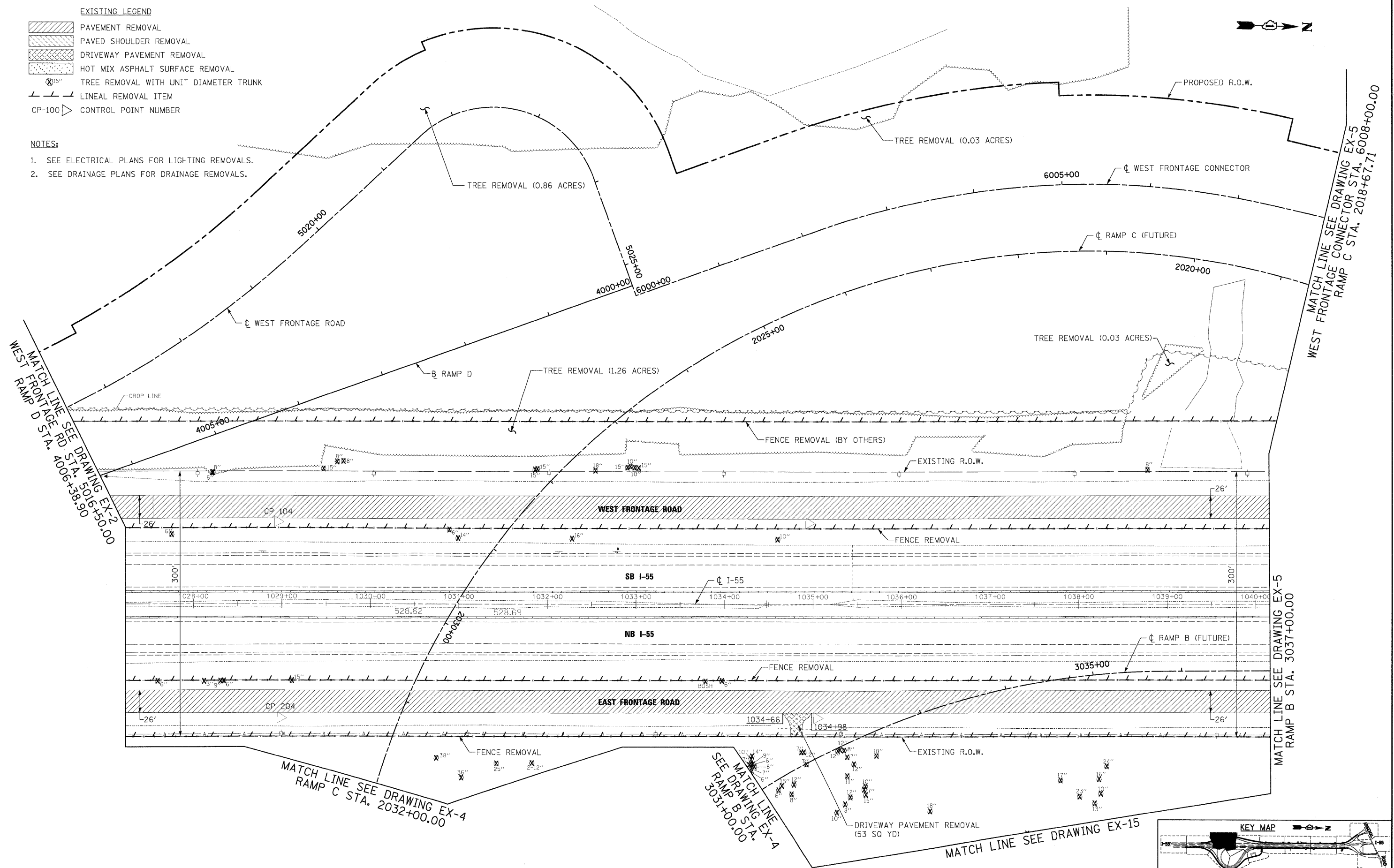


- EXISTING LEGEND**
- PAVEMENT REMOVAL
 - PAVED SHOULDER REMOVAL
 - DRIVEWAY PAVEMENT REMOVAL
 - HOT MIX ASPHALT SURFACE REMOVAL
 - TREE REMOVAL WITH UNIT DIAMETER TRUNK
 - LINEAL REMOVAL ITEM
 - CP-100 CONTROL POINT NUMBER

- NOTES:**
1. SEE ELECTRICAL PLANS FOR LIGHTING REMOVALS.
 2. SEE DRAINAGE PLANS FOR DRAINAGE REMOVALS.



McDonough Associates Inc.
 Engineers / Architects
 130 East Randolph Street, Chicago, Illinois 60601

FILE NAME = D162C31-SHT-REM23.dgn

USER NAME = TKJuegel
 PLOT SCALE = 1:50
 PLOT DATE = 12/11/2009

DESIGNED - JTF
 DRAWN - JTF
 CHECKED - DLT
 DATE - 12/18/09

REVISED -
 REVISED -
 REVISED -
 REVISED -

**STATE OF ILLINOIS
 DEPARTMENT OF TRANSPORTATION**

EXISTING PLAN AND REMOVALS

SCALE: 1"=50' SHEET NO. 3 OF 15 SHEETS STA. TO STA.

F.A.I. RTE.	SECTION	COUNTY	TOTAL SHEETS	SHEET NO.
55	(99-1&2)AC-3	WILL	524	40
CONTRACT NO. 60C31				
FED. ROAD DIST. NO. 1 ILLINOIS FED. AID PROJECT				

FINAL