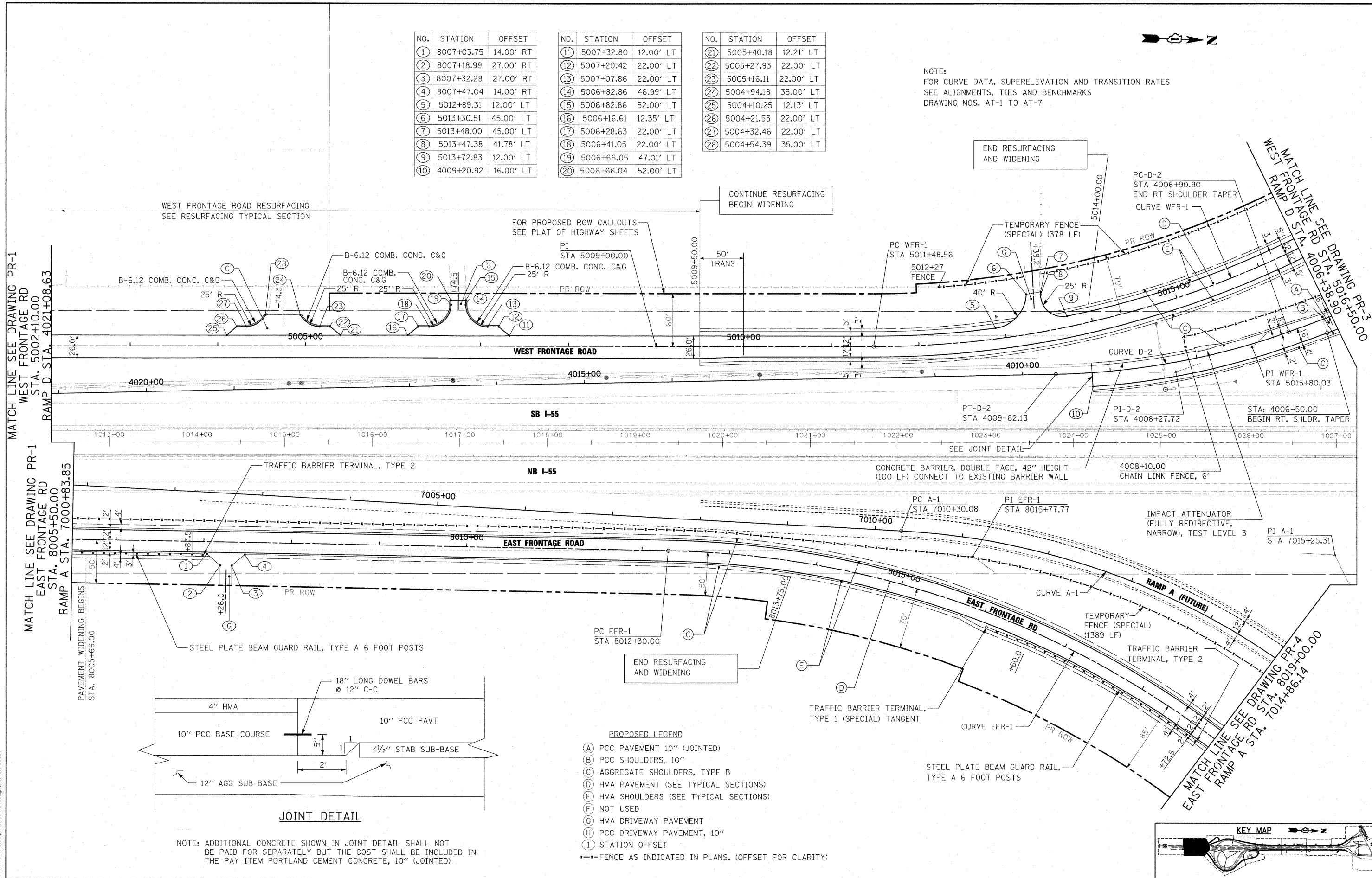


NO.	STATION	OFFSET	NO.	STATION	OFFSET	NO.	STATION	OFFSET
1	8007+03.75	14.00' RT	11	5007+32.80	12.00' LT	21	5005+40.18	12.21' LT
2	8007+18.99	27.00' RT	12	5007+20.42	22.00' LT	22	5005+27.93	22.00' LT
3	8007+32.28	27.00' RT	13	5007+07.86	22.00' LT	23	5005+16.11	22.00' LT
4	8007+47.04	14.00' RT	14	5006+82.86	46.99' LT	24	5004+94.18	35.00' LT
5	5012+89.31	12.00' LT	15	5006+82.86	52.00' LT	25	5004+10.25	12.13' LT
6	5013+30.51	45.00' LT	16	5006+16.61	12.35' LT	26	5004+21.53	22.00' LT
7	5013+48.00	45.00' LT	17	5006+28.63	22.00' LT	27	5004+32.46	22.00' LT
8	5013+47.38	41.78' LT	18	5006+41.05	22.00' LT	28	5004+54.39	35.00' LT
9	5013+72.83	12.00' LT	19	5006+66.05	47.01' LT			
10	4009+20.92	16.00' LT	20	5006+66.04	52.00' LT			

NOTE:  
FOR CURVE DATA, SUPERELEVATION AND TRANSITION RATES  
SEE ALIGNMENTS, TIES AND BENCHMARKS  
DRAWING NOS. AT-1 TO AT-7



McDonough Associates Inc.  
Engineers / Architects  
130 East Randolph Street, Chicago, Illinois 60601

FILE NAME = D:\00\31-SHIT-PLAN02.dgn  
USER NAME = j\_tour  
DESIGNED - JTF  
DRAWN - JTF  
CHECKED - DLT  
PLOT DATE = 1/19/2010

REVISIONS  
REVISED -  
REVISED -  
REVISED -  
REVISED -

STATE OF ILLINOIS  
DEPARTMENT OF TRANSPORTATION

PROPOSED PLAN

SCALE: 1"=50' SHEET NO. 2 OF 15 SHEETS STA. TO STA.

F.A.I. RTE.	SECTION	COUNTY	TOTAL SHEETS	SHEET NO.
55	(99-1&2)A-C-3	WILL	524	54
CONTRACT NO. 60C31				
FED. ROAD DIST. NO. 1 ILLINOIS FED. AID PROJECT				