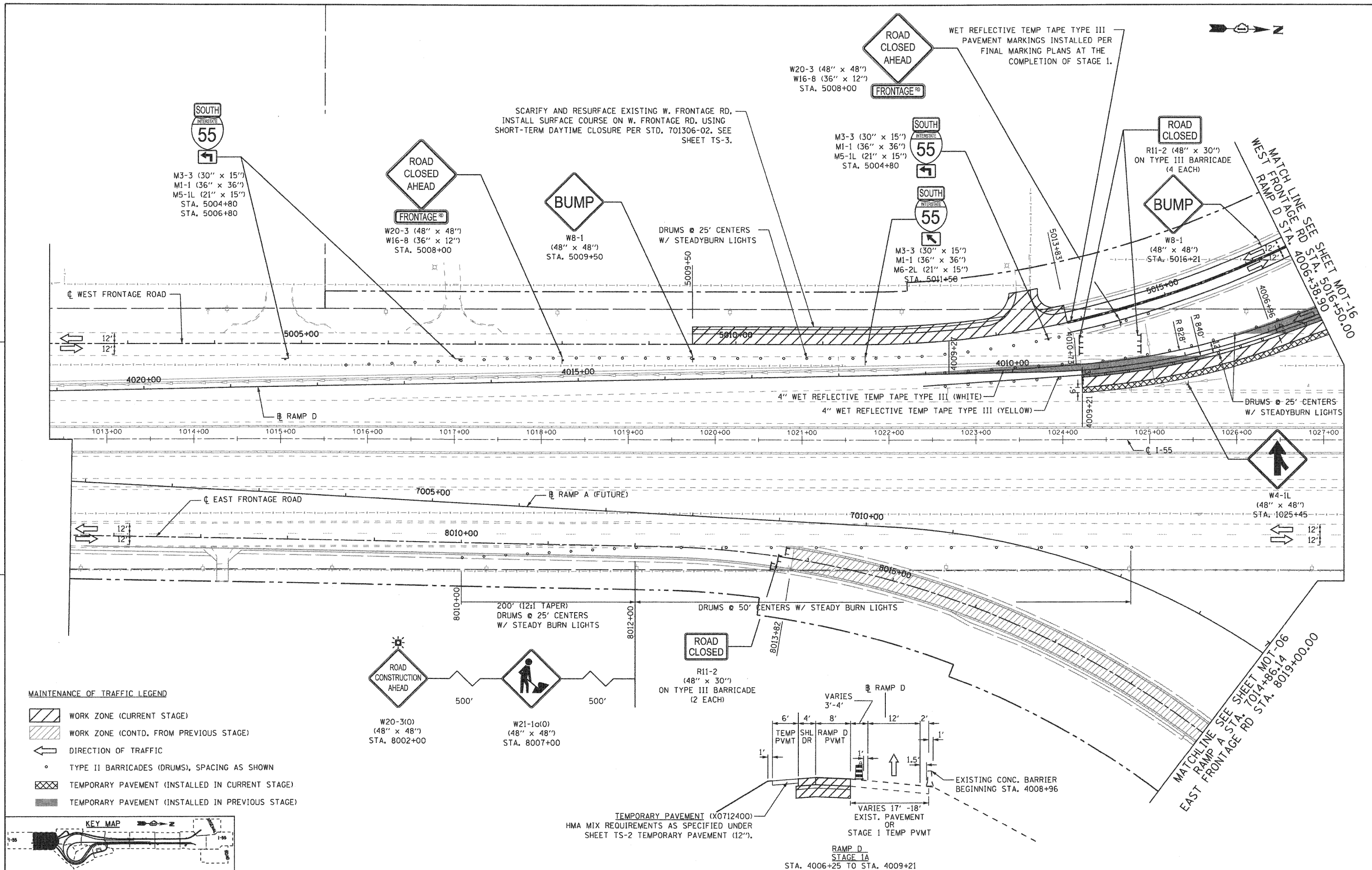
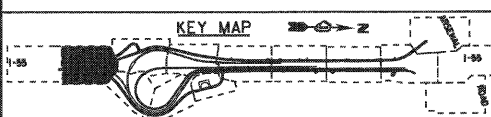


**EJM ENGINEERING, INC.**  
411 South Wells Street Suite 800  
Chicago, Illinois 60607



- MAINTENANCE OF TRAFFIC LEGEND**
- WORK ZONE (CURRENT STAGE)
  - WORK ZONE (CONTD. FROM PREVIOUS STAGE)
  - DIRECTION OF TRAFFIC
  - TYPE II BARRICADES (DRUMS), SPACING AS SHOWN
  - TEMPORARY PAVEMENT (INSTALLED IN CURRENT STAGE)
  - TEMPORARY PAVEMENT (INSTALLED IN PREVIOUS STAGE)



FILE NAME = ...XD160C31-SHT-STAGING1A02.dgn	USER NAME = gra	DESIGNED - GR	REVISED -
		DRAWN - GR	REVISED -
		CHECKED - RY	REVISED -
		DATE - 12/18/2009	REVISED -

**STATE OF ILLINOIS  
DEPARTMENT OF TRANSPORTATION**

**MAINTENANCE OF TRAFFIC  
STAGE 1A**

SCALE: 1"=50' SHEET NO. 1 OF 2 SHEETS STA. TO STA.

F.A.I. RTE.	SECTION	COUNTY	TOTAL SHEETS	SHEET NO.
55	(99-1&2)-3	WILL	524	101
CONTRACT NO. 60C31				

FED. ROAD DIST. NO. 1 ILLINOIS FED. AID PROJECT