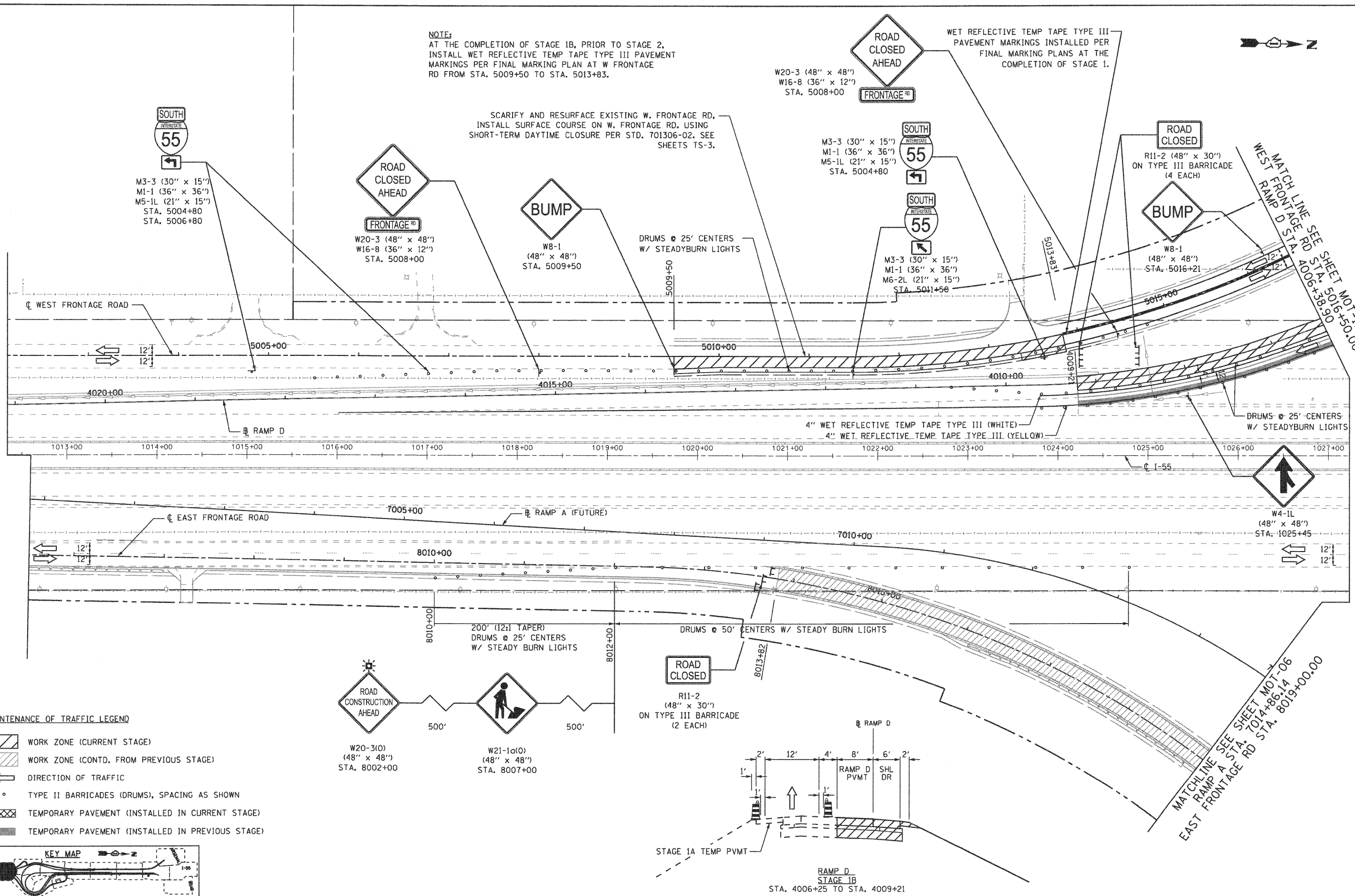


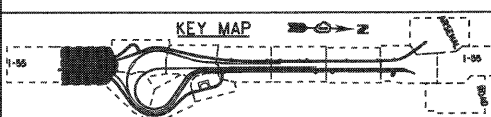
**NOTE:**  
 AT THE COMPLETION OF STAGE 1B, PRIOR TO STAGE 2,  
 INSTALL WET REFLECTIVE TEMP TAPE TYPE III  
 MARKINGS PER FINAL MARKING PLAN AT W FRONTAGE  
 RD FROM STA. 5009+50 TO STA. 5013+83.

SCARIFY AND RESURFACE EXISTING W. FRONTAGE RD,  
 INSTALL SURFACE COURSE ON W. FRONTAGE RD. USING  
 SHORT-TERM DAYTIME CLOSURE PER STD. 701306-02. SEE  
 SHEETS TS-3.

WET REFLECTIVE TEMP TAPE TYPE III  
 PAVEMENT MARKINGS INSTALLED PER  
 FINAL MARKING PLANS AT THE  
 COMPLETION OF STAGE 1.



- MAINTENANCE OF TRAFFIC LEGEND**
- WORK ZONE (CURRENT STAGE)
  - WORK ZONE (CONTD. FROM PREVIOUS STAGE)
  - DIRECTION OF TRAFFIC
  - TYPE II BARRICADES (DRUMS), SPACING AS SHOWN
  - TEMPORARY PAVEMENT (INSTALLED IN CURRENT STAGE)
  - TEMPORARY PAVEMENT (INSTALLED IN PREVIOUS STAGE)



FILE NAME = ...ND160C31-SHT-STAGING1802.dgn	USER NAME = grol	DESIGNED - GR	REVISED -
		DRAWN - GR	REVISED -
		CHECKED - RY	REVISED -
		DATE - 12/18/2009	REVISED -

**STATE OF ILLINOIS  
 DEPARTMENT OF TRANSPORTATION**

**MAINTENANCE OF TRAFFIC  
 STAGE 1B**

SCALE: 1"=50' SHEET NO. 1 OF 2 SHEETS STA. TO STA.

F.A.1 RTE.	SECTION	COUNTY	TOTAL SHEETS	SHEET NO.
55	(99-1&2)-3	WILL	524	103
FED. ROAD DIST. NO. 1 [ILLINOIS] FED. AID PROJECT			CONTRACT NO. 60C31	