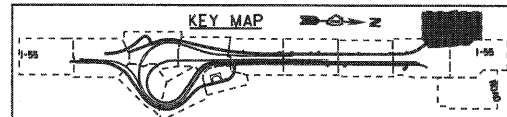
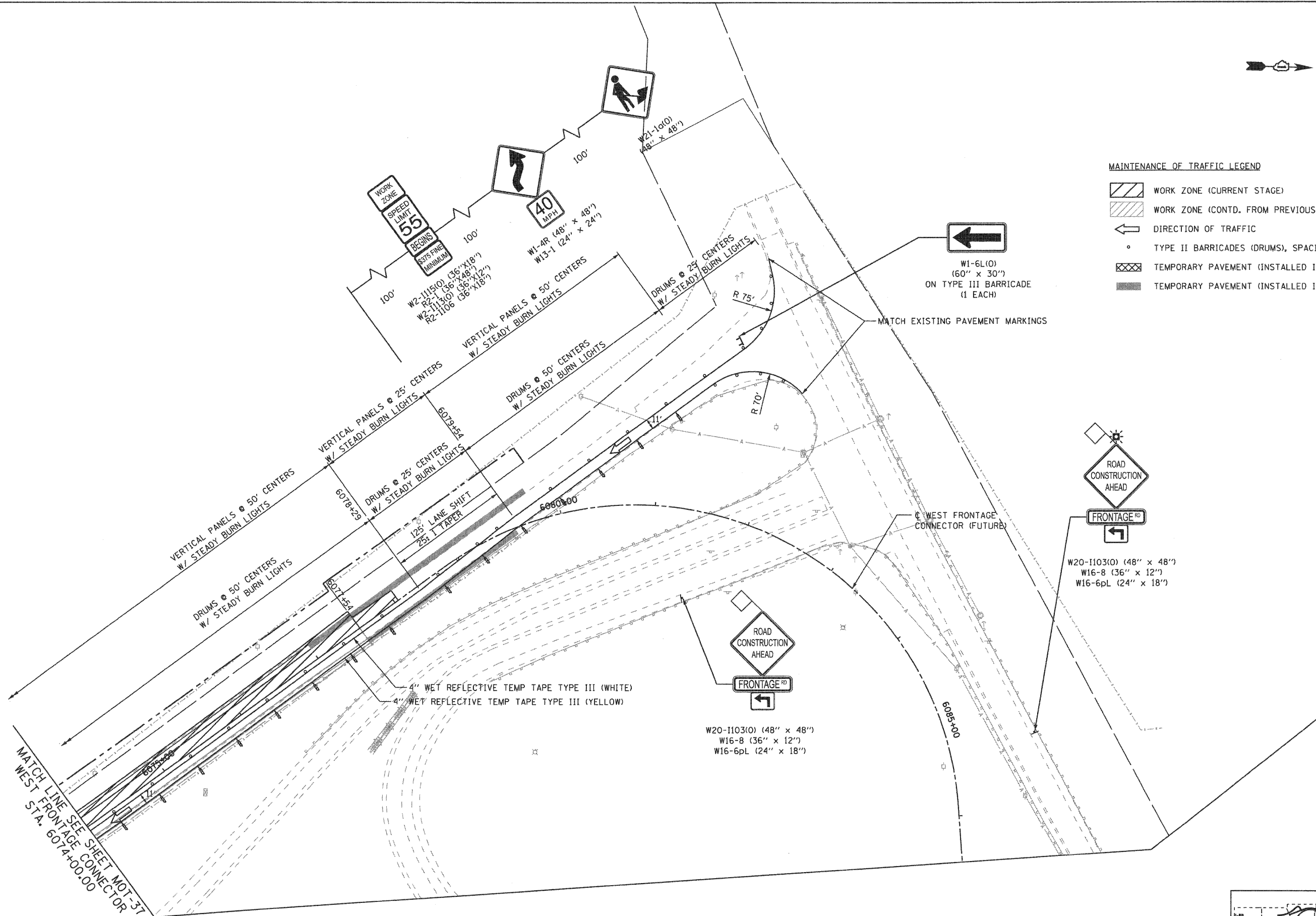


**EJM ENGINEERING, INC.**  
411 South Wells Street Suite 800  
Chicago, Illinois 60607



**MAINTENANCE OF TRAFFIC LEGEND**

- WORK ZONE (CURRENT STAGE)
- WORK ZONE (CONTD. FROM PREVIOUS STAGE)
- DIRECTION OF TRAFFIC
- TYPE II BARRICADES (DRUMS), SPACING AS SHOWN
- TEMPORARY PAVEMENT (INSTALLED IN CURRENT STAGE)
- TEMPORARY PAVEMENT (INSTALLED IN PREVIOUS STAGE)



FILE NAME = ...ND160C31-SHT-STAGING312.dgn	USER NAME = gmas	DESIGNED - GR	REVISED -
		DRAWN - GR	REVISED -
		CHECKED - RY	REVISED -
		DATE - 12/16/2009	REVISED -

**STATE OF ILLINOIS  
DEPARTMENT OF TRANSPORTATION**

**MAINTENANCE OF TRAFFIC  
STAGE 3**

SCALE: 1"=50' SHEET NO. 10 OF 10 SHEETS STA. TO STA.

F.A.I. RTE.	SECTION	COUNTY	TOTAL SHEETS	SHEET NO.
55	(99-1&2)-3	WILL	524	124
FED. ROAD DIST. NO. 1 ILLINOIS FED. AID PROJECT			CONTRACT NO. 60C31	