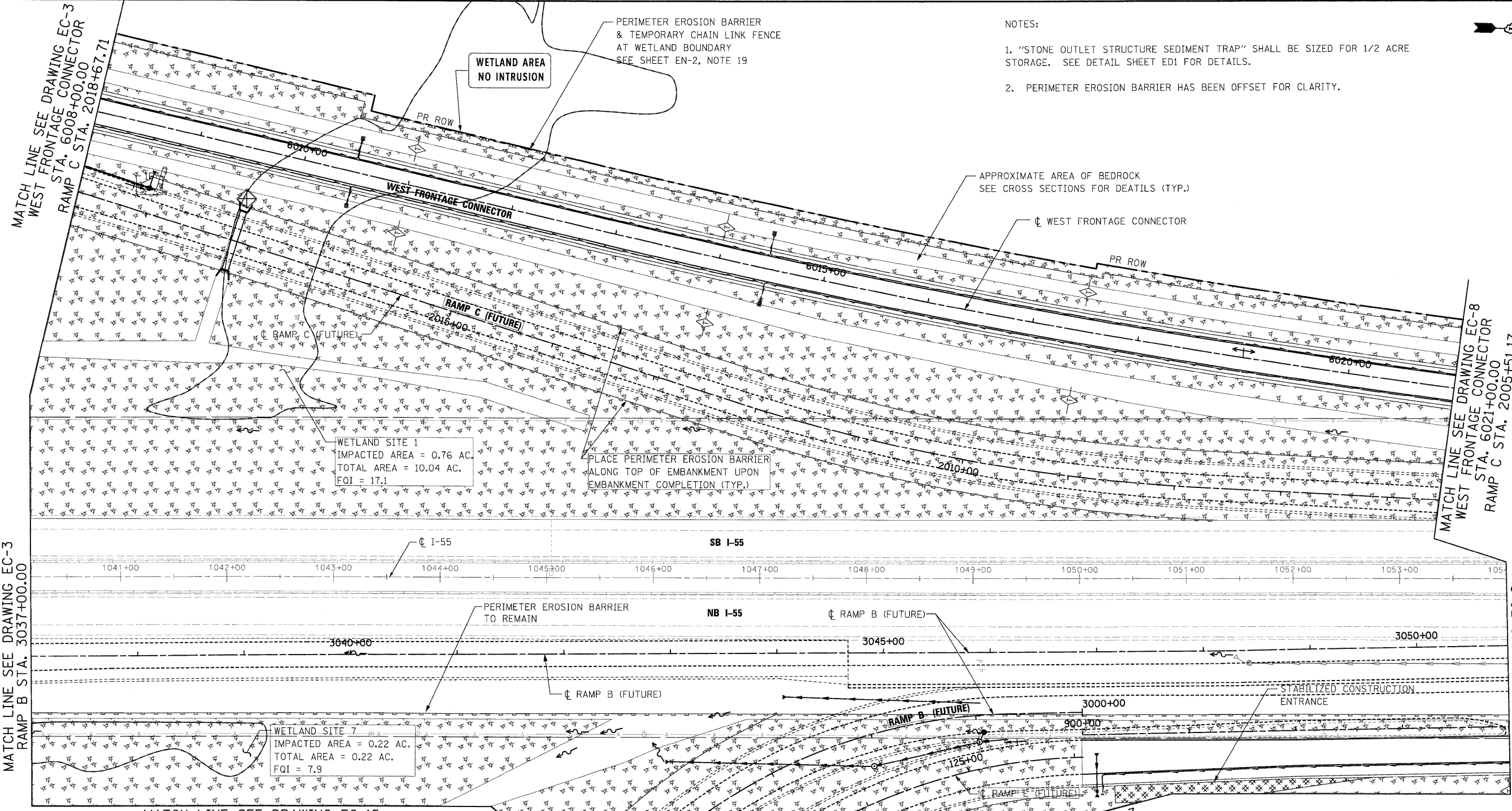
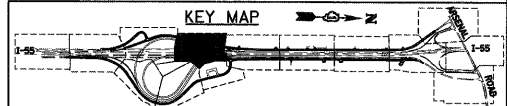




- NOTES:
1. "STONE OUTLET STRUCTURE SEDIMENT TRAP" SHALL BE SIZED FOR 1/2 ACRE STORAGE. SEE DETAIL SHEET ED1 FOR DETAILS.
  2. PERIMETER EROSION BARRIER HAS BEEN OFFSET FOR CLARITY.



- EROSION CONTROL LEGEND**
- INLET AND PIPE PROTECTION
  - TEMPORARY DITCH CHECK
  - PERIMETER EROSION BARRIER
  - TEMPORARY EROSION CONTROL SEEDING WITH MULCH METHOD 2
  - TEMPORARY CHAIN LINK FENCE
  - EC, TEMPORARY PIPE SLOPE DRAIN
  - IF INLET FILTER
  - STABILIZED CONSTRUCTION ENTRANCE
  - STONE OUTLET STRUCTURE SEDIMENT TRAP
  - DITCH FLOW
  - SWALE
  - DRAINAGE SUMMIT



**McDonough Associates Inc.**  
 Engineers / Architects  
 130 East Randolph Street, Chicago, Illinois 60601

FILE NAME = D:\60C31-SHT-EROS15.dgn	USER NAME = Tkluegel	DESIGNED - JCL	REVISED -
PLOT SCALE = 1:50	DRAWN - JCL	CHECKED - DLT	REVISED -
PLOT DATE = 12/11/2009	DATE - 12/18/09		REVISED -

**STATE OF ILLINOIS  
DEPARTMENT OF TRANSPORTATION**

**EROSION AND SEDIMENT CONTROL PLAN**

SCALE: 1"=50' SHEET NO. 5 OF 15 SHEETS STA. TO STA.

F.A.I. RTE. 55	SECTION (99-1&2)AC-3	COUNTY WILL	TOTAL SHEETS 524	SHEET NO. 132
FED. ROAD DIST. NO. 1 ILLINOIS FED. AID PROJECT			CONTRACT NO. 60C31	

**FINAL**