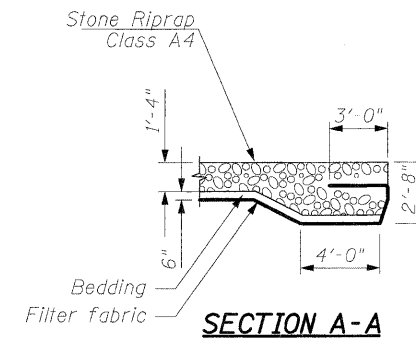
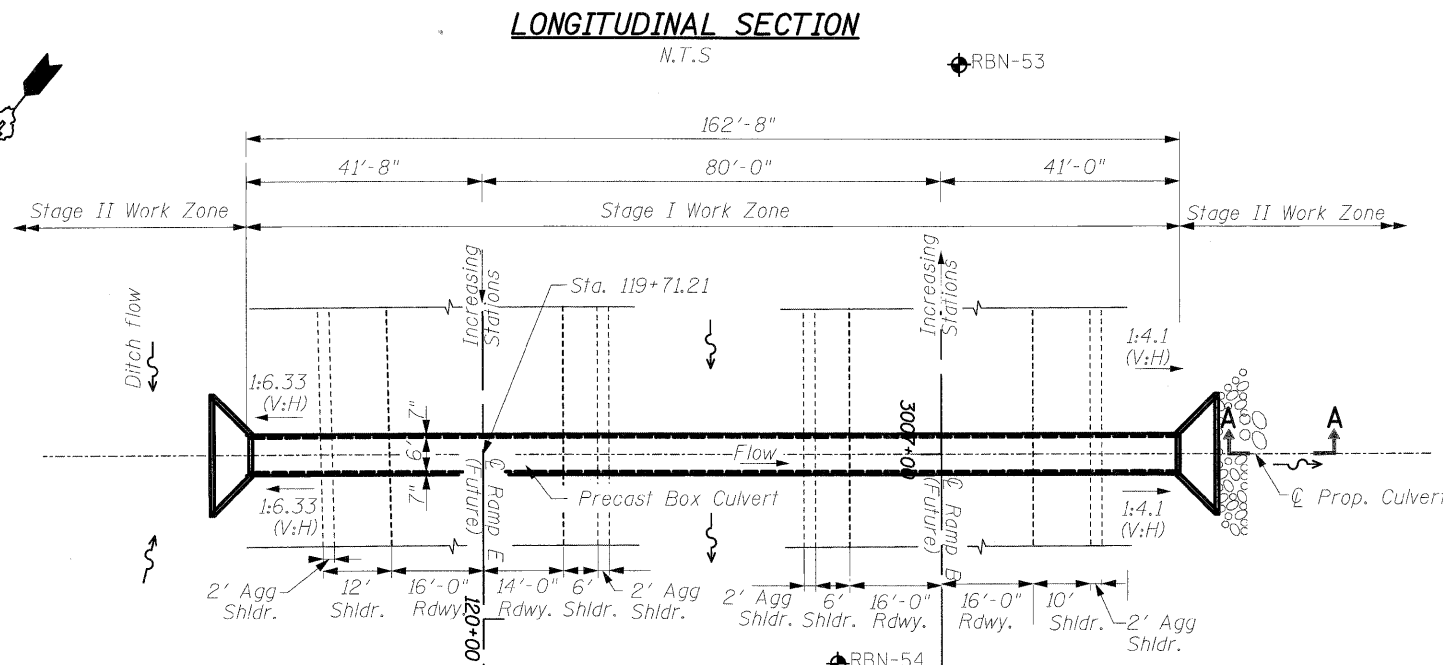
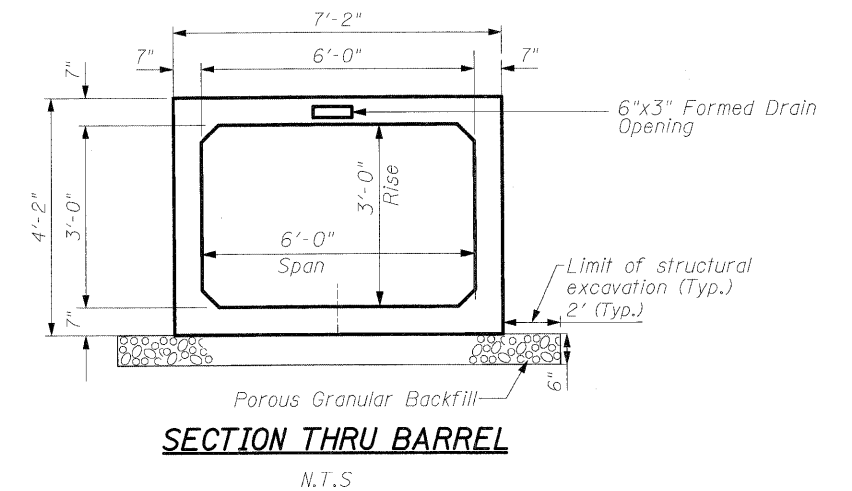
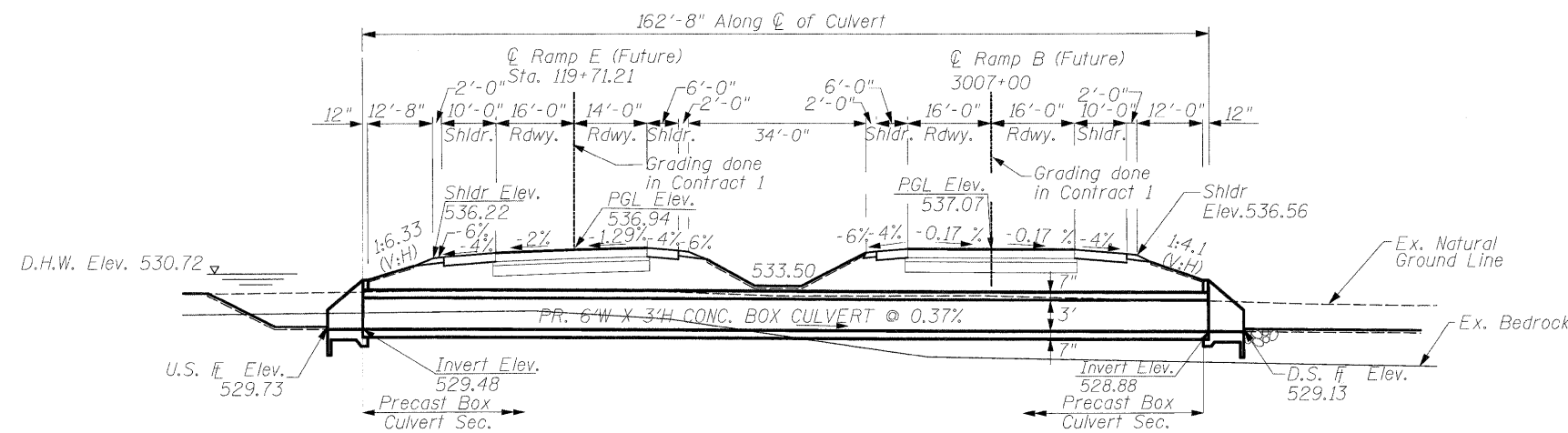


Bench Mark: BM 9
 Box Cut on S. corner of traffic handhole foundation at the SE corner
 of Arsenal Road and E. Frontage Road. Elev.= 545.485
 Existing Structures: None

STATE OF ILLINOIS
 DEPARTMENT OF TRANSPORTATION



DESIGN SPECIFICATIONS
 AASHTO 2002

LOADING HS-20-44
 Allow 50 lbs/sq. ft. for future wearing surface.

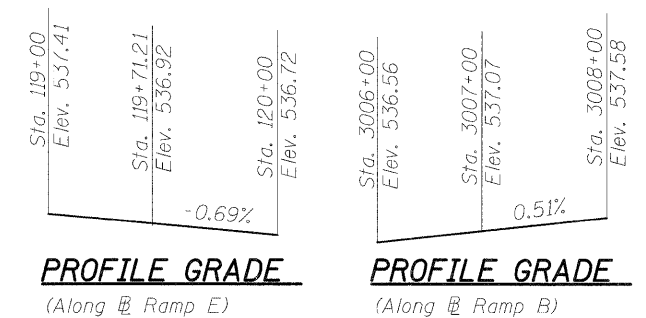
DESIGN STRESSES
 FIELD UNITS

Cast-In-Place Units
 $f'_c = 3,500$ psi (Concrete)
 $f_y = 60,000$ psi (Reinforcement)

Precast Units
 $f'_c = 5,000$ psi (Concrete)
 $f_y = 65,000$ psi (Welded Wire Fabric)

SEISMIC DATA

Seismic Performance Zone (SPC) = A
 Bedrock Acceleration Coeff.(A) = 0.04g
 Site Coefficient (S) = 1.0



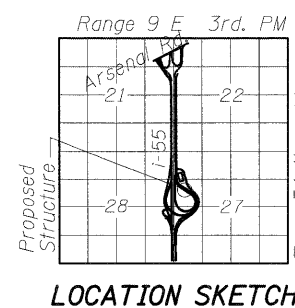
**GENERAL PLAN & ELEVATION-RAMP B
 OVER UNNAMED DITCH
 F.A.I. ROUTE 55 - SEC. (99-1&2)AC-3
 WILL COUNTY
 STATION 3007+00**

LEGEND
 Soil Boring Location

WATERWAY INFORMATION

Drainage Area = 0.0162 sq. mi. Low Grade Elev. 536.22 @ Sta. 3007+00 Ramp B

Flood	Freq. Yr.	Q C.F.S.	Opening Sq.Ft.		Nat. H.W.E.	Head -Ft.			Headwater El.
			Exist.	Prop.		Exist.	Prop.	Exist.	
Design	50	24.8	N/A	4.5	530.00	N/A	0.72	N/A	530.72
Base	100	29.1	N/A	5.1	530.09	N/A	0.77	N/A	530.86
Overtopping		190.9							



SINGH
 SINGH & ASSOCIATES, INC.
 CONSULTING ENGINEERS

SHEET NO.
 SHEETS

F.A.I. RTE.	SECTION	COUNTY	TOTAL SHEETS	SHEET NO.
55	(99-1&2)AC-3	WILL	524	330
Sta. 3007+00 (Ramp B)		CONTRACT NO. 60C31		
FED. RD. DIST. NO. 1	ILLINOIS	FED. AID PROJECT		