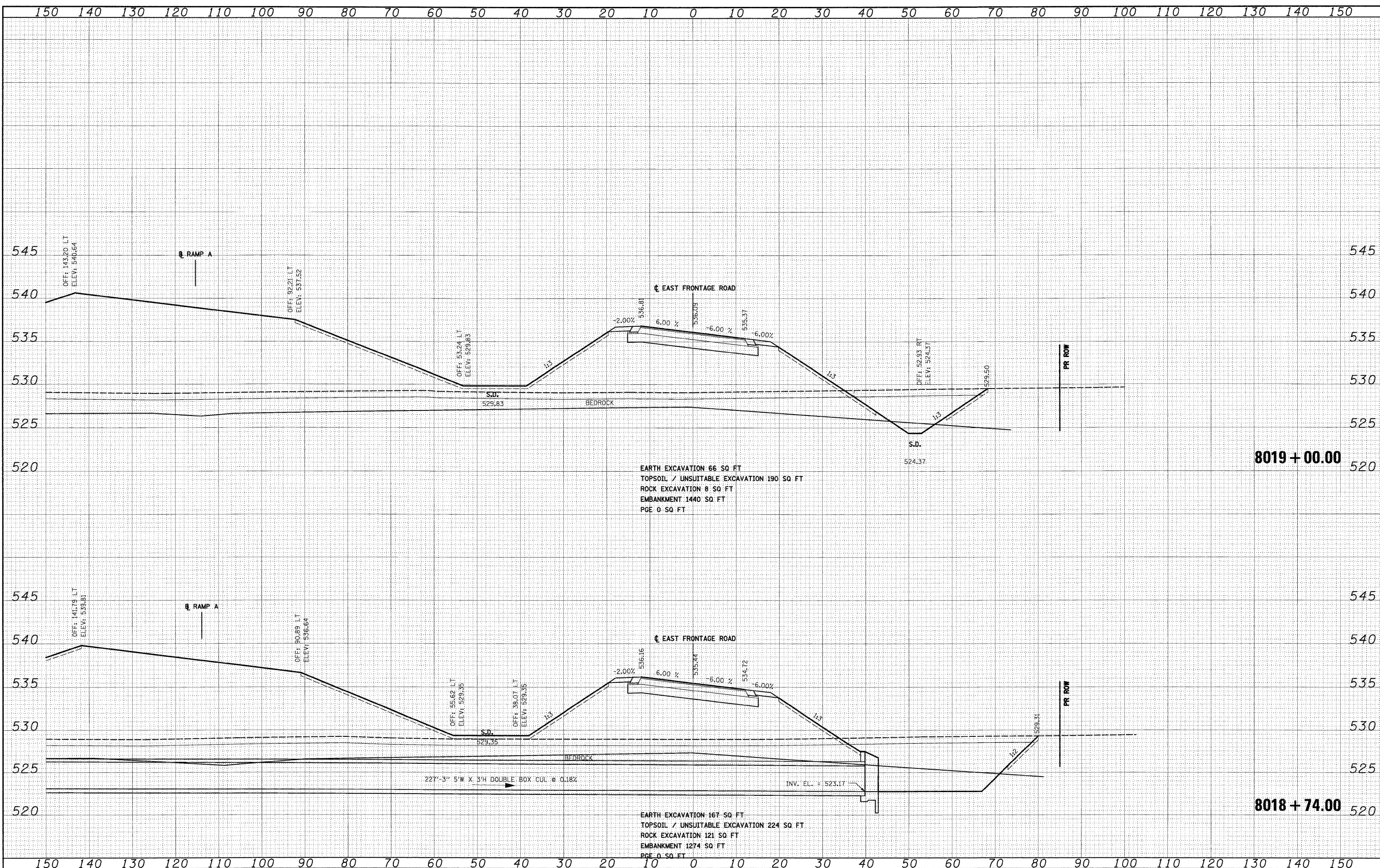


FINAL	DATE
SURVEYED	BY
PLOTTED	DATE
NOTE BOOK	NO.
AREAS	
CHECKED	

ORIGINAL	DATE
SURVEYED	BY
PLOTTED	DATE
NOTE BOOK	NO.
AREAS	
CHECKED	

McDonough Associates Inc.  
 Engineers/Architects  
 100 East Randolph Street, Chicago, Illinois 60601



EARTH EXCAVATION 66 SQ FT  
 TOPSOIL / UNSUITABLE EXCAVATION 190 SQ FT  
 ROCK EXCAVATION 8 SQ FT  
 EMBANKMENT 1440 SQ FT  
 PGE 0 SQ FT

EARTH EXCAVATION 167 SQ FT  
 TOPSOIL / UNSUITABLE EXCAVATION 224 SQ FT  
 ROCK EXCAVATION 121 SQ FT  
 EMBANKMENT 1274 SQ FT  
 PGE 0 SQ FT

FILE NAME = 0162C31-SHT-XSSH04.dgn  
 USER NAME = TKluegel

DESIGNED - TRK	REVISED -
DRAWN - TRK	REVISED -
CHECKED - DLT	REVISED -
DATE - 12/18/09	REVISED -

REVISED -
REVISED -
REVISED -
REVISED -

STATE OF ILLINOIS  
 DEPARTMENT OF TRANSPORTATION

EAST FRONTAGE ROAD

SCALE: 1"=10'H; 1"=5'V SHEET NO. 9 OF 30 SHEETS STA. 8018+74.00 TO STA. 8019+00.00

F.A.I. RTE.	SECTION	COUNTY	TOTAL SHEETS	SHEET NO.
55	(99-1&2)AC-3	WILL	524	437
CONTRACT NO. 60C31				
FED. ROAD DIST. NO. 1 ILLINOIS FED. AID PROJECT				

FINAL