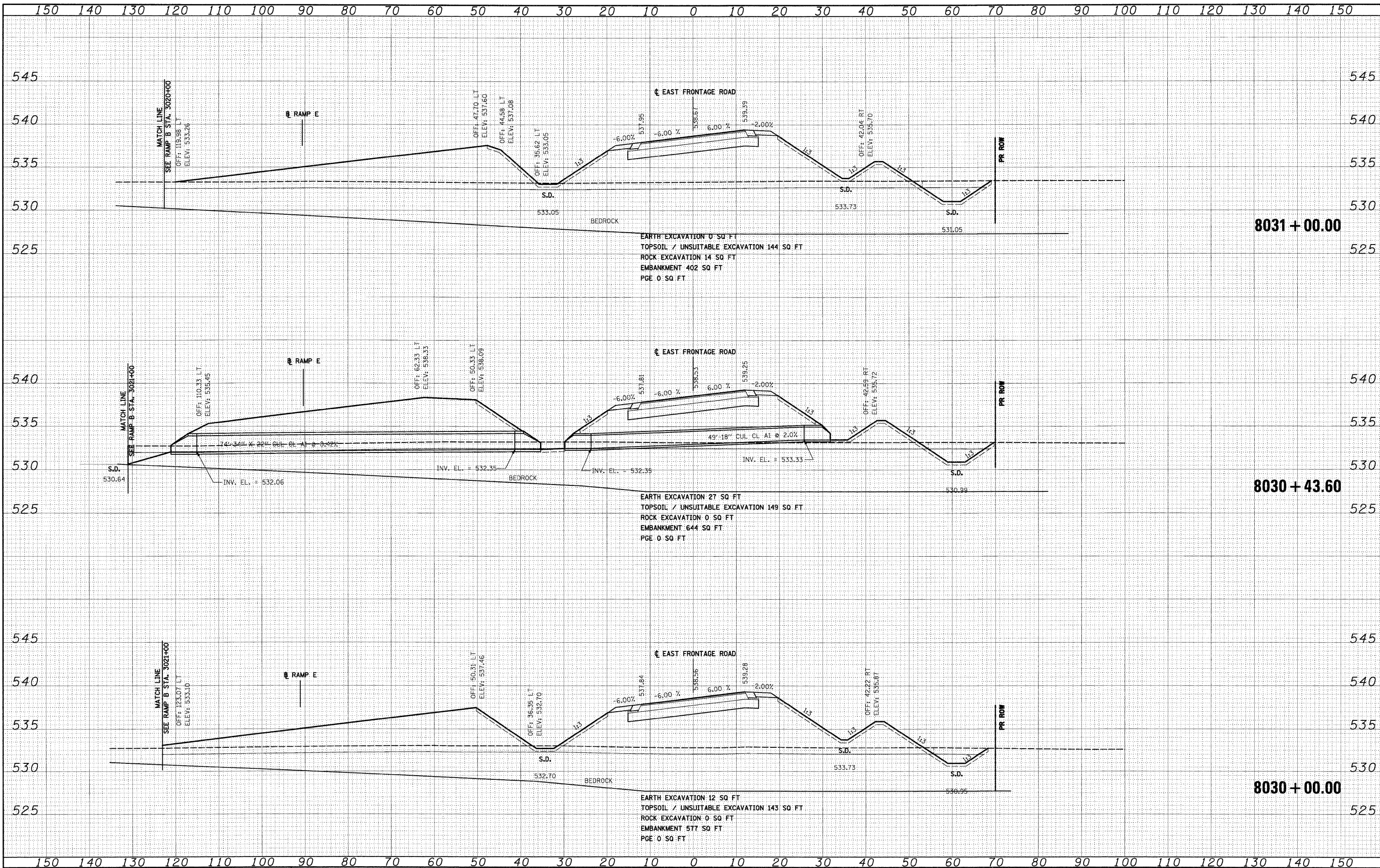


DATE	
BY	
SURVEYED	
PLOTTED	
NOTE BOOK	
AREAS CHECKED	
NO.	

DATE	
BY	
SURVEYED	
PLOTTED	
NOTE BOOK	
AREAS CHECKED	
NO.	



FILE NAME = D:\160C31-SHT-XSSH104.dgn  
 USER NAME = TKluigi

DESIGNED	TRK	REVISED	-
DRAWN	TRK	REVISED	-
CHECKED	DLT	REVISED	-
DATE	12/18/09	REVISED	-

STATE OF ILLINOIS  
DEPARTMENT OF TRANSPORTATION

EAST FRONTAGE ROAD

SCALE: 1"=10'H; 1"=5'V SHEET NO. 15 OF 30 SHEETS STA. 8030+00.00 TO STA. 8031+00.00

F.A.T. RTE.	SECTION	COUNTY	TOTAL SHEETS	SHEET NO.
55	(99-1&2)AC-3	WILL	524	443
CONTRACT NO. 60C31			ILLINOIS FED. AID PROJECT	