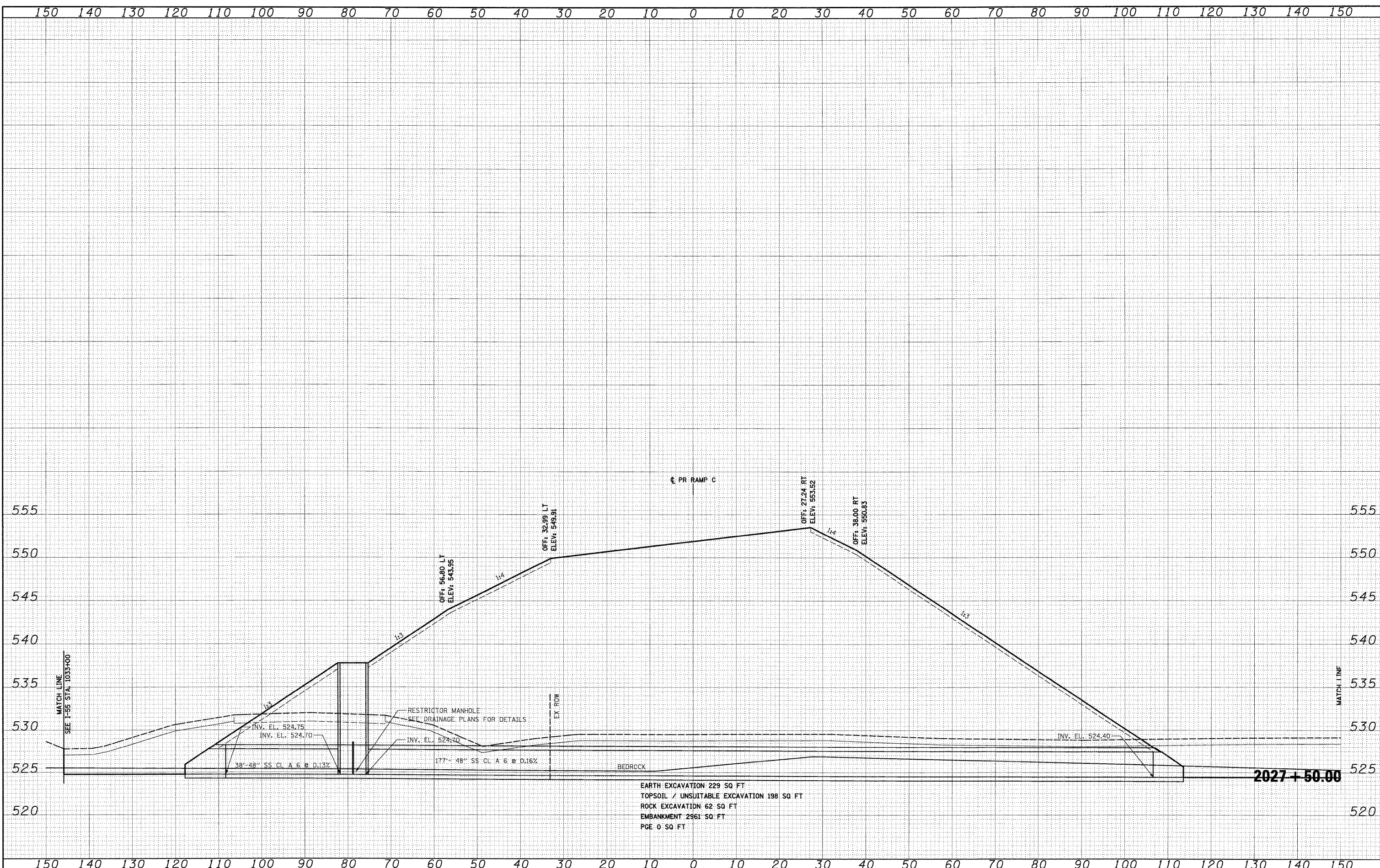


FINAL SURVEY	DATE
SURVEYED	BY
PLOTTED	
NOTE BOOK	
AREAS	
AREAS CHECKED	
NO.	

ORIGINAL SURVEY	DATE
SURVEYED	BY
PLOTTED	
NOTE BOOK	
AREAS	
AREAS CHECKED	
NO.	

McDonough Associates Inc.
 Engineers/Architects
 700 East Randolph Street, Chicago, Illinois 60601



FILE NAME = D:\60C31-SHT-XSSH106.dgn

USER NAME = TKluegel

DESIGNED - TRK
 DRAWN - TRK
 CHECKED - DLT
 DATE - 12/18/09

REVISED -
 REVISED -
 REVISED -
 REVISED -

**STATE OF ILLINOIS
 DEPARTMENT OF TRANSPORTATION**

RAMP C CROSS SECTIONS

SCALE: 1"=10'H; 1"=5' V SHEET NO. 14 OF 21 SHEETS STA. 2027+50.00 TO STA. 2027+50.00

F.A.I. RTE.	SECTION	COUNTY	TOTAL SHEETS	SHEET NO.
55	(99-1&2)AC-3	WILL	524	508
CONTRACT NO. 60C31				
FED. ROAD DIST. NO. 1 ILLINOIS FED. AID PROJECT				