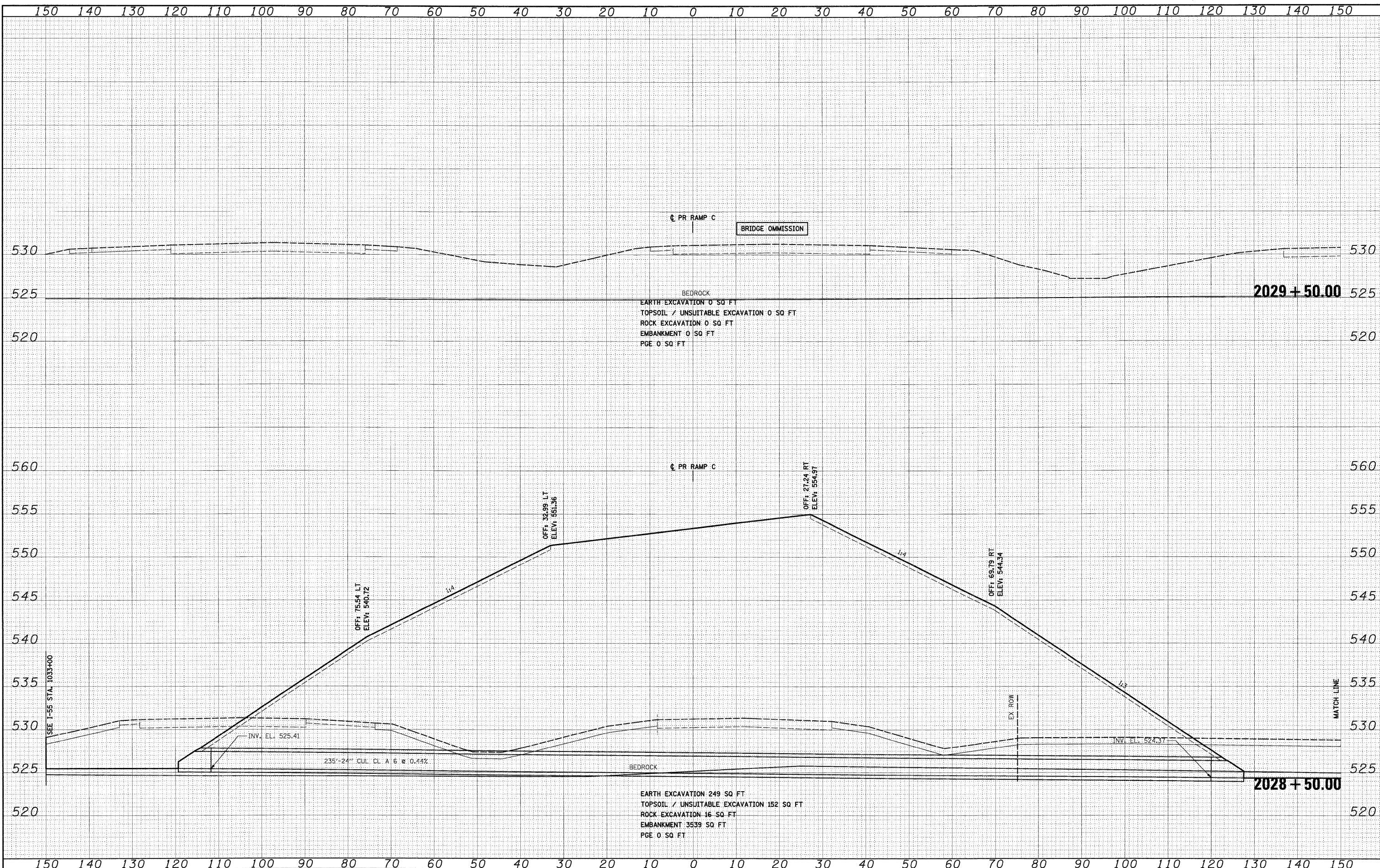


DATE	
BY	
FINAL SURVEY	
PLOTTED	
NOTE BOOK	
AREAS CHECKED	
NO.	

DATE	
BY	
ORIGINAL SURVEY	
PLOTTED	
NOTE BOOK	
AREAS CHECKED	
NO.	

McDonough Associates Inc.
 Engineers/Architects
 700 East Randolph Street, Chicago, Illinois 60601



2029 + 50.00
 BEDROCK
 EARTH EXCAVATION 0 SQ FT
 TOPSOIL / UNSUITABLE EXCAVATION 0 SQ FT
 ROCK EXCAVATION 0 SQ FT
 EMBANKMENT 0 SQ FT
 PGE 0 SQ FT

2028 + 50.00
 BEDROCK
 EARTH EXCAVATION 249 SQ FT
 TOPSOIL / UNSUITABLE EXCAVATION 152 SQ FT
 ROCK EXCAVATION 16 SQ FT
 EMBANKMENT 3539 SQ FT
 PGE 0 SQ FT

FILE NAME =	D:\182C31-SH1-XSSH106.dgn
USER NAME =	TKluigel
DESIGNED -	TRK
DRAWN -	TRK
CHECKED -	DLT
DATE -	12/18/09

REVISIED -	
REVISIED -	
REVISIED -	
REVISIED -	

DESIGNED -	TRK
DRAWN -	TRK
CHECKED -	DLT
DATE -	12/18/09

**STATE OF ILLINOIS
 DEPARTMENT OF TRANSPORTATION**

RAMP C CROSS SECTIONS

SCALE: 1"=10'H; 1"=5'V SHEET NO. 15 OF 21 SHEETS STA. 2028+50.00 TO STA. 2029+50.00

F.A.I. RTE.	SECTION	COUNTY	TOTAL SHEETS	SHEET NO.
55	(99-1&2)AC-3	WILL	524	509
CONTRACT NO. 60C31				
FED. ROAD DIST. NO. 1 ILLINOIS FED. AID PROJECT				