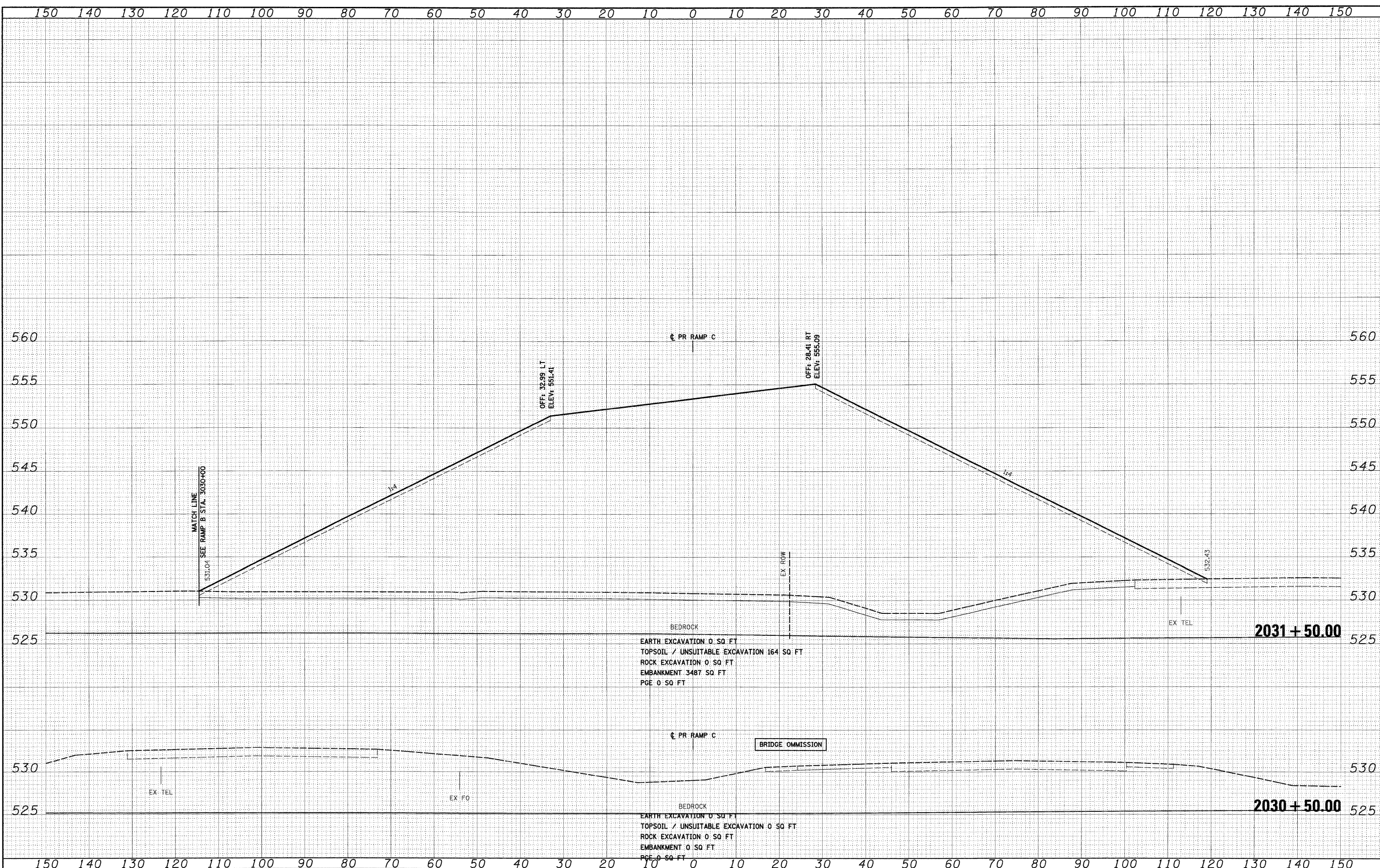


DATE	
BY	
SURVEYED	
PLOTTED	
NOTE BOOK	
AREAS	
AREAS CHECKED	

DATE	
BY	
SURVEYED	
PLOTTED	
NOTE BOOK	
AREAS	
AREAS CHECKED	

McDonough Associates Inc.
 Engineers, Architects
 100 East Randolph Street, Chicago, Illinois 60601



FILE NAME = 0160C31-SHT-XSSH106.dgn
 USER NAME = TKL:uegl

DESIGNED - TRK
 DRAWN - TRK
 CHECKED - DLT
 DATE - 12/18/09

REVISED -
 REVISED -
 REVISED -
 REVISED -

**STATE OF ILLINOIS
 DEPARTMENT OF TRANSPORTATION**

RAMP C CROSS SECTIONS

SCALE: 1"=10'H; 1"=5'V SHEET NO. 16 OF 21 SHEETS STA. 2030+50.00 TO STA. 2031+50.00

F.A.1	SECTION	COUNTY	TOTAL	SHEET
RTE.	(99-1&2)AC-3	WILL	SHEETS	NO.
55			524	510
			CONTRACT NO. 60C31	
FED. ROAD DIST. NO. 1 ILLINOIS FED. AID PROJECT				