
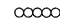
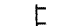


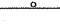
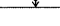

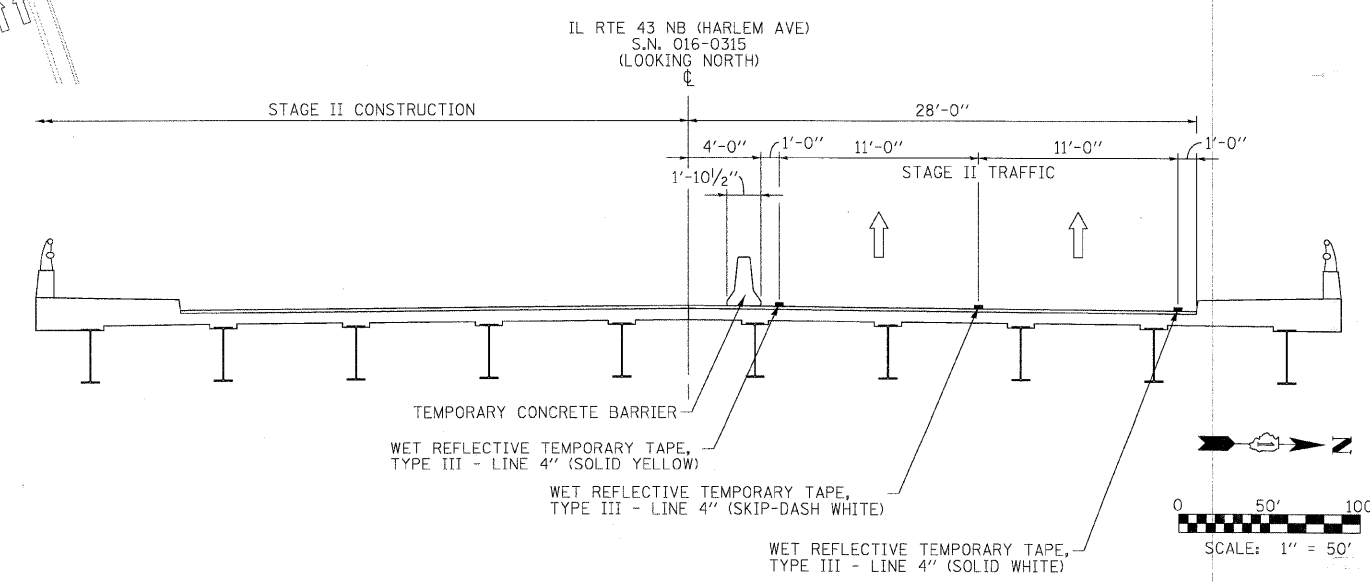
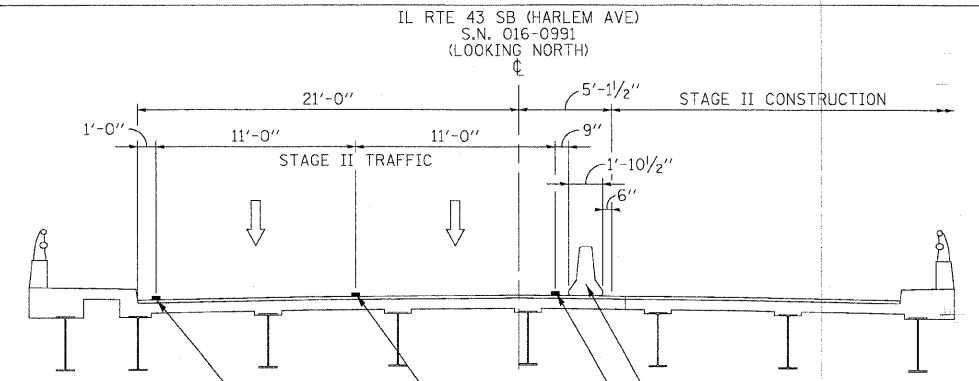
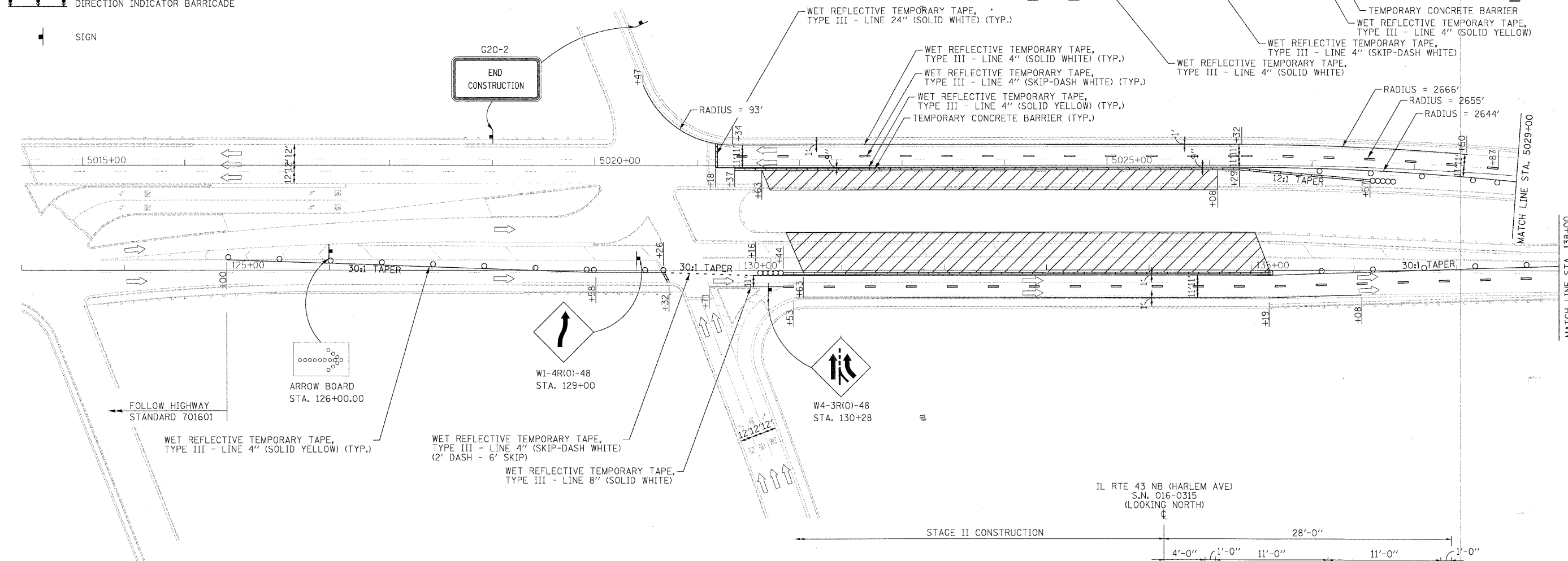


LEGEND

-  WORK AREA
-  IMPACT ATTENUATORS, TEMPORARY (FULLY REDIRECTIVE, NARROW), TEST LEVEL 3
-  TYPE III BARRICADE
-  TYPE I OR II BARRICADE
-  TEMPORARY CONCRETE BARRIER
-  DRUM WITH STEADY BURN MONODIRECTIONAL LIGHT
-  DIRECTION INDICATOR BARRICADE
-  SIGN



- STAGE II CONSTRUCTION:**
- REMOVE CONFLICTING EXISTING PAVEMENT MARKINGS, RAISED REFLECTIVE PAVEMENT MARKERS AND SIGNS USING FLAGGERS AND ADVANCED SIGNING SIMILAR TO HIGHWAY STANDARD 701426.
 - PUT THREE (3) "ROAD CONSTRUCTION AHEAD" SIGNS WITH STEADY BURN LIGHTS ON I-55 SB EXIT RAMP, AT 500' INTERVALS FROM THE HARLEM AVE. AND I-55 SB EXIT RAMP INTERSECTION.
 - SHIFT TRAFFIC TO OUTSIDE LANES AND EXISTING OUTSIDE SHOULDER, PROVIDING TWO 11' LANES ON THE SB BRIDGE AND TWO 11' LANES ON THE NB BRIDGE UNDER HIGHWAY STANDARD 701601 AND AS SHOWN IN THE PLANS.
 - UPON COMPLETION OF CONSTRUCTION AND REMOVAL OF TRAFFIC CONTROL, PROVIDE PROPOSED PAVEMENT MARKINGS AND RAISED REFLECTIVE PAVEMENT MARKERS TO REVERT TO EXISTING PAVEMENT MARKINGS CONFIGURATION, AS SHOWN ON THE PROPOSED PAVEMENT MARKING PLAN UNDER HIGHWAY STANDARD 701426.

- NOTES:**
- ALL SIGNS SHALL BE MOUNTED WITH STEADY BURN LIGHTS AT ALL TIMES THROUGHOUT THE DURATION OF CONSTRUCTION. THE COST OF THIS WORK AND ALL SIGNS SHALL BE CONSIDERED AS INCLUDED IN THE CONTRACT COST FOR TRAFFIC CONTROL AND PROTECTION (SPECIAL).

FILE NAME =	USER NAME = #USER#	DESIGNED - SEW	REVISED -	STATE OF ILLINOIS DEPARTMENT OF TRANSPORTATION	MAINTENANCE OF TRAFFIC - STAGE II IL-43 (HARLEM AVE.) OVER SANITARY AND SHIP CANAL	F.A.P. RTE.	SECTION	COUNTY	TOTAL SHEETS	SHEET NO.	
#FILE#		DRAWN - SEW	REVISED -			348	(0708.1 & 2323.5)B	COOK	47	08	
		CHECKED - FML	REVISED -			CONTRACT NO. 60D69					
		DATE - 03/2010	REVISED -			ILLINOIS FED. AID PROJECT					