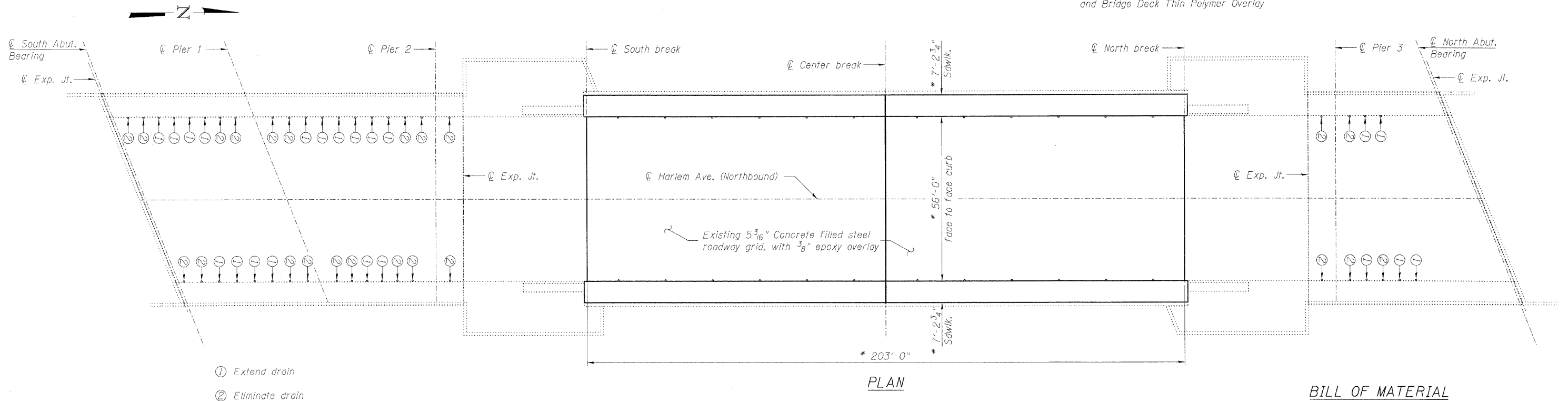


STATE OF ILLINOIS
DEPARTMENT OF TRANSPORTATION

* Limits of Concrete Bridge Deck Scarification
and Bridge Deck Thin Polymer Overlay



Notes:

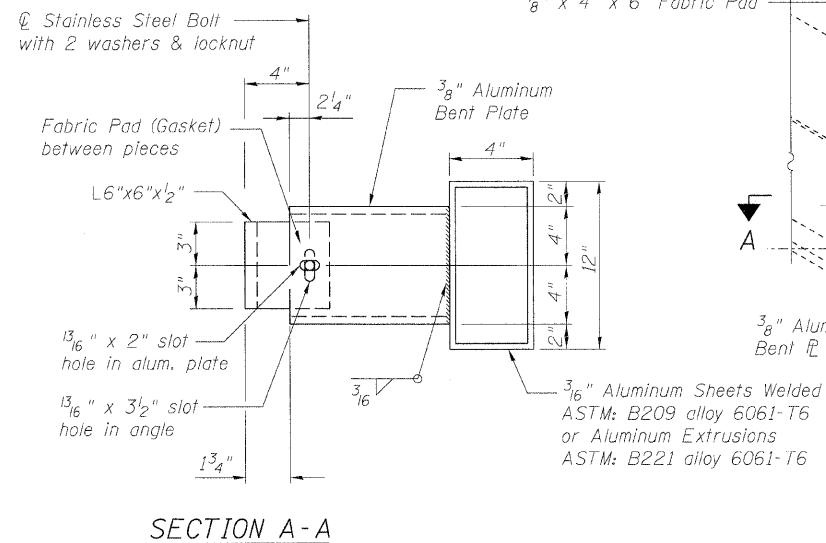
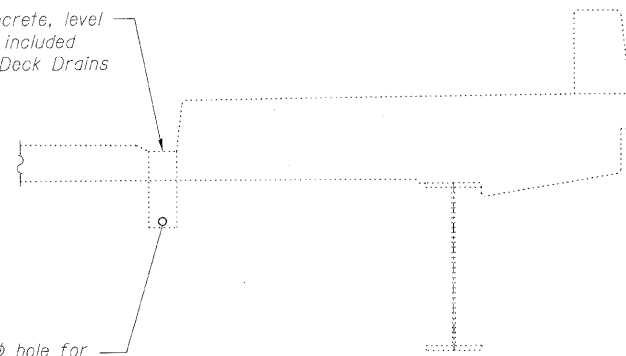
Repair areas of concrete filled grid using Polymer Concrete (as directed by the Engineer).
Bridge deck scarification shall be limited to hand-held blast cleaning methods.
Sidewalks do not require overlay removal and replacement.
Concrete Sealer shall be applied to top of deck surface, top of sidewalks, roadway face of curbs and parapets, and concrete slab above machine houses. Concrete Sealer shall not be applied on areas with Polymer Overlay.

BILL OF MATERIAL

Item	Unit	Total
Bridge Deck Thin Polymer Overlay $\frac{3}{8}$ "	Sq. Yd.	1265
Concrete Bridge Deck Scarification (3/8 inch)	Sq. Yd.	1265
Concrete Sealer	Sq. Ft.	20949
** Polymer Concrete	Cu. Ft.	5.0
Floor Drain Extension	Each	21
Plug Existing Deck Drains	Each	23

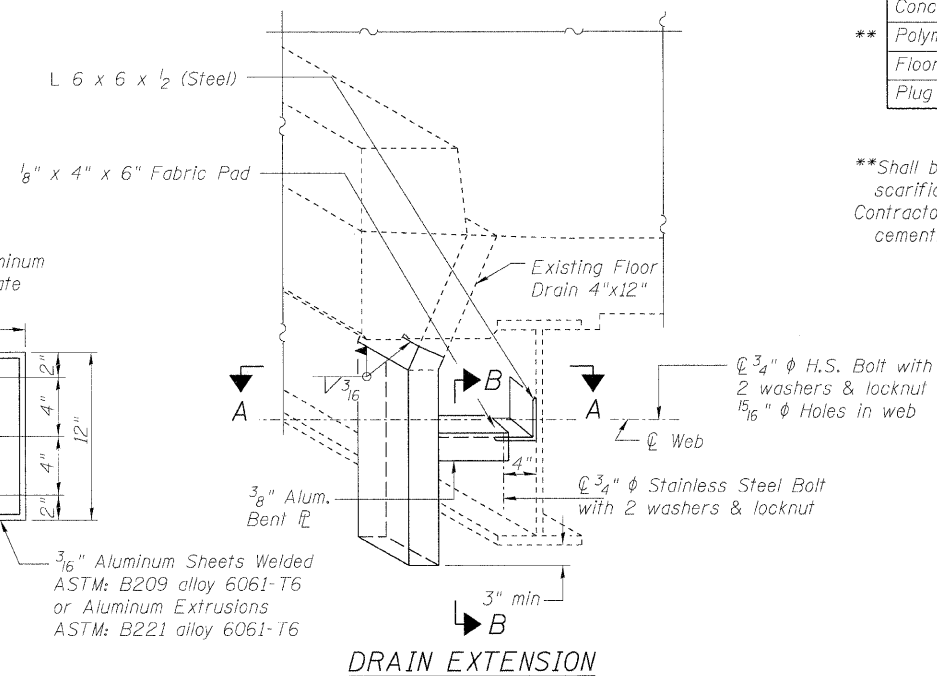
** Shall be used if concrete surfaces are below the top of steel grid after scarification, in order to provide a smooth surface for Polymer Overlay. Contractor may substitute Polymer Concrete with an approved equivalent cementitious patching material for concrete.

Plug drain with concrete, level with roadway. Cost included with Plug Existing Deck Drains

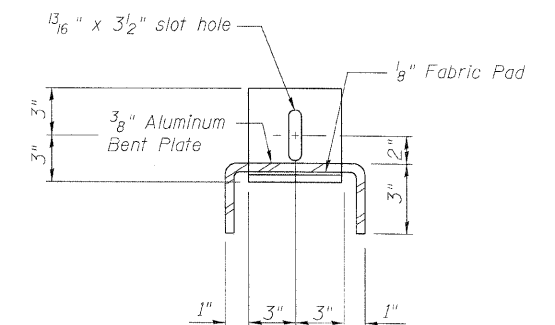


Notes:

1. All plates, angles, nuts, and washers, unless otherwise shown, shall be galvanized according to AASHTO M111 or M232 as applicable.



DRAIN EXTENSION DETAILS



**DECK SLAB DETAILS
STRUCTURE NO. 016-0315**

<p>LIN ENGINEERING, LTD. Consulting Engineers Chatham, Illinois</p>	SHEET NO. 4 17 SHEETS	F.A.P. RTE. 348	SECTION (0708.1&2323.5)B	COUNTY COOK	TOTAL SHEETS 47	SHEET NO. 15
		CONTRACT NO. 60D69				ILLINOIS FED. AID PROJECT