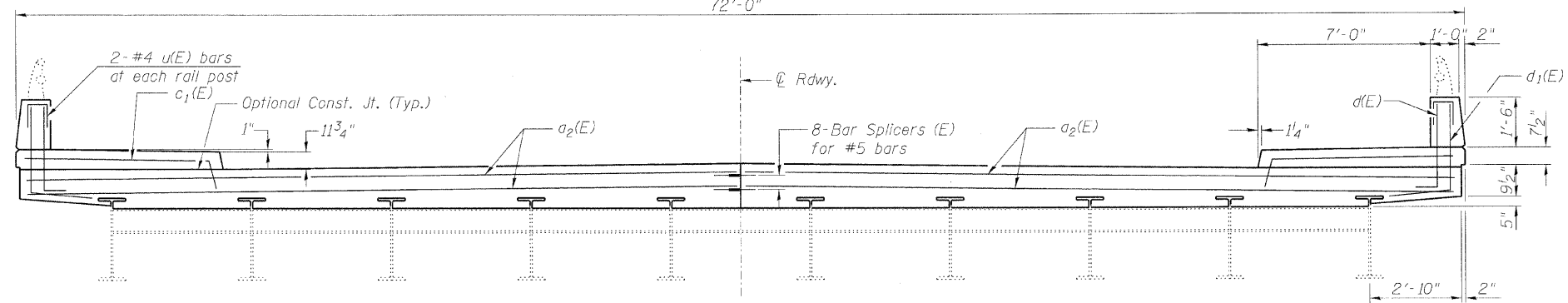
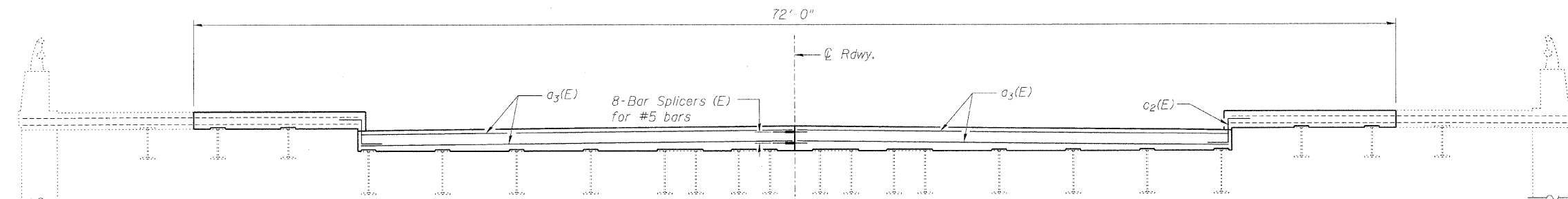


STATE OF ILLINOIS
DEPARTMENT OF TRANSPORTATION

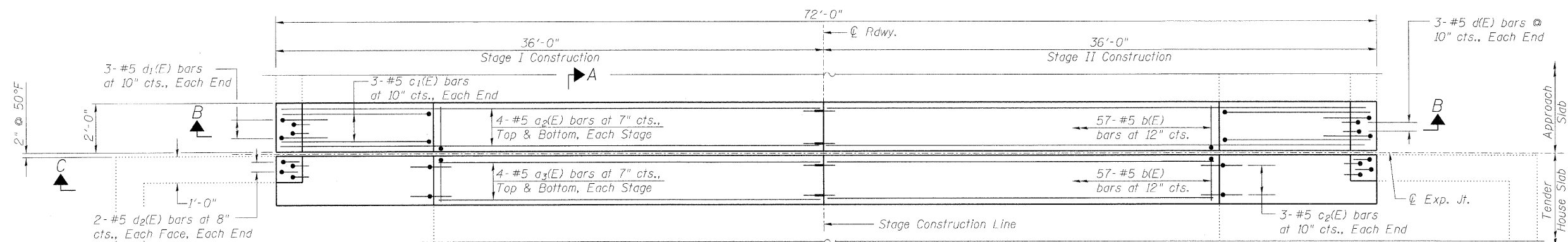
72'-0"



SECTION B-B



SECTION C-C

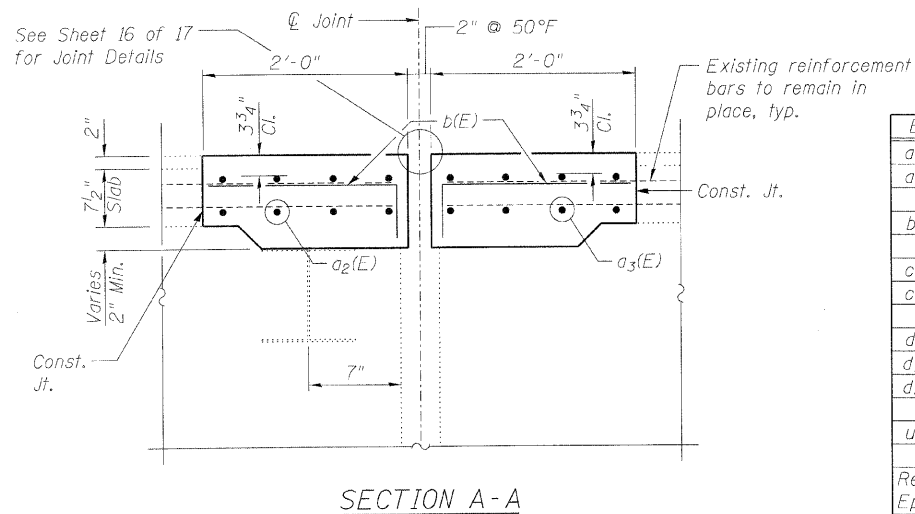


PLAN

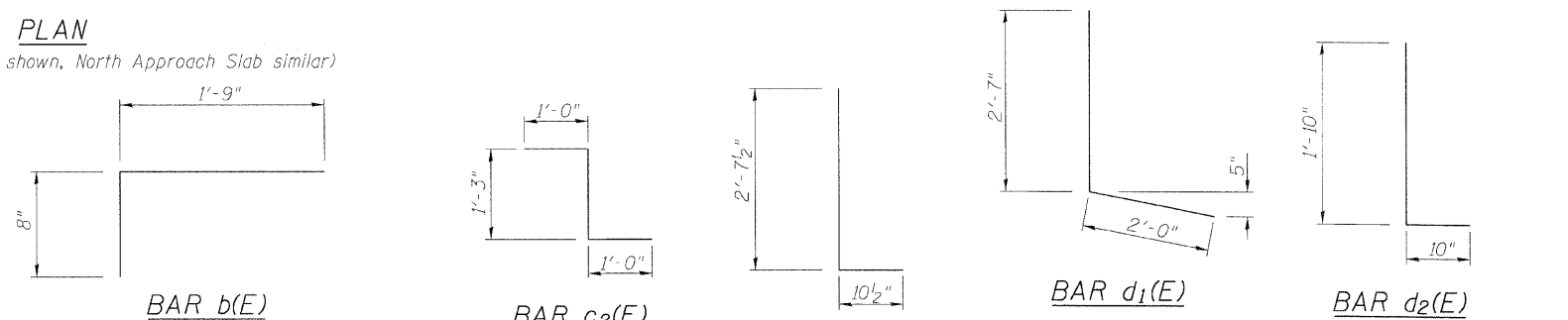
(South Approach Slab shown, North Approach Slab similar)

BILL OF MATERIAL

Bar	No.	Size	Length	Shape
a2(E)	32	#5	35'-7"	—
a3(E)	32	#5	27'-9"	—
b(E)	228	#5	2'-5"	┌
c1(E)	12	#5	8'-10"	—
c2(E)	12	#5	3'-3"	└
d(E)	12	#5	3'-6"	┌
d1(E)	12	#5	4'-7"	┌
d2(E)	16	#5	2'-8"	┌
u(E)	8	#4	2'-6"	U
Reinforcement Bars, Epoxy Coated		Pound	3000	
Concrete Superstructure		Cu. Yd.	30.5	



SECTION A-A



EXPANSION JOINT CONCRETE DETAILS
AT TENDER HOUSES
STRUCTURE NO. 016-0315

<p>LIN ENGINEERING, LTD. Consulting Engineers Chatham, Illinois</p>	SHEET NO. 8	F.A.P. RTE. 348	SECTION (0708.1&2323.5)B	COUNTY COOK	TOTAL SHEETS 47	SHEET NO. 19
	17 SHEETS	CONTRACT NO. 60D69		ILLINOIS FED. AID PROJECT		