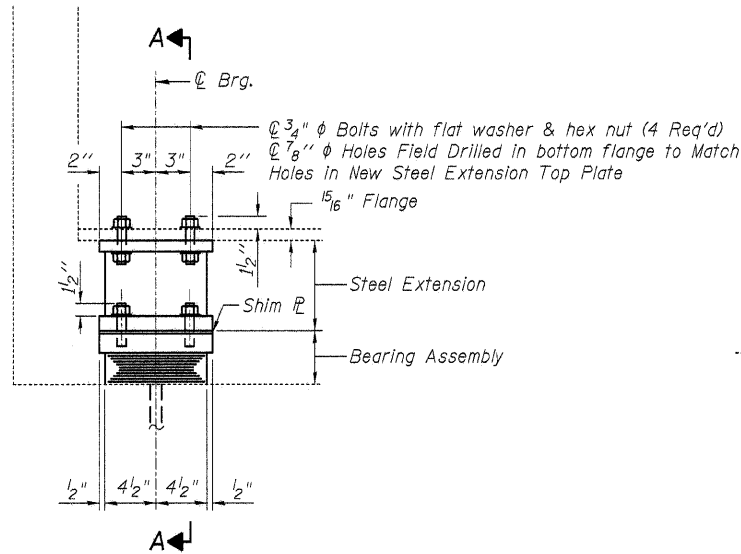
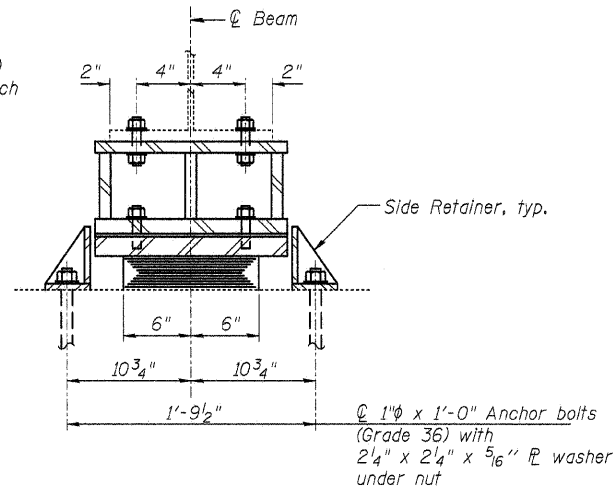


STATE OF ILLINOIS
DEPARTMENT OF TRANSPORTATION

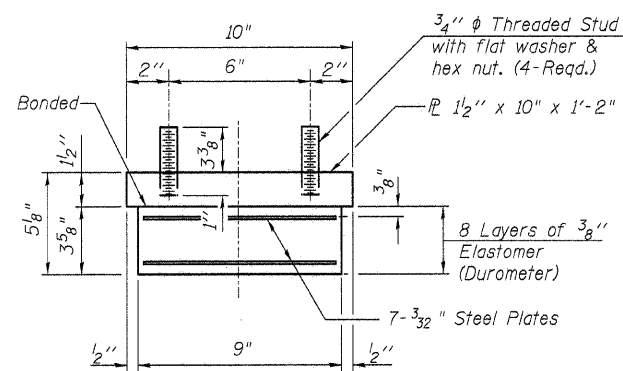


ELEVATION AT ABUT.



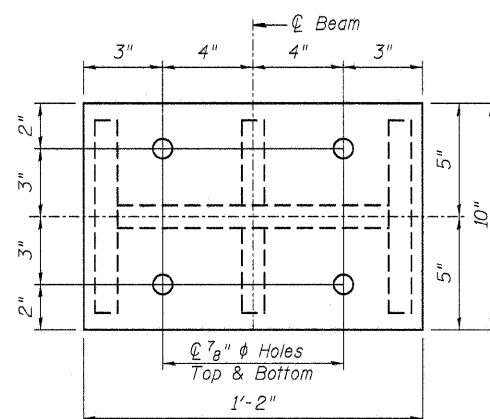
SECTION A-A

TYPE I ELASTOMERIC EXP. BRG.
(Beams 1, 2, 9 and 10 at South Abutment)



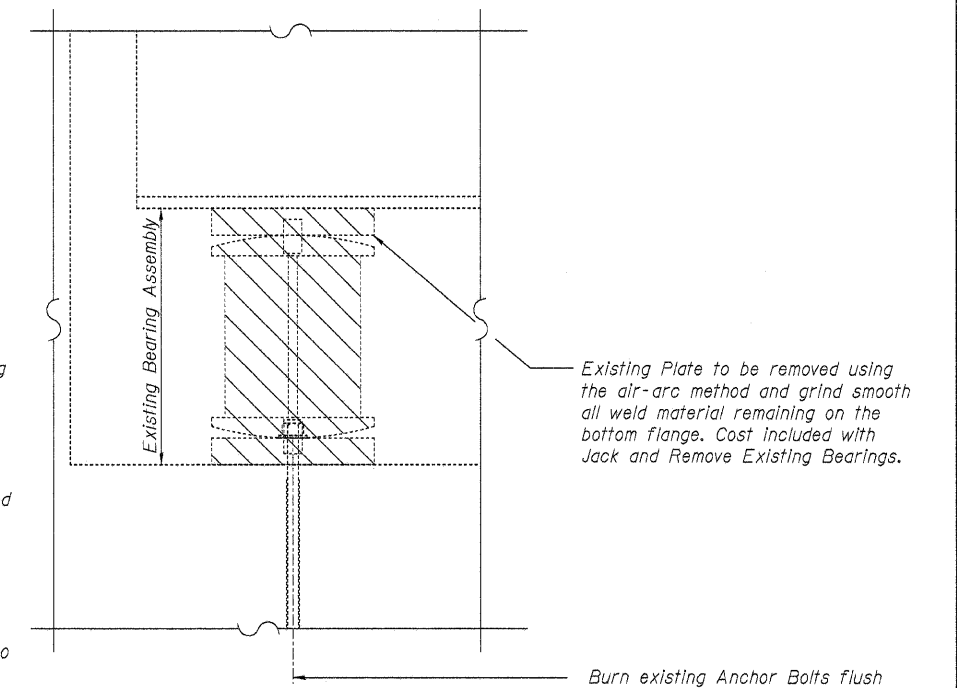
BEARING ASSEMBLY

Note:
Shim plates shall not be placed under Bearing Assembly.



PLAN STEEL EXTENSION

Notes:
Hatch area indicates Bearing removal. See Special Provision for Jack and Remove Existing Bearings.
Anchor bolts shall be ASTM F1554 all-thread (or an Engineer-approved alternate material) of the grade(s) and diameter(s) specified. ASTM A307 Grade C anchor bolts may be used in lieu of ASTM F1554 Grade 36 (Fy=36ksi). The corresponding specified grade of AASHTO M314 anchor bolts may be used in lieu of ASTM F1554.
Drilled and set anchor bolts shall be installed according to Article 521.06 of the Standard Specifications.
Side retainers and other steel members required for the bearing assembly shall be included in the cost of Elastomeric Bearing Assembly, Type I.
Two 1/8 inch adjusting shims shall be provided for each bearing in addition to all other plates or shims and placed as shown on bearing details.
Steel Extensions shall be included in the cost of Furnishing and Erecting Structural Steel.
Fasteners shall be AASHTO M164 Type I, mechanically galvanized bolts.
The Contractor is to verify the existing dimensions prior to fabricating the steel extensions. It is intended to keep the existing beams at their current elevation.



EXISTING BEARING REMOVAL DETAIL

Burn existing Anchor Bolts flush with existing concrete surface. Grind existing anchor bolt smooth and seal with epoxy. Cost included with Jack and Remove Existing Bearings.

SHIM P TABLE

| BEAM | Thickness |
|------|-----------|
| 2 | 5/8" |
| 9 | 1/4" |

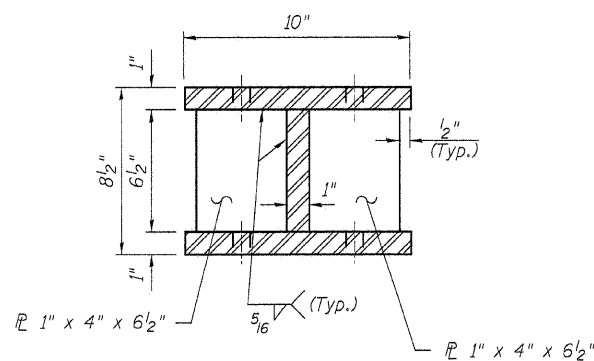
BEAM REACTION TABLE

(From Existing Plans)

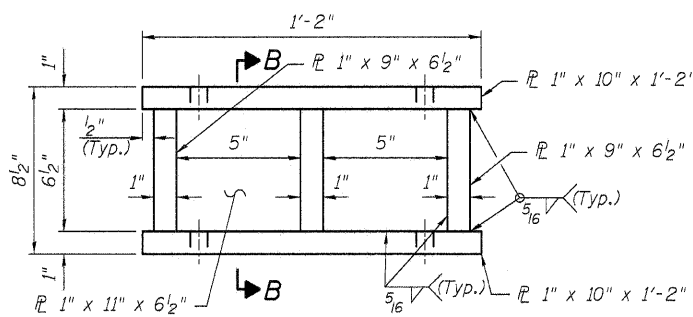
| | S. Abut. |
|---------------------------|----------|
| Dead Load (K) | 35.3 |
| Live Load (K) | 38.6 |
| Impact (K) | 10.8 |
| Total (K) | 84.7 |
| Min. Jack Capacity (Tons) | 45 |

BILL OF MATERIAL

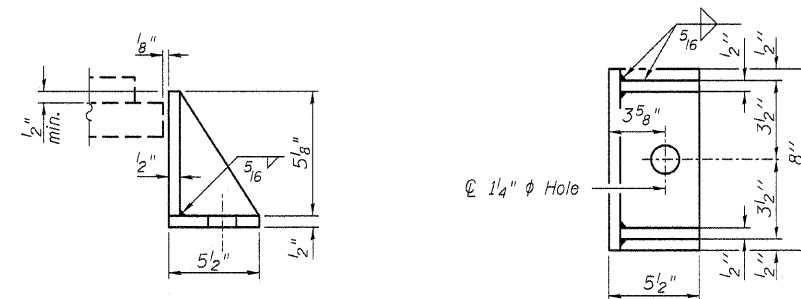
| Item | Unit | Total |
|--|-------|-------|
| Elastomeric Bearing Assembly, Type I | Each | 4 |
| Anchor Bolts, 1" | Each | 8 |
| Jack and Remove Existing Bearings | Each | 4 |
| Furnishing and Erecting Structural Steel | Pound | 620 |



SECTION B-B



ELEVATION STEEL EXTENSION



SIDE RETAINER

Equivalent rolled angle with stiffeners will be allowed in lieu of welded plates.

SOUTH ABUTMENT BEARING DETAILS
STRUCTURE NO. 016-0315

| | | | | | | |
|---|------------------------------|-------------|------------------|--------|--------------------|-----------|
| LIN ENGINEERING, LTD. Consulting Engineers Chatham, Illinois <small>Designed By TBP Checked By MTH Date: March 2012</small> | SHEET NO. 9 17 SHEETS | F.A.P. RTE. | SECTION | COUNTY | TOTAL SHEETS | SHEET NO. |
| | | 348 | (0708.1&2323.5)B | COOK | 47 | 20 |
| | | | | | CONTRACT NO. 60D69 | |
| ILLINOIS FED. AID PROJECT | | | | | | |