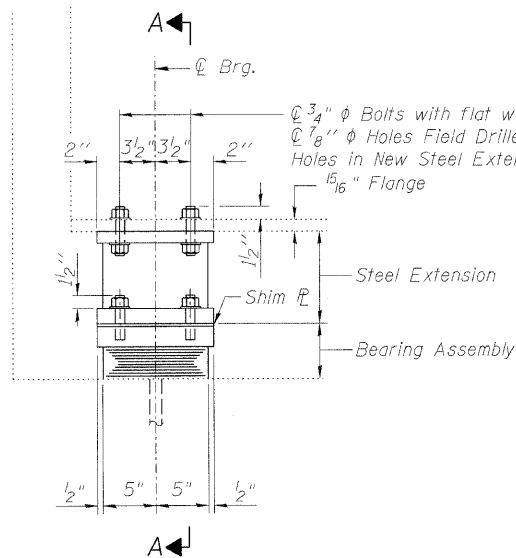
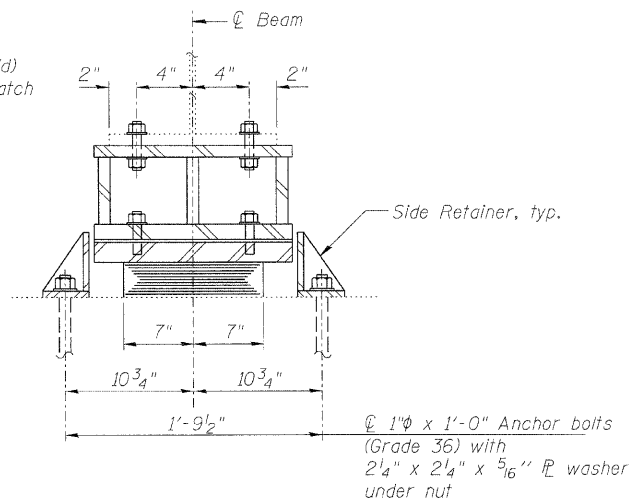


STATE OF ILLINOIS  
DEPARTMENT OF TRANSPORTATION

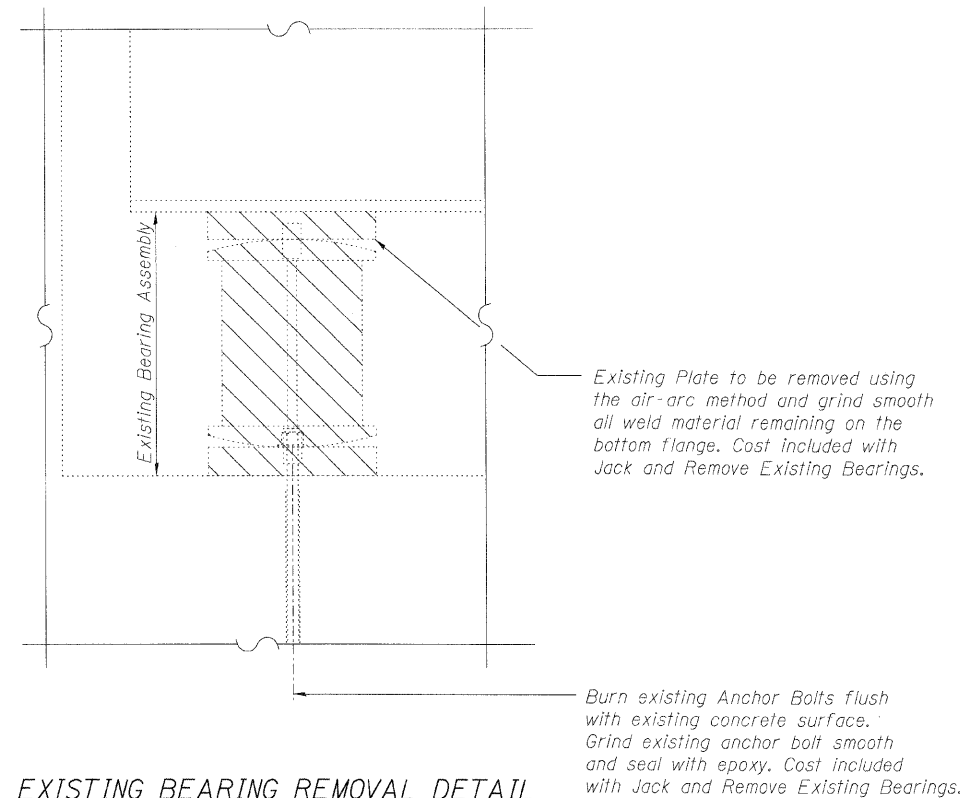


ELEVATION AT ABUT.



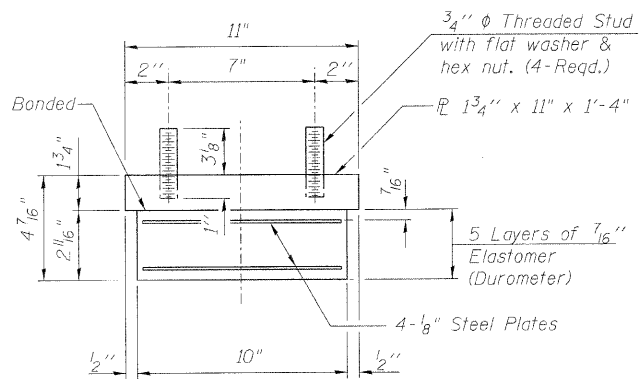
SECTION A-A

Notes:  
Hatch area indicates Bearing removal. See Special Provision for Jack and Remove Existing Bearings.  
Anchor bolts shall be ASTM F1554 all-thread (or an Engineer-approved alternate material) of the grade(s) and diameter(s) specified, ASTM A307 Grade C anchor bolts may be used in lieu of ASTM F1554 Grade 36 (Fy=36ksi). The corresponding specified grade of AASHTO M314 anchor bolts may be used in lieu of ASTM F1554.  
Drilled and set anchor bolts shall be installed according to Article 521.06 of the Standard Specifications.  
Side retainers and other steel members required for the bearing assembly shall be included in the cost of Elastomeric Bearing Assembly, Type I.  
Two 1/8 in. adjusting shims shall be provided for each bearing in addition to all other plates or shims and placed as shown on bearing details.  
Steel Extensions shall be included in the cost of Furnishing and Erecting Structural Steel.  
Fasteners shall be AASHTO M164 Type 1, mechanically galvanized bolts.  
The Contractor is to verify the existing dimensions prior to fabricating the steel extensions. It is intended to keep the existing beams at their current elevation.



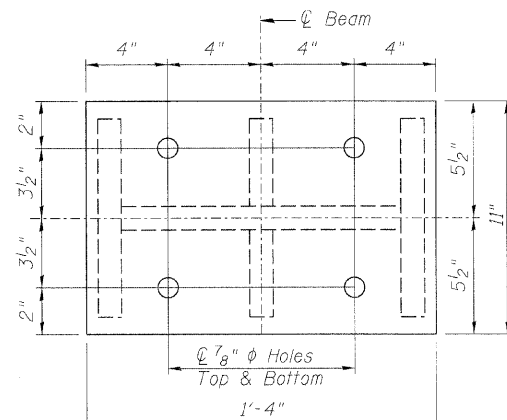
EXISTING BEARING REMOVAL DETAIL

TYPE I ELASTOMERIC EXP. BRG.  
(Beams 1, 2, 9 and 10 at North Abutment)



BEARING ASSEMBLY

Note:  
Shim plates shall not be placed under Bearing Assembly.



PLAN STEEL EXTENSION

SHIM TABLE

BEAM	Thickness
1	1/2"
2	3/8"
9	1/8"

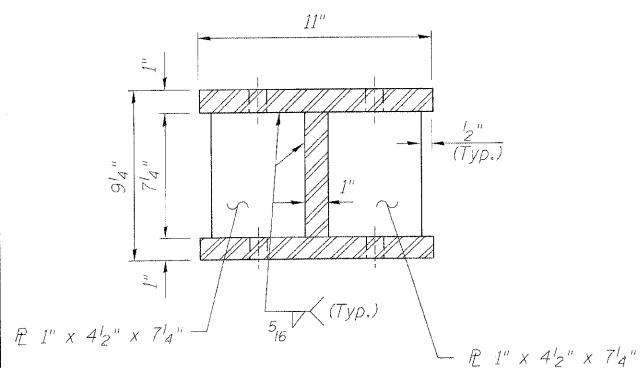
BEAM REACTION TABLE

(From Existing Plans)

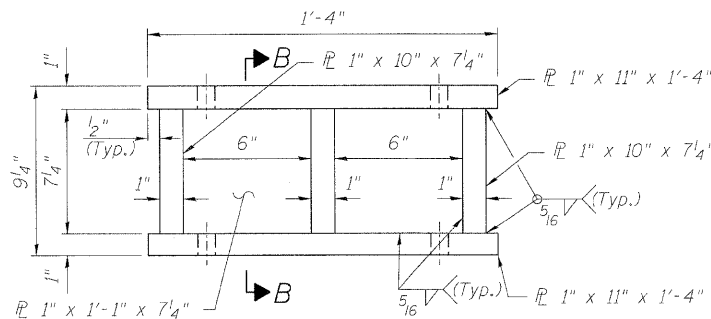
	N. Abut.
Dead Load (K)	34.4
Live Load (K)	62.3
Impact (K)	17.4
Total (K)	114.1
Min. Jack Capacity (Tons)	56

BILL OF MATERIAL

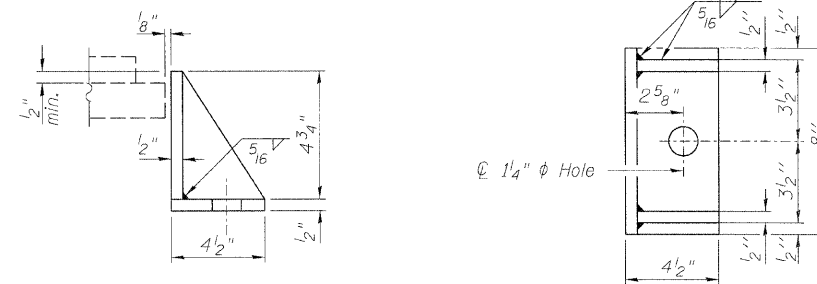
Item	Unit	Total
Elastomeric Bearing Assembly, Type I	Each	4
Anchor Bolts, 1"	Each	8
Jack and Remove Existing Bearings	Each	4
Furnishing and Erecting Structural Steel	Pound	780



SECTION B-B



ELEVATION STEEL EXTENSION



SIDE RETAINER

Equivalent rolled angle with stiffeners will be allowed in lieu of welded plates.

NORTH ABUTMENT BEARING DETAILS  
STRUCTURE NO. 016-0315

<b>LIN ENGINEERING, LTD.</b> Consulting Engineers Channah, Illinois	SHEET NO. 10  17 SHEETS	F.A.P. RTE.	SECTION	COUNTY	TOTAL SHEETS	SHEET NO.
		348	(0708.1&2323.5)B	COOK	47	21
				CONTRACT NO. 60D69		
		ILLINOIS FED. AID PROJECT				

Designed By: TBP  
Date: March, 2010  
Checked By: MTH  
File: 016-0315.dgn  
Drawn By: TBP