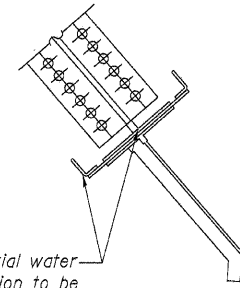
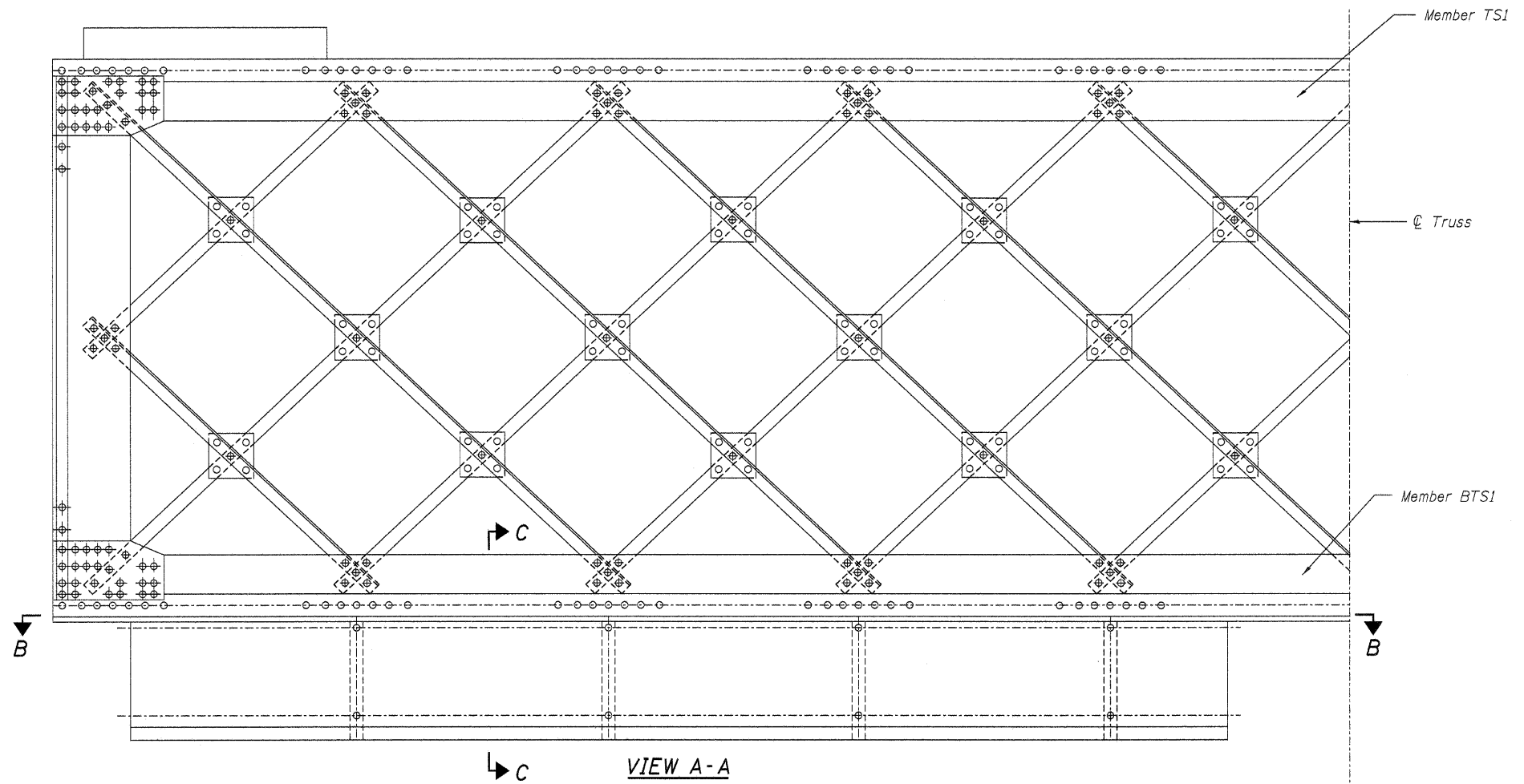
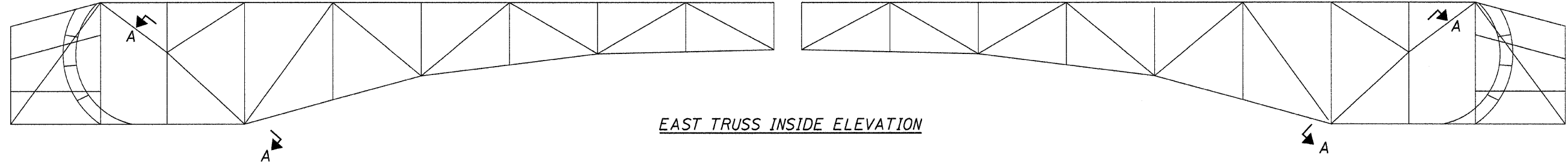
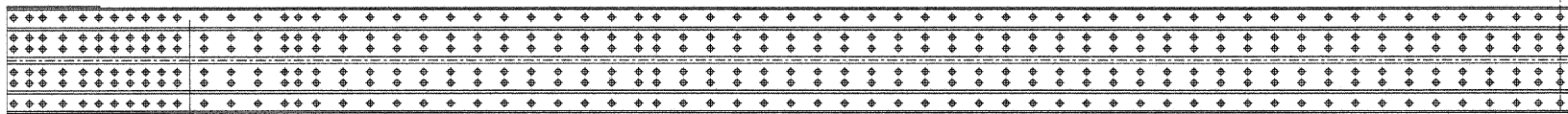


STATE OF ILLINOIS  
DEPARTMENT OF TRANSPORTATION



Locate 1/2"  $\phi$  holes at areas of potential water collection, each side of web. Location to be designated in field by Engineer.

Notes:  
Cost of drilling holes is included with Bridge Washing, see special provision.  
All field drilled holes shall be coated with an approved zinc rich paint. Cost included in Bridge Washing, see special provision.



Drill 1/2"  $\phi$  holes at  $\pm 4'-0"$  spacing along member BTS1 to allow drainage. Do not place drilled hole in same line as existing bolts. Hole locations shall split existing bolt spacing.

Symmetrical about C

**MISCELLANEOUS REPAIR DETAILS-1**  
**STRUCTURE NO. 016-0315**

<p>LIN ENGINEERING, LTD. Consulting Engineers Chatham, Illinois</p>	SHEET NO. 11	F.A.P. RTE.	SECTION	COUNTY	TOTAL SHEETS	SHEET NO.	
	17 SHEETS	348	(0708.1&2323.5)B	COOK	47	22	
		CONTRACT NO. 60D69					
		ILLINOIS FED. AID PROJECT					

Designed By: TBP  
Date: March 2002  
Checked By: MTH  
File: 016-0315.dgn  
Drawn By: TBP