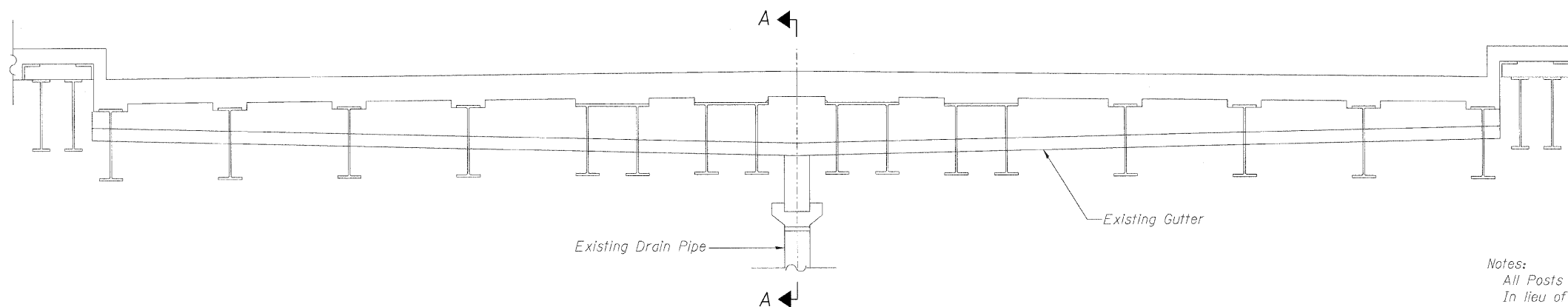
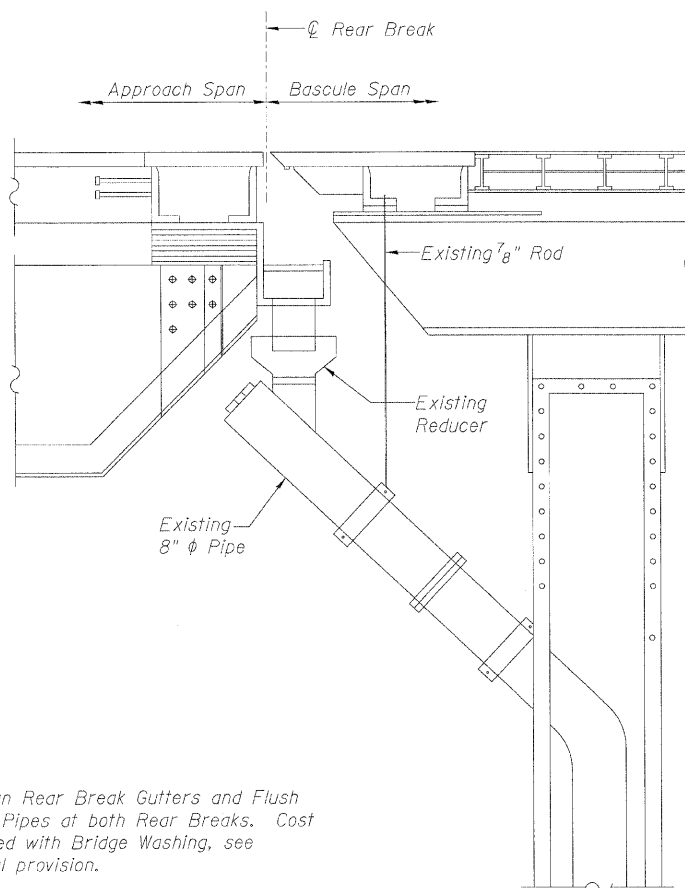


STATE OF ILLINOIS
DEPARTMENT OF TRANSPORTATION



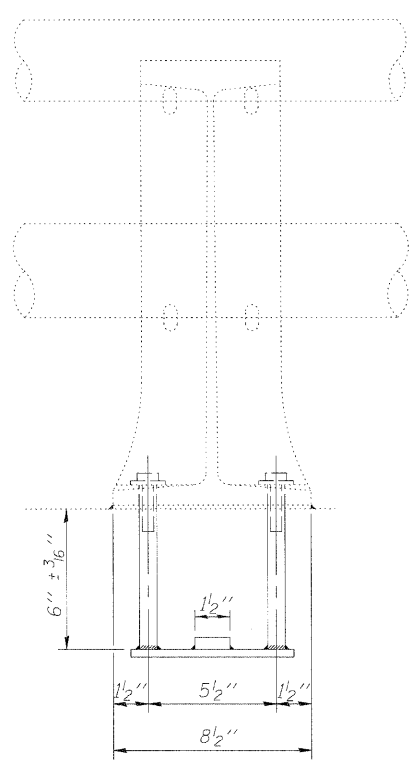
REAR BREAK GUTTER DETAIL

Notes:
All Posts shall be normal to parapet.
In lieu of the cast-in-place anchor device shown, the Contractor has the option of drilling and setting stainless steel anchor rods of the same diameter and grade as the specified cap screws according to Article 509.06 of the Standard Specifications. Embedment shall be according to the manufacturer's specifications.
Removal and re-erection of the existing aluminum handrail, rail post, and all new applicable hardware, including labor and installation shall be included in the cost of Concrete Removal.

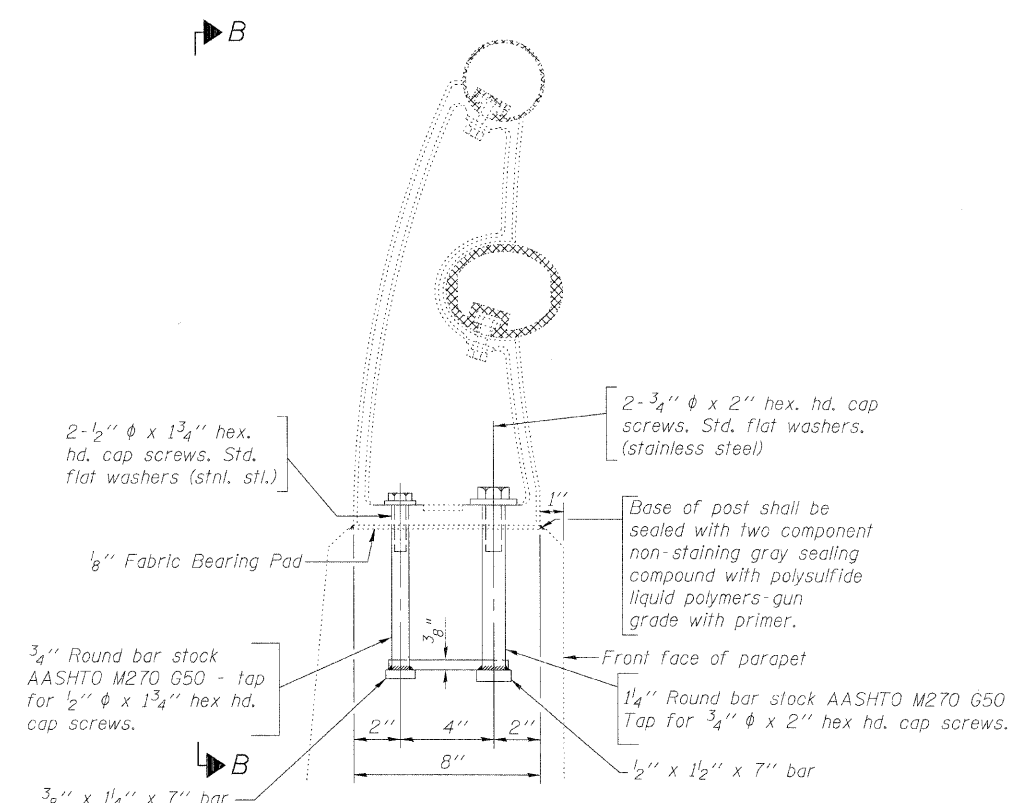


Note:
Clean Rear Break Gutters and Flush Drain Pipes at both Rear Breaks. Cost included with Bridge Washing, see special provision.

SECTION A-A



VIEW B-B



RAIL POST DETAILS

SECTION A-A

MISCELLANEOUS REPAIR DETAILS-2
STRUCTURE NO. 016-0315

| | | | | | | |
|---|--------------|-------------|------------------|--------------------|--------------|-----------|
| <p>LIN ENGINEERING, LTD. Consulting Engineers Chatham, Illinois</p> | SHEET NO. 12 | F.A.P. RTE. | SECTION | COUNTY | TOTAL SHEETS | SHEET NO. |
| | 17 SHEETS | 348 | (0708.1&2323.5)B | COOK | 47 | 23 |
| | | | | CONTRACT NO. 60D69 | | |
| ILLINOIS FED. AID PROJECT | | | | | | |

Designed By: TBP
Checked By: MTH
Date: March 2010

Drawn By: TBP
File: 016-0315.dgn