

STATE OF ILLINOIS  
DEPARTMENT OF TRANSPORTATION

**GENERAL NOTES**

Reinforcement bars shall conform to the requirements of ASTM A 706 Gr 60. See Special Provisions.

Reinforcement bars designated (E) shall be epoxy coated.

Prior to pouring the new concrete deck, all heavy or loose rust, loose mill scale, and other loose or potentially detrimental foreign material shall be removed from the surfaces in contact with concrete. Tightly adhered paint may remain unless otherwise noted. Removal shall be accomplished by methods that will not damage the steel and the cost will be included in the pay item covering removal of the existing concrete.

Plan dimensions and details relative to existing plans are subject to nominal construction variations. The Contractor shall field verify existing dimensions and details affecting new construction and make necessary approved adjustments prior to construction or ordering of materials. Such variations shall not be cause for additional compensation for a change in scope of the work, however, the Contractor will be paid for the quantity actually furnished at the unit price bid for the work.

The existing structural steel coating contains lead. The Contractor shall take appropriate precautions to deal with the presence of lead on this project.

All new structural steel shall be shop painted with the inorganic zinc rich primer per AASHTO M300, Type I. Cost included with Furnishing & Erecting Structural Steel.

All structural steel shall conform to AASHTO Classification M-270 Gr. 36, unless otherwise noted.

Joint openings shall be adjusted according to Article 520.04 of the Standard Specs. when the deck is poured at an ambient temperature other than 50°F.

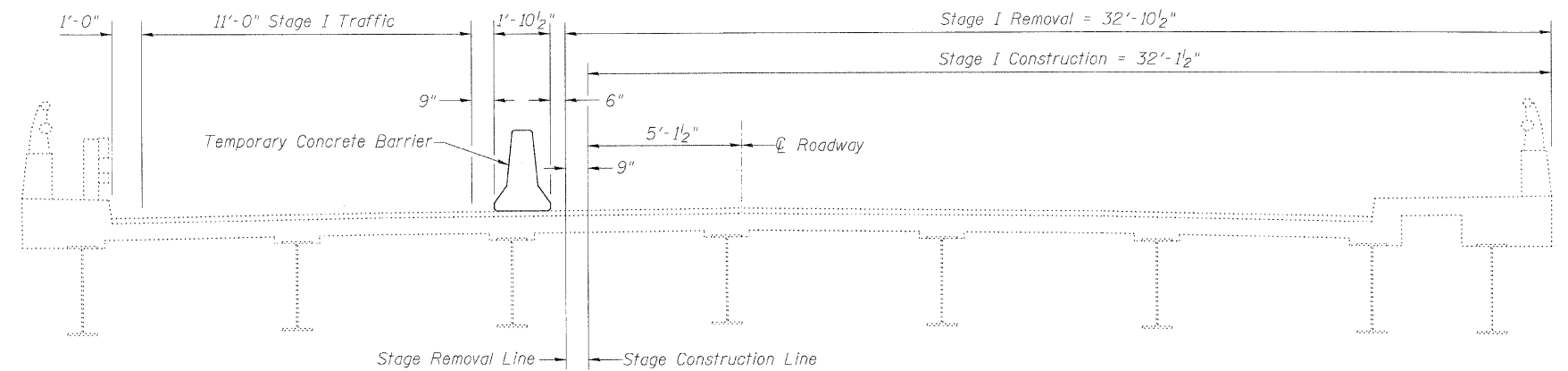
Cost of removal and re-installation of all members necessary to complete the work as detailed on the plans and as specified in the Special Provisions shall be included with Furnishing and Erecting Structural Steel.

The deck surface shall have its final finish tined according to Article 420.09(e)(1) of the Standard Specifications. Cost included with Concrete Superstructure.

If the analysis submitted to the Contractor for the jacking/temporary support system to be used shows temporary stiffeners are required to prevent web crippling or buckling, the stiffeners shall be steel and bolted to the web. If stiffeners are not required, hardwood timbers shall be installed tightly between the top and bottom flange to prevent flange rotation.

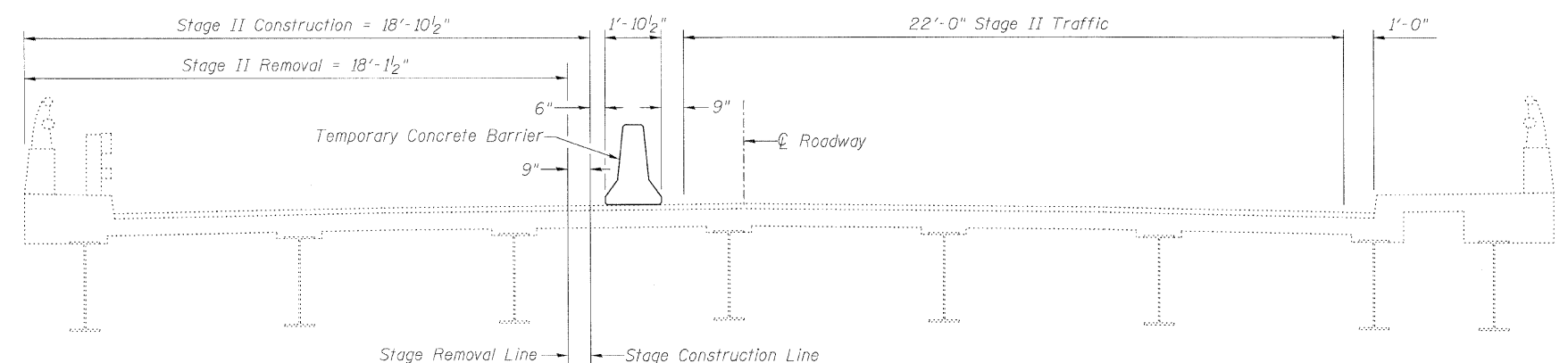
**TOTAL BILL OF MATERIAL**

ITEM	UNIT	SUPER	SUB	TOTAL
Concrete Removal	Cu. Yd.	23.6	-	23.6
Protective Shield	Sq. Yd.	331	-	331
Concrete Superstructure	Cu. Yd.	23.7	-	23.7
Furnishing and Erecting Structural Steel	Pound	-	3330	3330
Jack and Remove Existing Bearings	Each	-	16	16
Reinforcement Bars, Epoxy Coated	Pound	3510	-	3510
Bar Splicers	Each	44	-	44
Preformed Joint Strip Seal	Foot	160	-	160
Elastomeric Bearing Assembly, Type I	Each	-	16	16
Anchor Bolts, 3/4"	Each	-	2	2
Anchor Bolts, 1"	Each	-	32	32
Concrete Sealer	Sq. Ft.	17296	-	17296
Bridge Washing 2	Each	1	-	1
Deck Slab Repair (Full Depth, Type I)	Sq. Yd.	0.7	-	0.7
Deck Slab Repair (Full Depth, Type II)	Sq. Yd.	21.1	-	21.1
Deck Slab Repair (Partial)	Sq. Yd.	14.5	-	14.5
Concrete Bridge Deck Scarification (3/8 inch)	Sq. Yd.	1310	-	1310
Polymer Concrete	Cu. Ft.	5.0	-	5.0
Bridge Deck Thin Polymer Overlay 3/8"	Sq. Yd.	1310	-	1310
Structural Repair of Concrete (Depth Greater Than 5 in.)	Sq. Ft.	-	90	90
Structural Repair of Concrete (Depth Equal To or Less Than 5 in.)	Sq. Ft.	-	154	154
Center Lock Adjustment	Each	2	-	2
Temporary Shoring and Cribbing	Each	-	1	1



**STAGE I REMOVAL & CONSTRUCTION**

(Looking South)



**STAGE II REMOVAL & CONSTRUCTION**

(Looking South)

**GENERAL NOTES & DETAILS**

**STRUCTURE NO. 016-0991**

	SHEET NO. 2	F.A.P. RTE.	SECTION	COUNTY	TOTAL SHEETS	SHEET NO.
		348	(0708.1&2323.5)B	COOK	47	30
14 SHEETS	CONTRACT NO. 60D69				ILLINOIS FED. AID PROJECT	
<small>Designed By: ADB Date: March, 2010</small>	<small>Checked By: MTH File: 016-0991.dgn</small>	<small>Drawn By: AJF</small>				