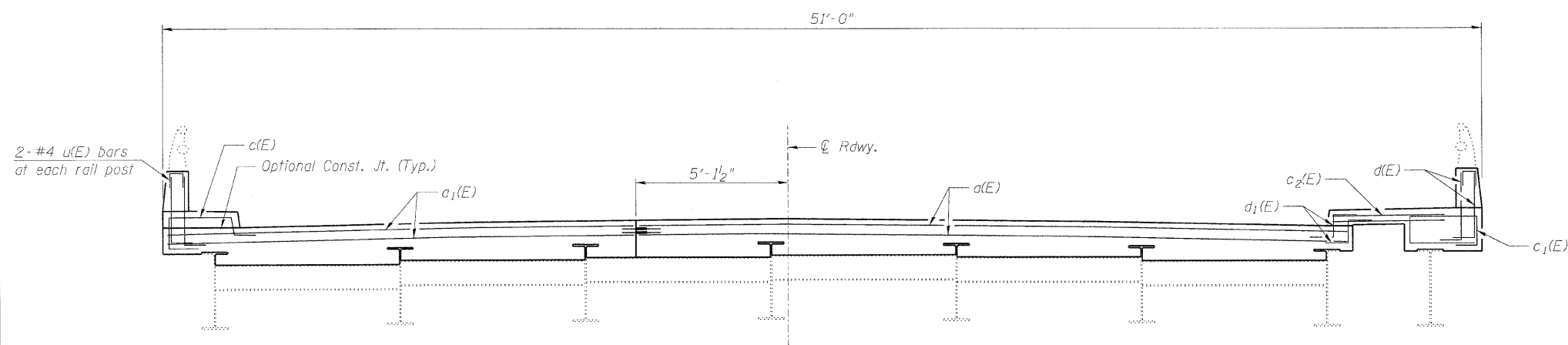
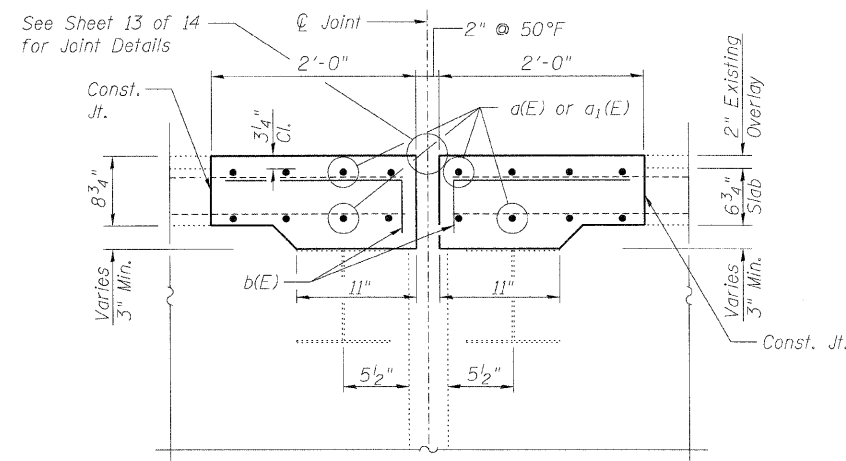


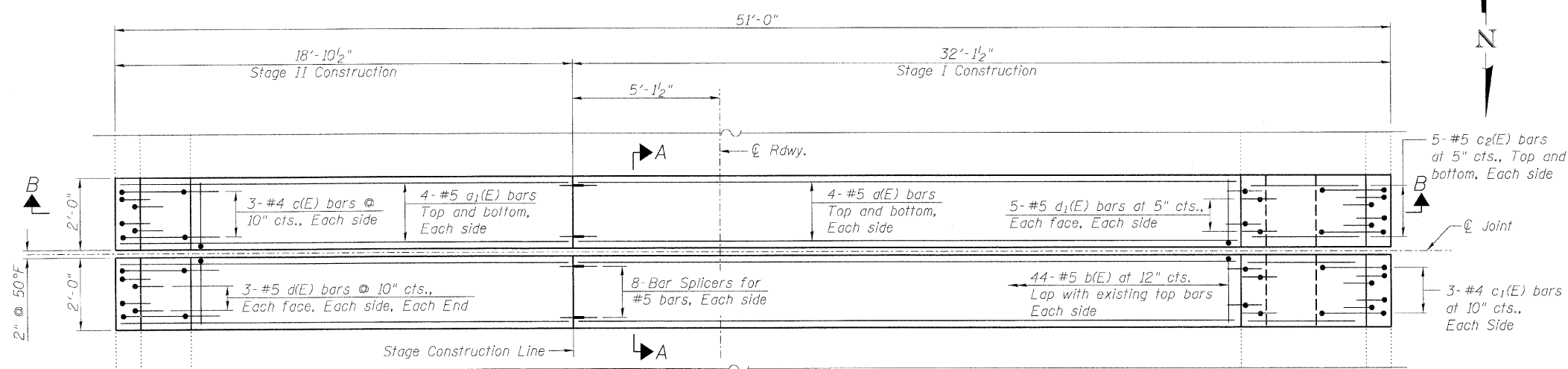
STATE OF ILLINOIS
DEPARTMENT OF TRANSPORTATION



SECTION B-B



SECTION A-A

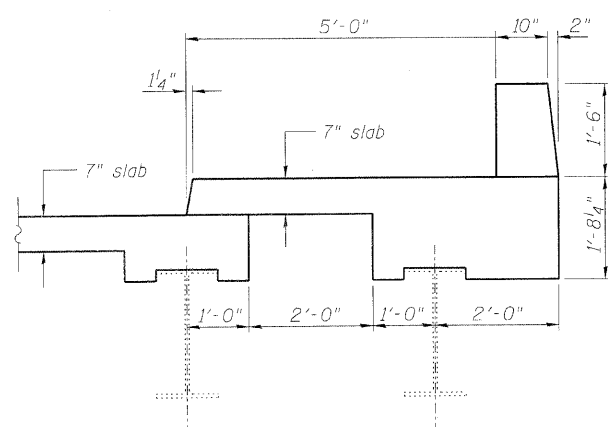


PLAN

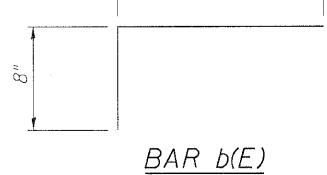
(Pier A shown, Pier 1 similar)

BILL OF MATERIAL

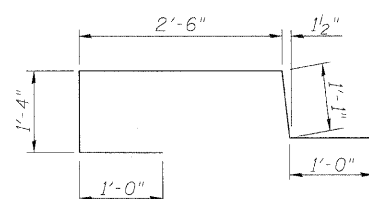
Bar	No.	Size	Length	Shape
a(E)	32	#5	26'-10"	—
a ₁ (E)	32	#5	18'-7"	—
b(E)	176	#5	2'-5"	└
c(E)	12	#4	6'-11"	└
c ₁ (E)	12	#4	8'-6"	└
c ₂ (E)	40	#5	4'-3"	—
d(E)	48	#5	3'-3"	L
d ₁ (E)	40	#5	3'-7"	L
u(E)	16	#4	2'-6"	U
Reinforcement Bars, Epoxy Coated			Pound	2600
Concrete Superstructure			Cu. Yd.	16.9



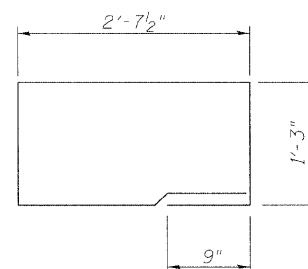
SECTION THRU WEST SIDEWALK



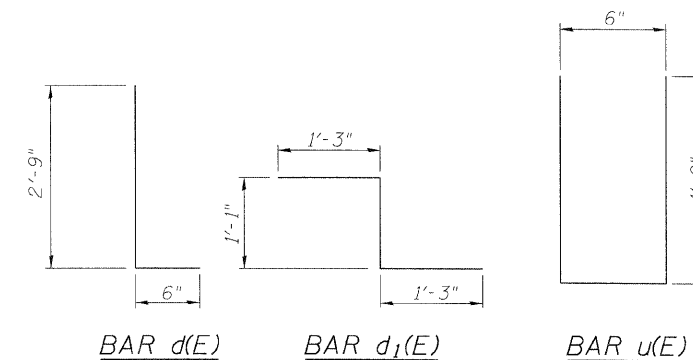
BAR b(E)



BAR c(E)



BAR c₁(E)



BAR d(E)

BAR d₁(E)

BAR u(E)

EXPANSION JOINT CONCRETE
DETAILS AT PIERS
STRUCTURE NO. 016-0991

<p>LIN ENGINEERING, LTD. Consulting Engineers Chatham, Illinois</p>	SHEET NO. 7	F.A.P. RTE. 348	SECTION (0708.1&2323.5)B	COUNTY COOK	TOTAL SHEETS 47	SHEET NO. 35
	14 SHEETS	CONTRACT NO. 60D69		ILLINOIS FED. AID PROJECT		