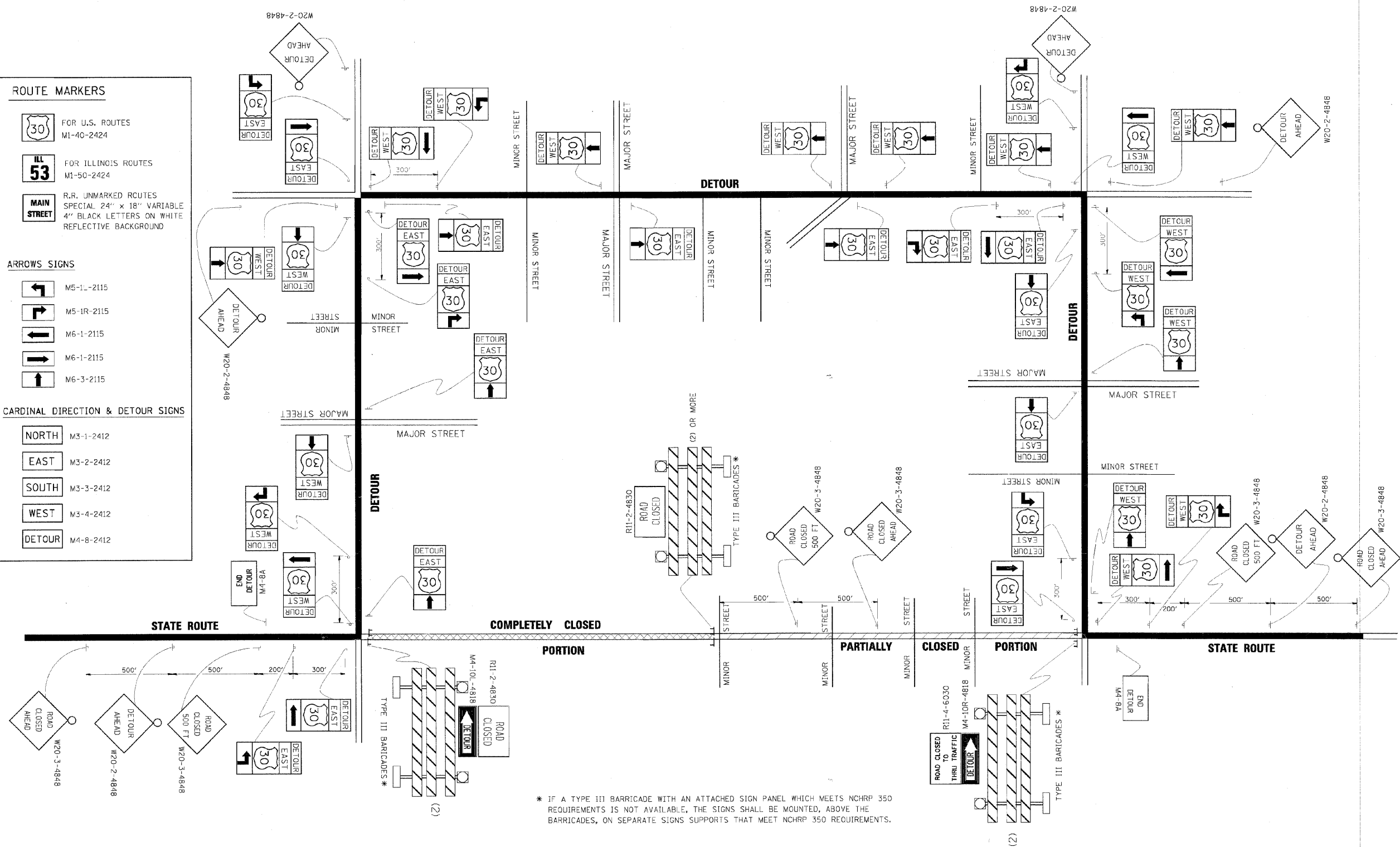


ROUTE MARKERS	
	FOR U.S. ROUTES M1-40-2424
	FOR ILLINOIS ROUTES M1-50-2424
	R.R. UNMARKED ROUTES SPECIAL 24" x 18" VARIABLE 4" BLACK LETTERS ON WHITE REFLECTIVE BACKGROUND

ARROWS SIGNS	
	M5-1L-2115
	M5-1R-2115
	M6-1-2115
	M6-1-2115
	M6-3-2115

CARDINAL DIRECTION & DETOUR SIGNS	
	M3-1-2412
	M3-2-2412
	M3-3-2412
	M3-4-2412
	M4-8-2412



* IF A TYPE III BARRICADE WITH AN ATTACHED SIGN PANEL WHICH MEETS NCHRP 350 REQUIREMENTS IS NOT AVAILABLE, THE SIGNS SHALL BE MOUNTED, ABOVE THE BARRICADES, ON SEPARATE SIGNS SUPPORTS THAT MEET NCHRP 350 REQUIREMENTS.

DETOUR SIGNING FOR CLOSING STATE HIGHWAYS

FILE NAME = #FILE#	USER NAME = #USER#	DESIGNED -	REVISED -	STATE OF ILLINOIS DEPARTMENT OF TRANSPORTATION	DISTRICT STANDARDS IL-43 (HARLEM AVE.) OVER SANITARY AND SHIP CANAL				F.A.P. RTE. 348	SECTION (0708.1 & 2323.5)B	COUNTY COOK	TOTAL SHEETS 47	SHEET NO. 46	
PLOT SCALE = #SCALE#	CHECKED -	REVISED -	REVISED -		SCALE: NONE SHEET NO. OF SHEETS STA. TO STA.				TC-21					
PLOT DATE = #DATE#	DATE -	REVISED -	REVISED -		CONTRACT NO. 60D69									
										FED. ROAD DIST. NO. ILLINOIS FED. AID PROJECT				