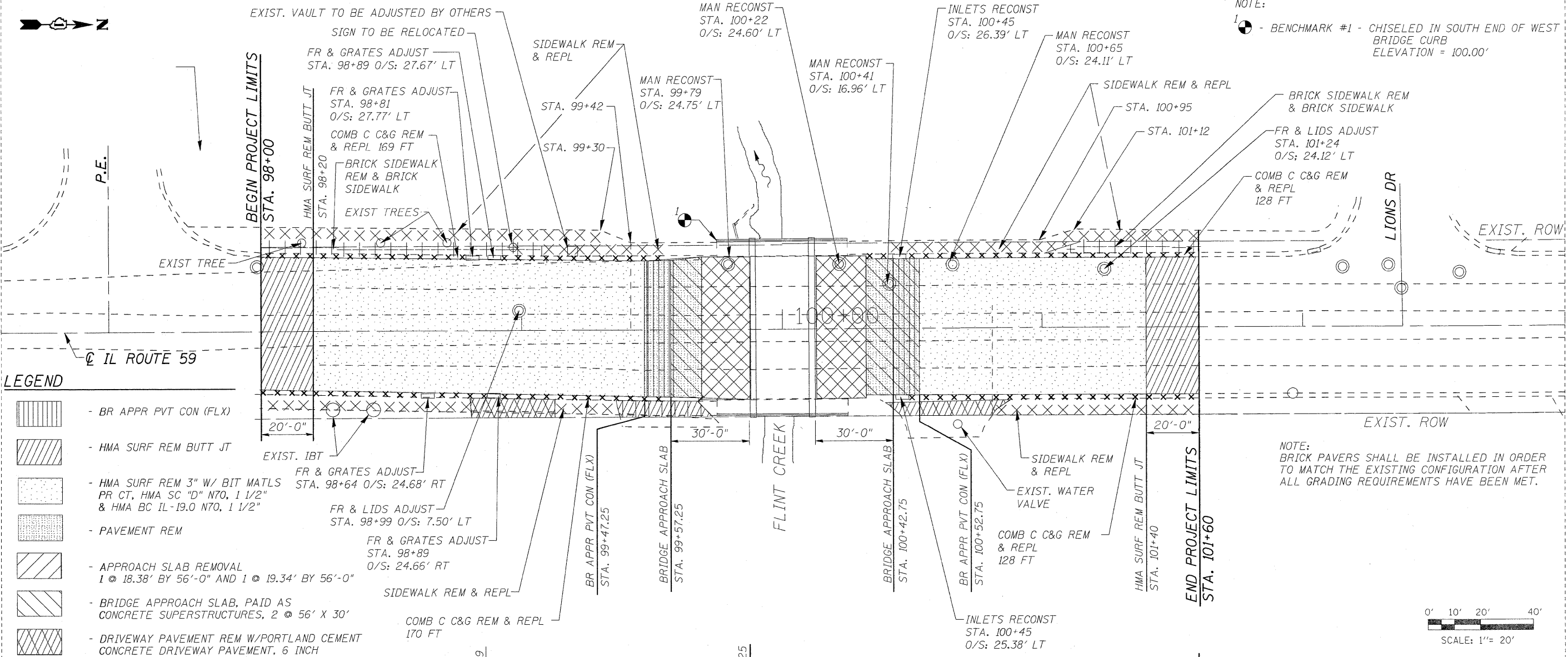
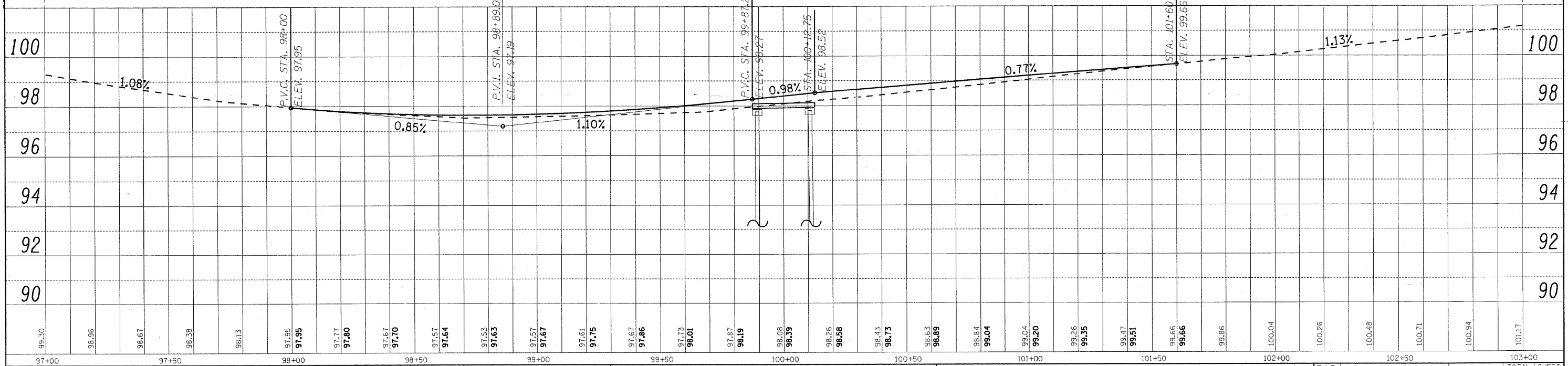


PLAN
 SURVEYED BY: _____
 DATE: _____
 ALIGNED CHECKED BY: _____
 RT. OF WAY CHECKED BY: _____
 NO. _____
 CAD FILE NAME: _____

PROF/1
 SURVEYED BY: _____
 DATE: _____
 PROFILE CHECKED BY: _____
 B.M. NOTED BY: _____
 STRUCTURE NOTATIONS CHFD: _____
 NO. _____



- LEGEND**
- BR APPR PVT CON (FLX)
 - HMA SURF REM BUTT JT
 - HMA SURF REM 3" W/ BIT MATLS PR CT, HMA SC "D" N70, 1 1/2" & HMA BC IL-19.0 N70, 1 1/2"
 - PAVEMENT REM
 - APPROACH SLAB REMOVAL 1 @ 18.38' BY 56'-0" AND 1 @ 19.34' BY 56'-0"
 - BRIDGE APPROACH SLAB, PAID AS CONCRETE SUPERSTRUCTURES, 2 @ 56' X 30'
 - DRIVEWAY PAVEMENT REM W/PORTLAND CEMENT CONCRETE DRIVEWAY PAVEMENT, 6 INCH



LONGO, INC.
 CONSULTING ENGINEERS
 1560 WALL ST, SUITE 222
 NAPERVILLE, ILLINOIS 60563 PH: (630) 577-9100

DESIGNED - MJY	REVISED -
DRAWN - ST, TSC	REVISED -
CHECKED - MJY, SLV	REVISED -
DATE - 03/26/2010	REVISED -

**STATE OF ILLINOIS
 DEPARTMENT OF TRANSPORTATION**

**PLAN AND PROFILE
 IL ROUTE 59 OVER FLINT CREEK TRIBUTARY**

SCALE: 1" = 20' SHEET NO. 1 OF 1 SHEETS STA. 98+00 TO STA. 101+60

F.A.P. RTE. 338	SECTION 108 B-1	COUNTY LAKE	TOTAL SHEETS 40	SHEET NO. 9
D-91-289-09			CONTRACT NO. 60F92	
FED. ROAD DIST. NO. ILLINOIS FED. AID PROJECT				