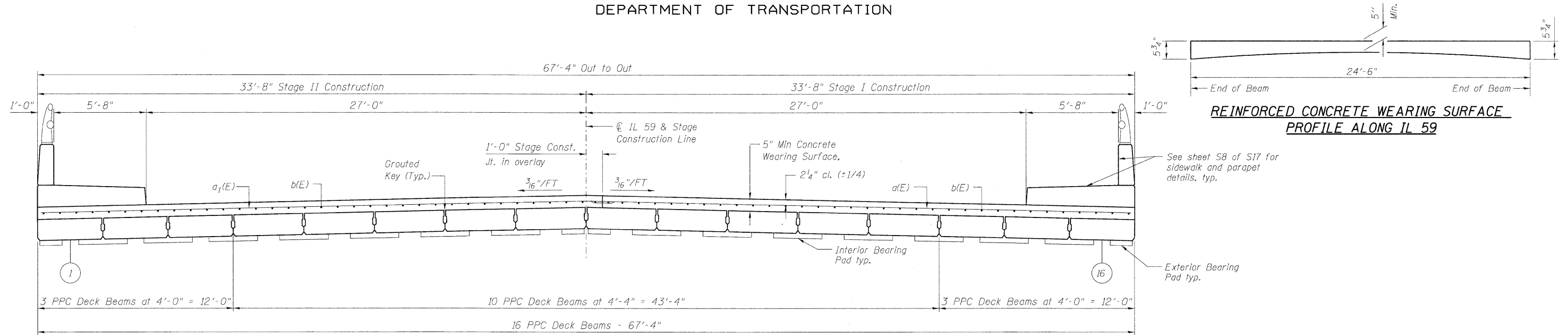


STATE OF ILLINOIS
DEPARTMENT OF TRANSPORTATION



REINFORCED CONCRETE WEARING SURFACE
PROFILE ALONG IL 59

See sheet S8 of S17 for sidewalk and parapet details, typ.

Exterior Bearing Pad typ.

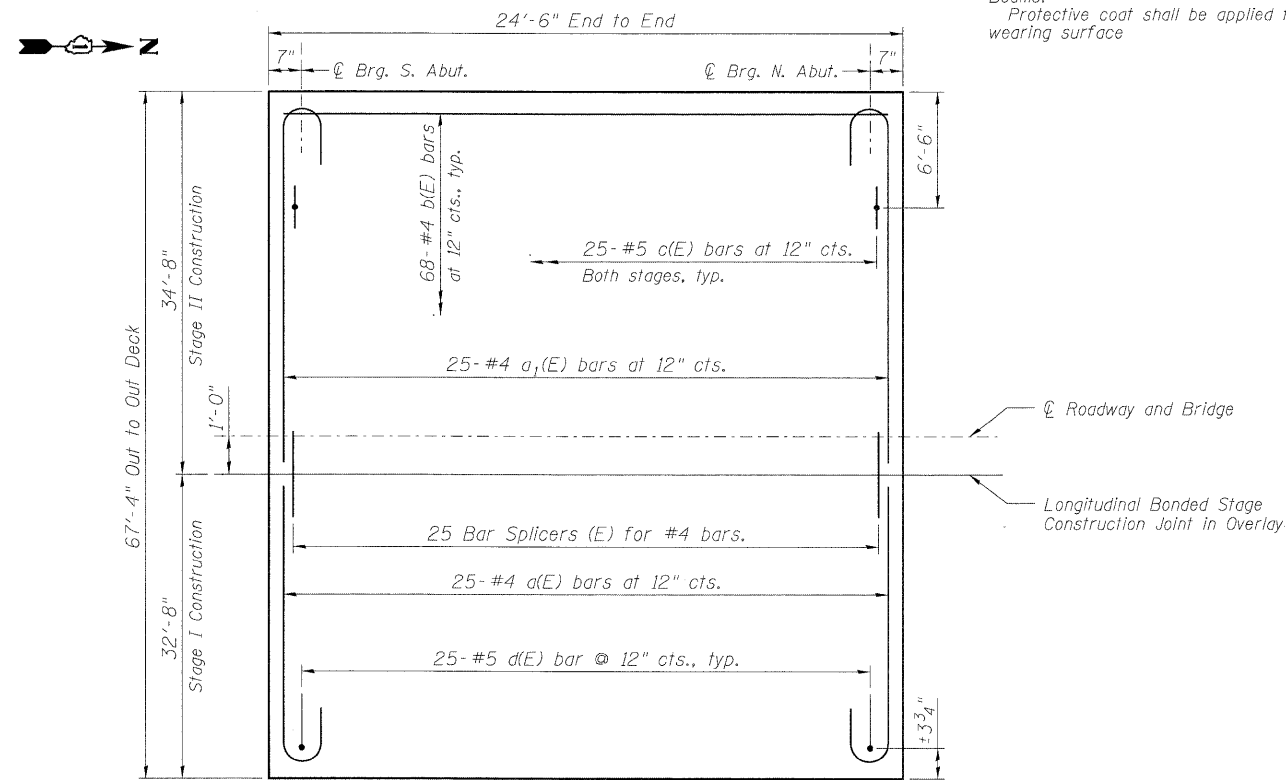
CROSS SECTION

NOTES

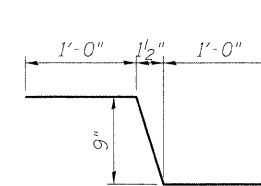
For remainder of Superstructure Details see Sheet S8 & S9 of S17.
See sht. S13 & S14 of S17 for PPC Deck Beams.
Protective coat shall be applied to new concrete wearing surface

BILL OF MATERIAL

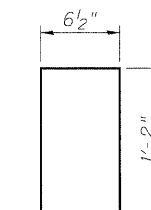
Bar	No.	Size	Length	Shape
a(E)	25	#4	32'-8"	C
a1(E)	25	#4	34'-8"	C
b(E)	68	#4	24'-2"	—
b1(E)	16	#5	24'-2"	—
b2(E)	28	#5	12'-8"	—
c(E)	106	#5	2'-9"	—
c1(E)	106	#5	5'-2"	—
d(E)	50	#5	3'-8"	—
d1(E)	56	#5	2'-11"	—
d2(E)	60	#5	2'-11"	—
e(E)	24	#4	11'-11"	—
e1(E)	24	#4	12'-8"	—
Concrete Wearing Surface	5"	Sq. Yd.	184	
Bar Splicers		Each	25	
Concrete Removal		Cu. Yd.	12.0	
Concrete Superstructure		Cu. Yd.	8.1	
Reinforcement Bars, Epoxy Coated		Pound	4810	



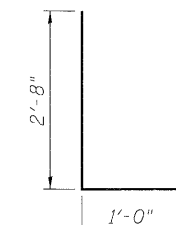
CONCRETE WEARING SURFACE PLAN



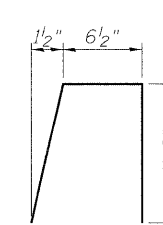
BAR c(E)



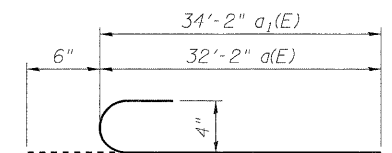
BAR d1(E)



BAR d(E)



BAR d2(E)



BAR a(E) & a1(E)

DESIGNED	SLV
CHECKED	DJB
DRAWN	SLV
CHECKED	DJB

LONCO, INC.
CONSULTING ENGINEERS
1560 WALL ST, SUITE 222
NAPERVILLE, ILLINOIS 60563 PH: (630) 577-9100

SUPERSTRUCTURE
STRUCTURE NO. 049-0152

SHEET NO. S7 OF S17 SHEETS	F.A.P. RTE.	SECTION	COUNTY	TOTAL SHEETS	SHEET NO.
	338	108 B-1	LAKE	40	19
D-91-289-09			CONTRACT NO. 60F92		
FED. ROAD DIST. NO. ILLINOIS FED. AID PROJECT					