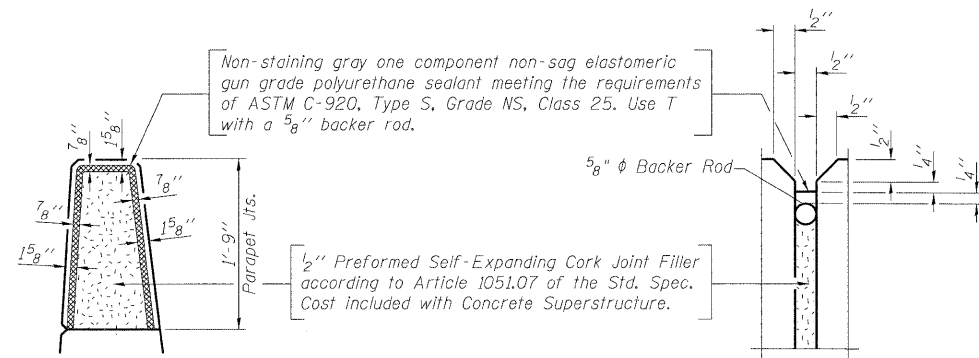


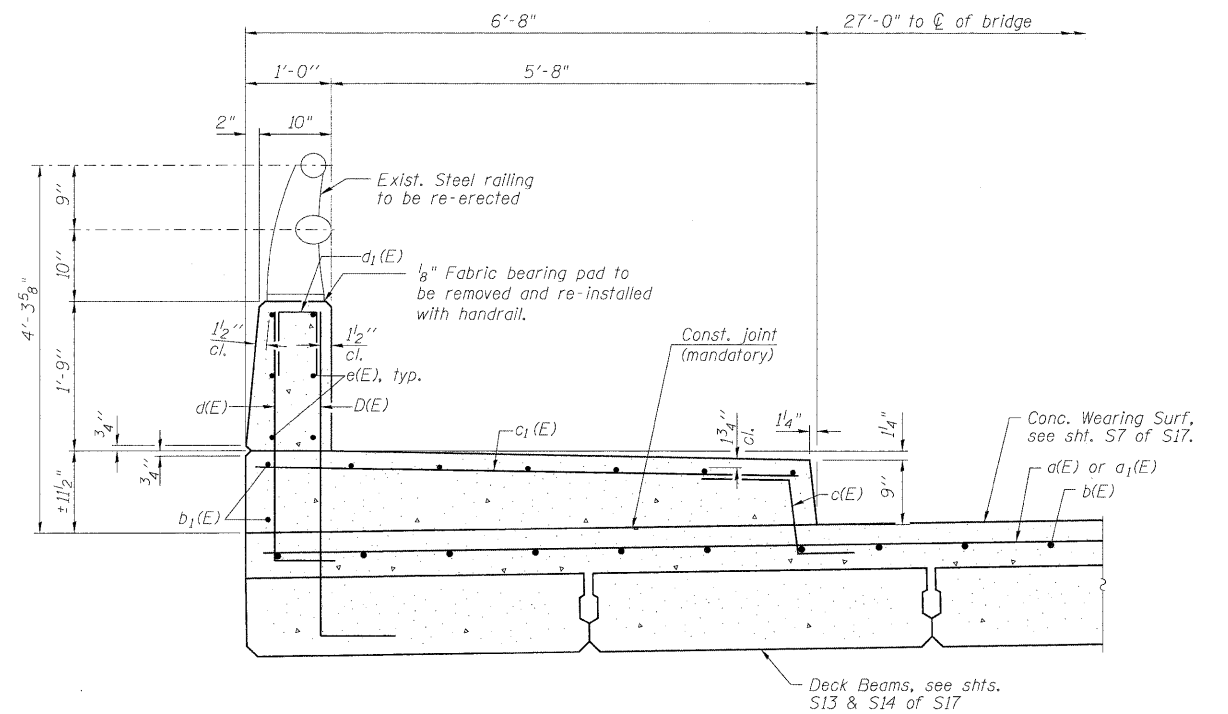
STATE OF ILLINOIS
DEPARTMENT OF TRANSPORTATION



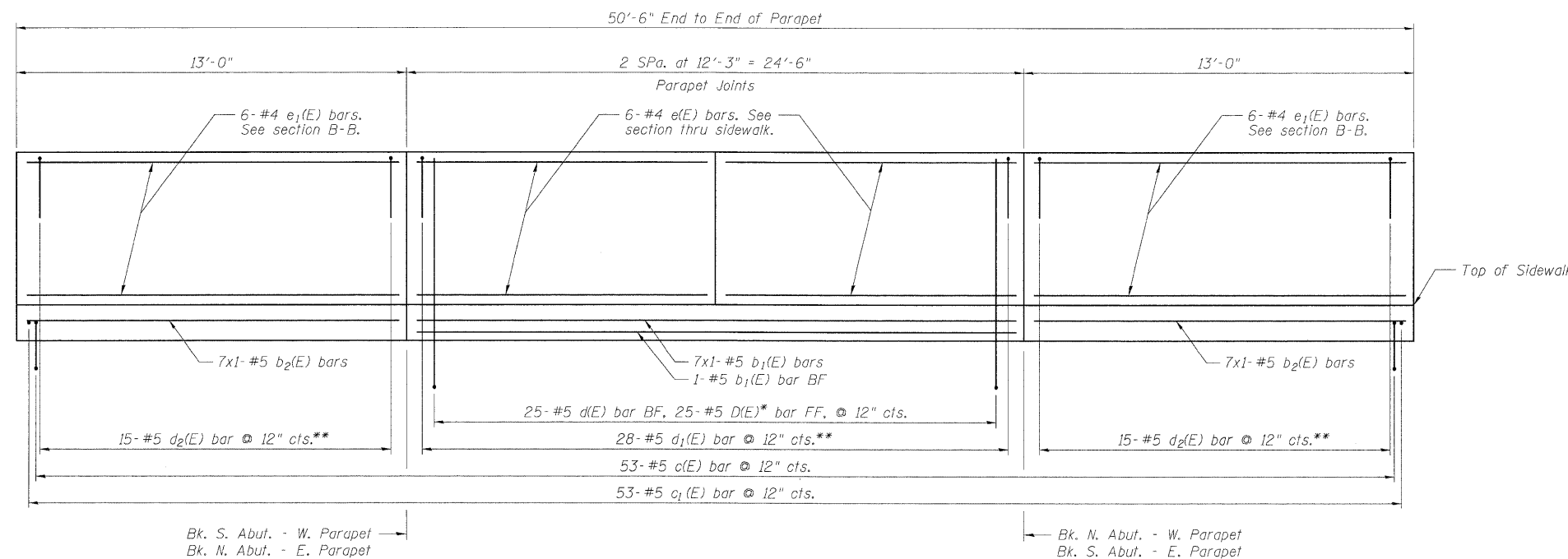
PARAPET JOINT DETAILS

NOTES

See sht. S9 of S17 for Sect B-B and Sidewalk & Parapet Plan.
See sht. S7 of S17 for Bill of Material.
Protective coat shall be applied to top and front face of parapet along with sidewalk.



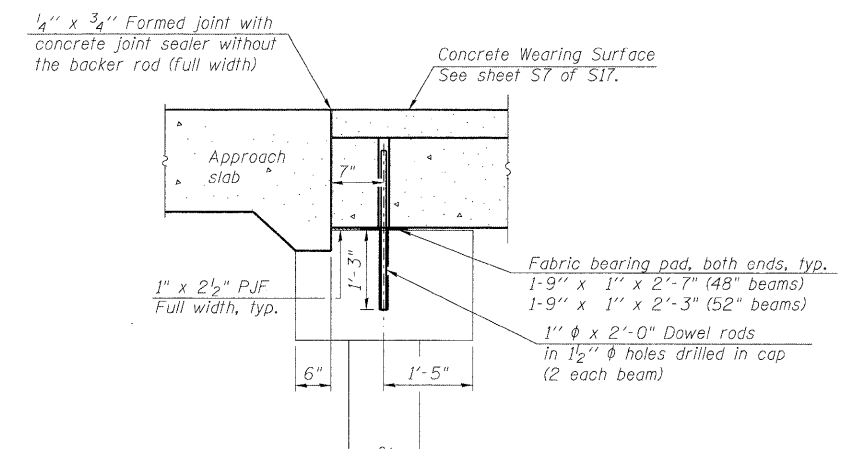
SECTION THRU SIDEWALK



INSIDE PARAPET ELEVATION

Bars indicated thus 7x1- #5, etc., indicates 7 lines of bars with 1 length per line.

* D(E) bars cast in place in each outside beam. See sht S14 of S17 for details.
** Place two d1(E) or d2(E) bars under each rail post (included in total bars).



SECTION THRU FIXED ABUTMENT

Notes:

After beams have been erected, holes shall be drilled into substructure and anchor dowels placed. Dowel holes shall be filled with non-shrink grout to top of beam and allowed to cure min. 24 hrs. prior to grouting the shear keys.
All horizontal dimensions are at right angles to beam ends. See sheet S13 & S14 of S17 for 52" and 48" beam bearing pad details.

SUPERSTRUCTURE DETAILS
STRUCTURE NO. 049-0152

SHEET NO. S8 OF S17 SHEETS	F.A.P. RTE.	SECTION	COUNTY	TOTAL SHEETS	SHEET NO.
	338	108 B-1	LAKE	40	20
D-91-289-09			CONTRACT NO. 60F92		
FED. ROAD DIST. NO. ILLINOIS FED. AID PROJECT					

DESIGNED -	SLV
CHECKED -	DJB
DRAWN -	SLV
CHECKED -	DJB

LOXCO, INC.
CONSULTING ENGINEERS
1560 WALL ST, SUITE 222
NAPERVILLE, ILLINOIS 60563 PH: (630) 577-9100