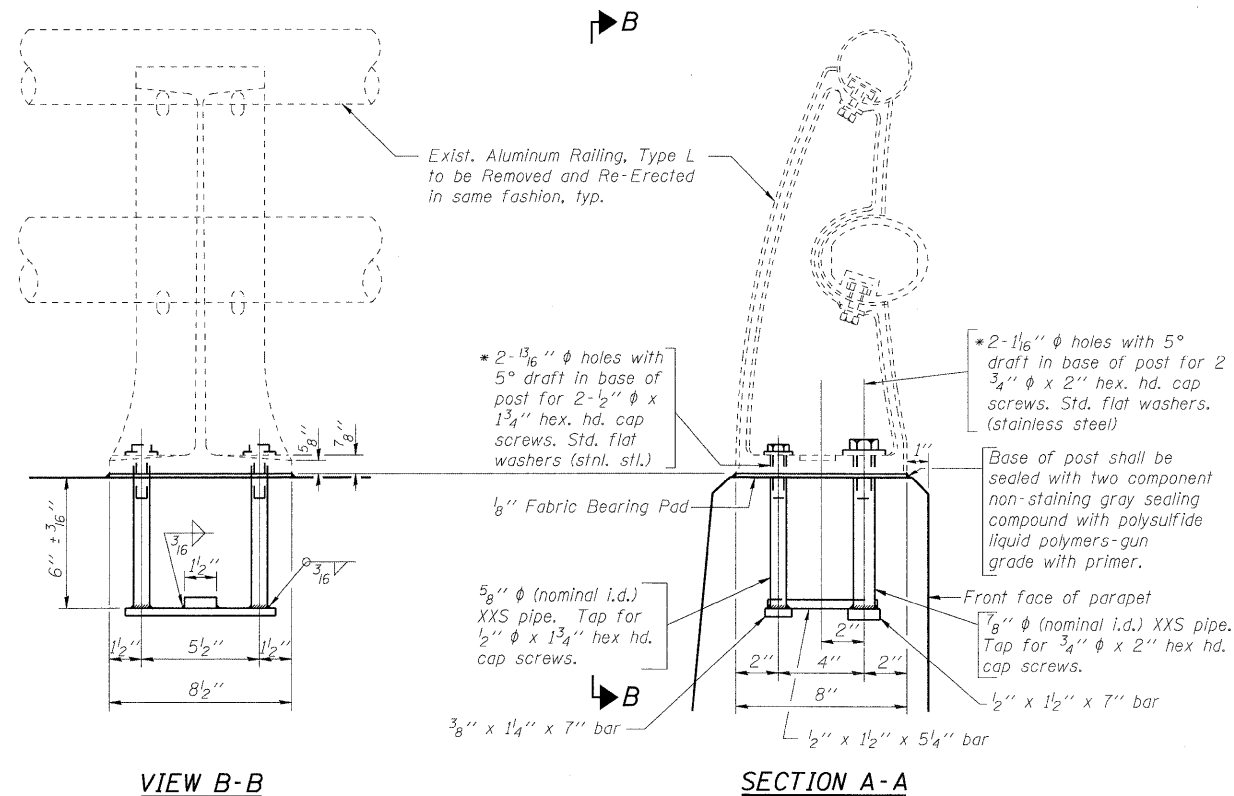


STATE OF ILLINOIS
DEPARTMENT OF TRANSPORTATION

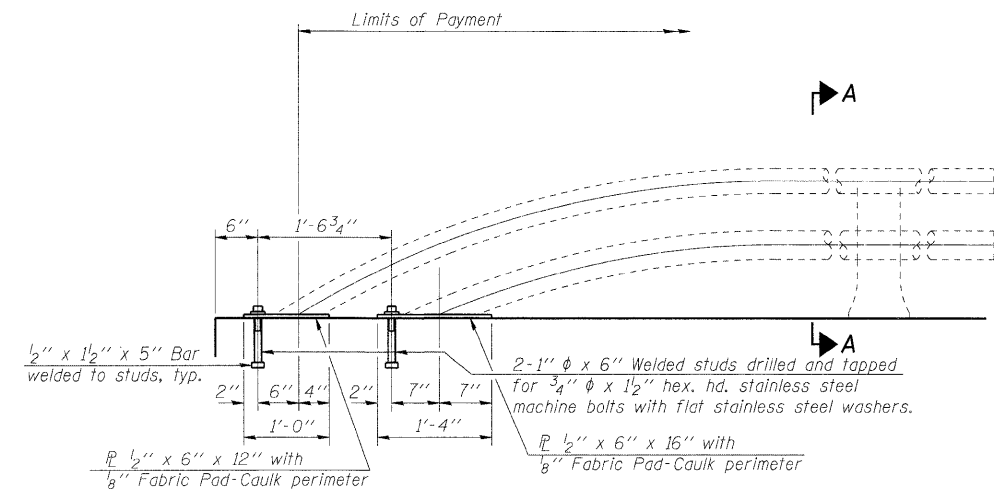


VIEW B-B

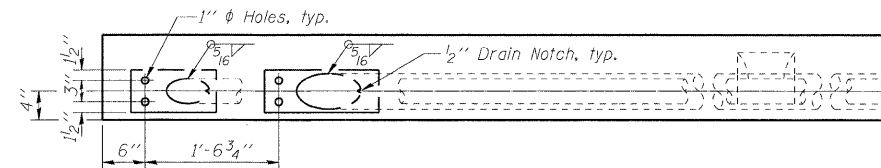
RAIL POST DETAILS

SECTION A-A

* In lieu of the cast-in-place anchor device shown, the Contractor has the option of drilling and setting stainless steel anchor rods of the same diameter and grade as the specified cap screws according to Article 509.06 of the Standard Specifications. Embedment shall be according to the manufacturer's specifications.



RAIL TERMINAL SECTION



BILL OF MATERIAL

Item	Unit	Quantity
Removing and Re-Erecting Existing Railing	Foot	97

DESIGNED -	SLV
CHECKED -	DJB
DRAWN -	SLV
CHECKED -	DJB

LONCO, INC.
CONSULTING ENGINEERS
1560 WALL ST. SUITE 222
NAPERVILLE, ILLINOIS 60563 PH: (630) 577-9100

RAILING DETAILS
STRUCTURE NO. 049-0152

SHEET NO. S10	F.A.P. RTE.	SECTION	COUNTY	TOTAL SHEETS	SHEET NO.
OF S17 SHEETS	338	108 B-1	LAKE	40	22
D-91-289-09			CONTRACT NO. 60F92		
FED. ROAD DIST. NO. _		ILLINOIS	FED. AID PROJECT		