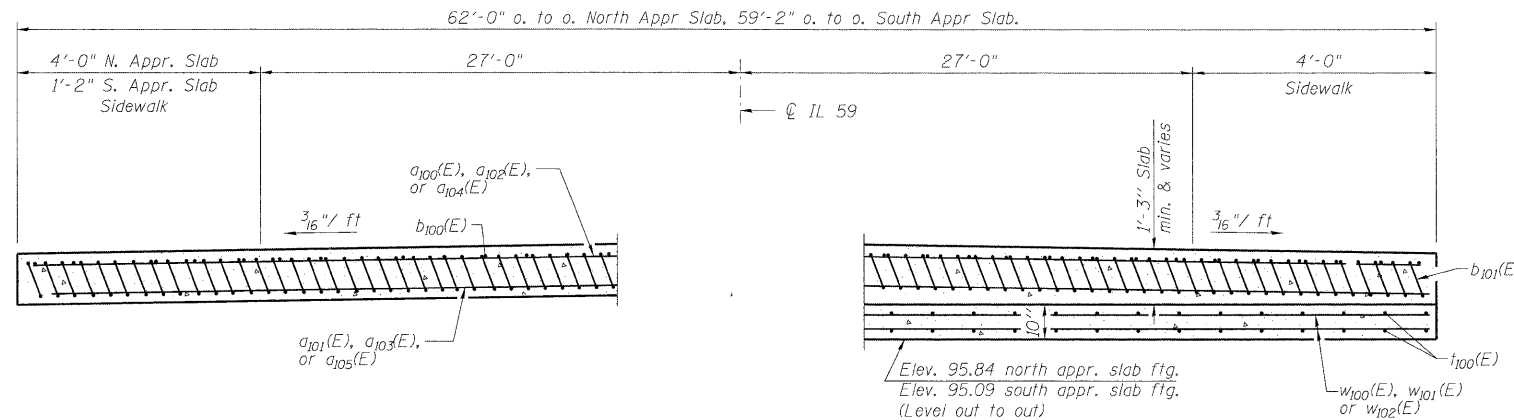
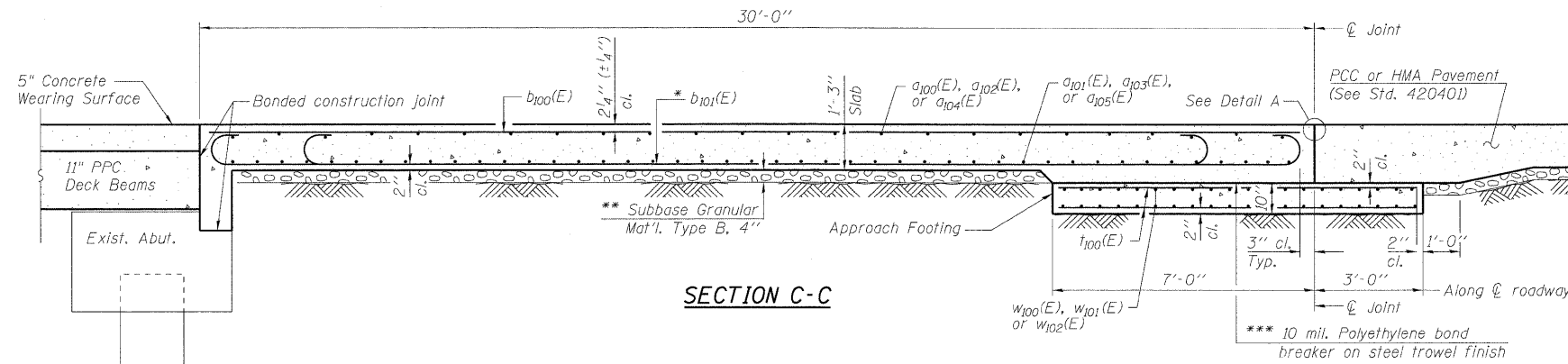


STATE OF ILLINOIS  
DEPARTMENT OF TRANSPORTATION

Notes:  
See sheet S11 of S17 for Plan Views and Detail.  
Approach slab shall be paid for as Concrete Superstructure.  
Approach footing concrete shall be paid for as Concrete Structures.  
Reinforcement shall be paid for as Reinforcement Bars, Epoxy Coated.  
The approach footing maximum applied service bearing pressure ( $Q_{max}$ ) = 2.0 ksf.  
For bar splicer details, see sheet S17 of S17.  
Cost of excavation for approach footing included with Concrete Structures.

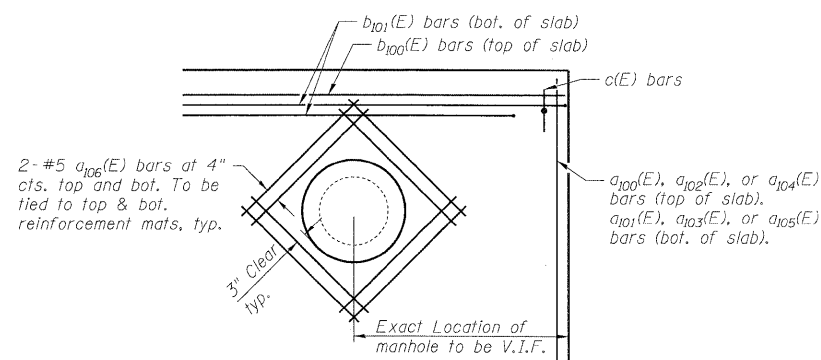


\* Tilt #9  $b_{101}(E)$  bars as required to maintain clearance.  
\*\*\* Cost included with Concrete Superstructure.

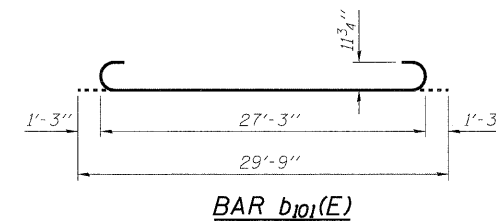
NEAR ABUTMENT

SECTION D-D  
(See Plan for dimensions not shown)

AT APPROACH FOOTING



DETAIL E  
PARTIAL PLAN FOR  
MANHOLE REINFORCEMENT



TWO APPROACHES  
BILL OF MATERIAL

Bar	No.	Size	Length	Shape
$a_{100}(E)$	50	#4	29'-6"	—
$a_{101}(E)$	92	#5	29'-6"	—
$a_{102}(E)$	25	#4	31'-6"	—
$a_{103}(E)$	46	#5	31'-6"	—
$a_{104}(E)$	25	#4	28'-8"	—
$a_{105}(E)$	46	#5	28'-8"	—
$a_{106}(E)$	48	#5	4'-0"	—
$b_{100}(E)$	96	#4	29'-8"	—
$b_{101}(E)$	289	#9	29'-9"	—
$l_{100}(E)$	246	#4	9'-6"	—
$w_{100}(E)$	80	#5	29'-6"	—
$w_{101}(E)$	40	#5	31'-6"	—
$w_{102}(E)$	40	#5	28'-8"	—
Concrete Superstructure			Cu. Yd.	180.2
Concrete Structures			Cu. Yd.	37.4
Reinforcement Bars, Epoxy Coated			Pound	45580
Bar Splicers			Each	222

DESIGNED	-	SLV
CHECKED	-	DJB
DRAWN	-	SLV
CHECKED	-	DJB

LONGCO, INC.  
CONSULTING ENGINEERS  
1560 WALL ST, SUITE 222  
NAPERVILLE, ILLINOIS 60563 PH: (630) 577-9100

(Sheet 2 of 2)  
BRIDGE APPROACH SLAB DETAILS  
STRUCTURE NO. 049-0152

SHEET NO. S12 OF S17 SHEETS	F.A.P. RTE.	SECTION	COUNTY	TOTAL SHEETS	SHEET NO.
	338	108 B-1	LAKE	40	24
D-91-289-09			CONTRACT NO. 60F92		
FED. ROAD DIST. NO. _ ILLINOIS FED. AID PROJECT					