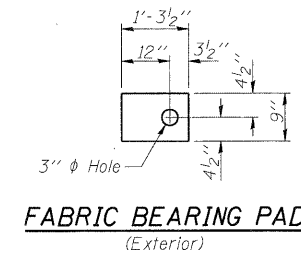
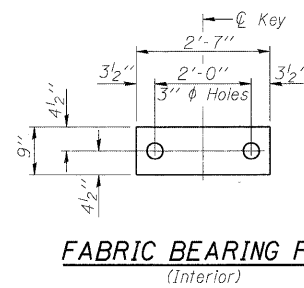
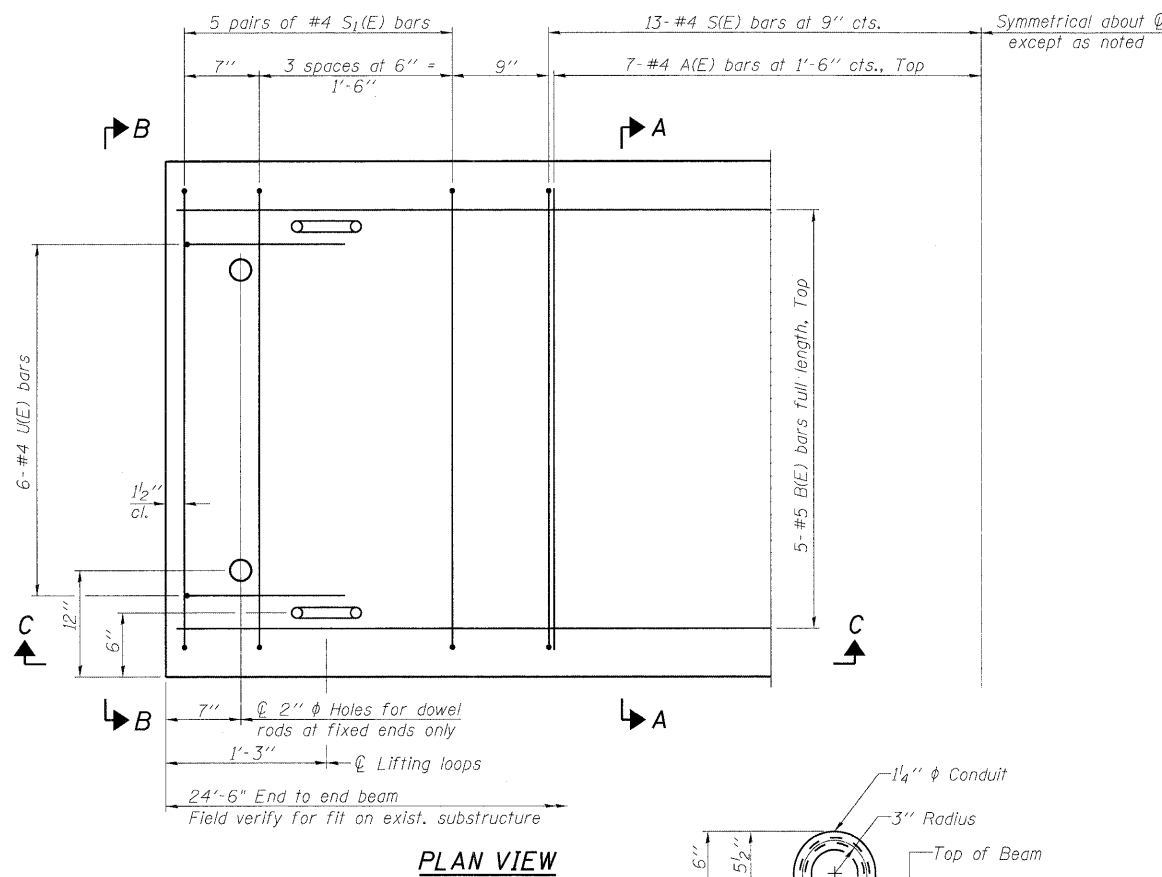
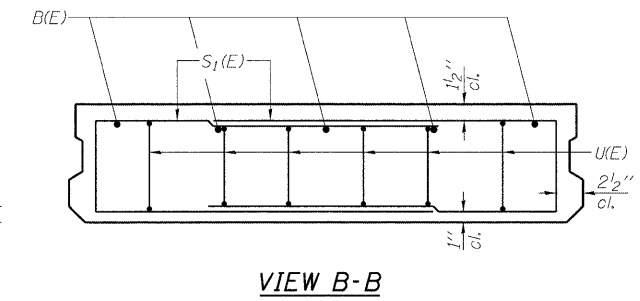
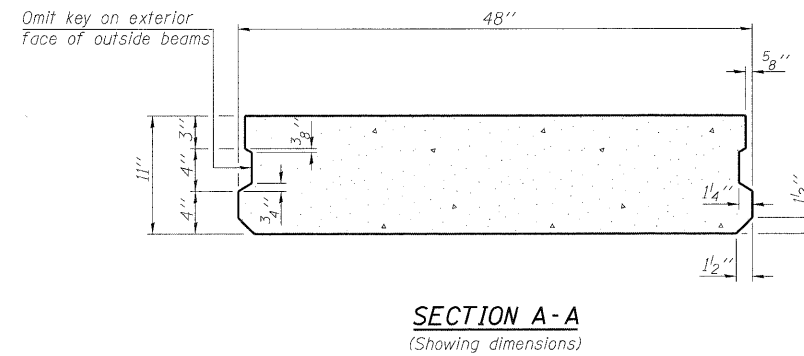
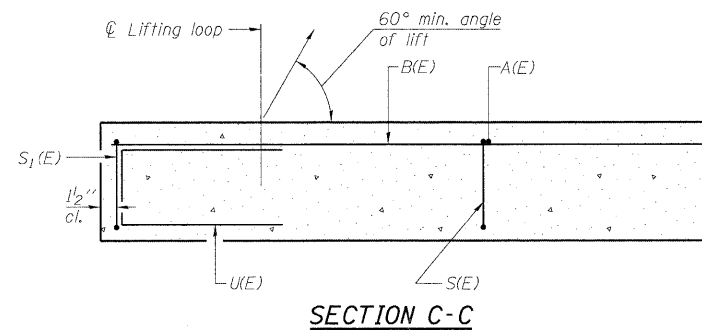
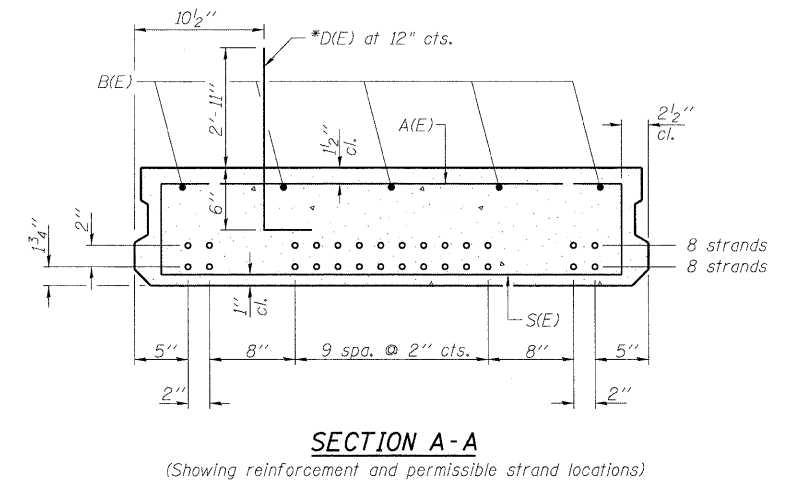


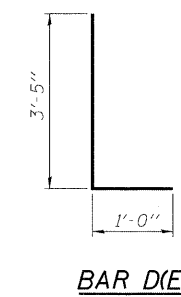
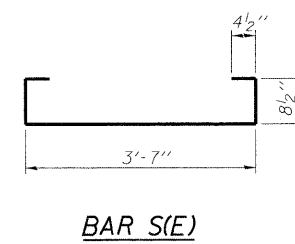
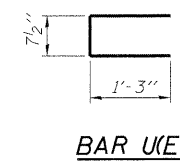
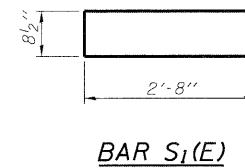
STATE OF ILLINOIS
DEPARTMENT OF TRANSPORTATION



Notes:
All bearing pads shall be 1" thick.
Omit holes when using expansion bearings.
Expansion bearing pad shall be bonded to the substructure.



Note: Place the number of strands specified in each row symmetrically about the centerline of beam in the permissible strand locations shown.



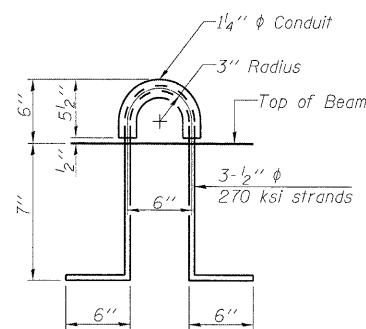
BAR LIST
ONE BEAM ONLY
(For information only)

Bar	No.	Size	Length	Shape
A(E)	14	#4	3'-7"	—
B(E)	5	#5	24'-2"	—
*D(E)	25	#5	4'-5"	┌
S(E)	26	#4	5'-9"	┌
S1(E)	20	#4	6'-1"	┌
U(E)	12	#4	3'-2"	┌

*D(E) bar to be cast into outside beams only. See sht. S8 of S17 for details.

BILL OF MATERIAL

Material	Sq. Ft.	588
Precast Prestressed Conc. Deck Bms. (11" depth)		



LIFTING LOOP DETAIL

NOTES

Prestressing steel shall be uncoated high strength, low relaxation 7-wire strand, Grade 270. The nominal diameter shall be 1/2" and the nominal cross-sectional area shall be 0.153 sq. in. Reinforcement bars shall conform to ASTM A 706, Grade 60. (See Special Provisions). Two 1/8" fabric adjusting shims of the dimensions of the exterior bearing pad shall be provided for each bearing pad location. A minimum 2 1/2" diameter lifting pin shall be used to engage the lifting loops during handling. Corrosion inhibitor, per Article 1020.05(b)(12) and 1021.06 of the Standard Specifications, shall be used in the concrete for precast prestressed concrete deck beams. Compressive strength of prestressed concrete, f'c, shall be 6000 psi. Compressive strength of prestressed concrete at release, f'ci, shall be 5000 psi. See sheet S13 of S17 for 11"x52" PPC Deck Beams.

DESIGNED	SLV
CHECKED	DJB
DRAWN	SLV
CHECKED	DJB

LONCO, INC.
CONSULTING ENGINEERS
1560 WALL ST., SUITE 222
NAPERVILLE, ILLINOIS 60563 PH: (630) 577-9100

11" x 48" PPC DECK BEAMS
STRUCTURE NO. 049-0152

SHEET NO. S14	F.A.P. RTE.	SECTION	COUNTY	TOTAL SHEETS	SHEET NO.
	338	108 B-1	LAKE	40	26
OF S17 SHEETS	D-91-289-09		CONTRACT NO. 60F92		
FED. ROAD DIST. NO. ILLINOIS FED. AID PROJECT					