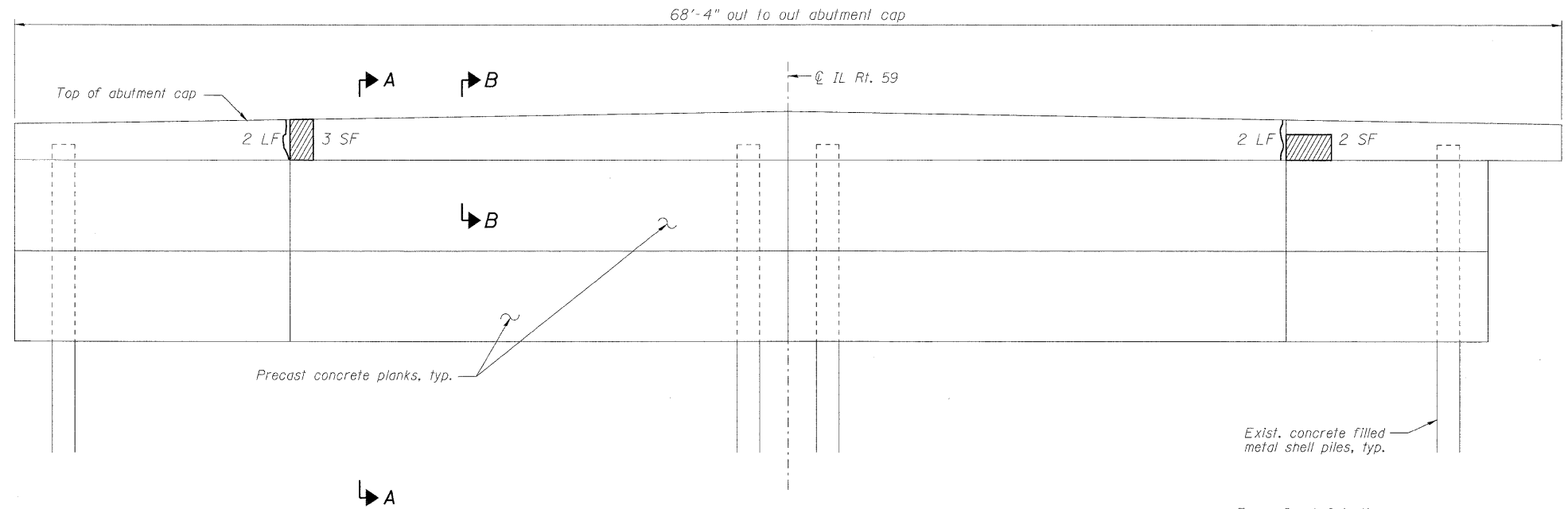
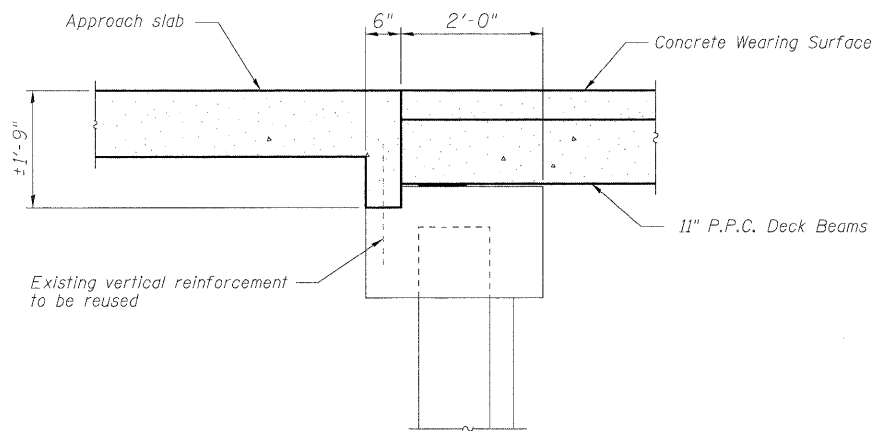


STATE OF ILLINOIS
DEPARTMENT OF TRANSPORTATION

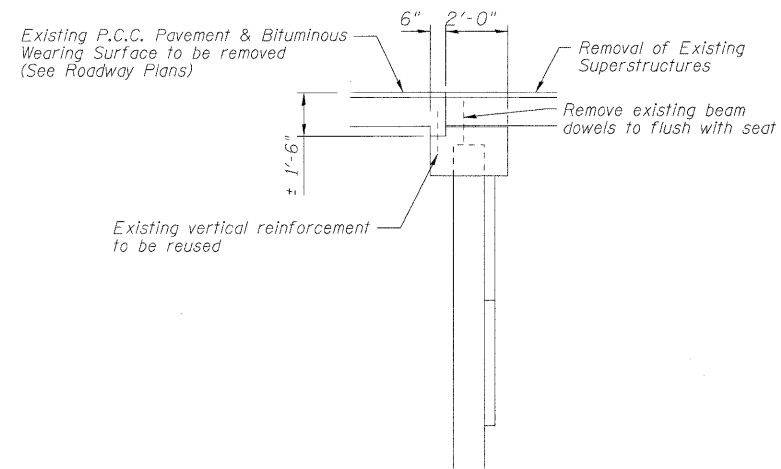


ELEVATION - REMOVAL AND REPAIR
(Looking North)

— Epoxy Crack Injection
 Formed Concrete Repair Depth < 5"



SECTION B-B



BILL OF MATERIAL

| | | |
|---|---------|---|
| Epoxy Crack Injection | Foot | 4 |
| Structural Repair of Concrete (Depth less than equal to 5") | Sq. Ft. | 5 |

NOTES

Drilling and epoxy grouting of reinforcement bars shall be in accordance with Article 584 of the Standard Specifications and shall be paid for as Reinforcement Bars, Epoxy Coated

| | | |
|----------|---|-----|
| DESIGNED | - | SLV |
| CHECKED | - | DJB |
| DRAWN | - | SLV |
| CHECKED | - | DJB |

LONGCO, INC.
CONSULTING ENGINEERS
1560 WALL ST, SUITE 222
NAPERVILLE, ILLINOIS 60563 PH: (630) 577-9100

SOUTH ABUTMENT DETAILS
STRUCTURE NO. 049-0152

| | | | | | |
|---|-------------|---------|--------------------|--------------|-----------|
| SHEET NO. S16 OF S17 SHEETS | F.A.P. RTE. | SECTION | COUNTY | TOTAL SHEETS | SHEET NO. |
| | 338 | 108 B-1 | LAKE | 40 | 28 |
| D-91-289-09 | | | CONTRACT NO. 60F92 | | |
| FED. ROAD DIST. NO. _ ILLINOIS FED. AID PROJECT | | | | | |