

F.A.P. RTE.	SECTION	COUNTY	TOTAL SHEETS	SHEET NO.
370	2009-015 T	COOK	20	1
FED. ROAD DIST. NO. 1	ILLINOIS	CONTRACT NO. 60G15		

STATE OF ILLINOIS  
DEPARTMENT OF TRANSPORTATION  
DIVISION OF HIGHWAYS

**PROPOSED  
HIGHWAY PLANS**

F.A.P. 370 / WESTERN AVENUE  
SECTION: 2009-015 T  
87TH STREET TO 91ST STREET  
DRAINAGE IMPROVEMENT

COOK COUNTY  
C-91-344-09  
WORTH AND CALUMET TOWNSHIP  
R. 14 E.

FOR INDEX OF SHEETS, SEE SHEET NO. 2

DESIGN DESIGNATION: OTHER PRINCIPAL ARTERIAL  
SPEED LIMIT : 35 M.P.H.  
2005 ADT = 30,000

PROJECT LOCATED IN THE  
CITY OF CHICAGO AND THE  
VILLAGE OF EVERGREEN PARK

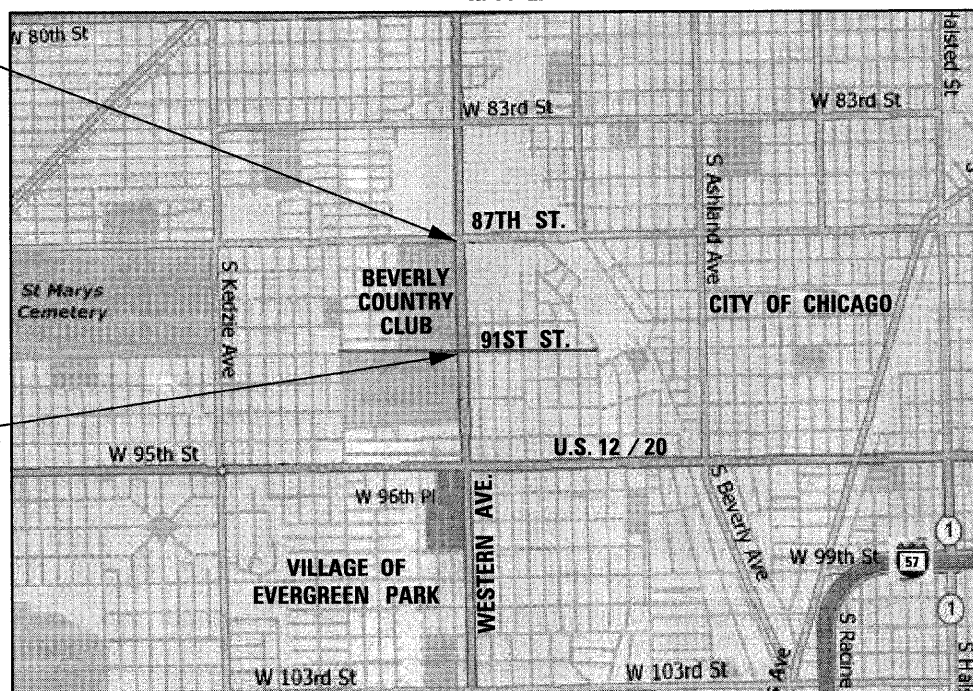
D-91-344-09



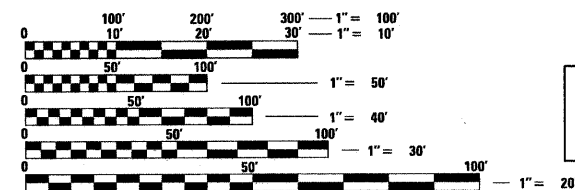
LOCATION OF SECTION INDICATED THUS: -

PROJECT ENDS  
STA. 46 + 00

PROJECT BEGINS  
STA. 20 + 00



GROSS LENGTH OF PROJECT = 2,600.00 FEET = 0.492 MILES  
NET LENGTH OF PROJECT = 2,600.00 FEET = 0.492 MILES



FULL SIZE PLANS HAVE BEEN PREPARED USING STANDARD ENGINEERING SCALES. REDUCED SIZED PLANS WILL NOT CONFORM TO STANDARD SCALES. IN MAKING MEASUREMENTS ON REDUCED PLANS, THE ABOVE SCALES MAY BE USED.

J.U.L.I.E.  
JOINT UTILITY LOCATING INFORMATION FOR EXCAVATORS  
1-800-892-0123 OR 811  
AND  
C.U.A.N.  
CHICAGO UTILITY ALERT NETWORK  
1-312-744-7000

DISTRICT ONE - DESIGN  
PROJECT MANAGER : ISAAC KWARTENG (847) 705-4230  
PROJECT ENGINEER : ALIX BRICE (847) 705-4552  
CONTRACT NO. 60G15

DESIGN SECTION ENGINEER :

CHRISTIAN-ROGE & ASSOCIATES, INC.  
ENGINEERS - PLANNERS - SURVEYORS  
211 W. WACKER DRIVE CHICAGO, IL 60606  
TELEPHONE: 312-372-2023



Birinder S. Sachdeva  
BIRINDER S. SACHDEVA, P.E.  
EXPIRES: 11-30-2011  
March 15, 2010  
DATE

STATE OF ILLINOIS  
DEPARTMENT OF TRANSPORTATION  
DIVISION OF HIGHWAYS  
SUBMITTED MARCH 18 2010  
Diane M. O'Keefe  
DEPUTY DIRECTOR OF HIGHWAYS, REGION ONE ENGINEER  
May 7 2010  
Scott E. Stitt, P.E.  
ENGINEER OF DESIGN AND ENVIRONMENT  
May 7 2010  
Christine M. Roadie  
DIRECTOR OF HIGHWAYS, CHIEF ENGINEER

PRINTED BY THE AUTHORITY  
OF THE STATE OF ILLINOIS