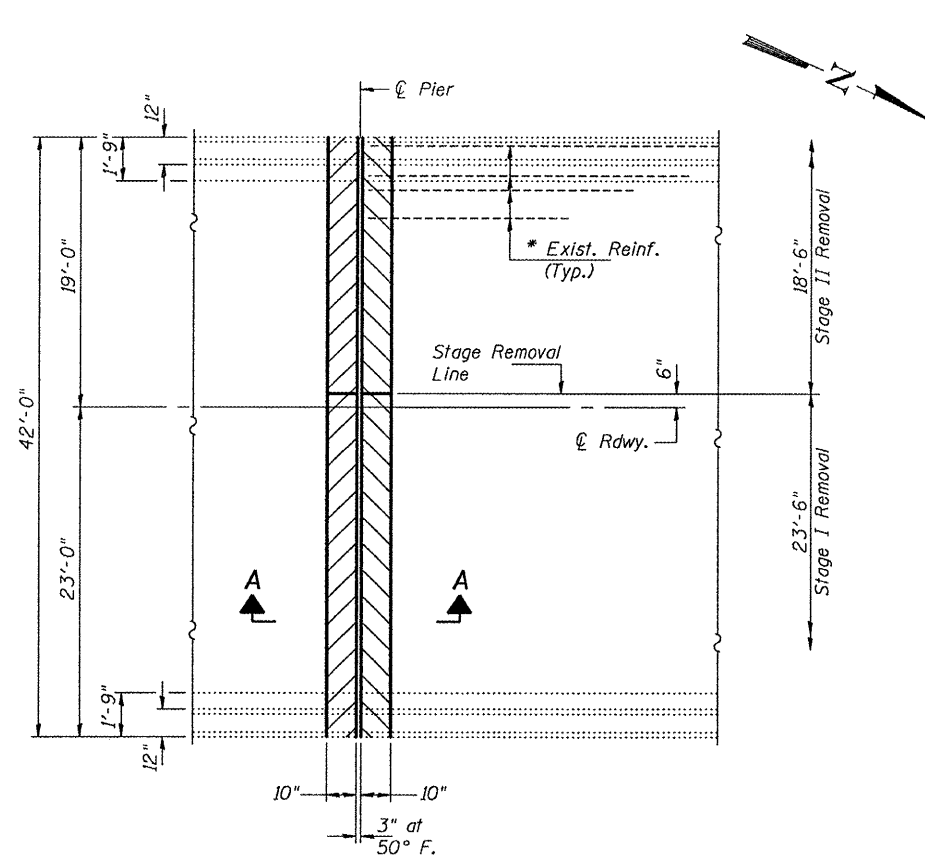
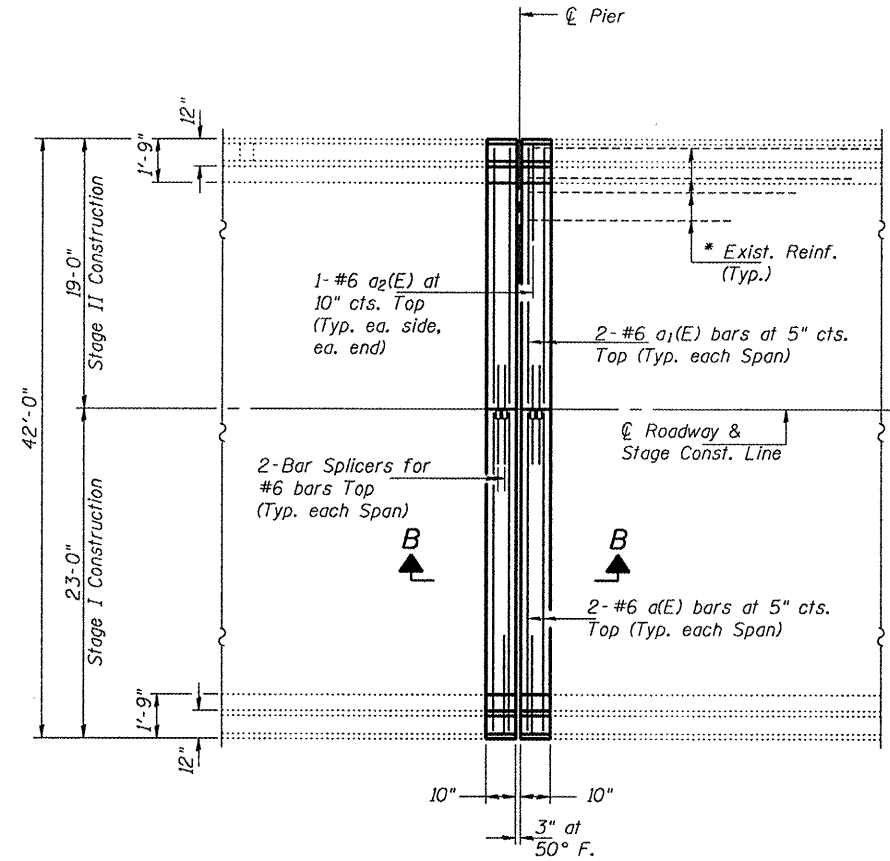


STATE OF ILLINOIS
DEPARTMENT OF TRANSPORTATION

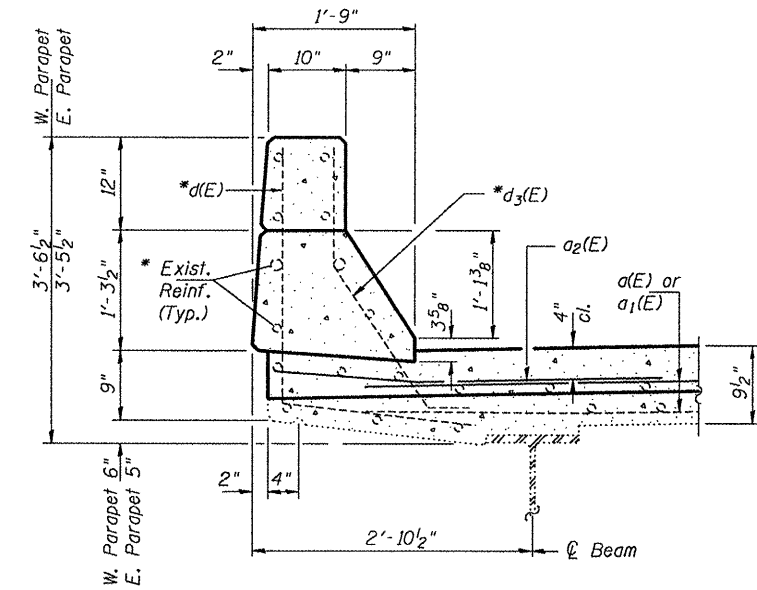


PARTIAL PLAN SHOWING CONCRETE REMOVAL

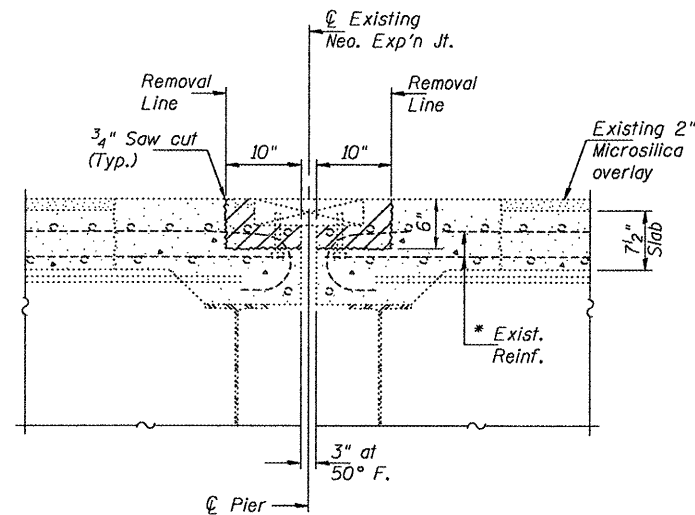


PARTIAL PLAN SHOWING CONCRETE REPLACEMENT

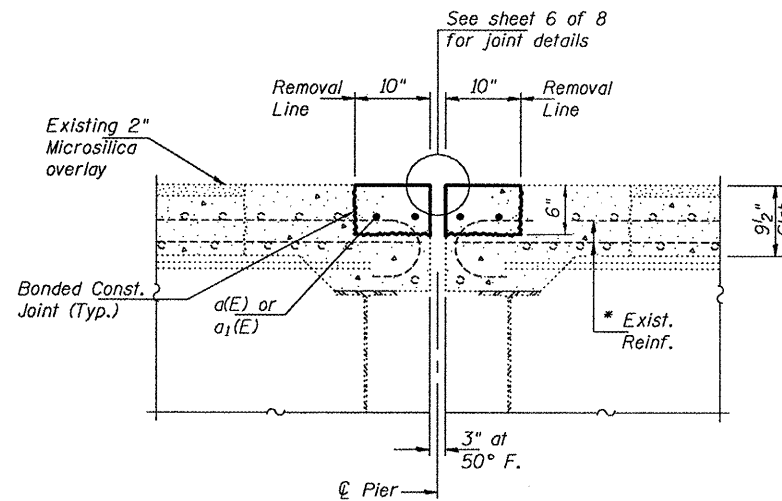
* Existing reinforcement extending into the removal area shall be cleaned, straightened and incorporated into the new construction. Any reinforcement bars that are damaged during concrete removal shall be replaced with an approved bar splicer or anchorage system. Cost shall be included with Concrete Removal.



TYPICAL SECTION THRU CURB



SECTION A-A



SECTION B-B

BILL OF MATERIAL

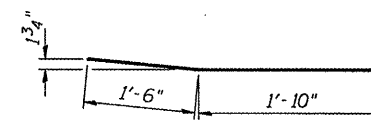
Bar	No.	Size	Length	Shape
a(E)	12	#6	21'-6"	
a1(E)	12	#6	17'-6"	
a2(E)	12	#6	4'-0"	
Concrete Removal			Cu. Yd.	4.8
Concrete Superstructure			Cu. Yd.	4.8
Reinforcement Bars, Epoxy Coated			Pounds	780

PIERS 15, 21 AND 29
JOINT DETAILS

SN 016-2467

DESIGNED	A.T.H.
CHECKED	G.G.E.
DRAWN	Drew Christopher
CHECKED	A.T.H. G.G.E.

EXAMINED	May 3, 2010
PASSED	Carl Perry Ralph E. Anderson



BAR a2(E)

SHEET NO. 5	F.A.P. RTE.	SECTION	COUNTY	TOTAL SHEETS	SHEET NO.
	330	2009-1331	Cook	28	10
8 SHEETS	FED. ROAD DIST. NO. ILLINOIS		CONTRACT NO. 60H89		