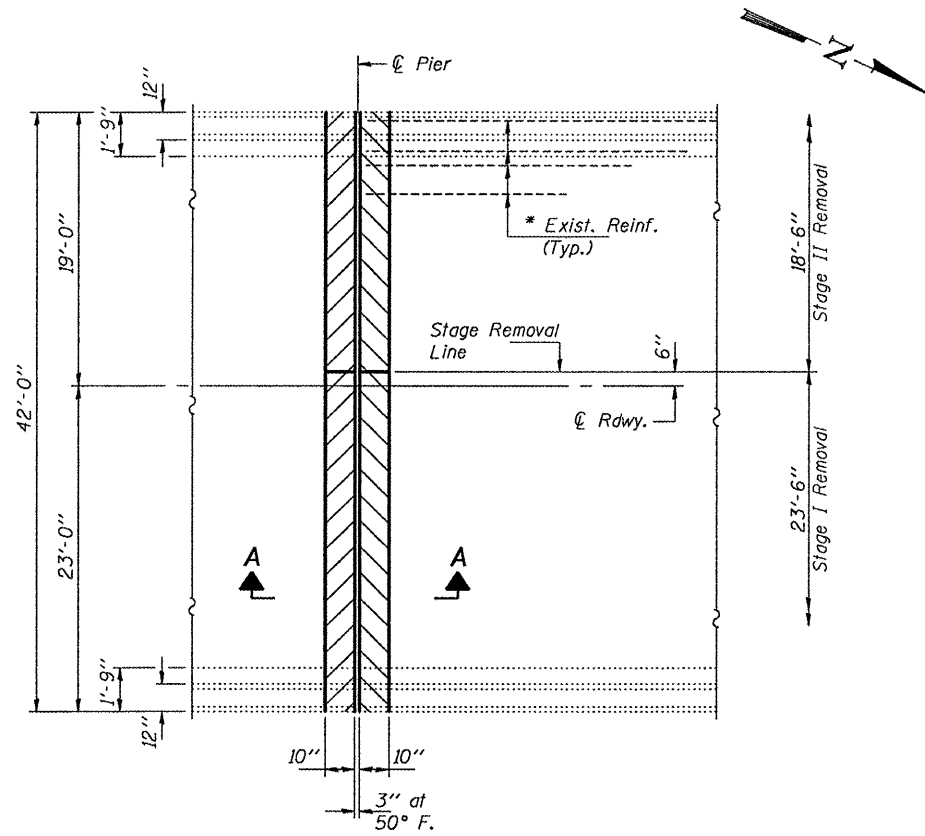
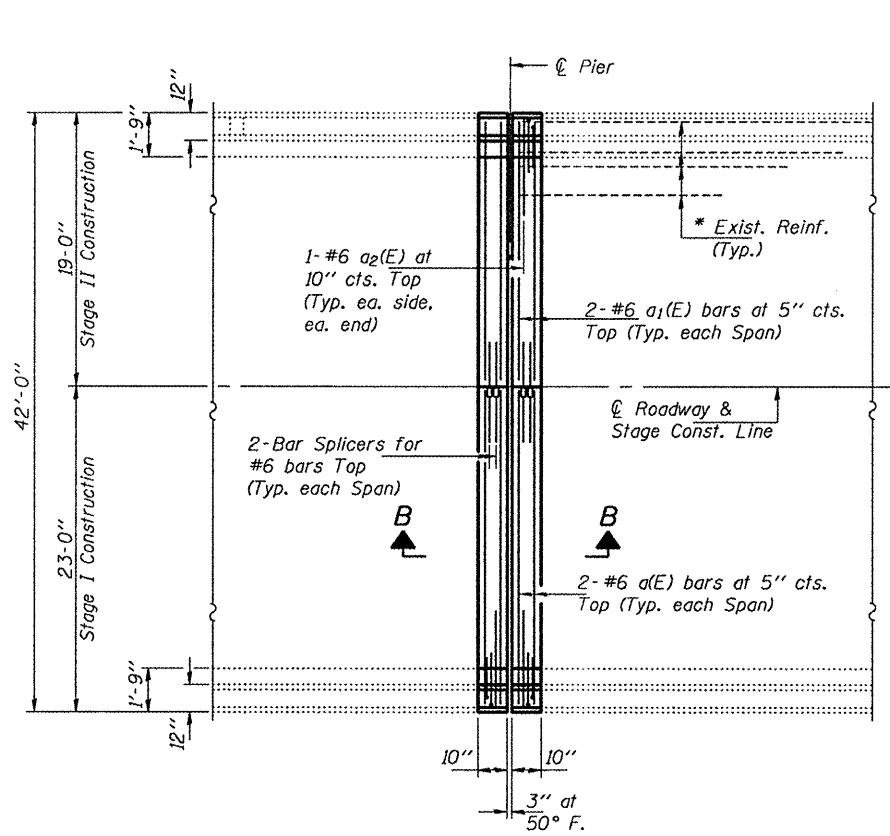


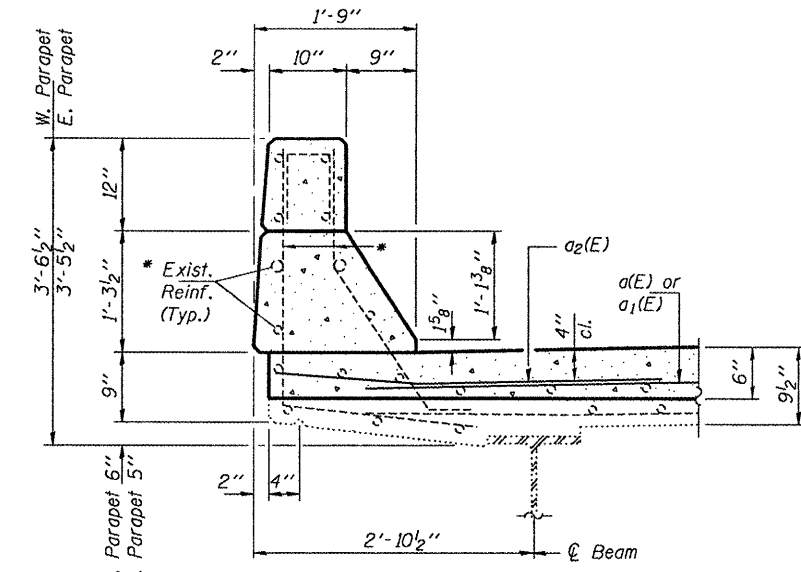
STATE OF ILLINOIS  
DEPARTMENT OF TRANSPORTATION



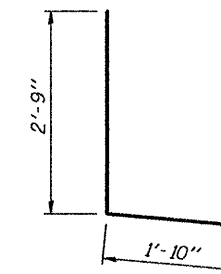
PARTIAL PLAN SHOWING CONCRETE REMOVAL



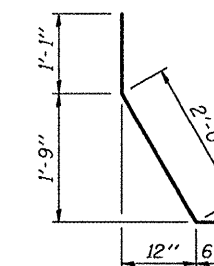
PARTIAL PLAN SHOWING CONCRETE REPLACEMENT



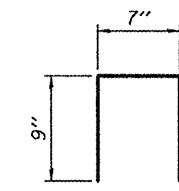
SECTION THRU CURB



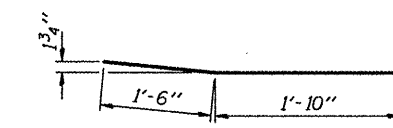
BAR d(E)



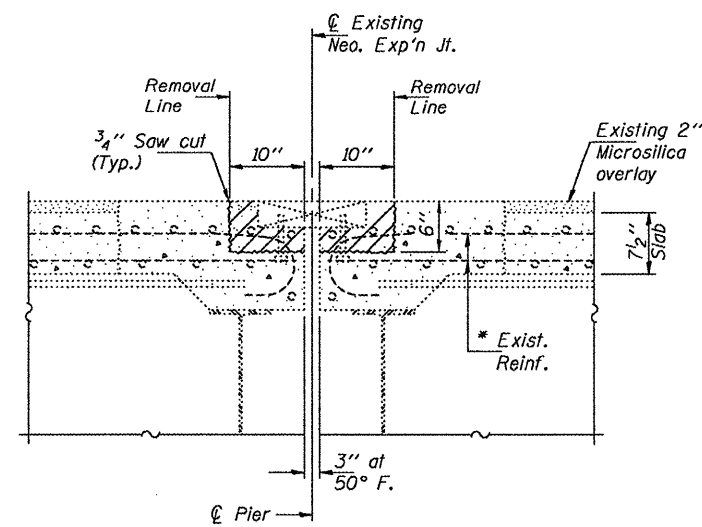
BAR d1(E)



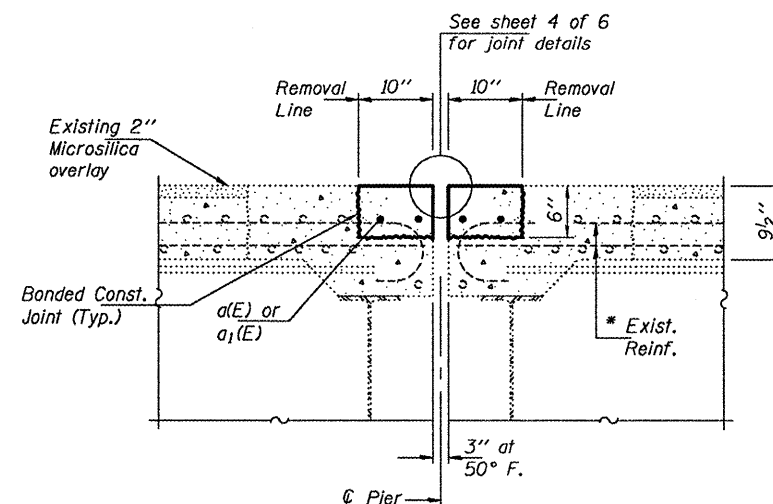
BAR d2(E)



BAR a2(E)



SECTION A-A



SECTION B-B

BILL OF MATERIAL

Bar	No.	Size	Length	Shape
a(E)	4	#6	21'-6"	—
a1(E)	4	#6	17'-6"	—
a2(E)	4	#6	4'-0"	—
Concrete Removal			Cu. Yd.	1.6
Concrete Superstructure			Cu. Yd.	1.6
Reinforcement Bars, Epoxy Coated			Pounds	260

JOINT REPLACEMENT  
DETAILS FOR PIER 4  
SN 016-2468

\* Existing reinforcement extending into the removal area shall be cleaned, straightened and incorporated into the new construction. Any reinforcement bars that are damaged during concrete removal shall be replaced with an approved bar splicer or anchorage system. Cost shall be included with Concrete Removal.

DESIGNED	ATH
CHECKED	GGE
DRAWN	Kyle M. Steffen
CHECKED	ATH GGE

APRIL 30, 2010  
EXAMINED *Carl Power*  
ENGINEER OF STRUCTURAL SERVICES  
PASSED *Ralph E. Anderson*  
ENGINEER OF BRIDGES AND STRUCTURES

SHEET NO. 2 6 SHEETS	F.A.P. RTE.	SECTION	COUNTY	TOTAL SHEETS	SHEET NO.
	330	2009-1331	COOK	28	16
FED. ROAD DIST. NO.			ILLINOIS FED. AID PROJECT		
CONTRACT NO. 60H89					