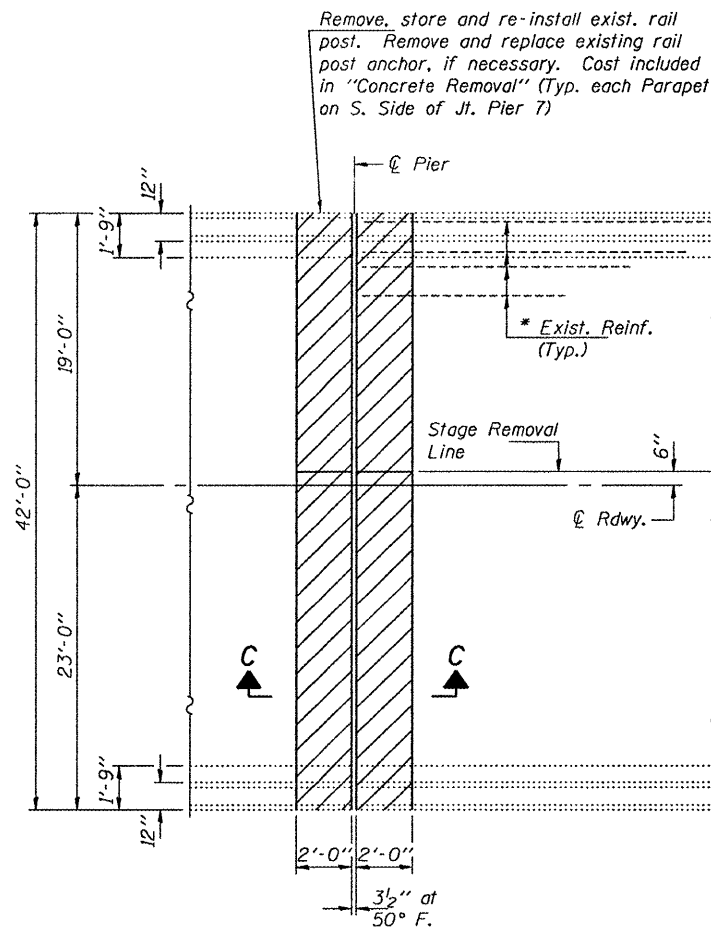
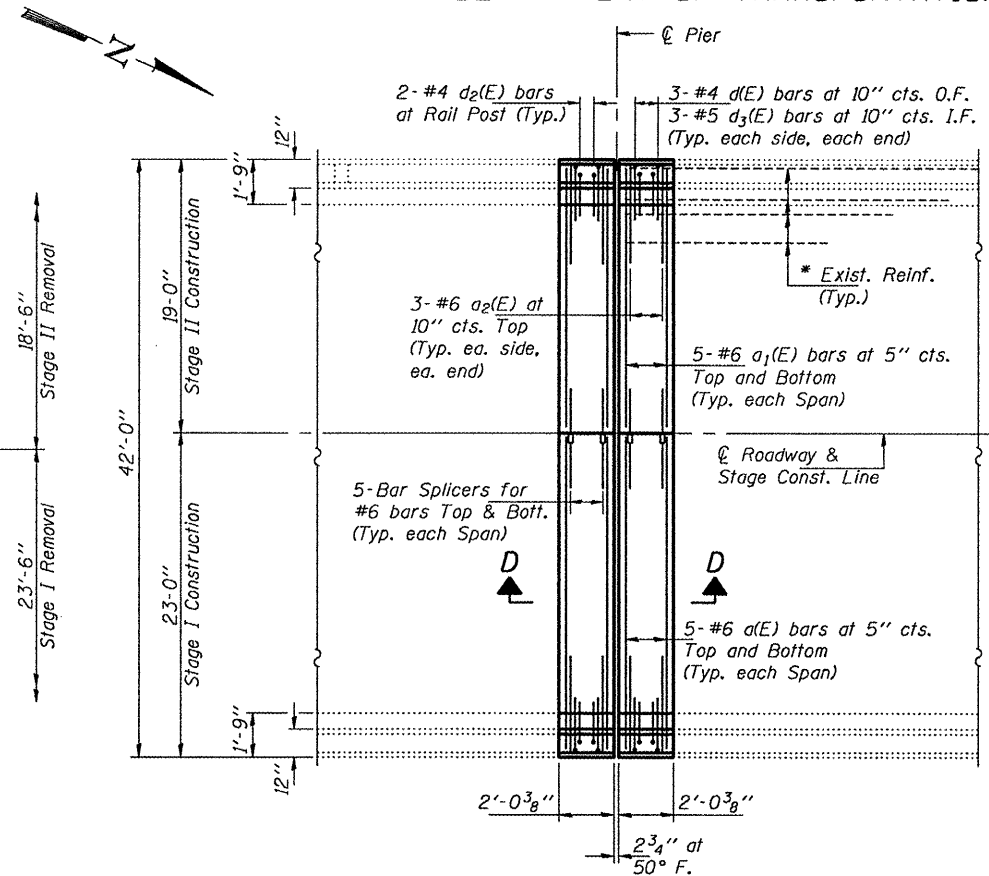


STATE OF ILLINOIS
DEPARTMENT OF TRANSPORTATION

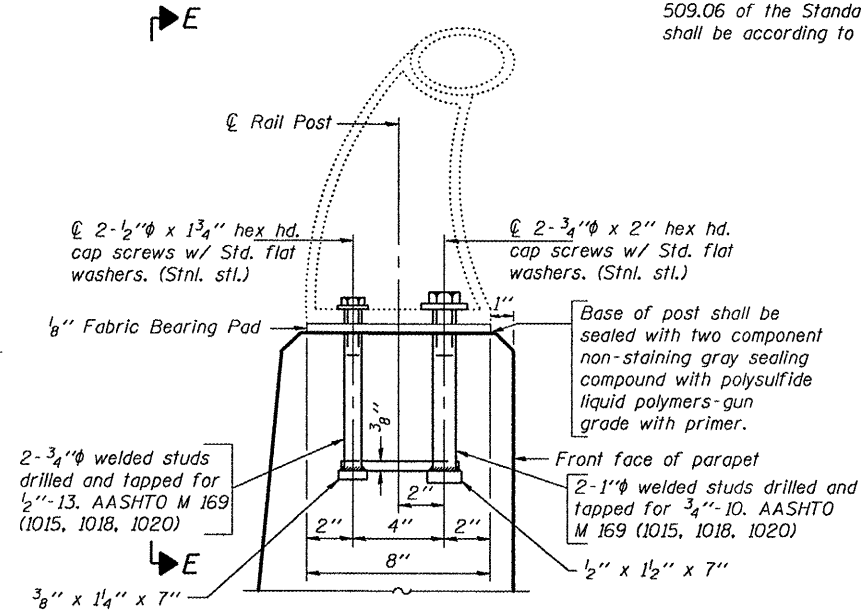
Notes:
See sheet 2 of 6 for Bar Bending details
In lieu of the cast-in-place anchor device shown, the Contractor has the option of drilling and setting stainless steel anchor rods of the same diameter and grade as the specified cap screws according to Article 509.06 of the Standard Specifications. Embedment shall be according to the manufacturer's specifications.



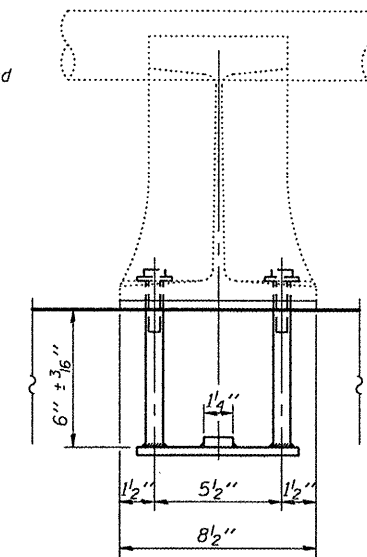
PARTIAL PLAN SHOWING CONCRETE REMOVAL



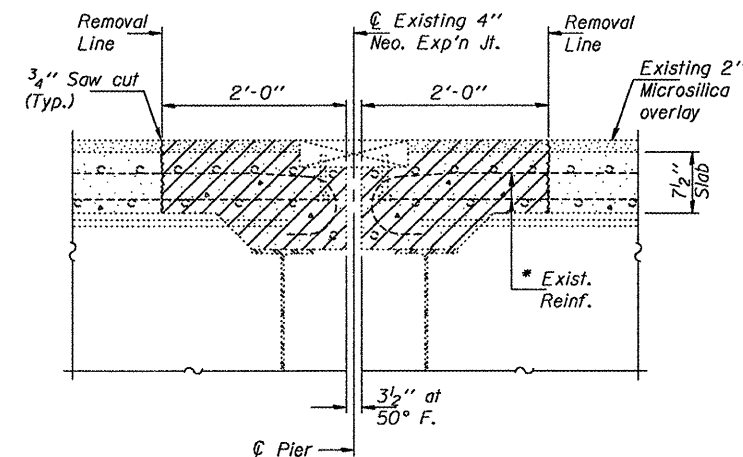
PARTIAL PLAN SHOWING CONCRETE REPLACEMENT



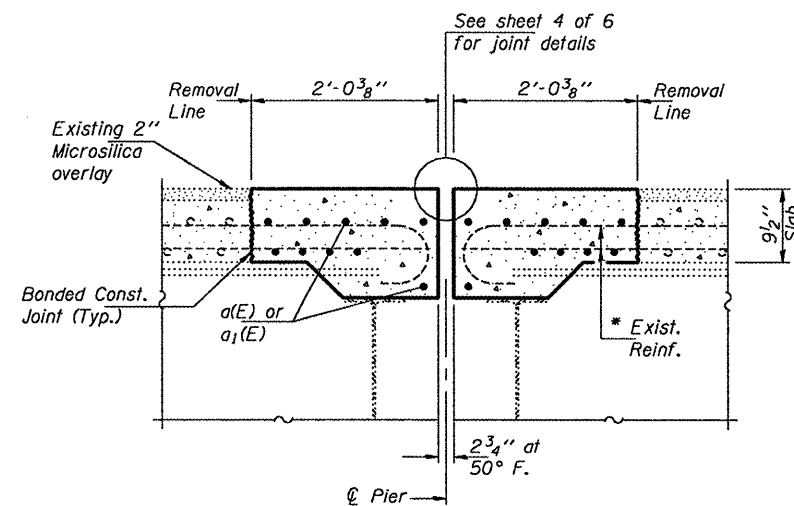
RAIL POST ANCHOR DETAIL



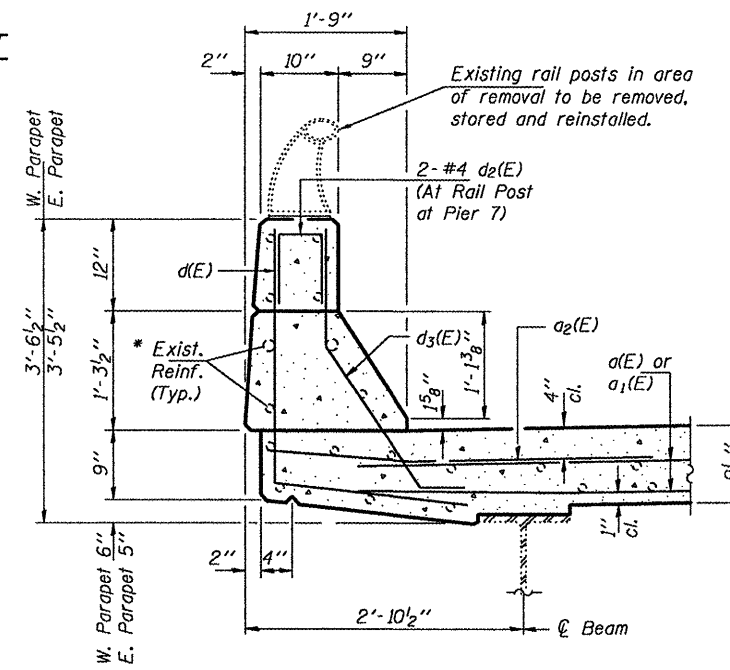
VIEW E-E



SECTION C-C



SECTION D-D



SECTION THRU CURB

BILL OF MATERIAL

Bar	No.	Size	Length	Shape
a(E)	40	#6	21'-6"	—
a1(E)	40	#6	17'-6"	—
a2(E)	24	#6	4'-0"	—
d(E)	24	#4	4'-7"	L
d1(E)	24	#5	3'-7"	L
d2(E)	4	#4	2'-1"	Π
Concrete Removal			Cu. Yd.	13.5
Concrete Superstructure			Cu. Yd.	13.5
Reinforcement Bars, Epoxy Coated			Pounds	2650

JOINT REPLACEMENT
DETAILS FOR PIERS 7 & 10
SN 016-2468

DESIGNED	ATH
CHECKED	GGE
DRAWN	Kyle M. Steffen
CHECKED	ATH GGE

APRIL 30, 2010
EXAMINED *Carl Proyer*
ENGINEER OF STRUCTURAL SERVICES
PASSED *Ralph E. Anderson*
ENGINEER OF BRIDGES AND STRUCTURES

* Existing reinforcement extending into the removal area shall be cleaned, straightened and incorporated into the new construction. Any reinforcement bars that are damaged during concrete removal shall be replaced with an approved bar splicer or anchorage system. Cost shall be included with Concrete Removal.

SHEET NO. 3 6 SHEETS	F.A.P. RTE.	SECTION	COUNTY	TOTAL SHEETS	SHEET NO.
	330	2009-133I	COOK	28	17
CONTRACT NO. 60H89					
FED. ROAD DIST. NO. ILLINOIS FED. AID PROJECT					