

F SHEETS

EX 0 SHEETS, SEE SHEET NO. 2

PROJECT LOCATED IN VILLAGE OF POSEN AND THE CITY OF MAHOMET

AFFIC DATA:

DATE 57:	T (2030)	DESIGN SPEED	POST-MILE SPEED
NORTHBOUND	7,130	60 MPH	55 MPH
SOUTHBOUND	4,880	60 MPH	55 MPH

DESCRIPTION

THE PROPOSED IMPROVEMENT INCLUDES REMOVAL OF S.N. 016-1096 & S.N. 016-1097 AND REPLACEMENT WITH A NEW BRIDGE (S.N. 016-1251) AT I-57 OVER I-294. NEW CONSTRUCTION OF AN I-57 OVER FUTURE RAMP B BRIDGE (S.N. 016-1252), PAVEMENT WIDENING, MEDIAN RECONSTRUCTION, AND PARTIAL RESURFACING ALONG I-57.

DESIGN DESIGNATION

21 (30) Interstate

STATE OF ILLINOIS DEPARTMENT OF TRANSPORTATION DIVISION OF HIGHWAYS

PROPOSED HIGHWAY PLANS

F.A.I. ROUTE 57 (INTERSTATE 57) OVER I-294 (TRI-STATE TOLLWAY) SECTION 1414.2B

BRIDGE CONSTRUCTION AND RECONSTRUCTION AND ROADWAY PAVEMENT WIDENING AND MEDIAN RECONSTRUCTION COOK COUNTY

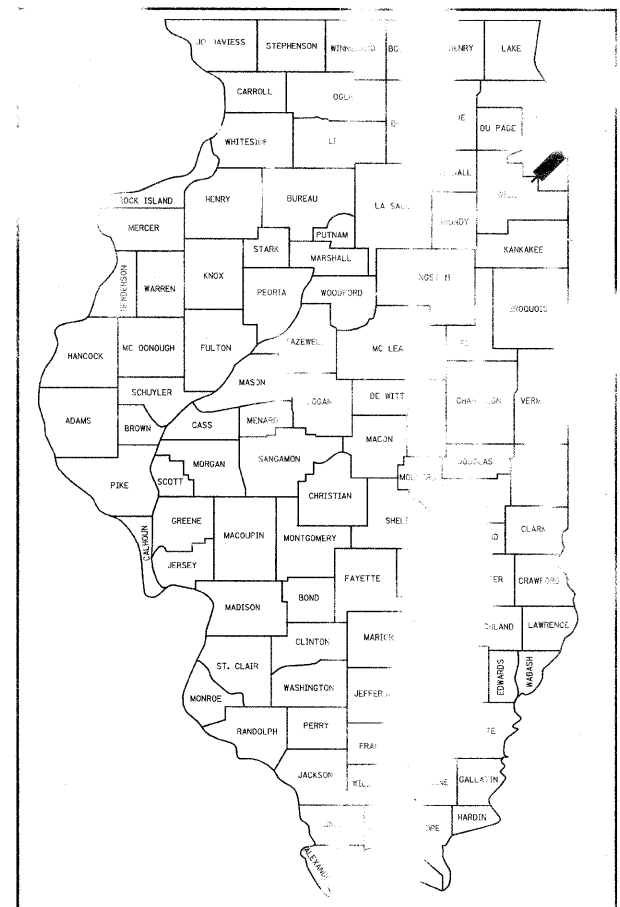
C-91-217-10

F.A.I. RTE.	SECTION	COUNTY	TOTAL SHEETS	SHEET NO.
57	1414.2B	COOK	516	1
FED. ROAD DIST. NO.			TRACT NO. 602	

0-91-217-10

* 516 + 21 = 537

* +14 = 551



LOCATION OF SECTION INDICATED THUS

STATE OF ILLINOIS
DEPARTMENT OF TRANSPORTATION
DIVISION OF HIGHWAYS

SUBMITTED MARCH 15, 2010

Diana M. O'Keefe
DEPUTY DIRECTOR OF HIGHWAYS, REGION ENGINEER

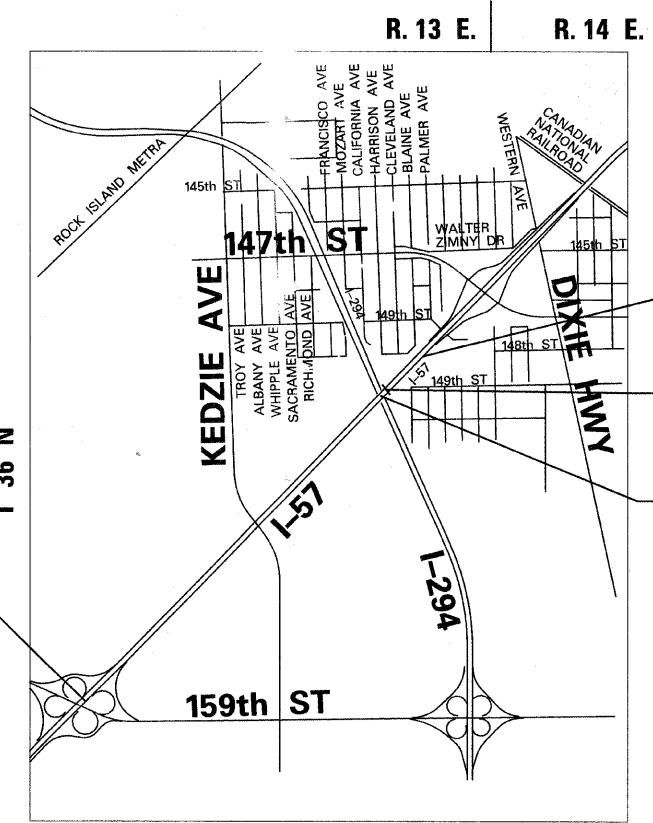
May 7 2010
Scott E. Stitt, P.E.
ENGINEER OF DESIGN AND ENVIRONMENT

May 7 2010
Christine M. Reed
DIRECTOR OF HIGHWAYS, CHIEF ENGINEER

Theodore E. Hamilton
SIGNED
Theodore E. Hamilton, P.E. Ill. Lic. No. 082-049.
Expires 11-30-2010.

Date 3/15/10

For drawings 128 thru 161
180 thru 190



F.A.I. 57 PROJECT LIMIT STA. 1173 + 27.66 (I-57 CENTERLINE)

F.A.I. 57 PROJECT LIMIT STA. 1270 + 85.24 (I-57 CENTERLINE)

S.N. 016-1252

S.N. 016-1251

JOEL P. MARSHALL
62-054958
LICENSED PROFESSIONAL ENGINEER
STATE OF ILLINOIS

Signed Joel P. Marshall
Date 3/12/2010

Ill. Lic. No. 02-004958
Expires 11-30-2010.

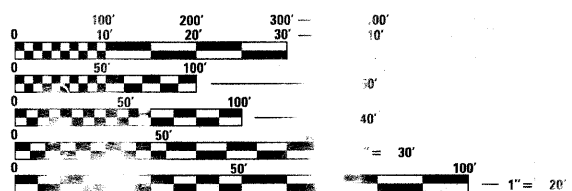
EXCLUDES
128 thru 171
174 thru 190
246 thru 275

STATE OF ILLINOIS
SPIROS PANTAZIS
081-006448
LICENSED PROFESSIONAL ENGINEER
CHICAGO, ILLINOIS

Signed Spiros Pantazis
Date 3/12/2010

Ill. Lic. No. 081-006448
Expires 11-30-2010.

For drawings 128 thru 161
180 thru 190



FULL SIZE ENGINEERING PLANS CONFORM TO THE ABOVE SCALES. REDUCED SCALES WILL NOT BE USED. USING STANDARD PLANS WILL NOT BE USED. MAKING MEASUREMENTS MAY BE USED.

JULIE JOHNSON UTIL INFORMATION FOR EXCAVATION

PROJECT MANAGER: HELMUT PAZON (847) 705-4523

CONTRACT NO. 60J27

TOWNSHIP OF BREMEN

LOCATION MAP

GROSS LENGTH OF PROJECT = 9757.64 FT. = 1.85 MI.
NET LENGTH OF PROJECT = 9757.64 FT. = 1.85 MI.

TYLIN INTERNATIONAL
200 SOUTH WACKER DRIVE, SUITE 1400
CHICAGO, ILLINOIS 60606
TEL: 312-777-2900 FAX: 312-777-2305

Rev. 5-27-10 PRINTED BY THE AUTHORITY OF THE STATE OF ILLINOIS