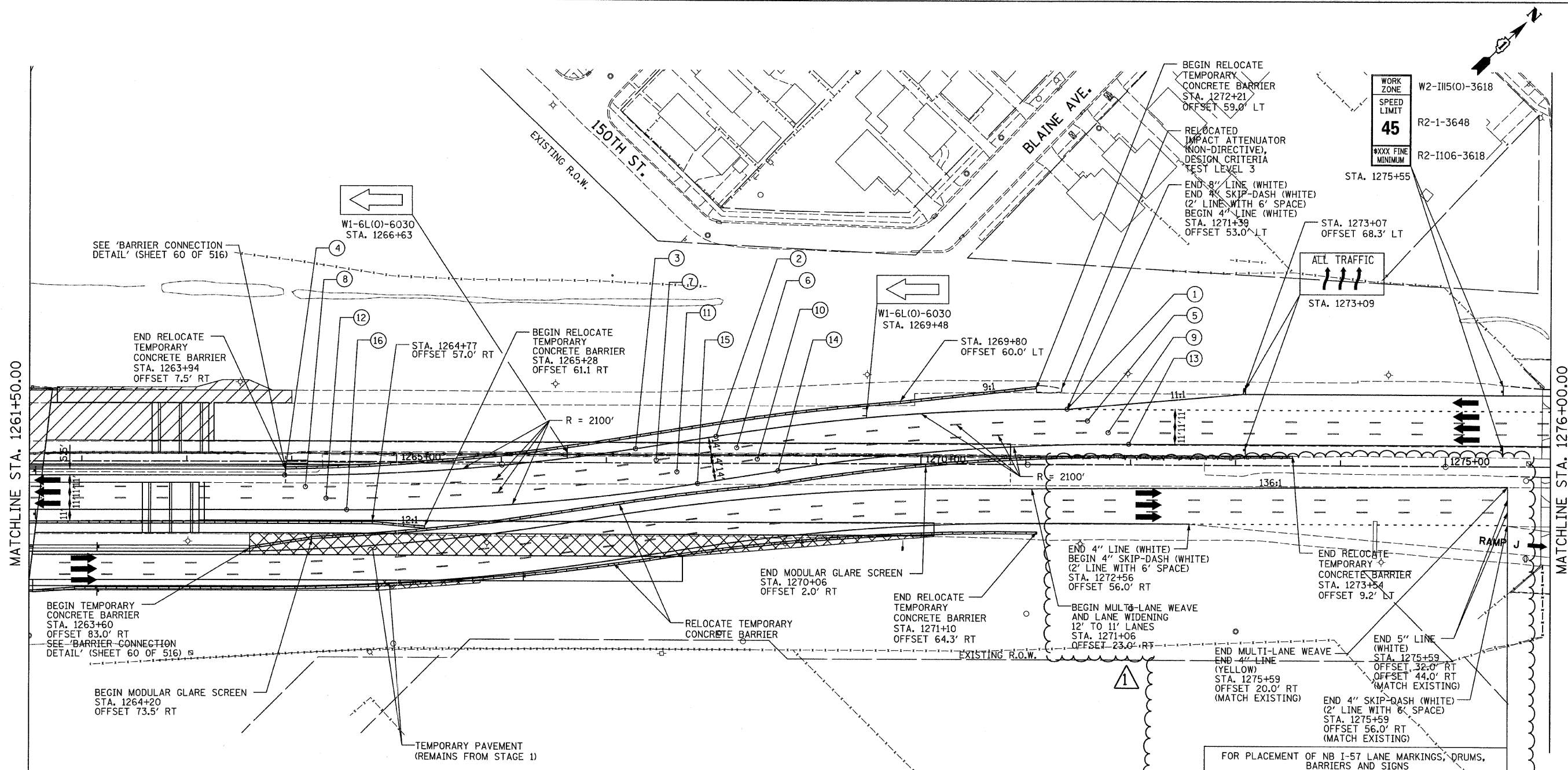


MATCHLINE STA. 1261+50.00

MATCHLINE STA. 1276+00.00



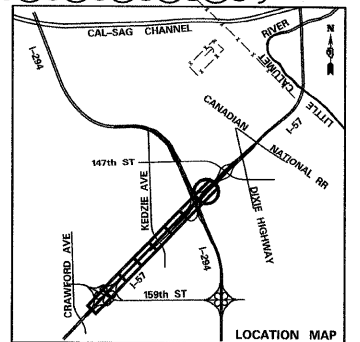
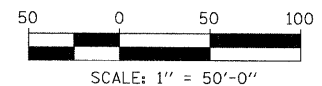
LOCATION	NOTES	LOCATION	NOTES
① STA. 1271+39 OFFSET 53.0' LT	BEGIN REVERSE CURVE	⑨ STA. 1271+79 OFFSET 31.0' LT	BEGIN REVERSE CURVE
② STA. 1268+05 OFFSET 26.2' LT	END CURVE BEGIN TANGENT	⑩ STA. 1268+44 OFFSET 4.2' LT	END CURVE BEGIN TANGENT
③ STA. 1267+28 OFFSET 13.8' LT	END TANGENT BEGIN CURVE	⑪ STA. 1267+67 OFFSET 8.2' RT	END TANGENT BEGIN CURVE
④ STA. 1263+93 OFFSET 13.0' RT	END REVERSE CURVE	⑫ STA. 1264+33 OFFSET 35.0' RT	END REVERSE CURVE
⑤ STA. 1271+59 OFFSET 42.0' LT	BEGIN REVERSE CURVE	⑬ STA. 1271+98 OFFSET 20.0' LT	BEGIN REVERSE CURVE
⑥ STA. 1268+24 OFFSET 15.2' LT	END CURVE BEGIN TANGENT	⑭ STA. 1268+64 OFFSET 6.8' RT	END CURVE BEGIN TANGENT
⑦ STA. 1267+48 OFFSET 2.8' LT	END TANGENT BEGIN CURVE	⑮ STA. 1267+87 OFFSET 19.2' RT	END TANGENT BEGIN CURVE
⑧ STA. 1264+13 OFFSET 24.0' RT	END REVERSE CURVE	⑯ STA. 1264+53 OFFSET 46.0' RT	END REVERSE CURVE

NOTES:

- FOR PLACEMENT OF NB I-57 LANE MARKINGS, DRUMS AND SIGNS FROM STA. 1239+42 TO STA. 1272+30, SEE MAINTENANCE OF TRAFFIC - STAGE 2 SHEETS.
- TEMPORARY RAISED REFLECTIVE PAVEMENT MARKERS SHALL BE PLACED BETWEEN LANES ALONG NB I-57 BETWEEN STA. 1246+81 AND STA. 1272+30. THEY SHALL BE PLACED BETWEEN LANES ALONG SB I-57 BETWEEN STA. 1247+45 AND STA. 1271+98.

LEGEND:

- TEMPORARY CONCRETE BARRIER
- TRAFFIC LANE
- WORK ZONE
- TEMPORARY PAVEMENT (INTERSTATE)
- BARRICADE, TYPE III
- DRUM WITH MONO-DIRECTIONAL STEADY BURNING LIGHT
- ARROW BOARD



TYLIN INTERNATIONAL	USER NAME =	DESIGNED - DM	REVISED Δ - ADDENDUM 1 05/24/10
	PLOT SCALE =	DRAWN - DM	REVISED -
	PLOT DATE =	CHECKED - JPM	REVISED -
		DATE - 3/18/2010	REVISED -

**STATE OF ILLINOIS
DEPARTMENT OF TRANSPORTATION**

**I-57 AT I-294 INTERCHANGE PROJECT
MAINTENANCE OF TRAFFIC - I-57 STAGE 3**

SCALE: 1"=50' SHEET NO. 3 OF 4 SHEETS STA. 1261+50 TO STA. 1276+00

F.A.I. RTE.	SECTION	COUNTY	TOTAL SHEETS	SHEET NO.
57	1414.2B	COOK	516	117
FED. ROAD DIST. NO.			CONTRACT NO. 60J27	
ILLINOIS			FED. AID PROJECT	

D:\602540(57-294)\road\mot\mot.pro\project\I-57_MOT_ST3_SHT08.dgn 5/22/2010 3:27:01 PM